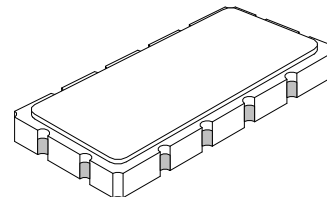


# SF1124A 190 MHz SAW Filter



- Designed for WCDMA 3G IF Applications
- Excellent Size-to-Performance Ratio
- Very Flexible Impedance Matching
- Balanced or Unbalanced Input and Output
- Hermetic 13.3 x 6.5 mm Surface-Mount Case



See Associated Plots

Characteristic	Sym	Min	Typ	Max	Units	Notes
Nominal Center Frequency	fc	190.000			MHz	1
Passband	Insertion Loss at fc	IL	12	14.0	dB	1, 2
	1 dB Passband	BW <sub>1</sub>	4.6	5.1		
	3 dB Passband	BW <sub>3</sub>	5.1	5.7		
	Amplitude Ripple over fc ±2.4 MHz		.70	1.0	dB <sub>P-P</sub>	
	Phase Variation over fc ±2.4 MHz		4	10	° <sub>P-P</sub>	
Group Delay Variation over fc ±2.4 MHz	GDV		75	120	nS <sub>P-P</sub>	
Rejection	fc-4.1 to fc-3.65 and fc+3.4 to fc+3.8 MHz		10		dB	1, 2, 3
	fc-5.0 to fc-4.1 and fc+3.8 to fc+5.0 MHz		30			
	fc-10.0 to fc-5.0 and fc+5.0 to fc+10.0 MHz		40			
	fc-20.0 to fc-10.0 and fc+10.0 to fc+20.0 MHz		40			
	At 157.6 MHz		40			
	At 165.7 MHz		40			
	fc-60 MHz to fc-20 MHz fc+20 MHz to fc+60 MHz		40			
Part to Part Average Group Delay Variation				±5	nsec	4
Operating Temperature Range	T <sub>A</sub>	-10	+25	+85	°C	1
Frequency Temperature Coefficient	FTC		-18		ppm/°C	

Matching to Unbalanced or Balanced Impedance	External L-C
Case Style	SMP-53 13.3 x 6.5 mm Nominal Footprint
Lid Symbolization (YY = year, WW = week) See note 4	RFM SF1124A YYWW

## Absolute Maximum Ratings

Rating	Value	Units
Maximum Incident Power in Passband	+10	dBm
Max. DC voltage between any 2 terminals	30	VDC
Storage Temperature Range	-40 to +85	°C
Max Soldering Profile	265°C for 10 s	

## Electrical Connections

Connection	Terminals
Port 1 Hot	11
Port 1 Gnd Return	12
Port 2 Hot	5
Port 2 Gnd Return	6
Case Ground	All others

### Notes:

- All specifications apply filter soldered to the RFM specified demonstration board with impedance matching to 50 Ω and measured with 50 Ω network analyzer.
- Unless noted otherwise, all frequency specifications are referenced to the nominal center frequency, fc.
- Rejection is measured as attenuation below the minimum IL point in the passband. Rejection in final user application is dependent on PCB layout and external impedance matching design. See Application Note No. 42 for details.
- Part to part absolute delay measurement records the absolute delay mean across 1dB passband.
- "LRIP" or "L" after the part number indicates "low rate initial production" and "ENG" or "E" indicates "engineering prototypes."
- The design, manufacturing process, and specifications of this filter are subject to change.
- Either Port 1 or Port 2 may be used for either input or output in the design. However, impedances and impedance matching may vary between Port 1 and Port 2, so that the filter must always be installed in one direction per the circuit design.
- US and international patents may apply.
- RFM, stylized RFM logo, and RF Monolithics, Inc. are registered trademarks of RF Monolithics, Inc.
- ©Copyright 1999, RF Monolithics Inc.
- Electrostatic Sensitive Device. Observe precautions for handling.

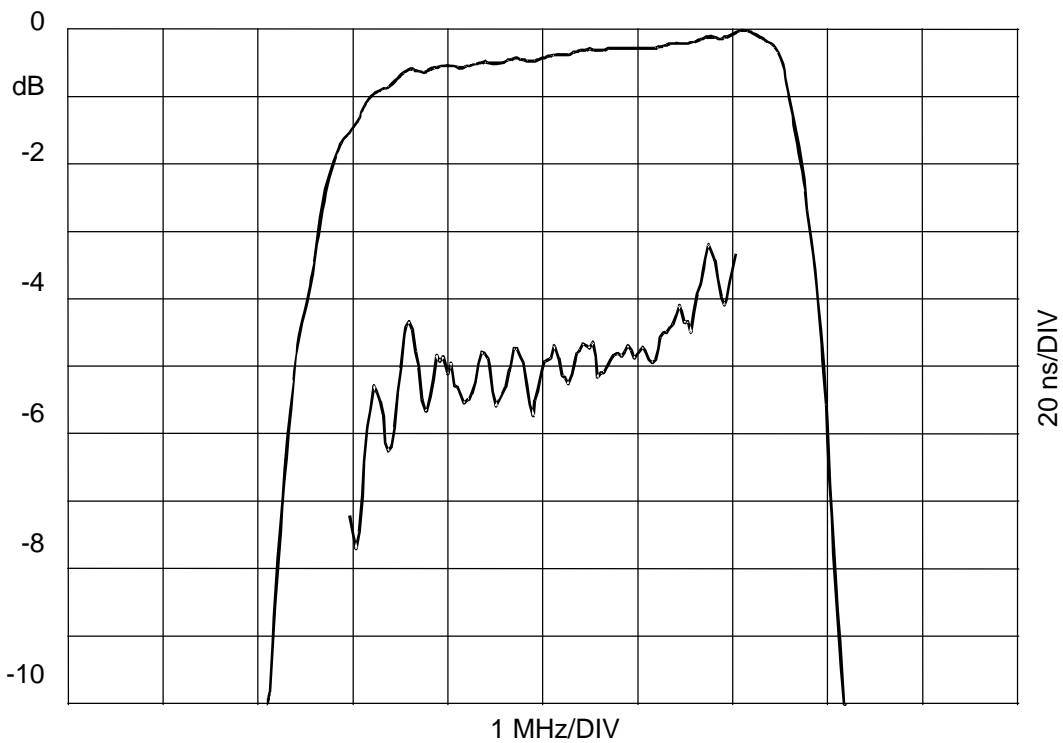
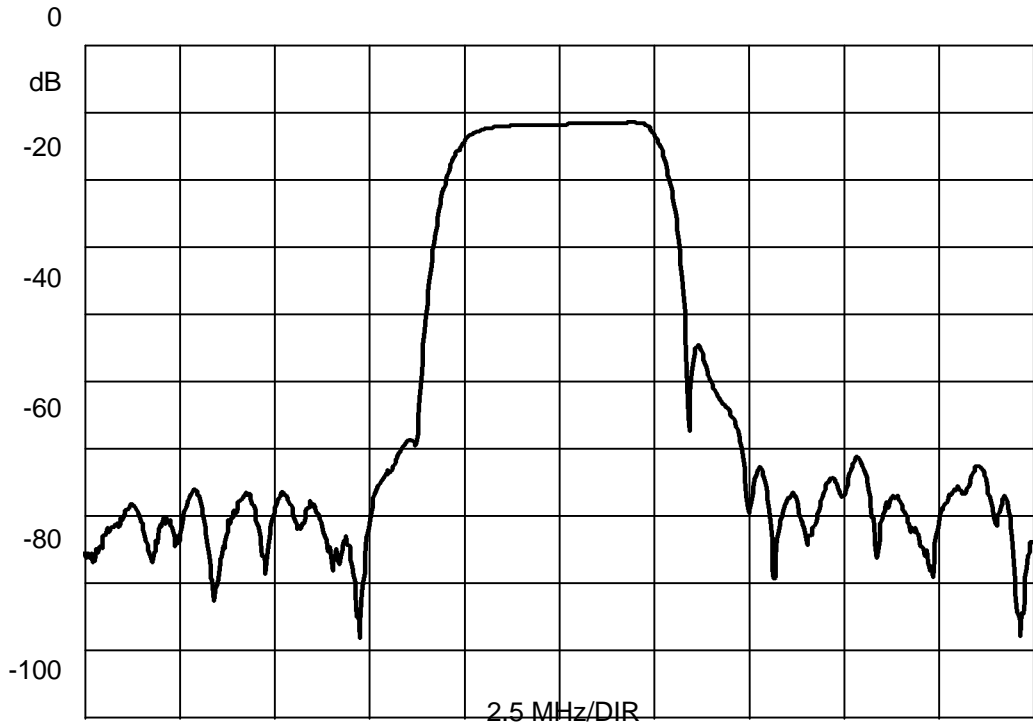


**RF Monolithics, Inc.**  
4347 Sigma Road  
Dallas, Texas 75244  
USA

Phone: +1(972)233-2903  
Fax: +1(972)387-8148  
e-mail: [info@rfm.com](mailto:info@rfm.com)  
Home page: [www.rfm.com](http://www.rfm.com)

**European Sales Office**  
44 1963 251383  
44 1963 251510

# SF1124A 190 MHz SAW Filter

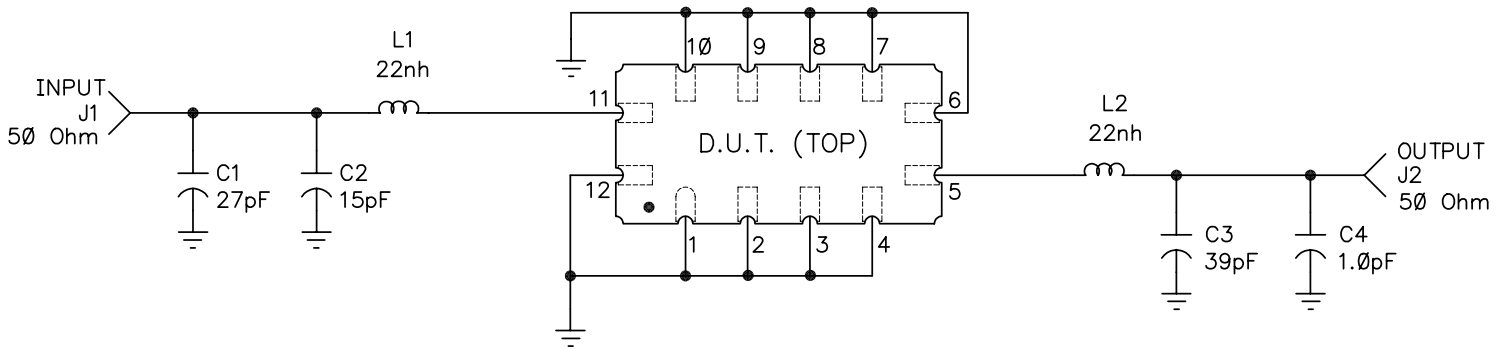


**RF Monolithics, Inc.**  
4347 Sigma Road  
Dallas, Texas 75244  
USA

Phone: +1(972)233-2903  
Fax: +1(972)387-8148  
e-mail: [info@rfm.com](mailto:info@rfm.com)  
Home page: [www.rfm.com](http://www.rfm.com)

**European Sales Office**  
44 1963 251383  
44 1963 251510

REV	ECN NO.	DESCRIPTION	APP/DATE
A	9188	INITIAL RELEASE	29nov00



DRAWN BY/DATE: J.F.Christopherson 29nov00

TITLE: SF1124A DEMO PCB

**RF Monolithics, Inc.**  
DALLAS, TEXAS 75244

CHECKED/APPROVED

SIZE  
**A**

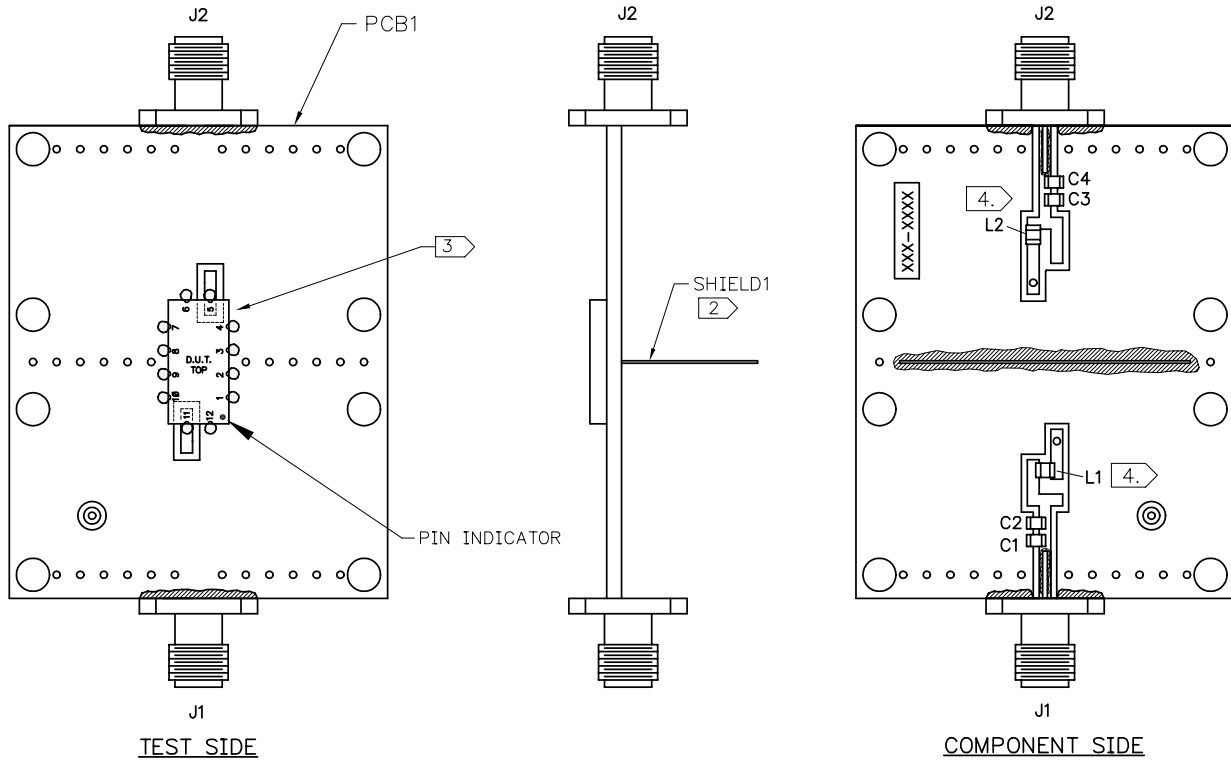
CODE IDENT  
**2U874**

DWG. NO. SF1124A-000

REV SHEET  
**A 1/3**

NOTES:

1. SOLDER MOUNT COMPONENTS & CONNECTORS TO PCB1.
2. SOLDER SHIELD1 AS SHOWN AND TRIM TAB FROM SHIELD SO THAT IT IS FLUSH WITH PCB.
3. ORIENT THE FLTR1 AND SOLDER IT DOWN TO THE BOARD AS SHOWN.
4. L1 AND L2 INDUCTORS ARE 90° TO EACH OTHER.



**RF Monolithics, Inc.**  
DALLAS, TEXAS 75244

SIZE  
**A**

CODE IDENT  
**2U874**

DWG. NO. **SF1124A-000**

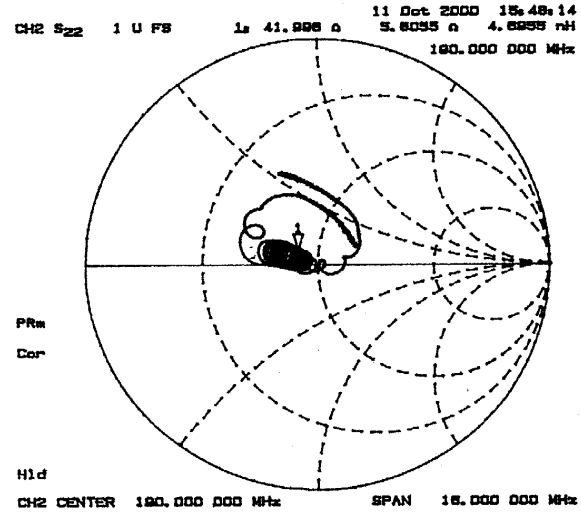
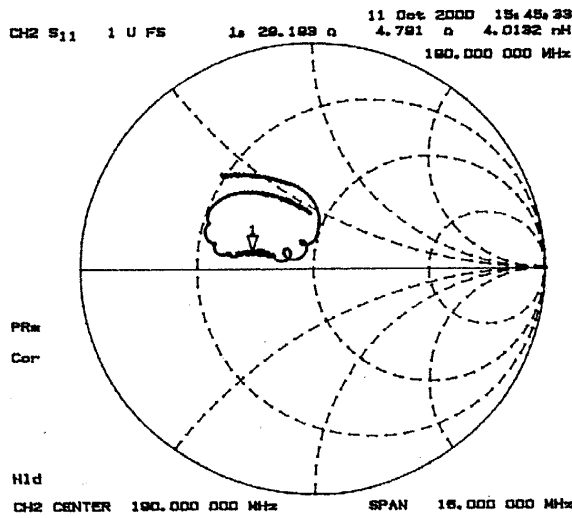
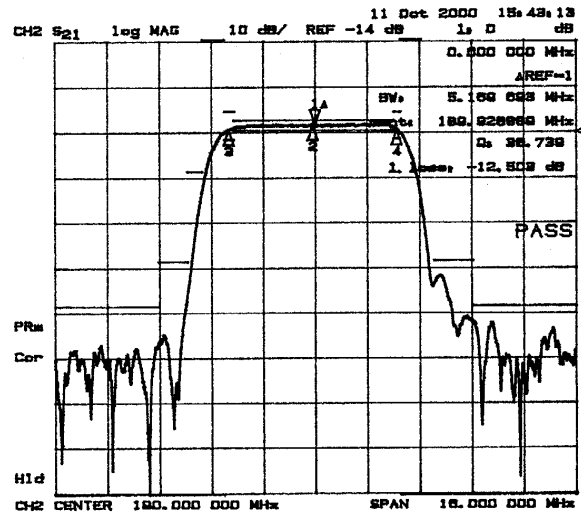
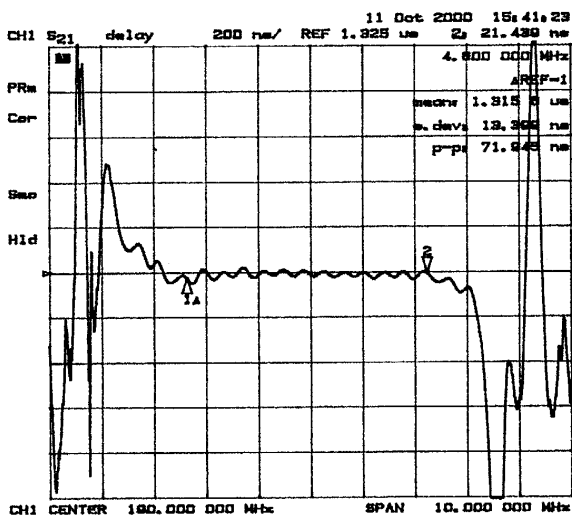
REV  
**A**

SHEET  
**2**

SF1124A  
 DEMO#4  
 10-11-00  
 RT

C1 = 20pf  
 C2 = 15pf  
 C3 = 39pf  
 C4 = 1pf

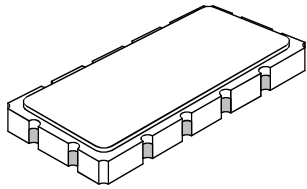
L1, L2 = 22nH



# SAW Filters Packages

## SMP-53 Case

### 12-Terminal Ceramic Surface-Mount Case 13.3 x 6.5 mm Nominal Footprint



#### Case Dimensions

Dimension	mm			Inches		
	Min	Nom	Max	Min	Nom	Max
A	13.08	13.31	13.60	0.515	0.524	0.535
B	6.27	6.50	6.80	0.247	0.256	0.268
C		1.91	2.00		0.075	0.079
D		1.50			0.059	
E		0.79			0.031	
H		1.0			0.039	
P		2.54			0.100	

#### Electrical Connections

Connection		Terminals
Port 1	Input or Return	11
	Return or Input	12
Port 2	Output or Return	5
	Return or Output	6
Ground		All others
<b>Single Ended Operation</b>		<b>Return is ground</b>
<b>Differential Operation</b>		<b>Return is hot</b>

