

**Single Junction Surface Mount Isolator**  
800MHz, 900MHz, 1800MHz, 1900MHz, 2100MHz

**FR32 Series**  
**V6**

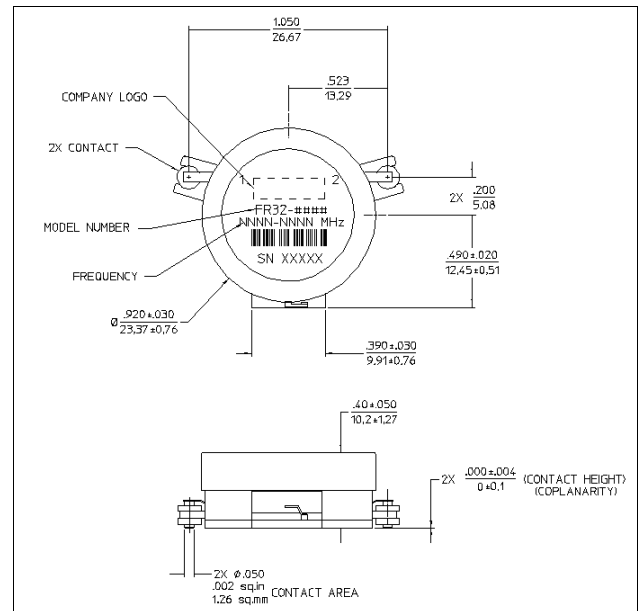
**Features**

- 20dB Isolation
- 0.35dB Insertion Loss
- Low cost surface mount package
- Custom products available with alternative configurations such as couplers, attenuators, high power termination and reverse circulation.

**Description**

M/A COM's drop-in circulators and isolators, designed for Wireless base station and power amplifier applications, feature high reliability performance at a low cost. These designs feature a low cost package ideally suited for high volume manufacturing. M/A Com is one of the largest suppliers of isolator and circulators in the world.

**Outline Drawing**



**Electrical Specifications:  $Z_0 = 50W$**

Parameter	-30°C to +85°C
Isolation	20dB minimum
Insertion Loss	0.35dB maximum
VSWR, all ports	1.22:1
Circulation	Clockwise

**Absolute Maximum Ratings <sup>1</sup>**

Parameter	Absolute Maximum
Forward Power	65 Watts
Reflected Power	10 Watts
Operating Temperature	-30°C to +85°C
Storage Temperature	-45°C to +125°C

1. Operation of this device above any one of these parameters

**Ordering Information**

Part Number	Frequency Range (MHz)
FR32-0001	869—894
FR32-0002	925—960
FR32-0003	1805—1880
FR32-0004	1930—1990
FR32-0009	2110—2170

1

M/A-COM Inc. and its affiliates reserve the right to make changes to the product(s) or information contained herein without notice. M/A-COM makes no warranty, representation or guarantee regarding the suitability of its products for any particular purpose, nor does M/A-COM assume any liability whatsoever arising out of the use or application of any product(s) or information.

• **North America** Tel: 800.366.2266 / Fax: 978.366.2266  
 • **Europe** Tel: 44.1908.574.200 / Fax: 44.1908.574.300  
 • **Asia/Pacific** Tel: 81.44.844.8296 / Fax: 81.44.844.8298

Visit [www.macom.com](http://www.macom.com) for additional data sheets and product information.