

Strobe Light Transformer (CMS8D series)



Features

Compact size, surface mount transformer.

High current.

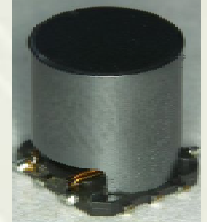
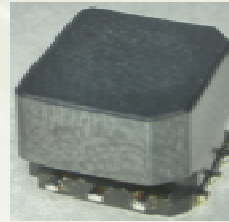
Low leakage Inductance.

Special winding technology for high reliability.

Storage temperature range: -40 ~+85

Operating temperature range: -40 ~+85 (including coil's self-heat).

RoHS Compliance.

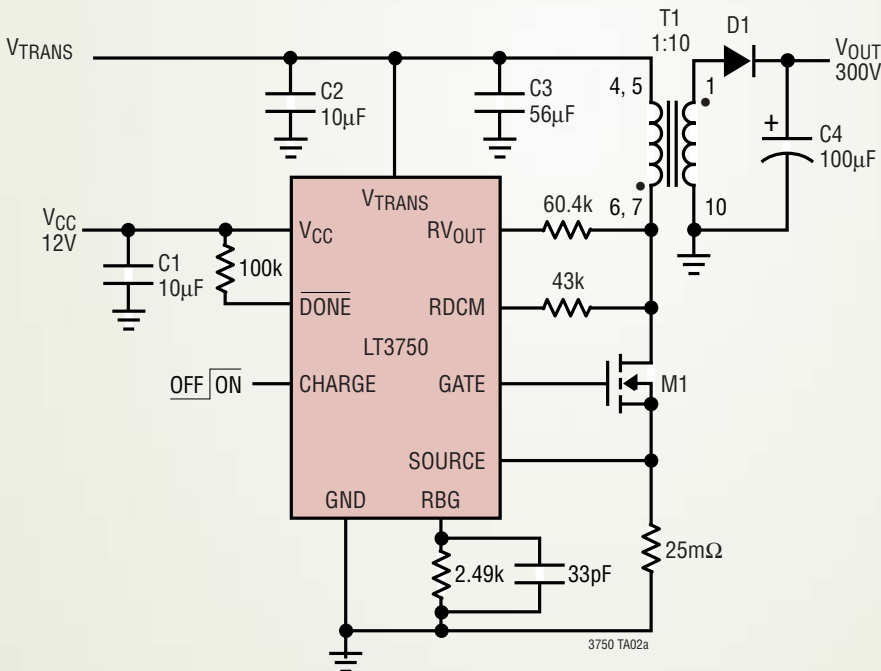


Applications

Step up transformer for strobe light of Digital Single-lens Reflex Camera.

IC control strobe light condenser charge mode compliance.

Typical Evaluation Circuit



D1: DIODES INC. MURS160

M1: PHILIPS PHT6NQ10T

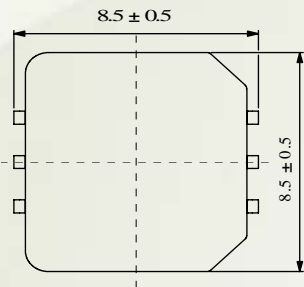
T1: SUMIDA CMS8D75

Strobe Light Transformer (CMS8D series)

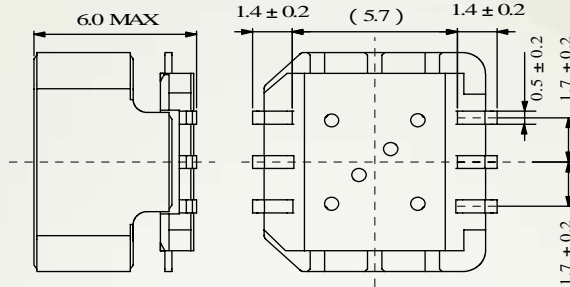


sumida

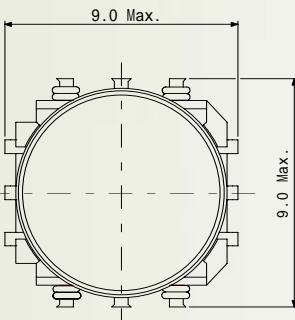
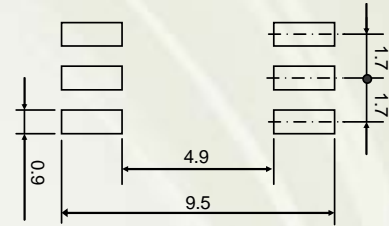
Dimensions



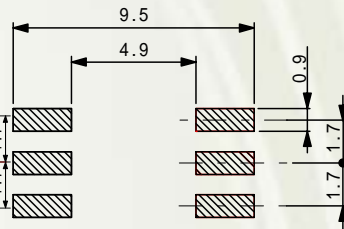
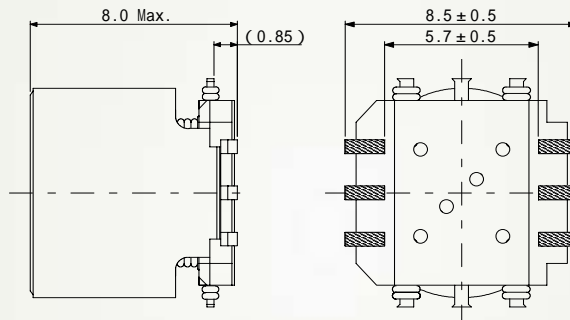
CMS8D57



Land pattern



CMS8D75



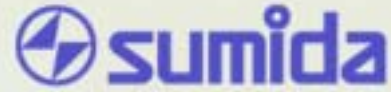
Electric characteristics specification (Typical).

| Type | Inductance (μ H)(6-1) 100kHz/1V | Inductance (μ H)(3-4) 100kHz/1V | D.C.R. (Ω) (6-1) | D.C.R. (m Ω) (3-4) | DC superposition Permission current(3-4)(A) | 1 |
|---------|--|--|---------------------------------|----------------------------------|--|---|
| CMS8D57 | 1100 \pm 20% | 10.0 \pm 20% | 12.6 \pm 20% | 55.0 \pm 20% | 2.5 @charge capacity 400 μ F Max. | |
| CMS8D75 | 10.5 \pm 20% | 990(Ref.) | 58.0 \pm 20% | 18.7(Ref.) | 4.0@charge capacity 600 μ F Max. | |

1 DC superposition permission current : this indicates the value of current at which the Inductance decreases to 80% of its initial value at DC superposition

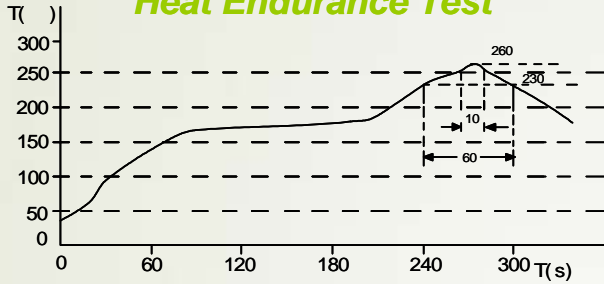
Visit <http://www.sumida.com> for more information

Strobe Light Transformer (CMS8D series)

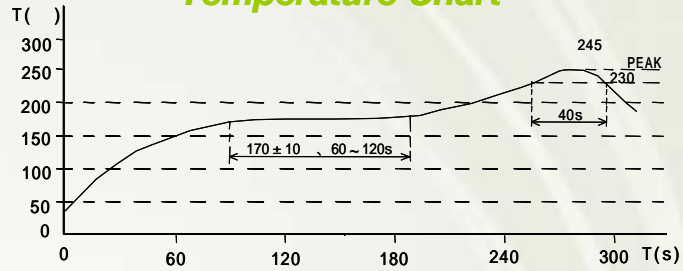


Recommendation reflow condition

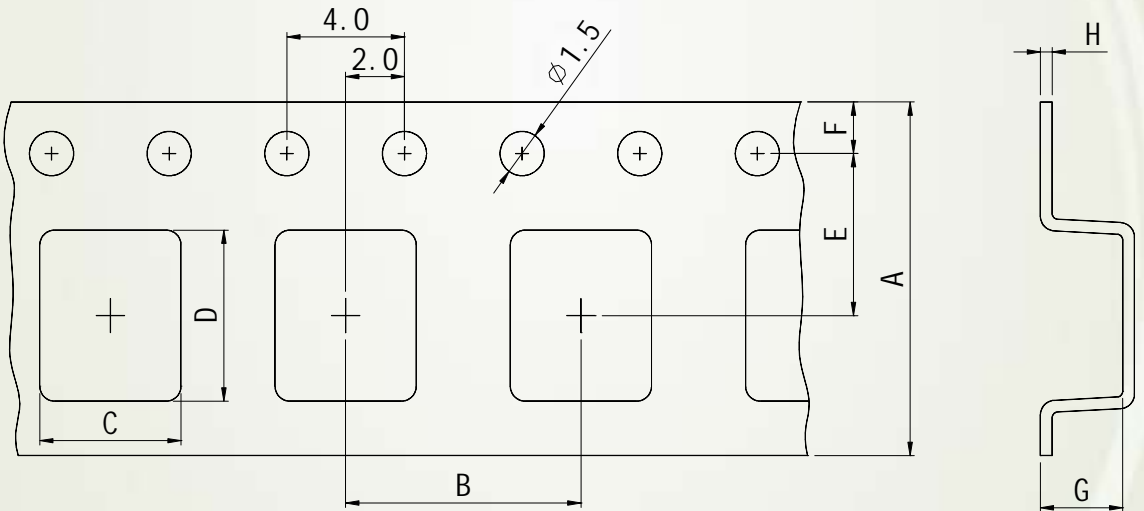
Heat Endurance Test



Temperature Chart



Packaging with embossed tape and Reel



Visit <http://www.sumida.com> for more information.