


Strobe Light Transformer (CMS8D series)



 **sumida**

Features

Compact size, surface mount transformer.

High current.

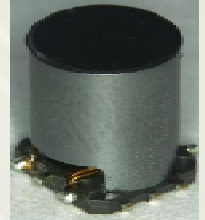
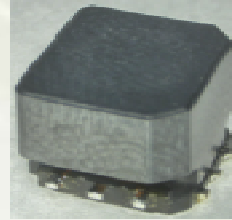
Low leakage Inductance.

Special winding technology for high reliability.

Storage temperature range: -40 ~+85

Operating temperature range: -40 ~+85 (including coil's self-heat).

RoHS Compliance.

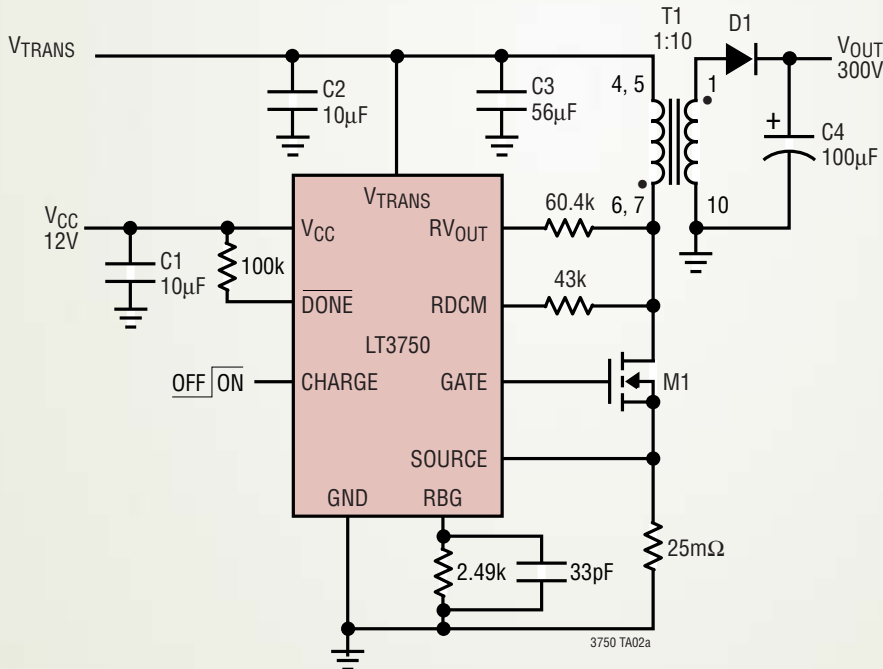


Applications

Step up transformer for strobe light of Digital Single-lens Reflex Camera.

IC control strobe light condenser charge mode compliance.

Typical Evaluation Circuit

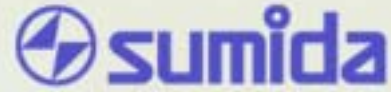


D1: DIODES INC. MURS160

M1: PHILIPS PHT6NQ10T

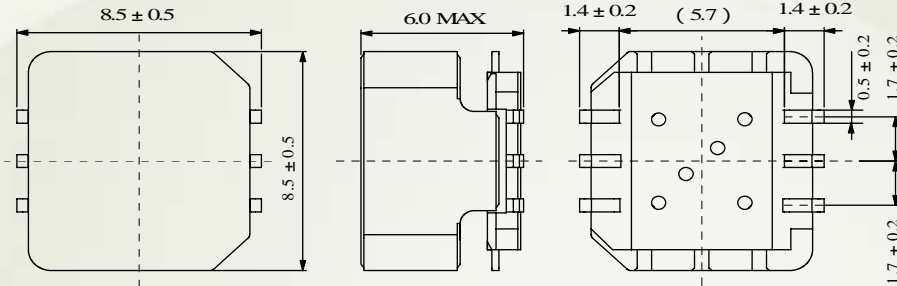
T1: SUMIDA CMS8D75

Strobe Light Transformer (CMS8D series)

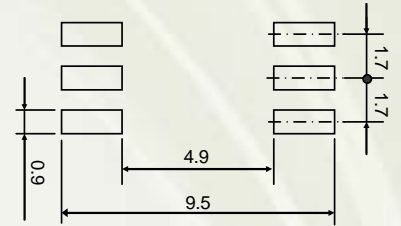


Dimensions

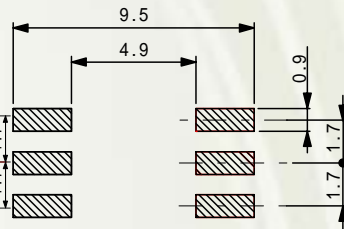
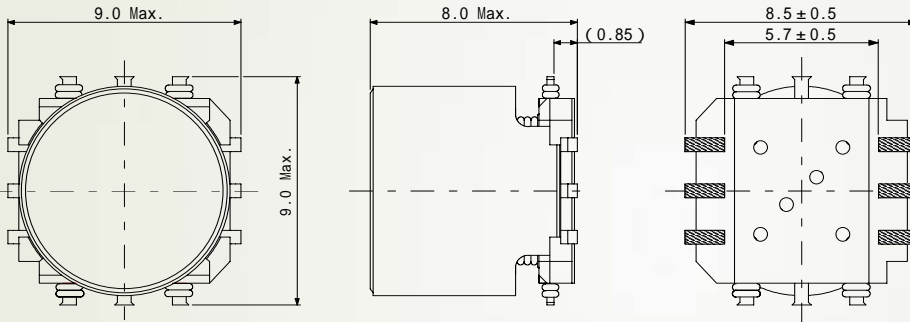
CMS8D57



Land pattern



CMS8D75



Electric characteristics specification (Typical).

Type	Inductance (μH)(6-1) 100kHz/1V	Inductance (μH)(3-4) 100kHz/1V	D.C.R. (Ω) (6-1)	D.C.R. ($\text{m}\Omega$) (3-4)	DC superposition Permission current(3-4)(A)	1
CMS8D57	$1100 \pm 20\%$	$10.0 \pm 20\%$	$12.6 \pm 20\%$	$55.0 \pm 20\%$	2.5 @charge capacity 400 μF Max.	
CMS8D75	$10.5 \pm 20\%$	990(Ref.)	$58.0 \pm 20\%$	18.7(Ref.)	4.0@charge capacity 600 μF Max.	

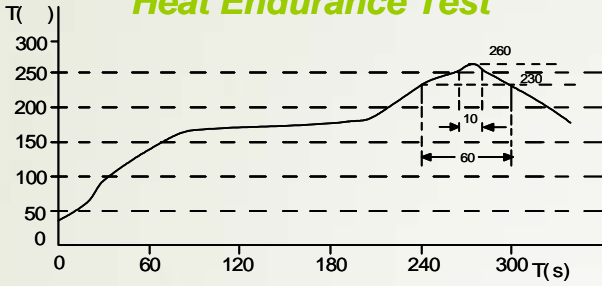
1 DC superposition permission current : this indicates the value of current at which the Inductance decreases to 80% of its initial value at DC superposition

Strobe Light Transformer (CMS8D series)

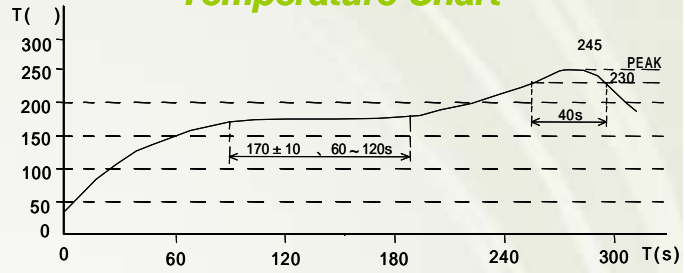


Recommendation reflow condition

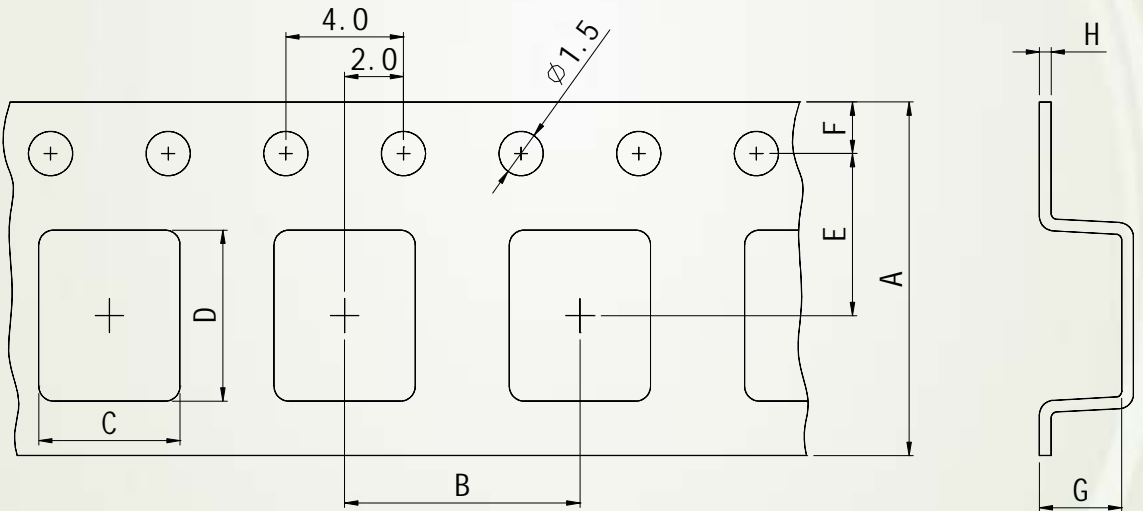
Heat Endurance Test



Temperature Chart



Packaging with embossed tape and Reel



Visit <http://www.sumida.com> for more information.