

*ASSP For Power Supply Applications***Switching Regulator Controller****MB3776A****DESCRIPTION**

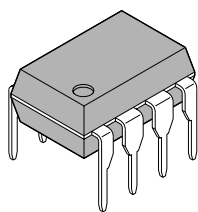
MB3776A is a PWM system switching regulator controller. Because of its low operating supply voltage and power-down, the MB3776A is ideal for use in DC/DC converters for battery-powered portable equipment.

FEATURES

- Wide supply voltage range: (2 V to 15 V)
- Wide oscillation frequency range, high-frequency oscillation: (10 kHz to 500 kHz)
- Push-pull output. Drive current set with external resistor
- Built-in idle period circuit
- Internally set error amplifier gain, few external components
- Built-in power-down function

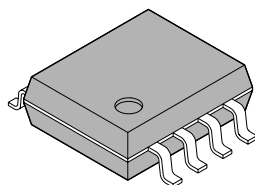
PACKAGES

8-pin Plastic DIP



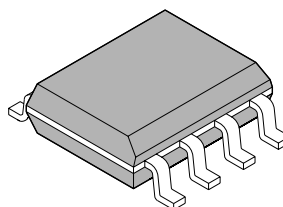
(DIP-8P-M01)

8-pin Plastic SOP



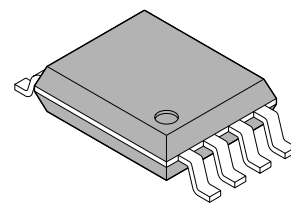
(FPT-8P-M01)

8-pin Plastic SOL



(FPT-8P-M02)

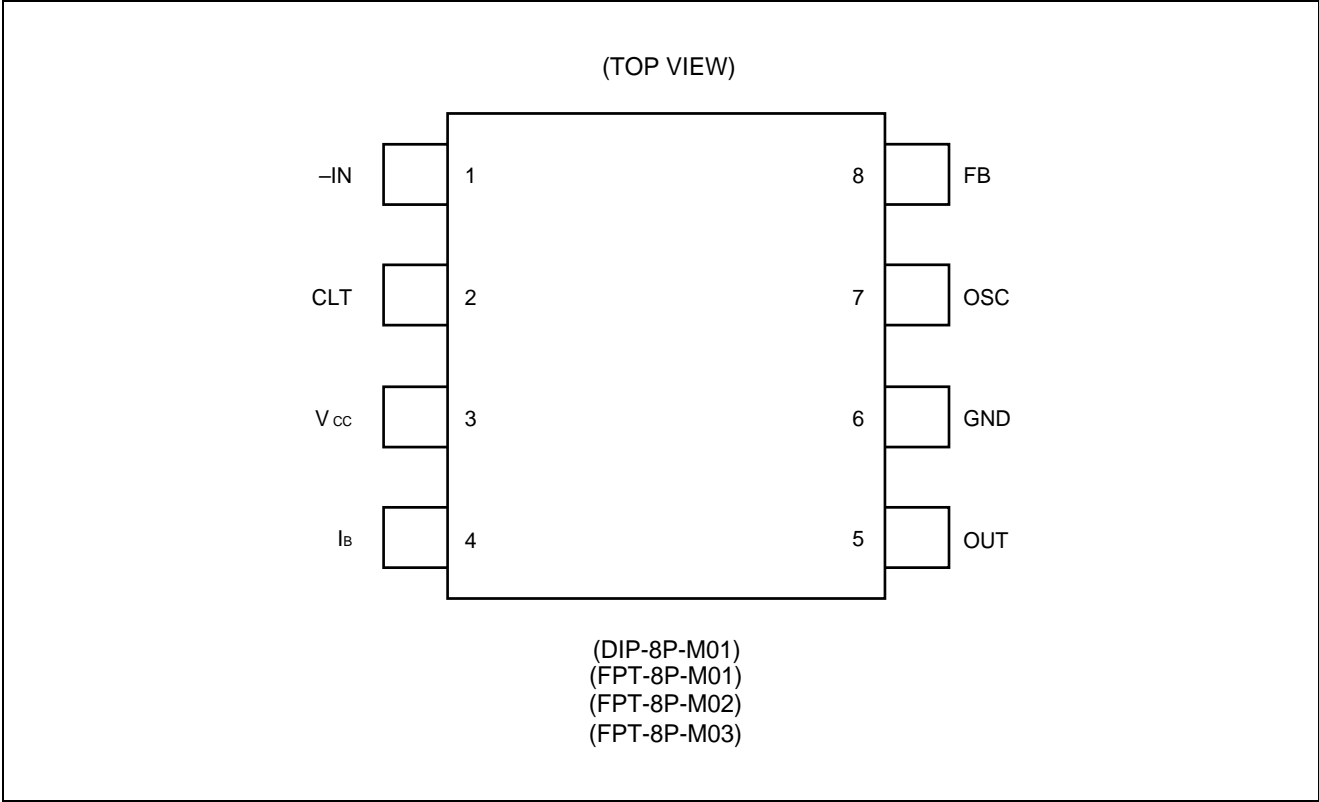
8-pin Plastic SSOP



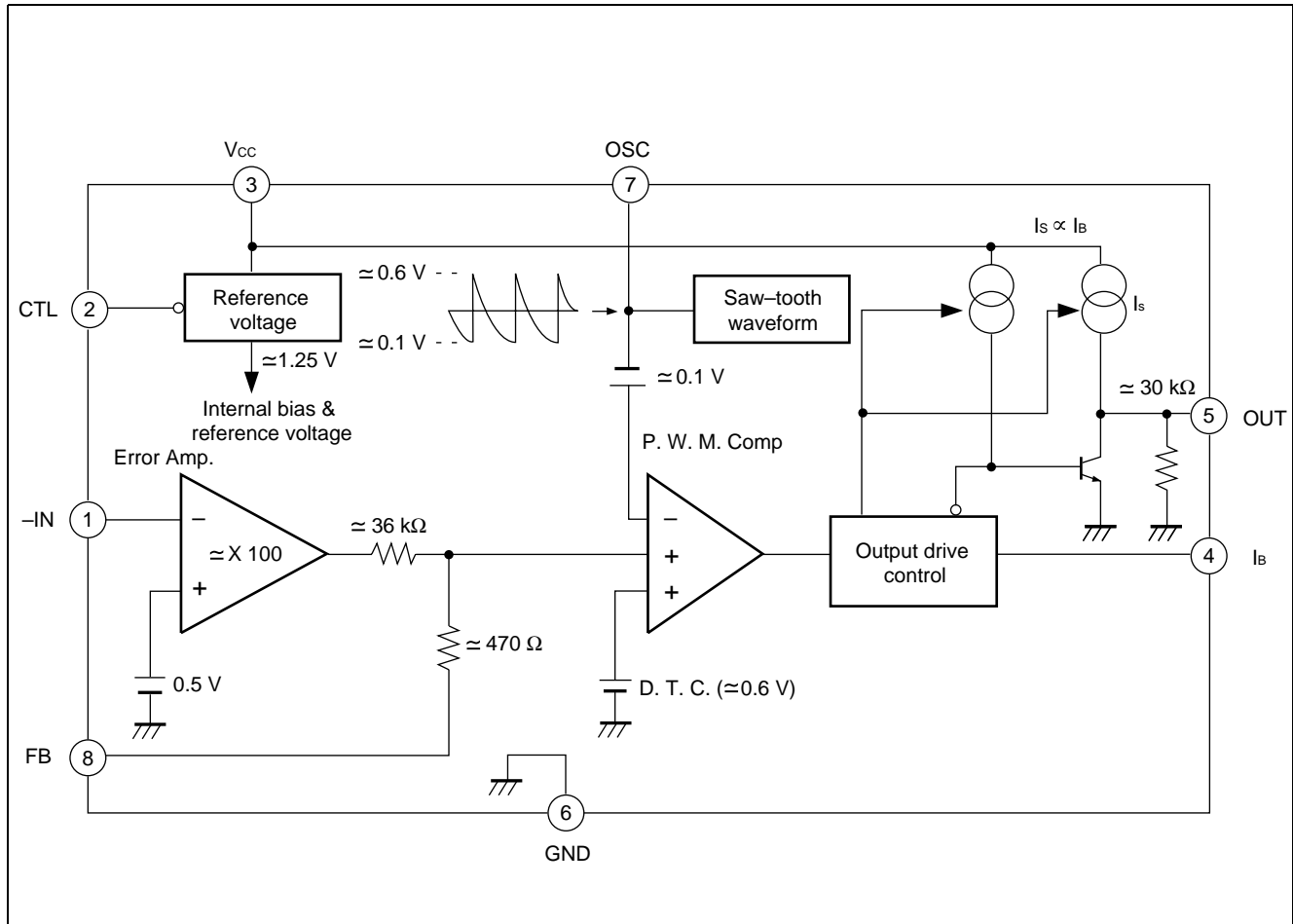
(FPT-8P-M03)

MB3776A

■ PIN ASSIGNMENT



■ BLOCK DIAGRAM



MB3776A

■ ABSOLUTE MAXIMUM RATINGS

(Ta = +25°C)

Parameter	Symbol	Condition	Rating		Unit	
			Min.	Max.		
Power supply voltage	V _{CC}	—	—	16	V	
Error amp. input voltage	V _I	—	-0.3	+10	V	
Output source current	I _{SOURCE}	—	—	-50	mA	
Output sink current	I _{SINK}	—	—	50	mA	
Power dissipation	P _D	Ta ≤ +25°C (DIP)		—	550	mW
		Ta ≤ +25°C (SOP)	EIAJ	—	*570	mW
			JEDEC	—	*430	mW
		Ta < +25°C (SSOP)		—	*580	mW
Operating temperature	T _{OP}	—	-30	+75	°C	
Storage temperature	T _{STG}	—	-55	+125	°C	

* : The packages are mounted on the epoxy board (10 cm × 10 cm × 1.5 mm)

WARNING: Semiconductor devices can be permanently damaged by application of stress (voltage, current, temperature, etc.) in excess of absolute maximum ratings. Do not exceed these ratings.

■ RECOMMENDED OPERATING CONDITIONS

Parameter	Symbol	Value			Unit
		Min.	Typ.	Max.	
Power supply voltage	V _{CC}	2.0	—	15	V
Error amp. input voltage	V _I	-0.2	—	1.0	V
Output source current	I _{SOURCE}	-40	—	—	mA
Output sink current	I _{SINK}	—	—	40	mA
Phase compensation capacitor	C _P	—	0.1	—	μF
Timing capacitor	C _T	100	1000	10000	pF
Timing resistor	R _T	1.0	3.0	5.0	kΩ
Oscillator frequency	f _{OSC}	10	200	500	kHz
Operating temperature	T _{OP}	-30	25	75	°C

WARNING: Recommended operating conditions are normal operating ranges for the semiconductor device. All the device's electrical characteristics are warranted when operated within these ranges.

Always use semiconductor devices within the recommended operating conditions. Operation outside these ranges may adversely affect reliability and could result in device failure.

No warranty is made with respect to uses, operating conditions, or combinations not represented on the data sheet. Users considering application outside the listed conditions are advised to contact their FUJITSU representative beforehand.

■ ELECTRICAL CHARACTERISTICS

1. Reference Section and Error Amp. Section

(Ta = +25°C, Vcc = 3 V)

Parameter	Symbol	Condition	Value			Unit
			Min.	Typ.	Max.	
Input threshold voltage	V _T	V _{FB} = 450 mV	487	507	527	mV
V _T input stability	V _{TdV1}	V _{CC} = 2.0 V to 6.0 V	-5	—	5	mV
	V _{TdV2}	V _{CC} = 6.0 V to 15 V	-5	—	5	mV
V _T temp. stability	V _{TdT}	Ta = -30°C to +75°C	-3	—	3	%
Input bias current	I _B	V _{IN} = 0 V to 0.6 V	-1.0	-0.2	1.0	μA
Voltage gain	A _V	—	70	100	145	V/V
Frequency band width	BW	A _V = 0 dB	—	6	—	MHz

2. Saw-tooth Waveform Oscillator Section

(Ta = +25°C, Vcc = 3 V)

Parameter	Symbol	Condition	Value			Unit
			Min.	Typ.	Max.	
Oscillator frequency	f _{osc}	R _T = 3.0 kΩ C _T = 1000 pF	160	200	240	kHz
Frequency input stability	f _{dV}	V _{CC} = 2.0 V to 15 V	—	±2	—	%
Frequency temp. stability	f _{dT}	Ta = -30°C to +75°C	—	±10	—	%

3. Under Lockout Protection

(Ta = +25°C, Vcc = 3 V)

Parameter	Symbol	Condition	Value			Unit
			Min.	Typ.	Max.	
Threshold voltage	V _{TH}	—	—	1.4	—	V

4. Dead-time Control Section

(Ta = +25°C, Vcc = 3 V)

Parameter	Symbol	Condition	Value			Unit
			Min.	Typ.	Max.	
Max. duty cycle	t _{DUTY}	C _T = 1000 pF R _T = 3.0kΩ V _{FB} = 0.9 V	60	70	85	%

MB3776A

5. Output Section

($T_a = +25^\circ\text{C}$, $V_{CC} = 3\text{ V}$)

Parameter	Symbol	Condition	Value			Unit
			Min.	Typ.	Max.	
Output source current	I_{SOURCE}	$R_B = 820\ \Omega$, $V_O = 1\text{ V}$	-40	-30	-20	mA
Output sink current	I_{SINK}	$R_B = 820\ \Omega$, $V_O = 0.3\text{ V}$	30	60	—	mA
High-level output voltage	V_{OH}	$R_B = 820\ \Omega$, $V_O = 7\text{ V}$ $I_O = -15\text{ mA}$	5.5	6.0	—	V
Output voltage	V_{OL}	$V_{CTL} = V_{CC}$, $I_O = 3\ \mu\text{A}$	—	0.1	0.2	V

6. Control Section

($T_a = +25^\circ\text{C}$, $V_{CC} = 3\text{ V}$)

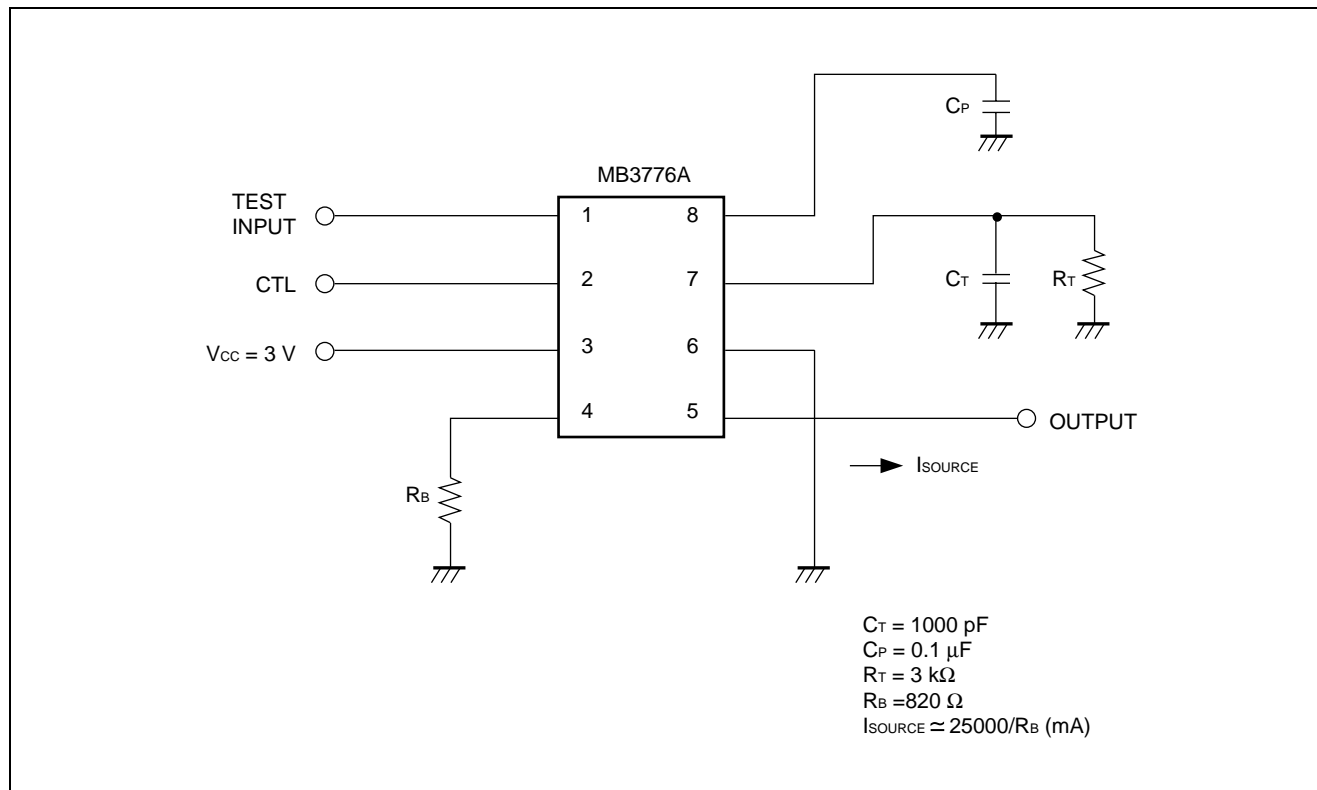
Parameter	Symbol	Condition	Value			Unit
			Min.	Typ.	Max.	
Input off condition	I_{OFF}	—	-300	—	—	μA
Input on condition	I_{ON}	—	—	—	-700	μA
Control terminal current	I_{CTL}	$V_{CC} = 7\text{ V}$, $V_{CTL} = 0\text{ V}$	-1.3	-1	—	mA

7. All Device

($T_a = +25^\circ\text{C}$, $V_{CC} = 3\text{ V}$)

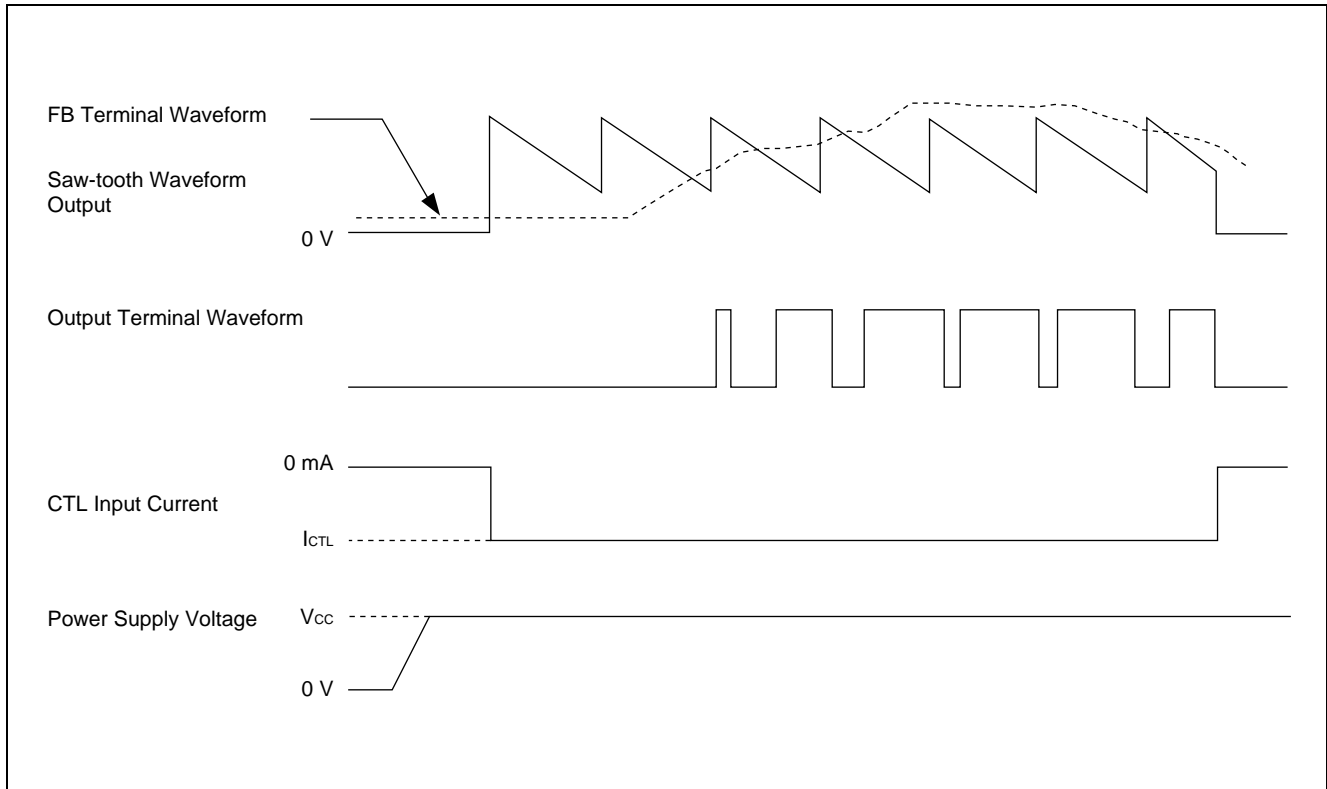
Parameter	Symbol	Condition	Value			Unit
			Min.	Typ.	Max.	
Stand by current	I_{CCS}	$V_{CTL} = V_{CC}$ or CTL terminal open	—	—	0.5	μA
Average supply current	I_{CC}	$I_{CTL} = -700\ \mu\text{A}$ $R_B = 820\ \Omega$	—	4.5	8	mA

MEASUREMENT CIRCUIT



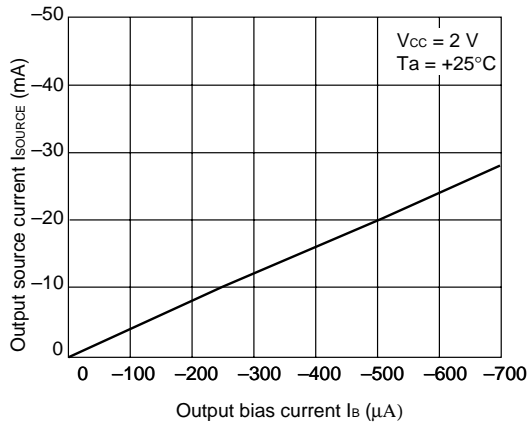
MB3776A

■ DIAGRAM

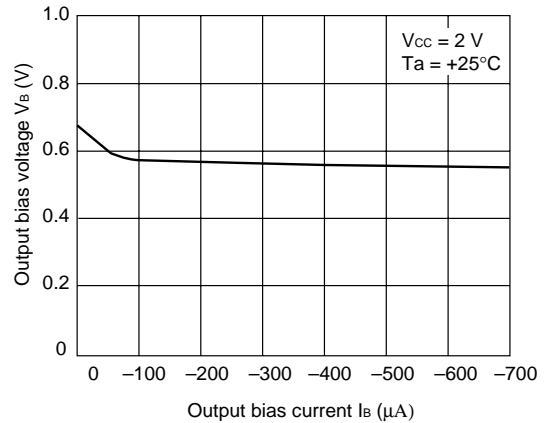


TYPICAL CHARACTERISTIC

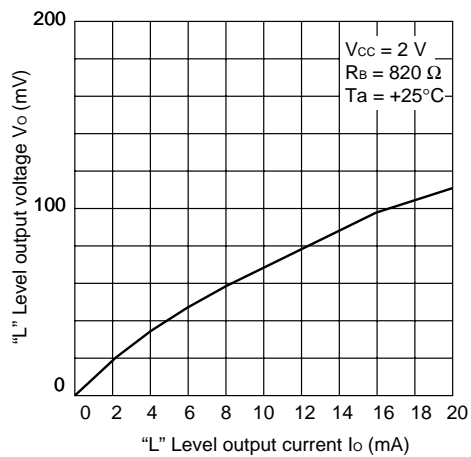
Output bias current vs. Output source current



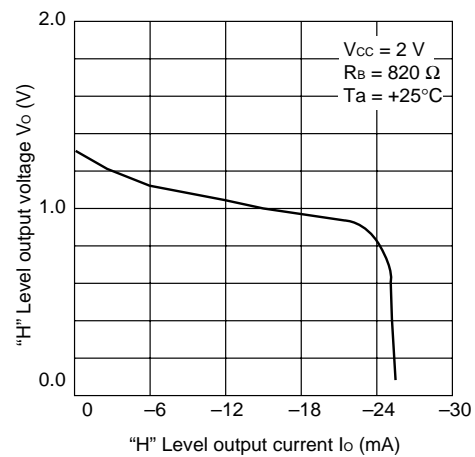
Output bias current vs. Output bias voltage



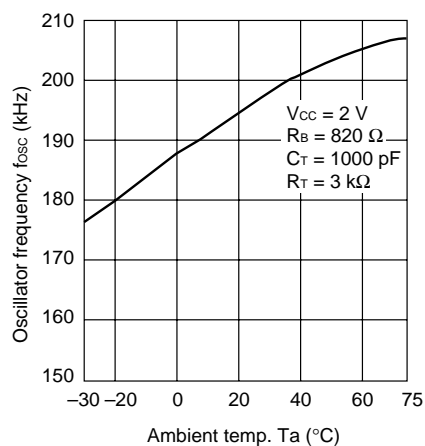
“L” Level output



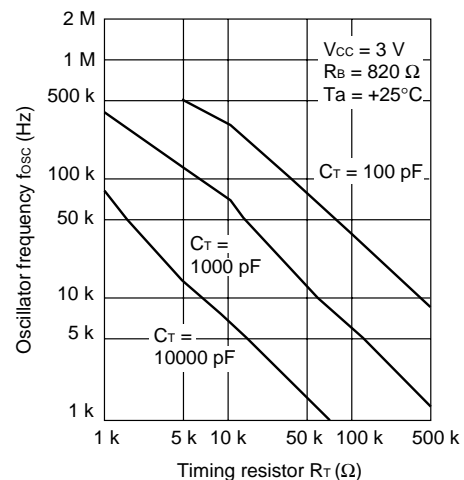
“H” Level output



Ambient temp. vs. Oscillator frequency



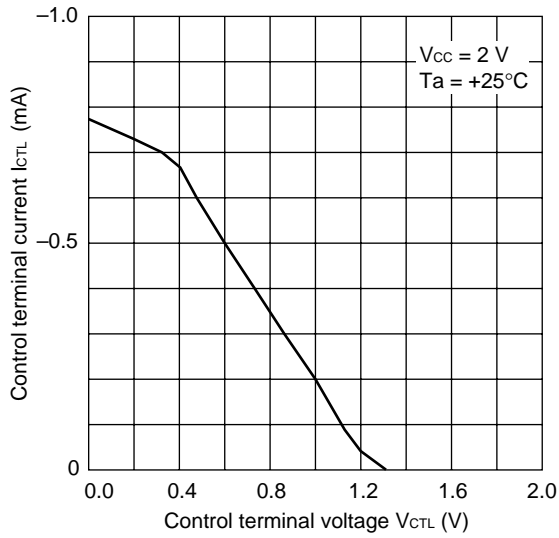
Timing resistor vs. Oscillator frequency



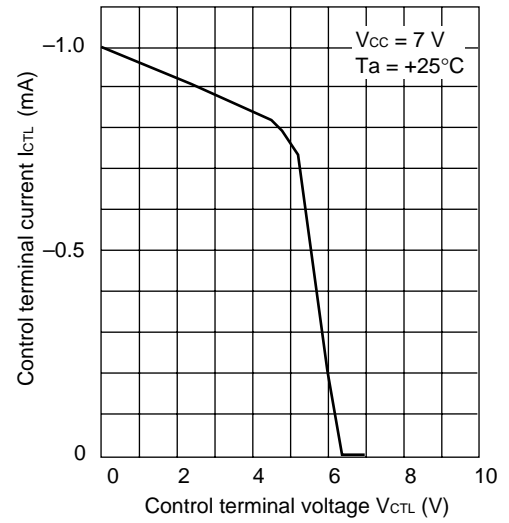
(Continued)

(Continued)

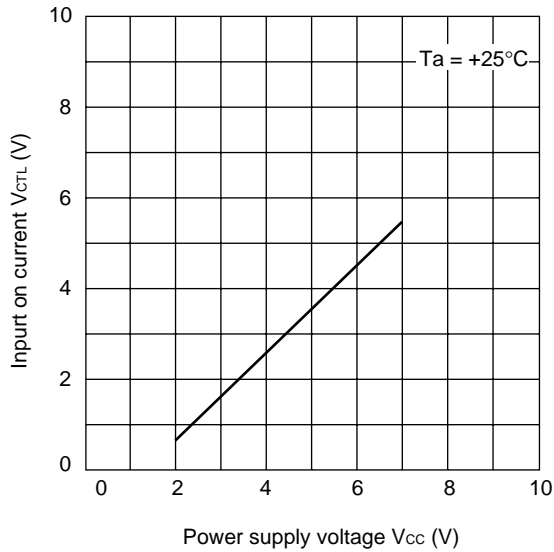
Control terminal voltage vs. Control terminal current



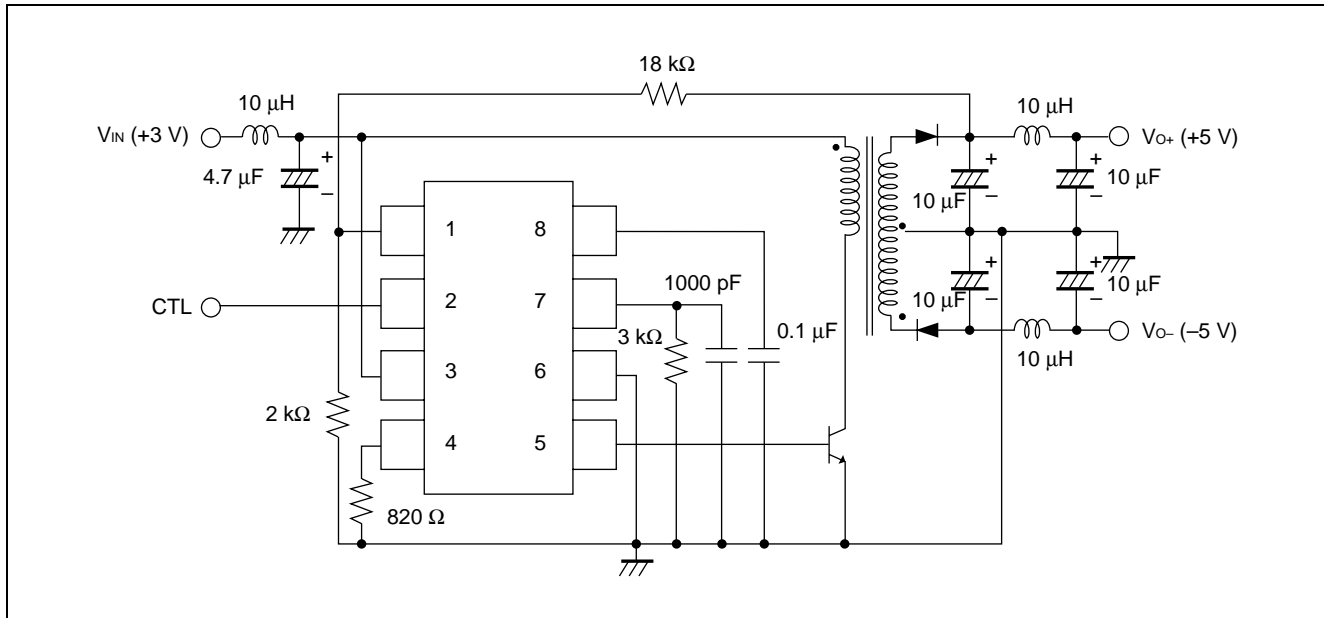
Control terminal voltage vs. Control terminal current



Power supply voltage vs. Input on voltage

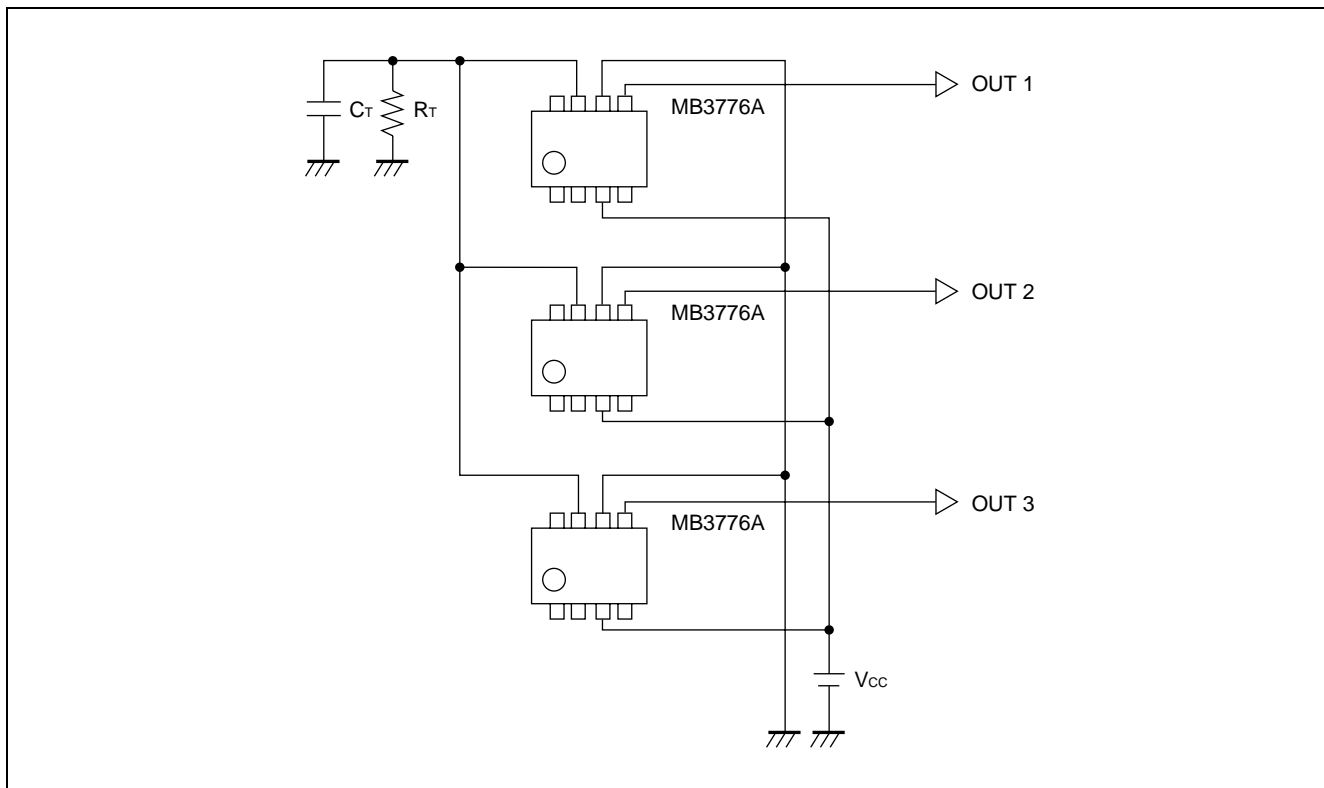


APPLICATION EXAMPLE



Synchronization

To synchronize MB3776A controllers, the OSC terminal of each IC is shared and the same specified capacitor and resistor used on a signal IC application is connected for self-excitation oscillation. The CTL terminal controls power on/off of each IC.



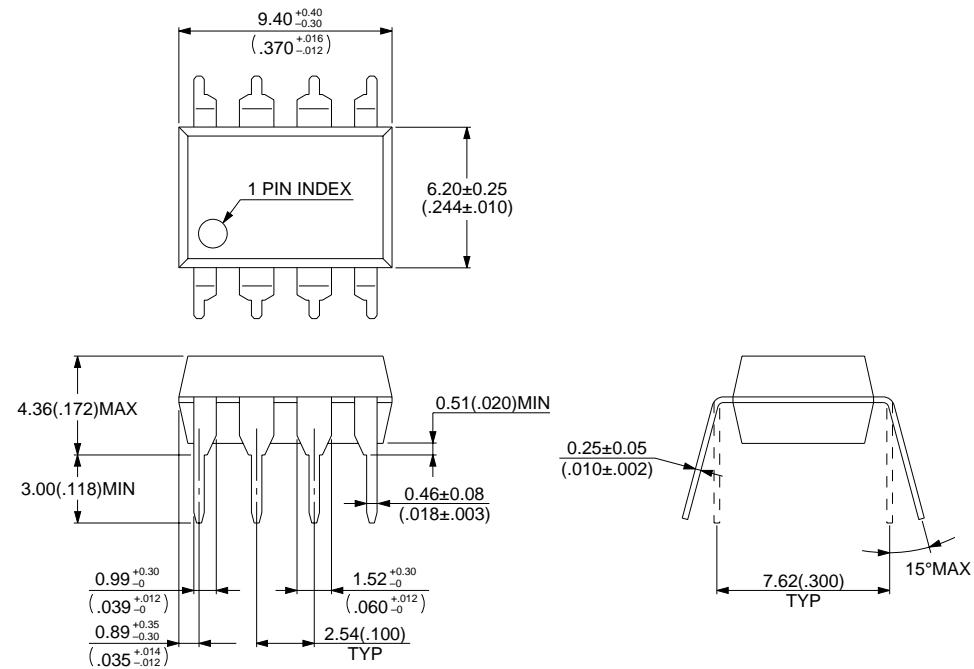
MB3776A

■ ORDERING INFORMATION

Part number	Package	Remarks
MB3776A-P	8-pin Plastic DIP (DIP-8P-M01)	
MB3776APF	8-pin Plastic SOP (FPT-8P-M01)	
MB3776APNF	8-pin Plastic SOL (FPT-8P-M02)	
MB3776APFV	8-pin Plastic SSOP (FPT-8P-M03)	

■ PACKAGE DIMENSIONS

8-pin Plastic DIP
(DIP-8P-M01)



© 1994 FUJITSU LIMITED D08006S-2C-3

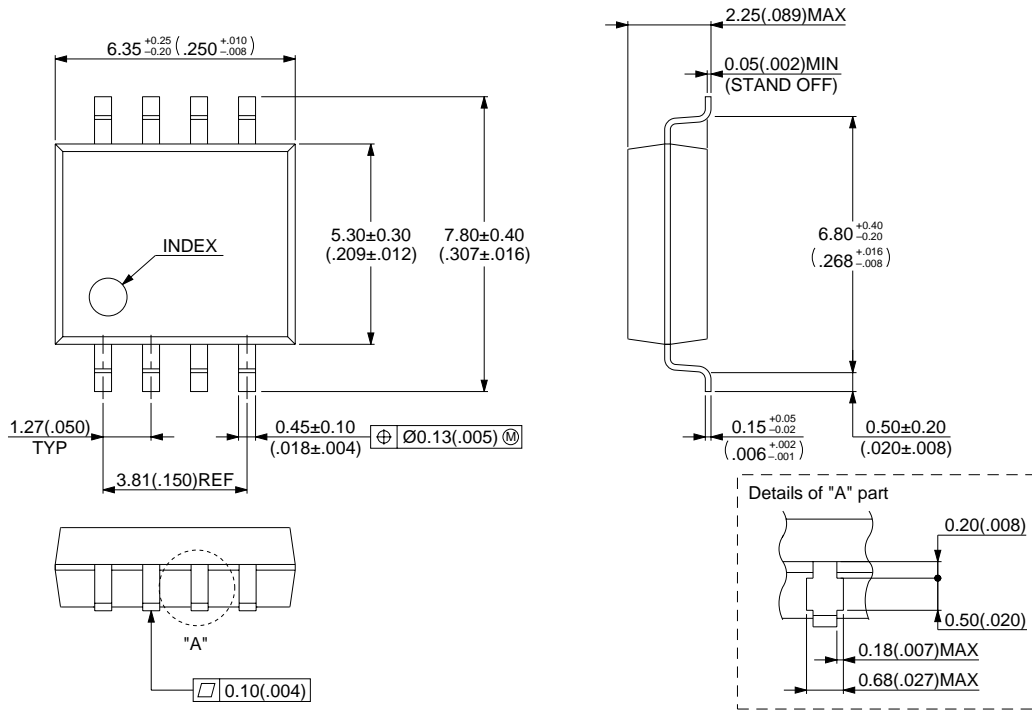
Dimensions in mm (inches).

(Continued)

MB3776A

(Continued)

8-pin Plastic SOP (FPT-8P-M01)



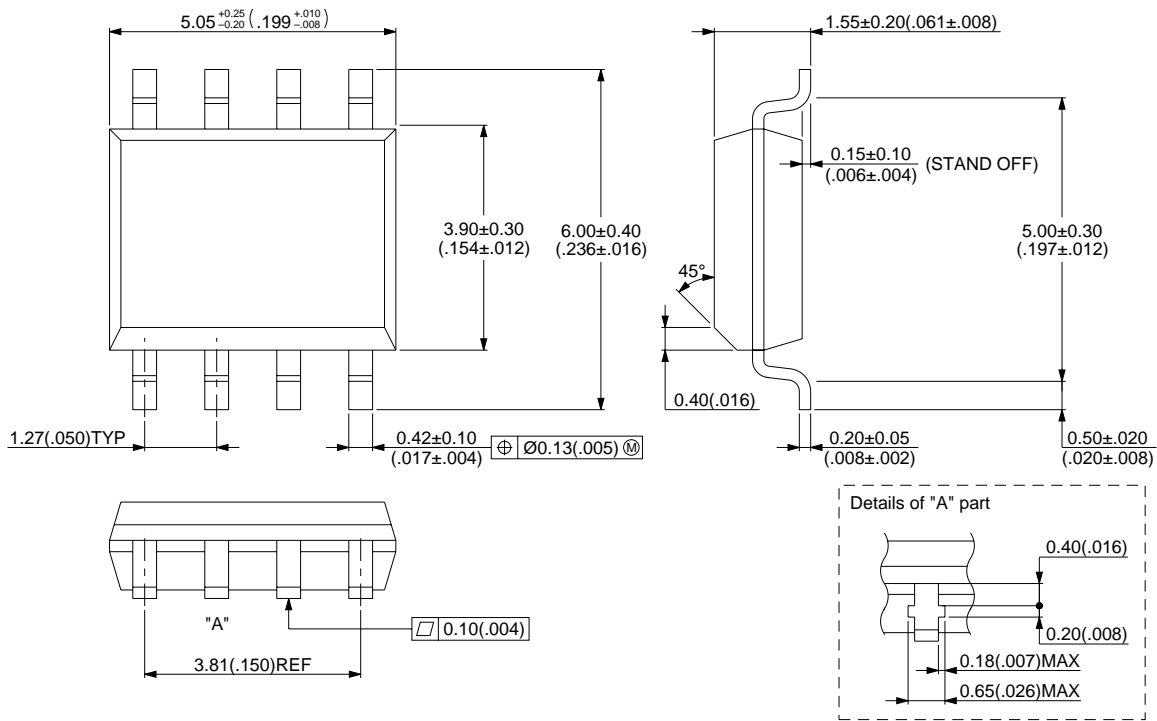
© 1994 FUJITSU LIMITED F08002S-4C-4

Dimensions in mm (inches).

(Continued)

(Continued)

8-pin Plastic SOL (FPT-8P-M02)



© 1994 FUJITSU LIMITED F08004S-2C-4

Dimensions in mm (inches).

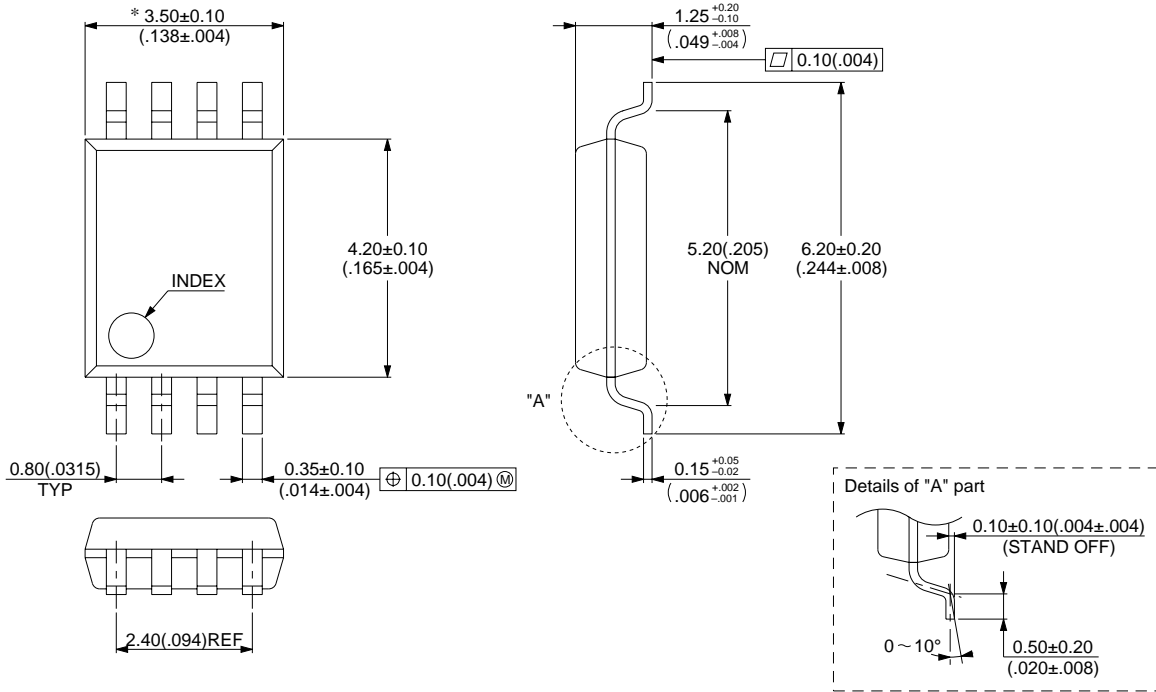
(Continued)

MB3776A

(Continued)

8-pin Plastic SSOP
(FPT-8P-M03)

* : This dimension does not include resin protrusion.



© 1994 FUJITSU LIMITED F08005S-1C-2

Dimensions in mm (inches).

FUJITSU LIMITED

All Rights Reserved.

The contents of this document are subject to change without notice. Customers are advised to consult with FUJITSU sales representatives before ordering.

The information and circuit diagrams in this document are presented as examples of semiconductor device applications, and are not intended to be incorporated in devices for actual use. Also, FUJITSU is unable to assume responsibility for infringement of any patent rights or other rights of third parties arising from the use of this information or circuit diagrams.

The products described in this document are designed, developed and manufactured as contemplated for general use, including without limitation, ordinary industrial use, general office use, personal use, and household use, but are not designed, developed and manufactured as contemplated (1) for use accompanying fatal risks or dangers that, unless extremely high safety is secured, could have a serious effect to the public, and could lead directly to death, personal injury, severe physical damage or other loss (i.e., nuclear reaction control in nuclear facility, aircraft flight control, air traffic control, mass transport control, medical life support system, missile launch control in weapon system), or (2) for use requiring extremely high reliability (i.e., submersible repeater and artificial satellite).

Please note that Fujitsu will not be liable against you and/or any third party for any claims or damages arising in connection with above-mentioned uses of the products.

Any semiconductor devices have an inherent chance of failure. You must protect against injury, damage or loss from such failures by incorporating safety design measures into your facility and equipment such as redundancy, fire protection, and prevention of over-current levels and other abnormal operating conditions.

If any products described in this document represent goods or technologies subject to certain restrictions on export under the Foreign Exchange and Foreign Trade Law of Japan, the prior authorization by Japanese government will be required for export of those products from Japan.

F9802
© FUJITSU LIMITED Printed in Japan