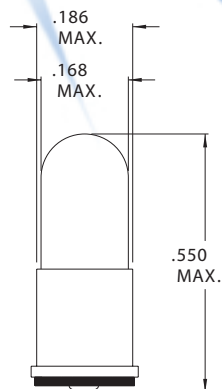
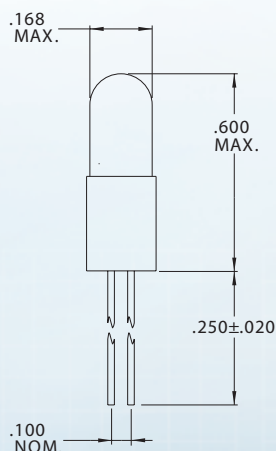


T-1 1/4 Special Midget Flange Base



| Part Number | Design Voltage | Amps | MSCP | Life Hours | Filament Type |
|-------------|----------------|------|------|------------|---------------|
| CM7302 | 1.30 | .030 | .006 | 100 | S-2 |
| CM8636 | 1.35 | .060 | .006 | 500 | C-2R |
| CM8656 | 2.50 | .400 | .550 | 30 | C-2R |
| CM8637 | 3.00 | .190 | .250 | 350 | C-2R |
| CM3518 | 5.00 | .115 | .150 | 40,000 | C-2R |
| CM3582 | 5.00 | .060 | .030 | 60,000 | C-2R |
| CM3585 | 5.00 | .060 | .050 | 25,000 | C-2R |
| CM8541 | 6.00 | .060 | .130 | 3,000 | C-2R |
| CM8628 | 6.00 | .200 | .630 | 1,000 | C-2R |
| CM8551 | 6.30 | .200 | .550 | 5,000 | C-2R |
| CM8646 | 14.00 | .080 | .500 | 1,000 | C-2F |
| CM737 | 28.00 | .050 | .300 | 16,000 | C-2F |
| CM8632 | 28.00 | .040 | .320 | 1,000 | C-2F |

T-1 1/4 Bi-Pin Base (.100")



| Part Number | Design Voltage | Amps | MSCP | Life Hours | Filament Type |
|-------------|----------------|------|------|------------|---------------|
| CM7306 | 1.30 | .030 | .006 | 100 | S-2 |
| CM7636 | 1.35 | .060 | .006 | 500 | C-2R |
| CM7307 | 2.50 | .400 | .550 | 30 | C-2R |
| CM7637 | 3.00 | .190 | .250 | 350 | C-2R |
| CM7515 | 5.00 | .115 | .150 | 40,000 | C-2R |
| CM7580 | 5.00 | .060 | .030 | 60,000 | C-2R |
| CM7583 | 5.00 | .060 | .050 | 25,000 | C-2R |
| CM7309 | 6.00 | .060 | .130 | 3,000 | C-2R |
| CM7628 | 6.00 | .200 | .630 | 1,000 | C-2R |
| CM7310 | 6.30 | .200 | .550 | 5,000 | C-2R |
| CM7646 | 14.00 | .080 | .500 | 1,000 | C-2F |
| CM7052 | 28.00 | .030 | .200 | 5,000 | C-2F |
| CM7632 | 28.00 | .040 | .320 | 1,000 | C-2F |