

# OSCILLATORS OSCILLATORS OSCILLATORS OSC

MICROSONICS INC 97 D 6116225 0000232 7

## Temperature Compensated Crystal Oscillators (TCXO)

MODEL	PACKAGE (Inches)	FREQUENCY RANGE	TEMPERATURE STABILITY OPTION	INPUT SUPPLY VOLTAGE B+	OUTPUT OPTIONS	FREQUENCY ADJUST
10	1.400 x 0.80 x 0.38 (24 Pin DIP)	50 KHz to 30 MHz	A thru J except E	+5 Vdc	T, C, HC	1, 2
20	1.77 x 1.27 x 0.240 Low profile	50 KHz to 30 MHz	A thru J	+5 Vdc	T, C, HC	1, 2
30	1.0 x 1.0 x 0.36	50 KHz to 30 MHz	A, D, H, J	+5 Vdc	T, C, HC	1, 2
40	1.5 x 1.5 x 0.50	50 KHz to 30 MHz	A thru J	+15 Vdc	T, C, HC	1, 2
50	2 x 2 x 0.50	10 KHz to 120 MHz	A thru J	+15 Vdc	S, T, C, HC	1
60	2 x 3 x 0.75	50 MHz to 600 MHz	A thru J	+15 Vdc	S, E	1

### Temperature Stability Options

- A:  $\pm 1 \times 10^{-7}$  +20°C, +30°C
- B:  $\pm 2 \times 10^{-7}$  0°C, +50°C
- C:  $\pm 5 \times 10^{-7}$  -20°C, +70°C
- D:  $\pm 1 \times 10^{-6}$  0°C, +50°C
- E:  $\pm 1 \times 10^{-6}$  -55°C, +85°C
- F:  $\pm 2 \times 10^{-6}$  -55°C, +85°C
- G:  $\pm 5 \times 10^{-6}$  -55°C, +105°C
- H:  $\pm 15 \times 10^{-6}$  -45°C, +95°C
- J:  $\pm 20 \times 10^{-6}$  -45°C, +95°C

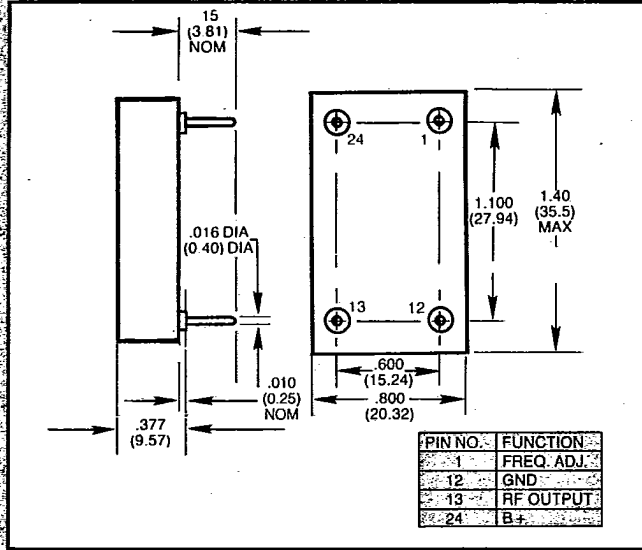
### Output Options

- S: Sinusoidal
- T: TTL
- C: CMOS/4000 Series
- E: ECL
- HC: High Speed CMOS

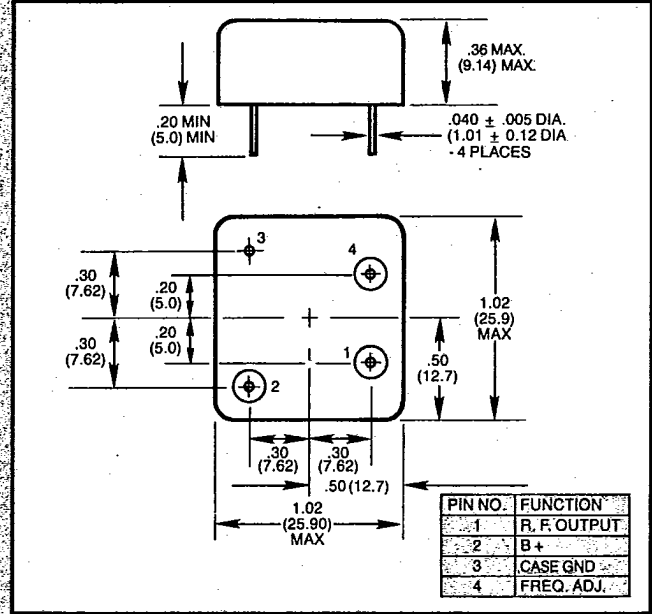
### Frequency Adjust Options

- 1: Screw Driver
- 2: External Voltage

## Crystal Oscillator Outlines



Model 10



Model 30

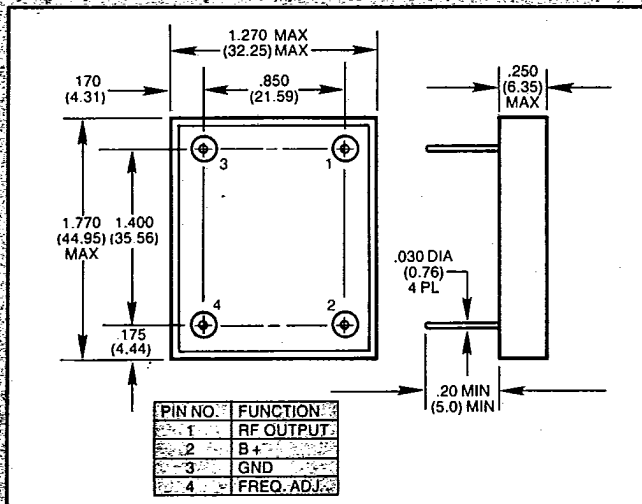
**Note:** TCXO and VCXO packages are identical. Freq. Adj. is designated Control Volt on VCXO Models 10 thru 40.

**Note:** All dimensions in inches. Metric equivalent in parentheses. Tolerances: XX 0.02 (.50) XXX 0.010 (.25)

## TCXO Ordering Guide



**Example:** For a 24.999 MHz TCXO with a  $1 \times 10^{-7}$  ppm stability over +20°C to +30°C operating temperature range and with a TTL output in a 24 pin DIP configuration, formulate the following part number: **TC10-024.999-A-T-2**



Model 20