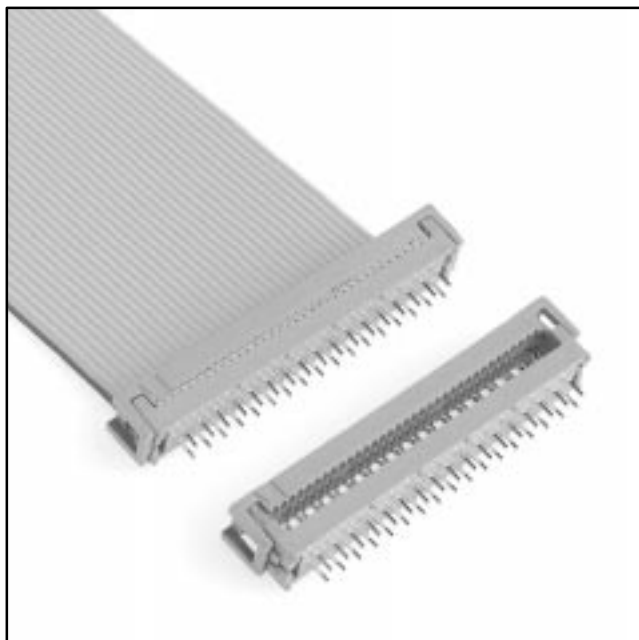


# .100" × .100" PCB

Two Row

3900 Series



- Fits standard .100 inch × .100 inch header layout
- Uses less board area than 4-row design
- Optional strain relief

Date Modified: February 19, 1999

TS-0004-13  
Sheet 1 of 3

---

## Physical

### Insulation

Material: Glass Filled Polyester (PBT)  
Flammability: UL 94V-0  
Color: Gray

### Contact

Material: See Ordering Information  
Plating  
Underplate: 2.5  $\mu\text{m}$  [100  $\mu\text{''}$ ] Nickel — QQ-N-290, Class 2  
U-Slot & Solder Tails: 5.1  $\mu\text{m}$  [200  $\mu\text{''}$ ] [ 90/10 ] Tin Lead — MIL-P-81728

**Marking:** 3M Logo, Part Identification Number

### Strain Relief

Material: Stainless Steel, 0.38 [0.15] Thk  
Gray PVC

**Wire Accommodation:** Solid or Stranded 26 & 28 AWG

---

## Electrical

**Current Rating:** 1 A

**Insulation Resistance:**  $> 1 \times 10^9 \Omega$  at 500 Vdc

**Withstanding Voltage:** 1000 Vrms at Sea Level

---

## Environmental

**Temperature Rating:**  $-55^\circ\text{C}$  to  $+105^\circ\text{C}$

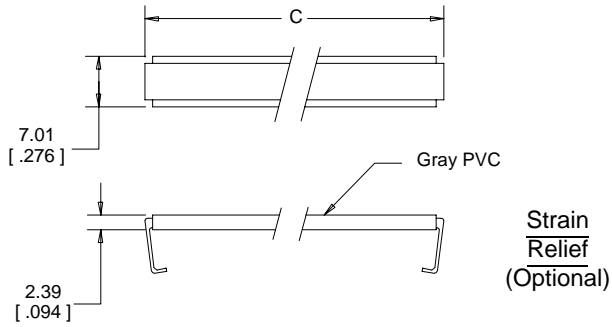
UL File No.: E68080

---

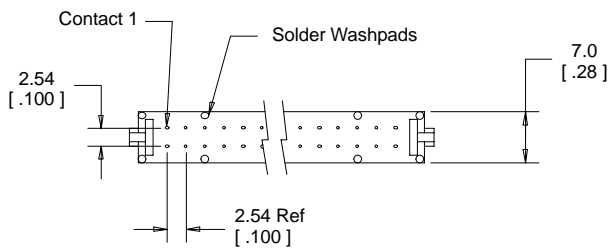
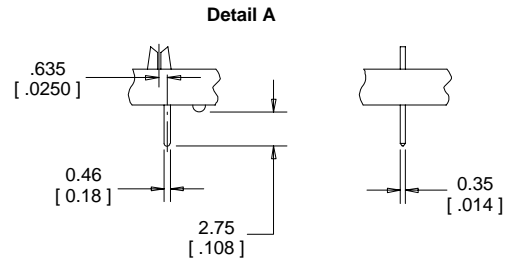
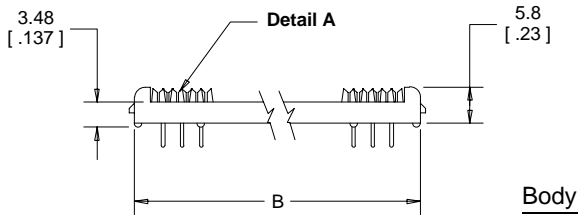
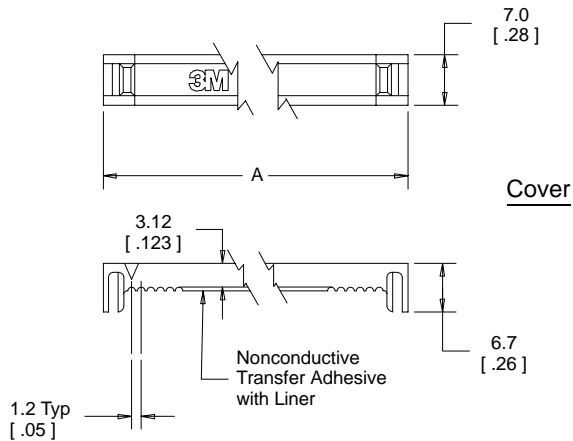
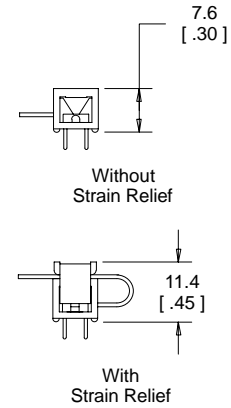
### 3M Interconnect Solutions Division

6801 River Place Blvd.  
Austin, TX 78726-9000

For technical, sales or ordering information call  
**800-225-5373**



**Assembled Height**



mm [Inch]		
Tolerance Unless Noted		
	.0	.00
mm	±.3	±.13

[ ] Dimensions for Reference only

**Ordering Information**

**Connector  
39XX-X0X0T**

Contact Quantity  
(See Table)

Contact Material:  
0 = Be Cu (C172) (Standard)  
2 = Phosphor Bronze (Special Order)

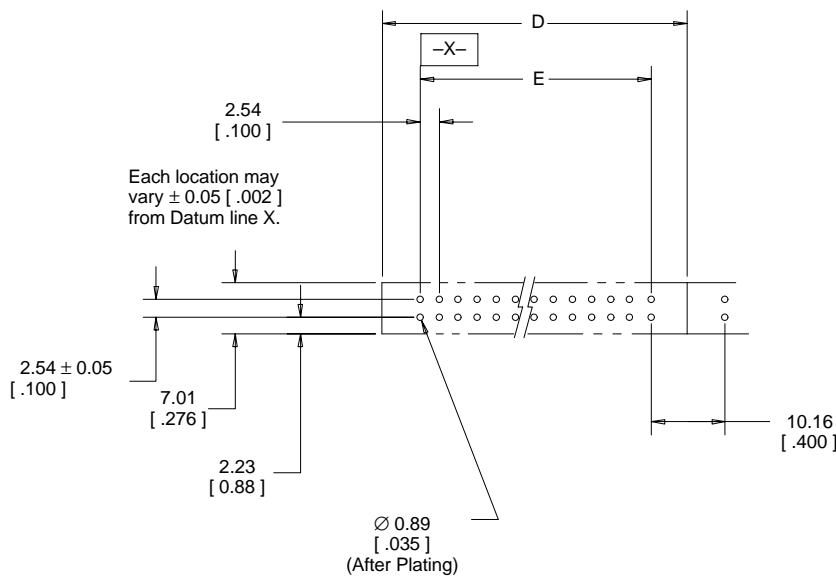
Cover Style:  
0 = Cover, Two Piece, with Adhesive  
1 = Cover, Preassembled No Adhesive

**Strain Relief  
(Optional)  
3448-39XX**

Contact Quantity  
(See Table)

TS-0004-13  
Sheet 2 of 3

Contact Quantity	Dimensions				
	A	B	C	D	E
06	15.2 [ 0.60 ]	12.8 [ 0.50 ]	14.6 [ 0.57 ]	15.2 [ 0.60 ]	5.1 [ 0.20 ]
08	17.7 [ 0.70 ]	15.3 [ 0.60 ]	17.1 [ 0.67 ]	17.7 [ 0.70 ]	7.6 [ 0.30 ]
10	20.4 [ 0.80 ]	17.8 [ 0.70 ]	19.8 [ 0.78 ]	20.4 [ 0.80 ]	10.2 [ 0.40 ]
14	25.5 [ 1.00 ]	22.9 [ 0.90 ]	25.0 [ 0.98 ]	25.5 [ 1.00 ]	15.2 [ 0.60 ]
16	28.1 [ 1.10 ]	25.5 [ 1.00 ]	27.4 [ 1.08 ]	28.1 [ 1.10 ]	17.8 [ 0.70 ]
20	33.1 [ 1.30 ]	30.5 [ 1.20 ]	32.5 [ 1.28 ]	33.1 [ 1.30 ]	22.9 [ 0.90 ]
24	38.0 [ 1.50 ]	35.6 [ 1.40 ]	37.4 [ 1.47 ]	38.0 [ 1.50 ]	27.9 [ 1.10 ]
26	40.8 [ 1.60 ]	38.2 [ 1.50 ]	40.0 [ 1.57 ]	40.8 [ 1.60 ]	30.5 [ 1.20 ]
30	45.6 [ 1.80 ]	43.2 [ 1.70 ]	45.0 [ 1.77 ]	45.6 [ 1.80 ]	35.6 [ 1.40 ]
34	50.9 [ 2.00 ]	48.3 [ 1.90 ]	50.3 [ 1.98 ]	50.9 [ 2.00 ]	40.6 [ 1.60 ]
36	53.3 [ 2.10 ]	50.9 [ 2.00 ]	52.6 [ 2.07 ]	53.3 [ 2.10 ]	43.2 [ 1.70 ]
40	58.5 [ 2.30 ]	55.9 [ 2.20 ]	58.0 [ 2.28 ]	58.5 [ 2.30 ]	48.3 [ 1.90 ]
50	71.2 [ 2.80 ]	68.6 [ 2.70 ]	70.6 [ 2.78 ]	71.2 [ 2.80 ]	61.0 [ 2.40 ]
60	83.9 [ 3.30 ]	81.3 [ 3.20 ]	83.3 [ 3.28 ]	83.9 [ 3.30 ]	73.7 [ 2.90 ]
64	89.0 [ 3.50 ]	86.4 [ 3.40 ]	88.4 [ 3.48 ]	89.0 [ 3.50 ]	78.7 [ 3.10 ]



Recommended Board Layout