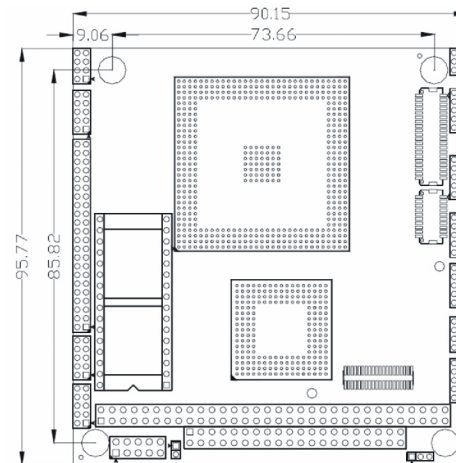
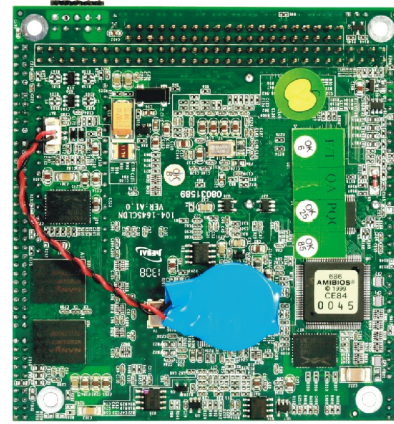
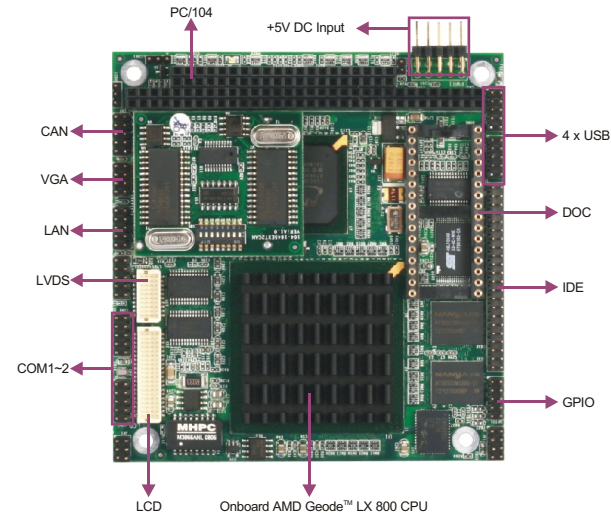


104-1645CLDN

PC/104 SBC with AMD Geode CPU/Memory and LCD/VGA/LAN



Features

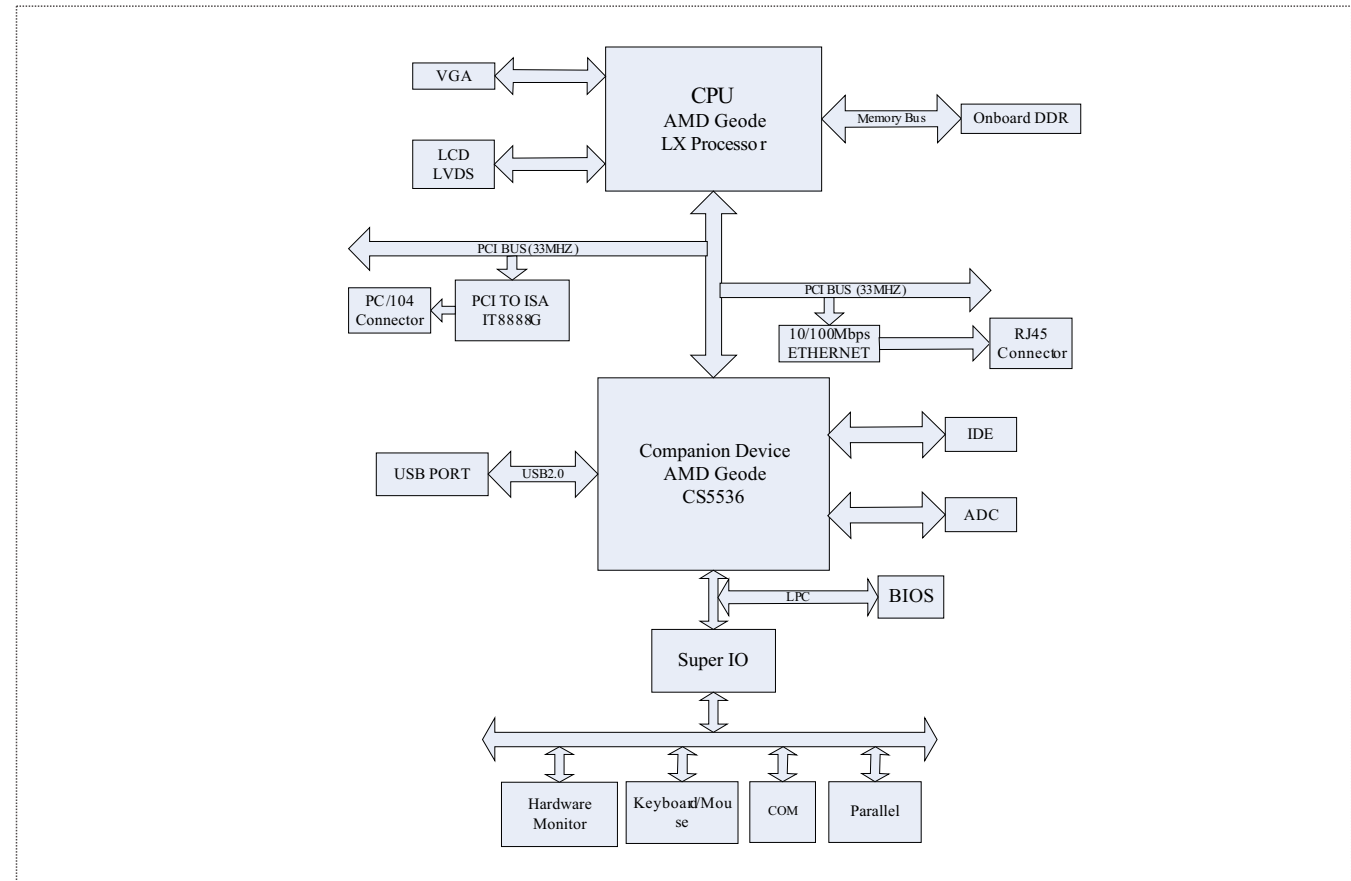
- Onboard AMD Geode™ LX800 500MHz CPU (compatible with LX700/LX900)
- Onboard 256MB DDRAM memory
- 10/100M Ethernet controller
- Supports VGA&18/24-bit TFT LCD&LVDS
- Single +5V power supply

Specifications

System	
Processor	Onboard AMD Geode™ Lx800 CPU (compatible with LX700/LX900)
Chipset	CS5536
Memory	Onboard 256MB DDR SDRAM (optional)
Hardware Monitor	N/A
Watchdog Timer	1~255 sec./min. timer system reset or interrupt, setup by software
Expansion Interface	PC/104 bus
Storage	
IDE	1 x Ultra DMA33 interface, supporting 2 x IDE device
Serial ATA	N/A
Floppy	N/A
CompactFlash	N/A
DOC/DOM	One DOC socket
I/O Interface	
USB	2 x USB2.0
Serial Port	1 x RS-232, 1 x RS232/RS422/RS485
Parallel Port	1 x LPT
CAN	2 x CAN2.0 interface
GPIO	8-channel digital I/O
Audio	N/A

Display	
Display Controller	AMD Geode™ LX800 integrated
Display Memory	16MB shared memory
Resolution	VGA mode: up to 1280 x 1024@256 colors
Dual Display	VGA+LCD, VGA+LVDS dual display
Ethernet	
Chipset	Realtek RTL8100B 10/100M Ethernet controller
Speed	10/100Mbps
Connector	1 x RJ45
Mechanical and Environmental	
Dimensions	90mm x 96mm
Operating Temperature	0°C~60°C (optional -40°C~85°C)
Storage Temperature	-40°C~85°C
Operating Humidity	5%-90%, non-condensing
Power	
Power Supply	Single DC +5V AT power supply
Power Consumption	Typical power consumption 4.6W (AMD LX800, 256MB)
Operating System	
Windows OS	Windows XP
Embedded OS	Linux/XP Embedded
Certification	
	CE, RoHS

Board Diagram



Available Accessories

Part Number	Name	Description	Qty.
—	Driver CD/Protective film/RoHS	104-1645CLDN	1
2330-000011	Jumper/RoHS	2.0mm pitch	7
2360-008781	HDD flat cable/RoHS	40 Pin to 44 Pin (2.0mm pitch), length: 550mm/RoHS	1
2360-011231	Serial port cable/RoHS	DB9 connector to 2x5 Pin connector (2.0mm pitch), length: 300mm/RoHS	2
2360-012641	VGA cable/RoHS	VGA connector to 2x5 Pin connector (2.0mm pitch), length: 300mm/RoHS	1
2360-012651	Power cable/RoHS	One male power 4 Pin (5.08mm pitch) connector to 2x5 Pin, length: 250mm/RoHS	1
2360-014781	Dual USB ports with bracket/RoHS	Two USB ports to one 2x5 Pin connector (2.0mm pitch), length: 550mm/RoHS	2
2360-017481	Multi-functional converter cable/RoHS	Buzzer reset button dual PS/2 connectors to 2x5 Pin 2.0mm pitch female connector, length: 250mm	1
—	Setup Guide/RoHS	AMI/BIOS Setup Guide (for CORE8)	1
—	User's Manual/RoHS	104-1645CLDN	1
2360-012771	Serial port cable/RoHS	2x5 Pin (2.0mm pitch) to 2x5 Pin (2.0mm) connector, length: 300mm	1

Ordering information

Part Number	Model Number	Description
0030-001150	104-1645CLDN	Motherboard
0030-001151	104-1645CLDN	Motherboard/RoHS
0030-010400	104-1645CLDN-2CAN	Motherboard
0030-010401	104-1645CLDN-2CAN	Motherboard/RoHS
0030-010501	104-1645CLDN/TC/Conformal coating	Motherboard/RoHS/TC/Conformal coating