



SAW Components

Data Sheet B4168





SAW Components

B4168

Low-Loss Filter for Mobile Communication

1960,0 MHz

Data Sheet



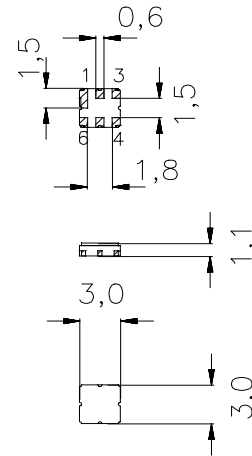
Ceramic package **DCC6C**

Features

- Low-loss RF filter for mobile telephone PCS systems, receive path
- Usable passband 60 MHz
- No matching network required for operation at 50 Ω
- Suitable for GPRS class 1 to 12
- Ceramic Package for **Surface Mounted Technology (SMT)**

Terminals

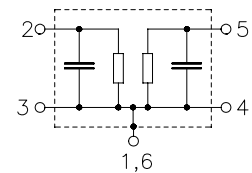
- Ni, gold-plated



Dimensions in mm, approx. weight 0,037 g

Pin configuration

- | | |
|------|-----------------|
| 2 | Input |
| 1, 3 | Input - ground |
| 5 | Output |
| 4, 6 | Output - ground |



Type	Ordering code	Marking and Package according to	Packing according to
B4168	B39202-B4168-U410	C61157-A7-A67	F61074-V8088-Z000

Electrostatic Sensitive Device (ESD)

Maximum ratings

Operable temperature range	T	- 30/+ 75	°C	peak power of GSM signal, duty cycle 4:8
Storage temperature range	T_{stg}	- 40/+ 85	°C	
DC voltage	V_{DC}	3	V	
Input power at GSM850, GSM900	P_{IN}	15	dBm	
GSM1800, GSM1900	P_{IN}	12	dBm	
Tx bands				



Data Sheet



Characteristics

Operating temperature range: $T = +25 \pm 2^\circ\text{C}$
 Terminating source impedance: $Z_S = 50 \Omega$
 Terminating load impedance: $Z_L = 50 \Omega$

			min.	typ.	max.	
Center frequency	f_c		—	1960,0	—	MHz
Maximum insertion attenuation	α_{\max}		—	2,7	3,5	dB
		1930,0 ... 1990,0 MHz				
Amplitude ripple (p-p)	$\Delta\alpha$		—	1,4	2,2	dB
		1930,0 ... 1990,0 MHz				
Input VSWR			—	1,9	2,1	
		1930,0 ... 1990,0 MHz				
Output VSWR			—	1,9	2,1	
		1930,0 ... 1990,0 MHz				
Attenuation	α					
		10,0 ... 1850,0 MHz	23,0	25,0	—	dB
		1850,0 ... 1910,0 MHz	10,5	14,0	—	dB
		2010,0 ... 2070,0 MHz	10,5	15,0	—	dB
		2070,0 ... 2410,0 MHz	25,0	29,0	—	dB
		2410,0 ... 2910,0 MHz	33,0	37,0	—	dB
		2910,0 ... 4500,0 MHz	25,0	29,0	—	dB
		4500,0 ... 5000,0 MHz	20,0	26,0	—	dB
		5000,0 ... 6000,0 MHz	8,0	10,0	—	dB



Data Sheet



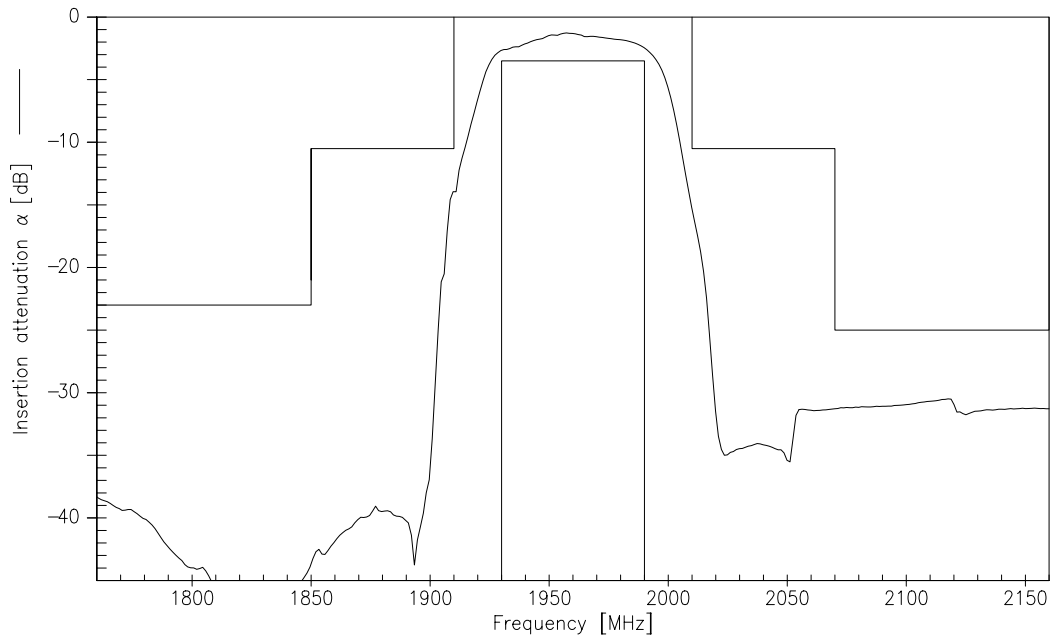
Characteristics

Operating temperature range: $T = -10$ to $+75^{\circ}\text{C}$
 Terminating source impedance: $Z_S = 50\ \Omega$
 Terminating load impedance: $Z_L = 50\ \Omega$

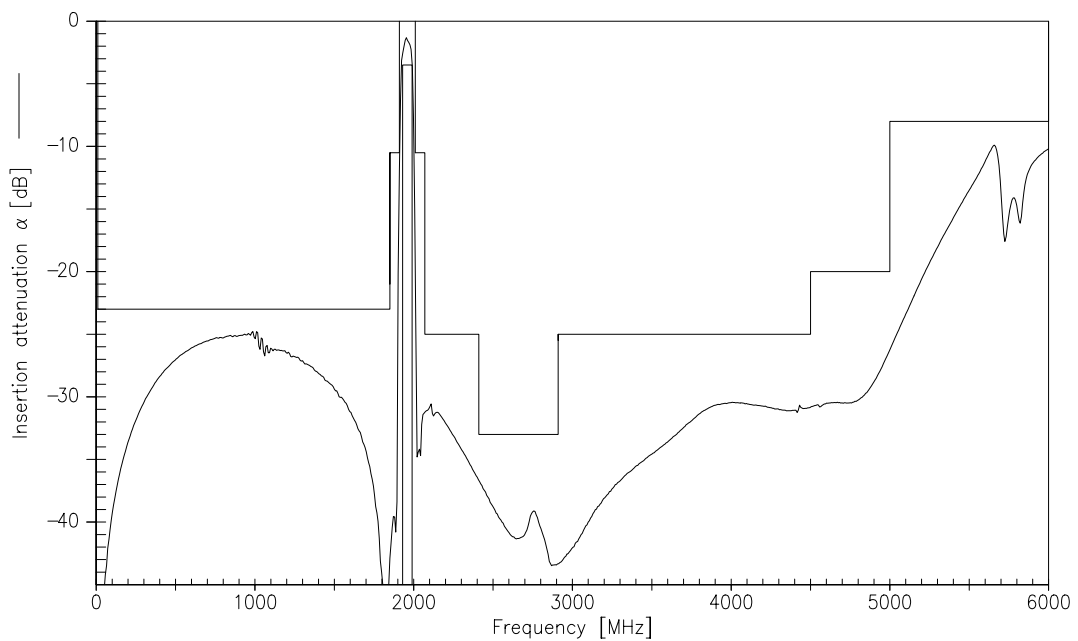
			min.	typ.	max.	
Center frequency	f_c		—	1960,0	—	MHz
Maximum insertion attenuation	α_{\max}		—	2,7	4,3	dB
		1930,0 ... 1990,0 MHz				
Amplitude ripple (p-p)	$\Delta\alpha$		—	1,4	3,0	dB
		1930,0 ... 1990,0 MHz				
Input VSWR			—	1,9	2,1	
		1930,0 ... 1990,0 MHz				
Output VSWR			—	1,9	2,1	
		1930,0 ... 1990,0 MHz				
Attenuation	α					
		10,0 ... 1850,0 MHz	23,0	25,0	—	dB
		1850,0 ... 1910,0 MHz	8,5	14,0	—	dB
		2010,0 ... 2070,0 MHz	8,5	15,0	—	dB
		2070,0 ... 2410,0 MHz	25,0	29,0	—	dB
		2410,0 ... 2910,0 MHz	33,0	37,0	—	dB
		2910,0 ... 4500,0 MHz	25,0	29,0	—	dB
		4500,0 ... 5000,0 MHz	20,0	26,0	—	dB
		5000,0 ... 6000,0 MHz	8,0	10,0	—	dB



Transfer function(Spec for 25° C):



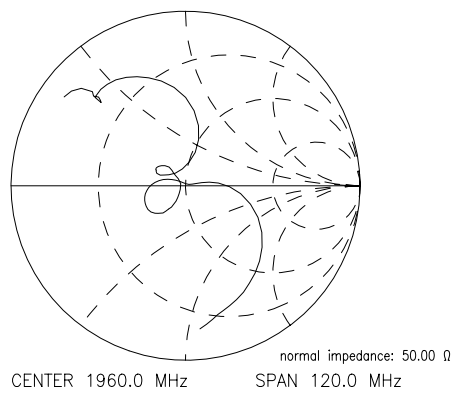
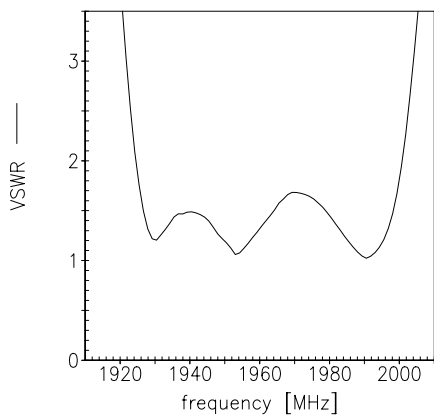
Transfer function(wideband):



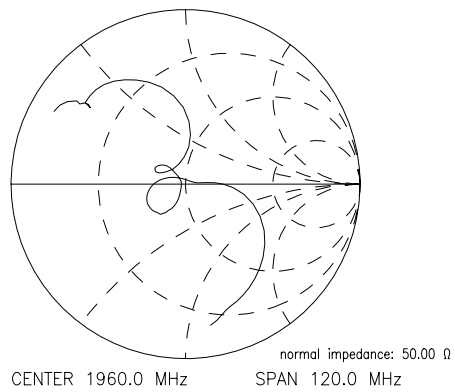
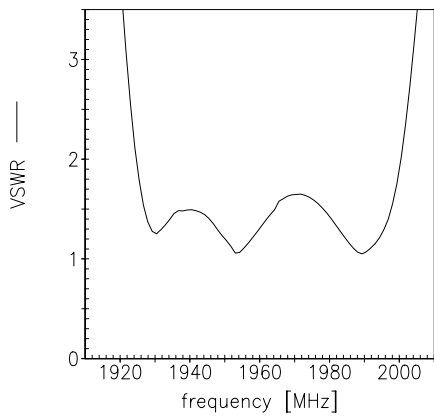


Reflection functions:

S_{11}



S_{22}





SAW Components

B4168

Low-Loss Filter for Mobile Communication

1960,0 MHz

Data Sheet



published by EPCOS AG

Surface Acoustic Wave Components Division, SAW MC WT

P.O. Box 80 17 09, 81617 Munich, GERMANY

© EPCOS AG 2002. Reproduction, publication and dissemination of this brochure and the information contained therein without EPCOS' prior express consent is prohibited.

Purchase orders are subject to the General Conditions for the Supply of Products and Services of the Electrical and Electronics Industry recommended by the ZVEI (German Electrical and Electronic Manufacturers' Association), unless otherwise agreed.

This brochure replaces the previous edition.

For questions on technology, prices and delivery please contact the Sales Offices of EPCOS AG or the international Representatives.

Due to technical requirements components may contain dangerous substances. For information on the type in question please also contact one of our Sales Offices.