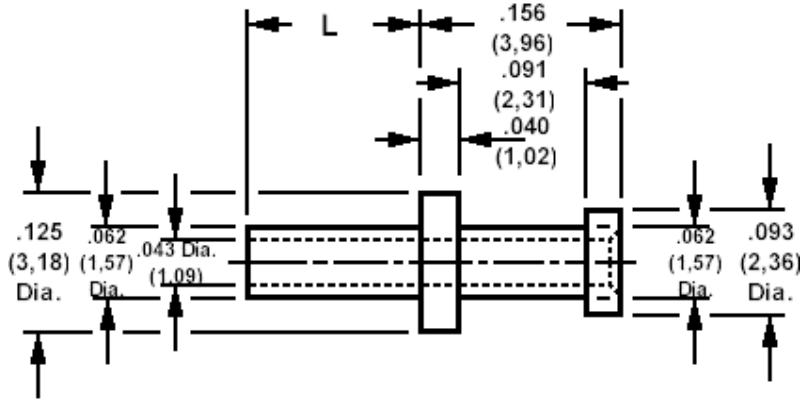


160-1512 Solder terminal, turreted, thru hole

Recommended mounting hole .067 (1,70), #51 drill



How to order code

160-1512-XX-YY-00

Basic Part No XX = L dimension YY = Plating Finish

| DIMENSIONS (XX) | | | |
|-----------------|------|-------------|-----------------|
| Basic Part No | (XX) | L | Board Thickness |
| 160-1512 | -02 | .084 (2,13) | .062 (1,59) |
| | -03 | .115 (2,92) | .094 (2,38) |
| | -04 | .147 (3,73) | .125 (3,18) |

| MATERIALS | | | |
|-----------|----------|-------------|----------------|
| Component | Material | Finish (YY) | |
| | | -01 | -05 |
| Terminal | Brass | Silver | Electro Solder |

| SWAGE TOOLING | |
|-----------------------------|-------------------|
| Recommended Swaging Tools:- | |
| Anvil | 435-6404-01-00-00 |
| Roll punch | 435-6611-01-00-00 |
| Flare Punch | 435-6692-01-00-00 |