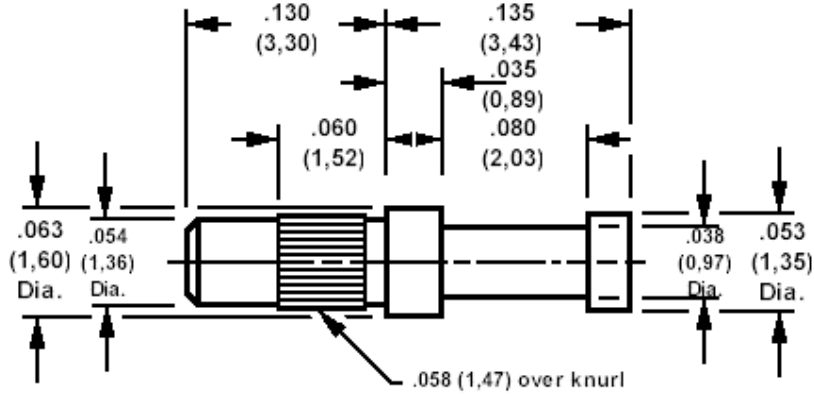


## 160-3747 Solder terminal, turreted, knurled,

Recommended mounting hole .055 (1,40), #54 drill



### How to order code

**160-3747-01-YY-00**

Basic Part No YY = Plating Finish

### MATERIALS

Component	Material	Finish (YY)		
		-01	-04	-05
Terminal	Brass	Silver	Tin	Electro solder

### INSERTION TOOLING

Recommended Insertion Tool:-
435-2985-01-00-00