

Environment-Resistant Type Combined Optical/Electrical Connector



● FSE connector represents the connector having a combined optical and electrical arrangement in the CE01 type (environment resistant) connector which has proven performance in the areas of outdoor communication devices, machine tools, etc. It is available for use in an environment where water, oil, or dust exists around it.

FEATURE

● Locking-with-one-touch system
It has erroneous-engagement prevention mechanism including five positioning keys at the engagement section. Insert the connector, turn the coupling clockwise until a click sounds, which means that secure engagement has been attained.

- Waterresistant (oil-resistant) and dust-resistant design (IP67)
Receptacle has an O ring, so once it is mated with a plug, the mating section prevents perfectly invasion of water drops, cutting oil and dusts. The cable-connection side of plug has a cable clamp with rubber bushing meeting the requirement for waterproofness.
- Combined optical and electric arrangement
Allows combined optical and electrical connection; a combination of eight conductors at the maximum is available

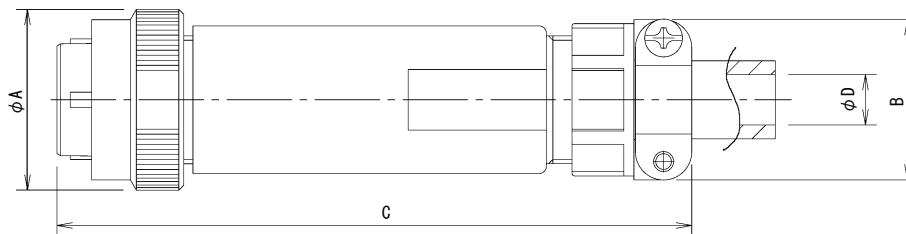
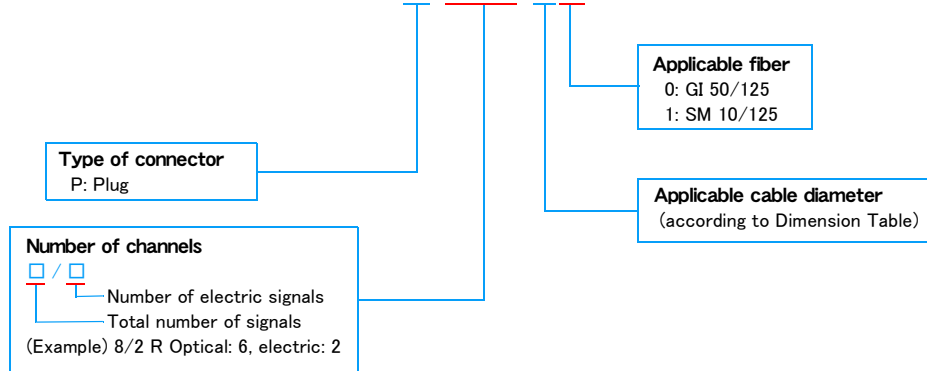


Specifications

Environmental performance	Operational temperature	-25°C to +60°		
	Relative humidity	at unmated	85% or less	
		at mated	100%	
	Water resistance	at mated	IP67	
Mechanical performance	Durability	500 times		
Optical performance	Insert loss	Fiber	SM 10/125	GI 50/125
		PC polishing	0.7dB Max.	0.5dB Max
Electric performance	Size of applicable wire	AGW 16 Max.		
	Withstand voltage	DC1500V		
	Insulation resistance	1,000 M Ω Min.		
	Contact resistance	10MΩ Max.		

■ Plug

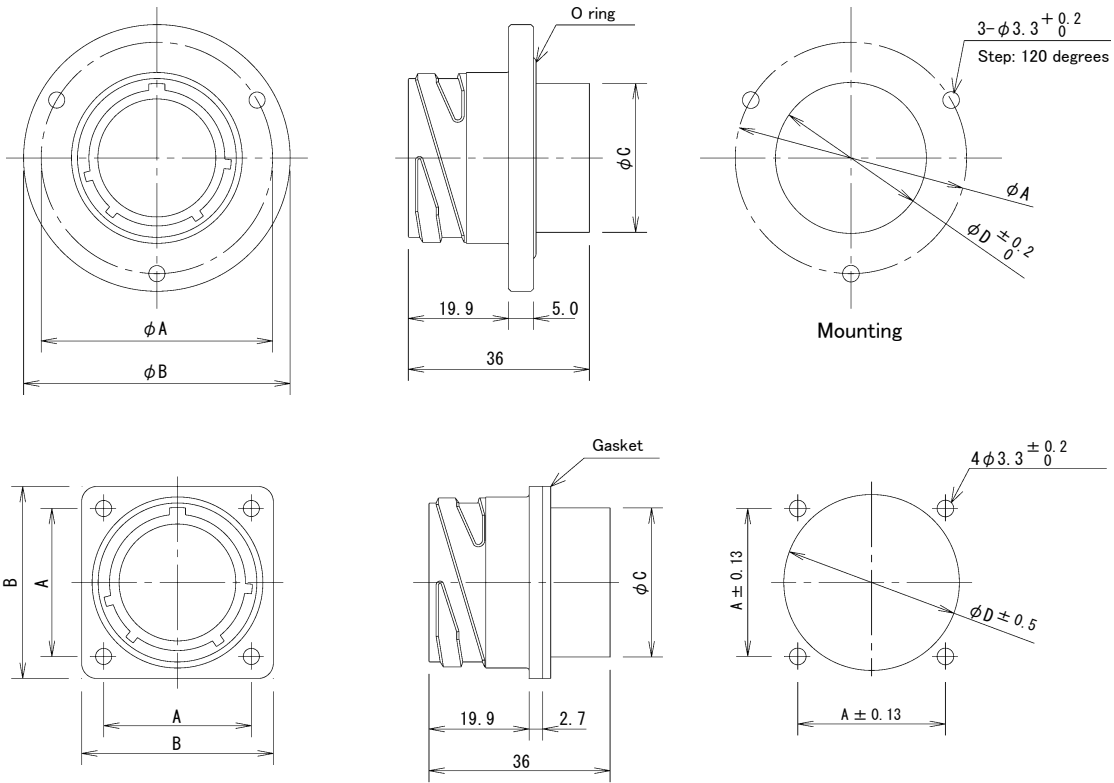
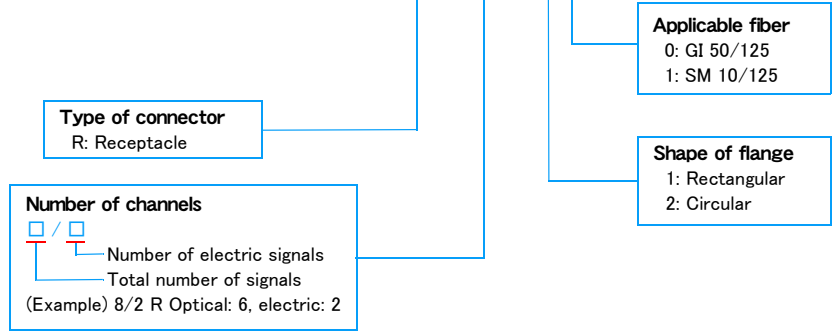
FSE-P-8/2-20-CF



Shell size	Total number of conductors	P/N	A	B	C	D (Inner diameter of bushing)
14	2	FSE-P-2/0-1□A-CF	29.5	29.4	(97)	10.5
18	2	FSE-P-2/0-1□-CF	35.9	31.8	(100)	14.1
		FSE-P-2/0-2□-CF				11.0
		FSE-P-2/0-3□-CF				8.7
	4	FSE-P-4/□-1□-CF				14.1
		FSE-P-4/□-2□-CF				11.0
		FSE-P-4/□-3□-CF				8.7
20	6	FSE-P-6/□-1□-CF	40.6	37.0	(110)	16.0
		FSE-P-6/□-2□-CF				13.0
		FSE-P-6/□-3□-CF				10.0
	8	FSE-P-8/□-1□-CF				16.0
		FSE-P-8/□-2□-CF				13.0
		FSE-P-8/□-3□-CF				10.0

Receptacle

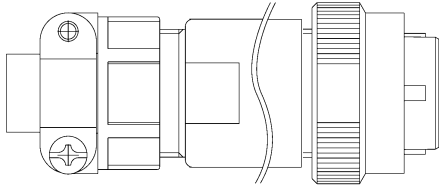
FSE-R-8/2-20-CF



Shell size	Total number of channels	P/N	A	B	C	D	Shape of flange
14	2	FSE-R-2/0-2□A-CF	32.0	38.0	18.5	19.0	Circular
18	2	FSE-R-2/0-1□-CF	26.97	35.0	24.9	25.5	Rectangular
	4	FSE-R-4/□-1□-CF					
20	6	FSE-R-6/□-1□-CF	29.36	38.1	29.6	16.0	
	8	FSE-R-8/□-1□-CF					

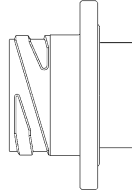
Combination of Connectors

Plug



(2-, 4-, 6-, 8-conductor)

Receptacle

Receptacle with
Recircular flange
(2-, 4-, 6-, 8-conductor)Receptacle with
Recircular flange
(2, 4-conductor only)

G

FSE