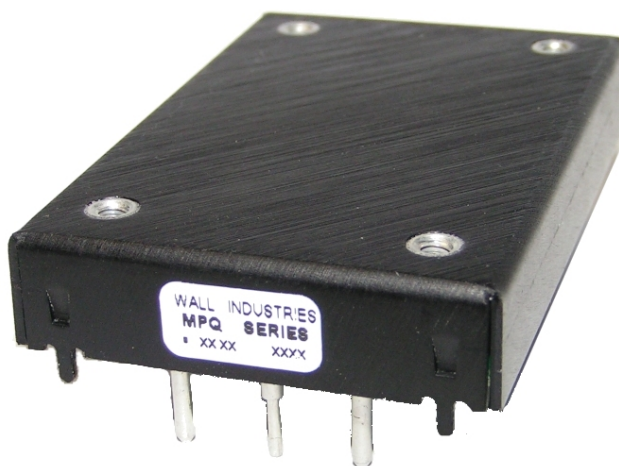


Wall Industries, Inc.

MPQ24S48-50C

50 W DC-DC Converter
10-36 Vdc Input
48 Vdc Output at 1 A
Quarter-Brick Package



Features:

- **Over 87% Efficient at Full Load**
- **Fast Transient Response**
- **Operation to No Load**
- **Output Trim $\pm 10\%$**
- **Remote ON/OFF**
- **Remote Sense Compensation**
- **Low Output Ripple**
- **Fixed Switching Frequency**
- **Output Over Current Protection**
- **Output Short Circuit Protection**
- **Over Temperature Protection**
- **1000 V Isolation**
- **100% Burn In**
- **Heatsink Available**

Description:

The MPQ24 series is a high density, low voltage input quarter brick converter that incorporates the desired features required in today's demanding applications while maintaining low cost. When performance, reliability, and low cost are needed, the MPQ series delivers.

| Technical Specifications | | Model No. MPQ24S48-50C | | | |
|--|---|------------------------|-----------|-----------------|---------------------|
| All specifications are based on 25°C, Nominal Input Voltage and Maximum Output Current unless otherwise noted. We reserve the right to change specifications based on technological advances. | | | | | |
| SPECIFICATION | Related condition | Min | Nom | Max | Unit |
| Switching Frequency | | - | 200 | - | kHz |
| INPUT (V_{in}) | | | | | |
| Operating Voltage Range | | 10 | 24 | 36 | Vdc |
| UVLO Turn On at | | 9.8 | 10.0 | 10.3 | Vdc |
| UVLO Turn Off at | | 9.4 | 9.7 | 9.9 | Vdc |
| UVLO Hysteresis | | - | 0.3 | - | Vdc |
| Maximum Input Current (Graph 3) | Low Line | - | 5.5 | - | A |
| No Load Input Current (Graph 5) | No Load | - | 0.063 | - | A |
| Input Current under "Remote Off" (Graph 6) | Active High Unit | - | 3.1 | - | mA |
| Reflected Ripple Current (Photos 1 & 2) | Measured with a 120 µF Alum. Elect. Input Capacitor | - | 164 | - | mA |
| Input Surge Voltage | 100 mS | - | - | 50 | Vdc |
| EFFICIENCY (Graph 1) | | - | 87 | - | % |
| OUTPUT (V_o) | | | | | |
| Voltage Set Point | ±Sense shorted to ±Vout | 47.262- 1.55 | 48.000 | 48.744 +1.55 | Vdc % |
| Voltage Adjustment (Table 2) | Max Output limited to 90W | 43.20 -10% | 48.0 | 52.80 +10% | Vdc |
| Load Regulation (Graph 7) | ±Sense shorted to ±Vout | - | 0.01 | 0.1 | % |
| Line Regulation (Graph 8) | ±Sense shorted to ±Vout | - | 0.01 | 0.1 | % |
| Temperature Drift (Graph 9) | | - | 0.013 | 0.025 | % / °C |
| Remote Sense Compensation | Max Output limited to 50W (as measured at the converter output pins) | - | - | 52.80 10% | Vdc % |
| Ripple (Photos 7 & 8) | 20 MHz BW | - | 104 | 250 | mV _{pk-pk} |
| Spikes (Photos 7 & 8) | 20 MHz BW | - | - | 250 | mV _{pk-pk} |
| Current | | 0 | - | 1.0 | A |
| Current Limit | Power Limited-Dependent upon SENSE compensation and TRIM adjustment | 1.3 | 1.6 | 1.9 | A |
| Over Voltage Limit | | 52.8 | 54.0 | 58 | Vdc |
| DYNAMIC RESPONSE | | | | | |
| Load step / Δ V (Photos 9 to 12) | 25% to 100% I _o , di/dt=0.025A/µS | - | 325 | - | mV |
| Recovery Time (Photos 9 to 12) | Recovery to within 1% Nominal Vout | - | 1 | - | ms |
| Turn On Delay (Photo 3) | From Vin (min) to Vout (mom) | - | 15 | - | ms |
| Turn On Overshoot (Photos 3 & 5) | Full Load Resistive | - | 0.0 | - | % |
| Hold Up Time (Photo 4) | From Vin (min) to V _{ULVO_Turn_Off} | 0 | - | - | mS |
| REMOTE ON/OFF | | | | | |
| Active High or Active Low (For Active Low add an 'R' to the end of the Part Number) | | | | | |
| Remote ON – Active High | Min High to Enable | 1.5 | - | - | Vdc |
| Remote OFF – Active High | Max Low to Disable | - | - | 0.3 | Vdc |
| Remote ON/OFF pin Floating – Active High | Over Operating Voltage Range | 1.6 | - | 5.2 | Vdc |
| I _{ON/OFF} Sink to pull low – Active High | V _{ON/OFF} =0V, Vin=36 V | - | - | 0.15 | mA |
| Remote ON – Active Low | Max Low to Enable | - | - | 0.8 | Vdc |
| Remote OFF – Active Low | Min High to Disable | 2.1 | - | - | Vdc |
| Remote ON/OFF pin Floating – Active Low | Over Operating Voltage Range | 2.3 | - | 6.2 | Vdc |
| I _{ON/OFF} Sink to pull low – Active Low | V _{ON/OFF} =0V, Vin=36V | - | - | 0.6 | mA |
| I _{ON/OFF} Source to drive high – Active High or Low | | - | 0 | - | mA |
| Turn On Delay – (Photo 5) | Enable (max Low) to Vout (min) | - | 3 | - | ms |
| Turn Off Delay – (Photo 6) | Enable (0V) to Vout (min) | - | - | 100 | µS |
| ISOLATION | | | | | |
| Input-Output | 1 minute | 1000 | - | - | Vdc |
| Input/Output-Chassis | 1 minute | 1000 | - | - | Vdc |
| Isolation Resistance | at 25°C | 20 | - | - | GΩ |
| Isolation Capacitance | | - | 0.01 | - | µF |
| THERMAL | | | | | |
| Ambient (Graph 2) | Max. Ambient limited by Derating Curves (Graph 2) | -40 | 25 | Graph 2 | °C |
| Over Temperature Protection | Case Temperature | - | 110 | - | °C |
| Storage Temperature | | -55 | - | 125 | °C |
| MTBF | Calculated Using Bellcore TR-332 Method 1 case 3 | | 1,250,300 | | hours |
| MECHANICAL | | | | | |
| Weight | | - | 61 | - | g |

Table 1: Pin Assignments

| Pin # | Pin Name | Function | Comments |
|-------|----------|-----------------------|--|
| 1 | +Vin | Positive Input | |
| 2 | Enable | Remote On/Off | If not used, leave open for standard unit, short to -Vin on 'R' units. |
| 3 | -Vin | Negative Input | |
| 4 | +Vout | Negative Output | |
| 5 | +SENSE | Negative Remote Sense | If not used, short to -Vo. |
| 6 | TRIM | Output Voltage Trim | If not used, leave open. |
| 7 | -SENSE | Positive Remote Sense | If not used, short to +Vo. |
| 8 | -Vout | Positive Output | |

Figure 1: Mechanical Dimensions

Unit: inches [mm]

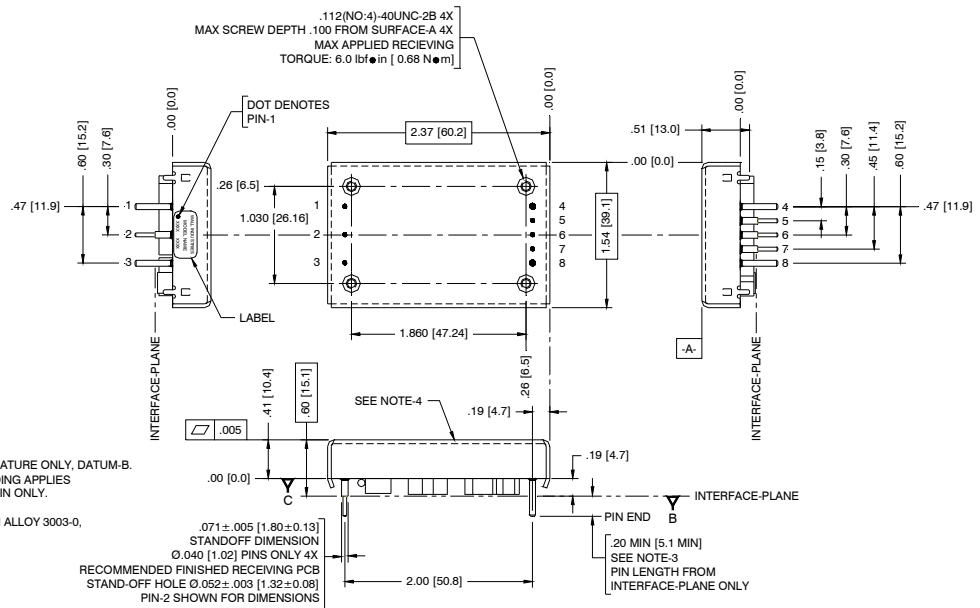
UNLESS OTHERWISE SPECIFIED
ALL DIMENSIONS ARE IN INCHES
(XX) USE IN MILLIMETERS
APPLIED TOLERANCES:
ANGLES = ±1°
XX = ±.02 [0.5] XXX = ±.010 [0.25]
DO NOT SCALE DRAWING
INTERPRET DIMENSION AND TOLERANCE
PER ASME Y14.5M - 1994
THIRD ANGLE PROJECTION



| PIN DESIGNATION | PIN Ø |
|-----------------|--------------|
| 1 +Vin | Ø.062 [1.57] |
| 2 ON/OFF | Ø.040 [1.02] |
| 3 -Vin | Ø.062 [1.57] |
| 4 +Vout | Ø.062 [1.57] |
| 5 +SENSE | Ø.040 [1.02] |
| 6 TRIM | Ø.040 [1.02] |
| 7 -SENSE | Ø.040 [1.02] |
| 8 -Vout | Ø.062 [1.57] |

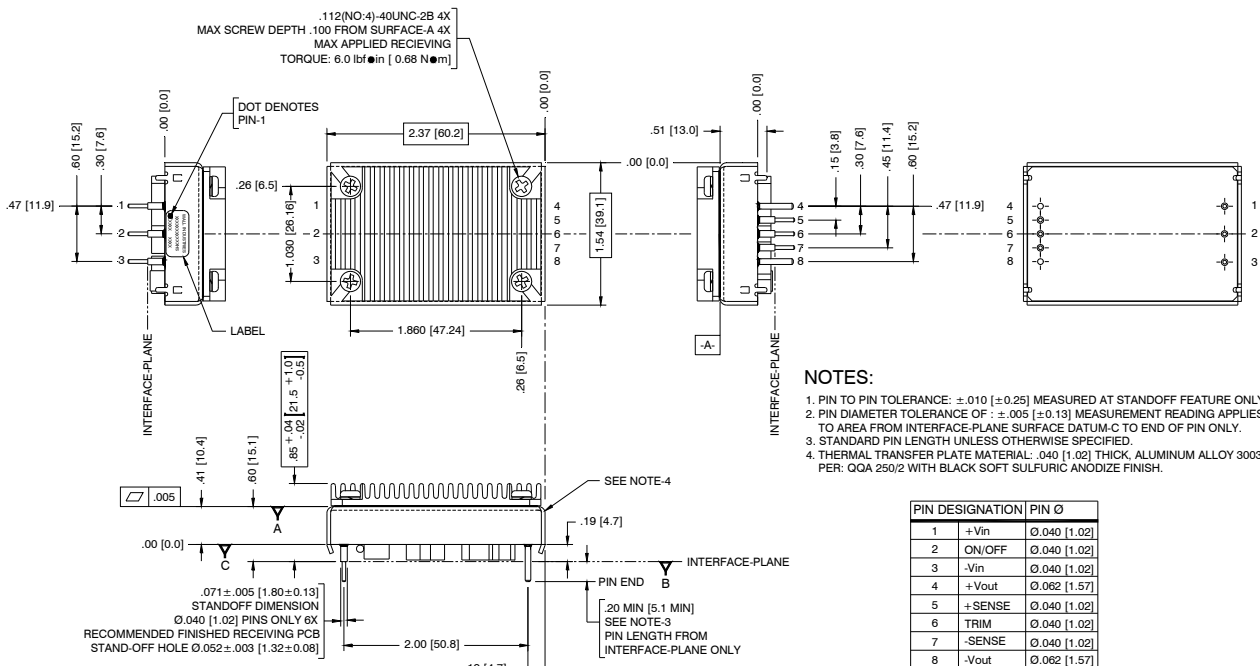
NOTES:

- PIN TO PIN TOLERANCE: ±.010 [±0.25] MEASURED AT STANDOFF FEATURE ONLY, DATUM-B.
- PIN DIAMETER TOLERANCE OF: ±.005 [±0.13] MEASUREMENT READING APPLIES TO AREA FROM INTERFACE-PLANE SURFACE DATUM-C TO END OF PIN ONLY.
- UNLESS OTHERWISE SPECIFIED.
- THERMAL TRANSFER PLATE MATERIAL: .040 [1.02] THICK, ALUMINUM ALLOY 3003-0, PER: QQA 250/2 WITH BLACK SOFT SULFURIC ANODIZE FINISH.



Mechanical Dimensions (Heatsink Option – “HS” suffix)

Unit: inches [mm]



NOTES:

- PIN TO PIN TOLERANCE: ±.010 [±0.25] MEASURED AT STANDOFF FEATURE ONLY, DATUM-B.
- PIN DIAMETER TOLERANCE OF: ±.005 [±0.13] MEASUREMENT READING APPLIES TO AREA FROM INTERFACE-PLANE SURFACE DATUM-C TO END OF PIN ONLY.
- STANDARD PIN LENGTH UNLESS OTHERWISE SPECIFIED.
- THERMAL TRANSFER PLATE MATERIAL: .040 [1.02] THICK, ALUMINUM ALLOY 3003-0, PER: QQA 250/2 WITH BLACK SOFT SULFURIC ANODIZE FINISH.

| PIN DESIGNATION | PIN Ø |
|-----------------|--------------|
| 1 +Vin | Ø.040 [1.02] |
| 2 ON/OFF | Ø.040 [1.02] |
| 3 -Vin | Ø.040 [1.02] |
| 4 +Vout | Ø.062 [1.57] |
| 5 +SENSE | Ø.040 [1.02] |
| 6 TRIM | Ø.040 [1.02] |
| 7 -SENSE | Ø.040 [1.02] |
| 8 -Vout | Ø.062 [1.57] |

DESIGN CONSIDERATIONS

Under Voltage Lock Out (UVLO)

The converter output is disabled until the input voltage exceeds the UVLO turn-on limit. The converter will remain ON until the input voltage falls below the UVLO turn-off limit.

Over Current Protection

The converter is protected from short circuit and over current conditions. Upon sensing an over current, the output will begin to drop (or 'foldback') limiting the output power. Further increasing the output current will cause the converter to shut off and then restart (or 'hiccup') until the overcurrent condition is removed. Shorting the output will cause the converter to immediately enter the 'hiccup' mode.

Over Temperature Protection

The converter is protected from over temperature conditions. Upon exceeding this temperature, the converter will shut down. The converter will automatically recover once the over temperature condition is removed.

Input Filter

No additional input capacitor is needed for the power supply to operate. However, due to the low voltage, high input current nature of the power supply, it is highly recommended that a minimum 100 uF/50 V electrolytic type input bulk capacitor be added to reduce input ripple voltage and current. Refer to Photos 1 and 2 for an example. For an even further reduction of input ripple, an inductor may be placed between the source and the previously mentioned capacitor. Additionally, a 1-10 uF ceramic capacitor may be added in front of the inductor to form pi-filter. No inductor should be placed between the capacitor and the input to the converter.

Output Filter

No additional output capacitor is needed for the power supply to operate. However, to reduce the ripple and noise on the output, additional capacitance may be added. Usually, a ceramic capacitor between 0.1 and 1 uF is recommended for reducing any ringing and spike noise. Also, capacitance in the form of an aluminum electrolytic capacitor may also be placed across the output in order to reduce ripple, and improve the transient peak-to-peak voltage deviation (*see Photos 7 to 11*), but in most cases, is not necessary.

Remote Sense

To improve regulation at the load, route the connections from the -Sense and the +Sense pins to the -Vout and +Vout connections at the load. This will force the converter to regulate the voltage at the load and not at the pins of the converter. If it is not desired to use the Remote Sense feature, the -Sense and +Sense pins should be shorted to the -Vout and +Vout pins respectively. However, no damage to the converter will occur if the Sense pins are left open.

Fusing

It is required that the input to the converter be supplied with a maximum 10 A, 250 V rated fuse UL Listed or R/C fuse.

Safety

The MPQ24 series is designed to meet EN60950 Safety of Information Technology Equipment. The isolation provided by the MPQ24 series is a Basic insulation in accordance with EN60950. SELV output reliability is maintained only if the input to the converter is a SELV source. To maintain SELV reliability, if either +Vin or -Vin is connected to chassis, either +Vout or -Vout must also be connected to chassis. Otherwise, both the input and the output must not be connected to chassis.

PCB Layout Considerations

Due to the Basic isolation provided by the converter, caution must be observed in routing traces more than 2 mm inward of any input or output pins on the top layer of the pcb board underneath the converter. Also, due to noise coupling and isolation requirements, no power or ground planes or any signal traces should be routed on the top layer of the pcb underneath the converter. Due to common noise coupling, input or output power and ground planes should not be poured across the input to output on any layers underneath the converter. Instead, it is best to provide separate input and output power and ground traces on the bottom or an inner layer with a minimum of 1 mm separation between traces on the same layer.

Lastly, as the case/heatsink is floating metal, caution must also be observed to provide appropriate spacing (minimum 1.4 mm for Pollution degree 2 Material Group IIIa + IIIb) around the case/heatsink or risk reducing the input to output spacing and violating Basic insulation requirements.

Remote ON/OFF

This converter has the ability to be remotely turned ON or OFF. The series may be ordered Active-High or Active-Low (place an option 'R' at the end of the part number). Active-High means that a logic high at the ENABLE pin will turn ON the supply (Figure 2). With Active-High, if the ENABLE pin is left floating, the supply will be enabled. Active-Low means that a logic low at the ENABLE pin will turn ON the supply (Figure 3). With Active-Low, if the ENABLE pin is left floating, the supply will be disabled. If remote On/Off is not used on an Active-Low supply, short the Enable pin to $-V_{in}$.

Figure 2: Active High

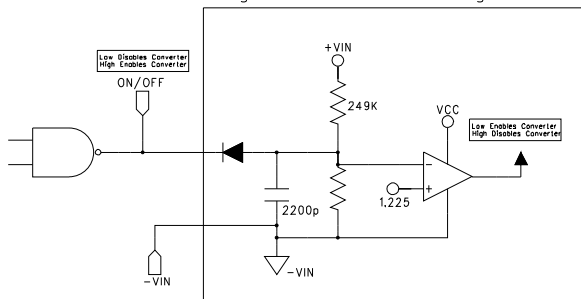
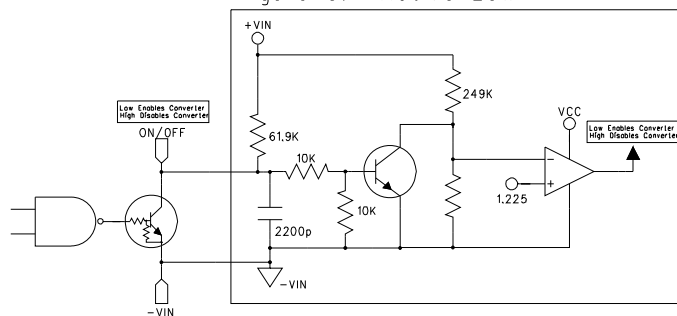


Figure 3: Active Low



Output Voltage Trim

The output is adjustable from $\pm 10\%$ of the output voltage. To adjust the output voltage low, place a resistor between the TRIM and $-$ SENSE pins (Figure 4). To adjust the output voltage high, place a resistor between the $+$ SENSE and TRIM pins (Figure 5). The value of the TRIM resistor with respect to the desired output voltage can be found in Table 2 or derived from the following equations:

$$R_{Trim - Low} = \frac{100}{\Delta\%} - 5.11 \quad (\text{in k}\Omega) \quad R_{Trim - High} = \frac{V_{onom} \cdot (\Delta\% + 100)}{2.5 \cdot \Delta\%} - \frac{100}{\Delta\%} - 5.11 \quad (\text{in k}\Omega)$$

$$\text{where } \Delta\% = \text{Percent Trim} = \left| \frac{V_o^{+/-} - V_{onom}}{V_o^{+/-}} \right| \cdot 100$$

FIGURE 4: TRIM LOW

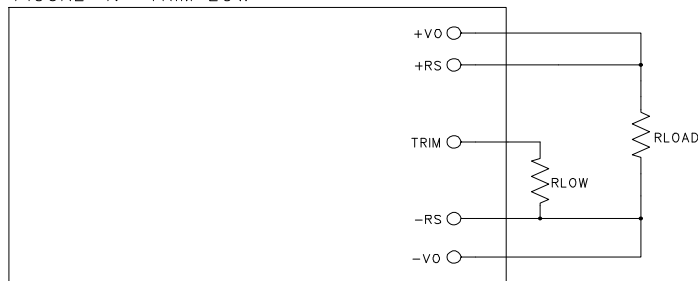
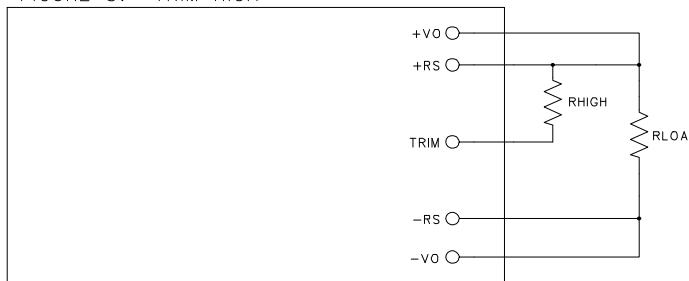


FIGURE 5: TRIM HIGH



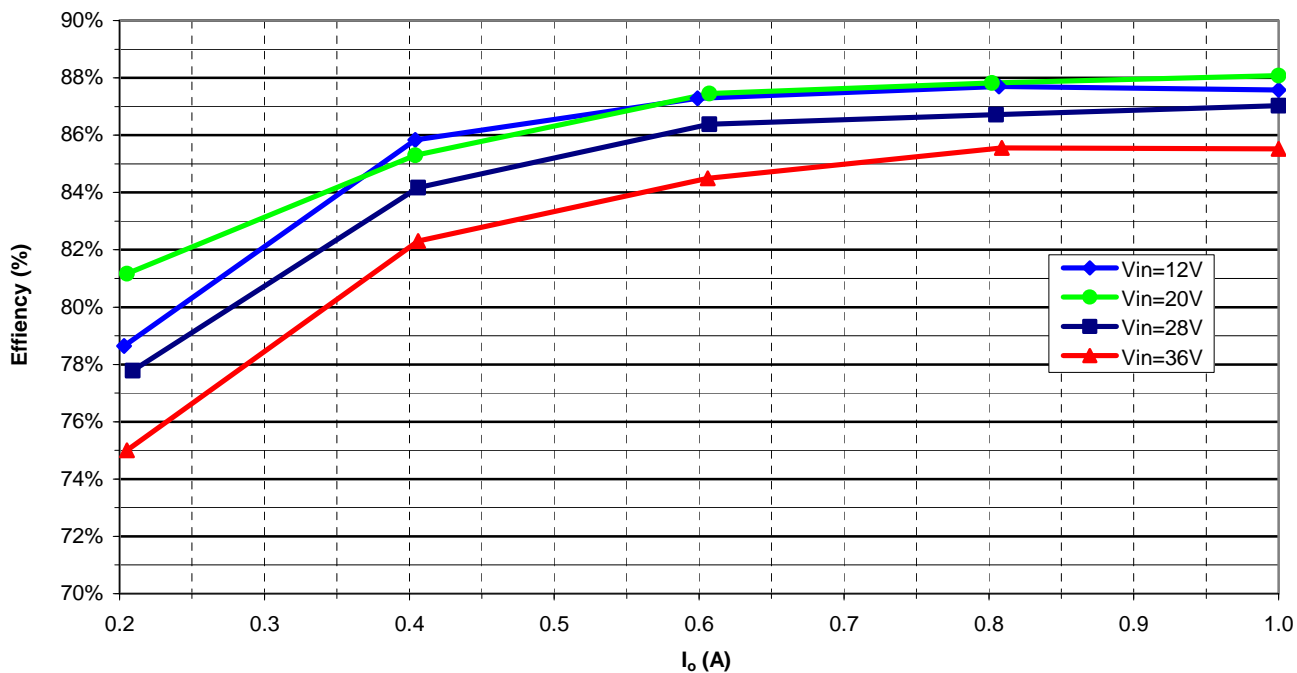
NOTE 1: CONNECT TRIM RESISTOR AS CLOSE TO CONVERTER PINS AS POSSIBLE

Table 2: Trim Resistor Values (in k Ω)

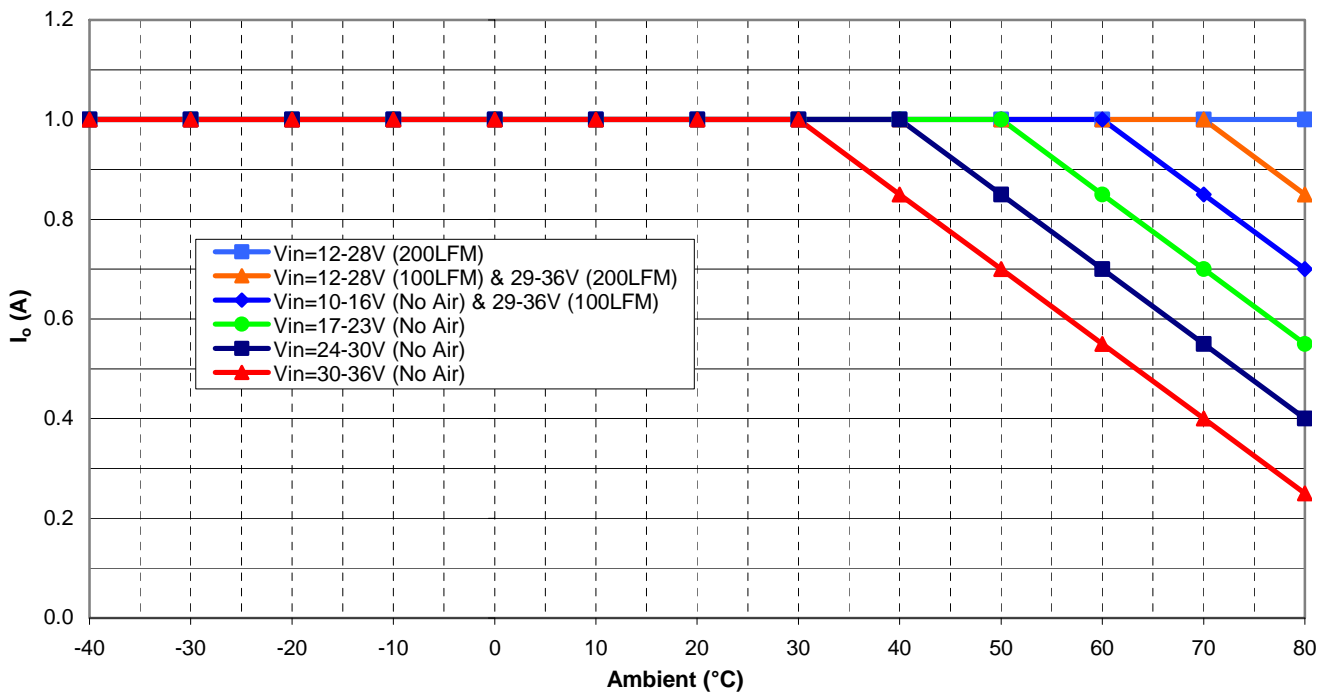
| Percent Trim | TRIM Low | | TRIM High | |
|--------------|----------|------------------|-----------|-------------------|
| | Vout | R _{Low} | Vout | R _{High} |
| 1% | 47.520 | 93.89 | 48.480 | 1833.09 |
| 2% | 47.040 | 43.89 | 48.960 | 923.09 |
| 3% | 46.560 | 27.22 | 49.440 | 619.76 |
| 4% | 46.080 | 18.89 | 49.920 | 468.09 |
| 5% | 45.600 | 13.89 | 50.400 | 377.09 |
| 6% | 45.120 | 10.56 | 50.880 | 316.42 |
| 7% | 44.640 | 8.18 | 51.360 | 273.09 |
| 8% | 44.160 | 6.39 | 51.840 | 240.59 |
| 9% | 43.680 | 5.00 | 52.320 | 215.31 |
| 10% | 43.200 | 3.89 | 52.800 | 195.09 |

Note 2: While decreasing the output voltage, the maximum output current remains the same, and while increasing the output voltage, the output current is reduced to maintain the total output power at 50 W.

Graph 1: MPQ24S48-50C Efficiency vs. Output Current

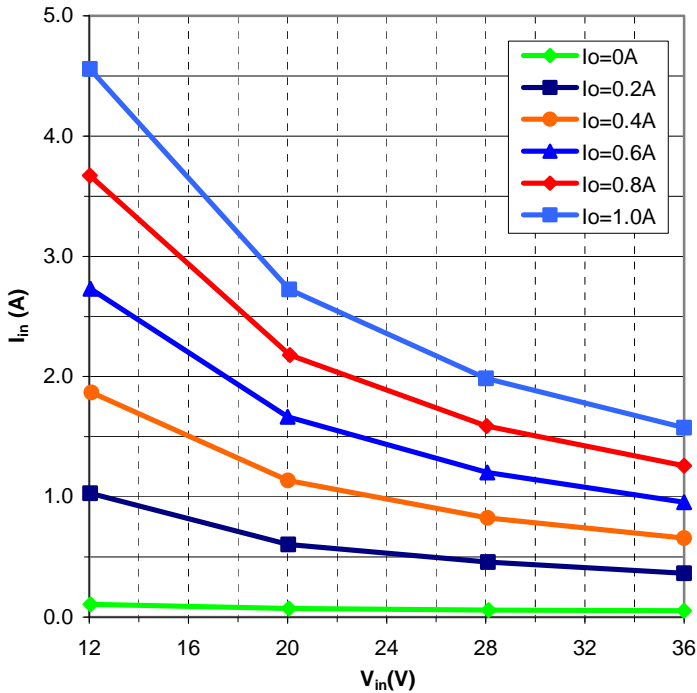


Graph 2: MPQ24S48-50C Max Ambient vs. Io

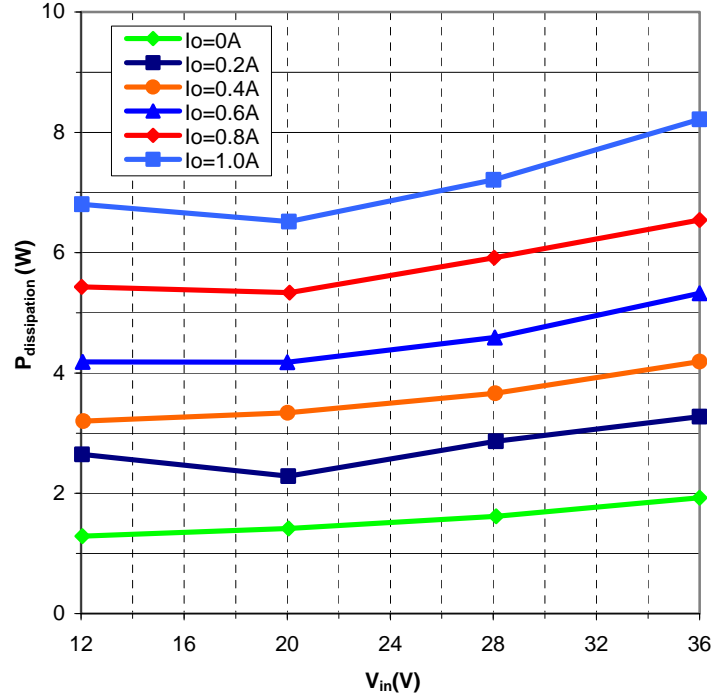


Note 3: When trimming output high, I_o vs. Ambient is derated by power. ie: from Graph 2, find the maximum current at the desired ambient and airflow, and multiply this current by the nominal voltage to get the maximum power. Divide this power by the desired trimmed high voltage to get the maximum current at that ambient. When trimming low, the maximum current stays the same as shown in Graph 2.

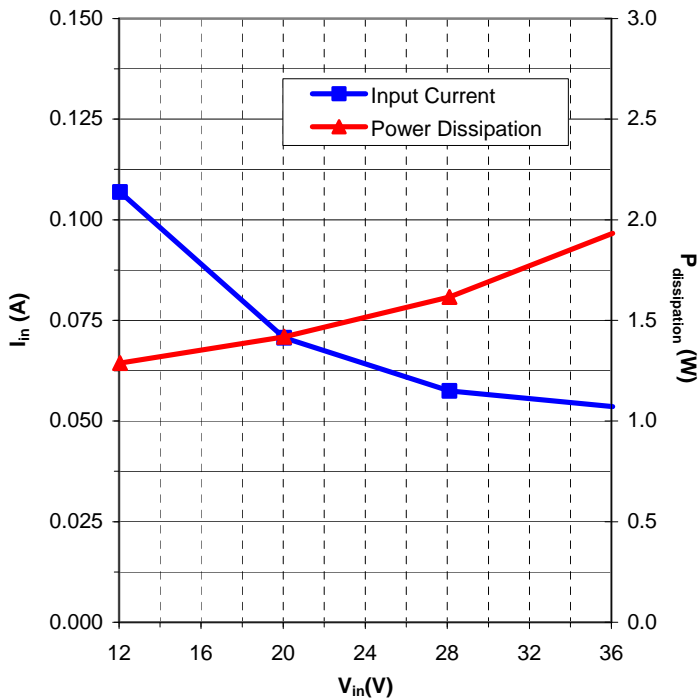
Graph 3: MPQ24S48-50C Input Current vs. Input Voltage



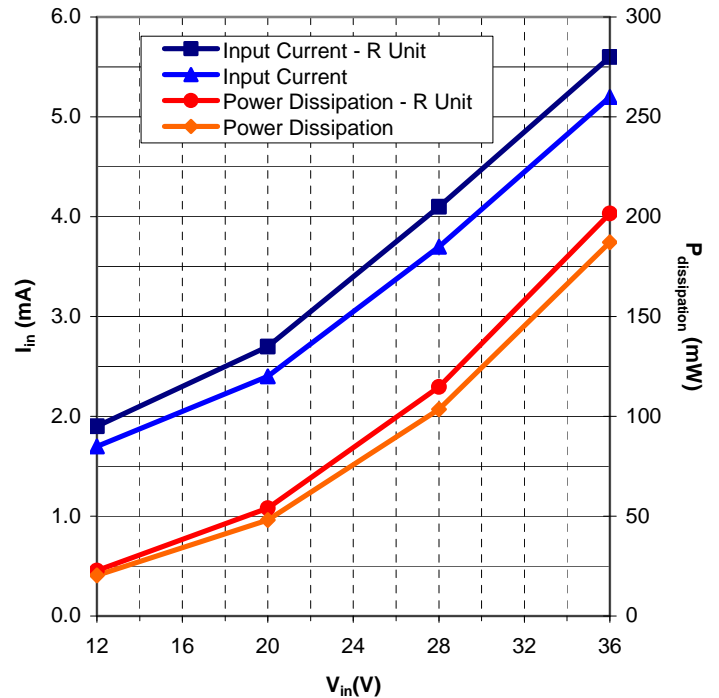
Graph 4: MPQ24S48-50C Power Dissipation vs. Input Voltage



Graph 5: MPQ24S48-50C No Load Input Current and Power Dissipation vs. Input Voltage

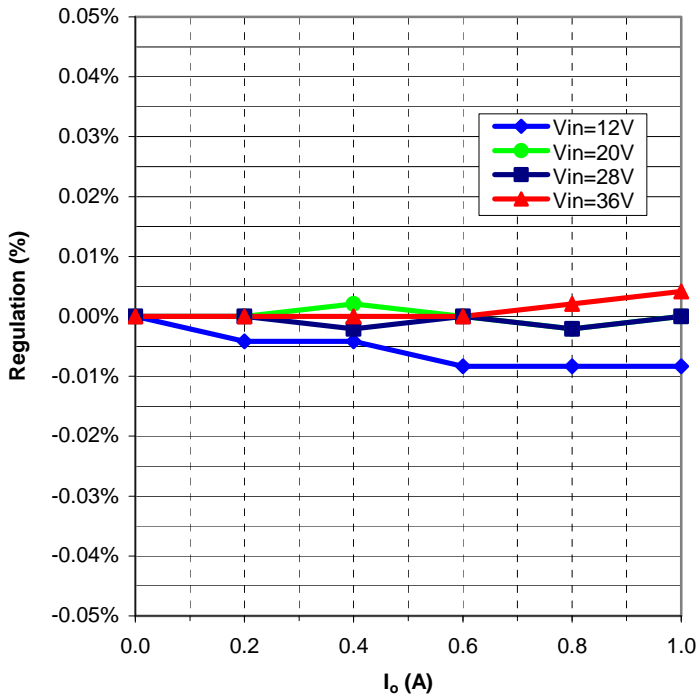


Graph 6: MPQ24S48-50C "Remote Off" Input Current and Power Dissipation vs. Input Voltage

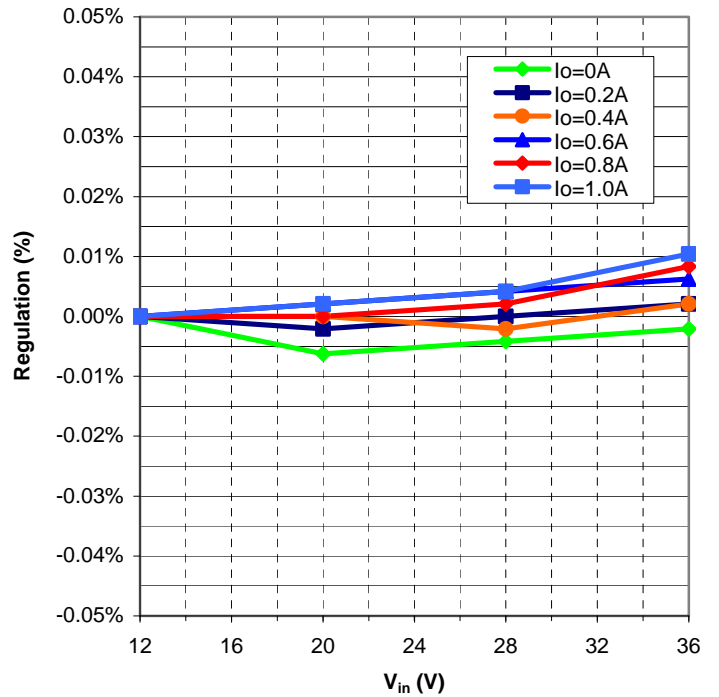


Note 4: Voltage measurements taken where the output pins are soldered into test board.

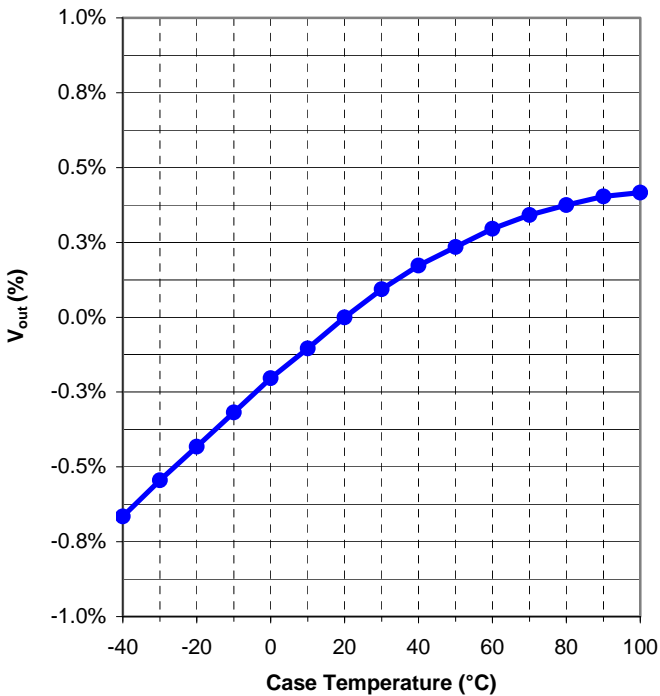
Graph 7: MPQ24S48-50C Load Regulation
(+SENSE to +Vout, -SENSE to -Vout)



Graph 8: MPQ24S48-50C Line Regulation
(+SENSE to +Vout, -SENSE to -Vout)



Graph 9: MPQ24S48-50C Output Temperature Drift
(+SENSE to +Vout, -SENSE to -Vout)



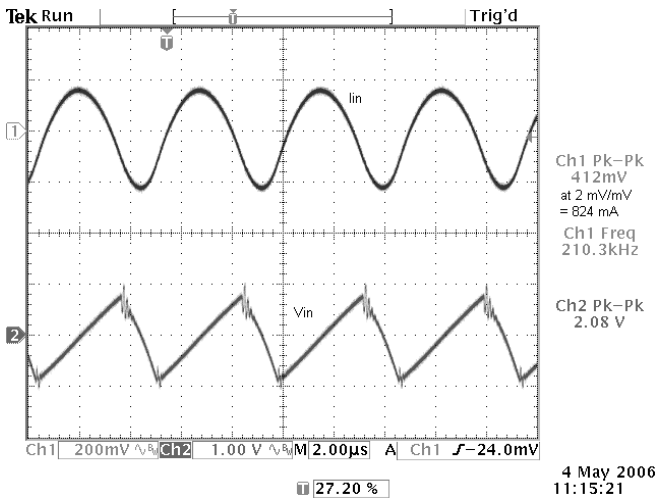


Photo 1: Input Ripple Voltage and Current
Vin=24 V, Iout = 1 A

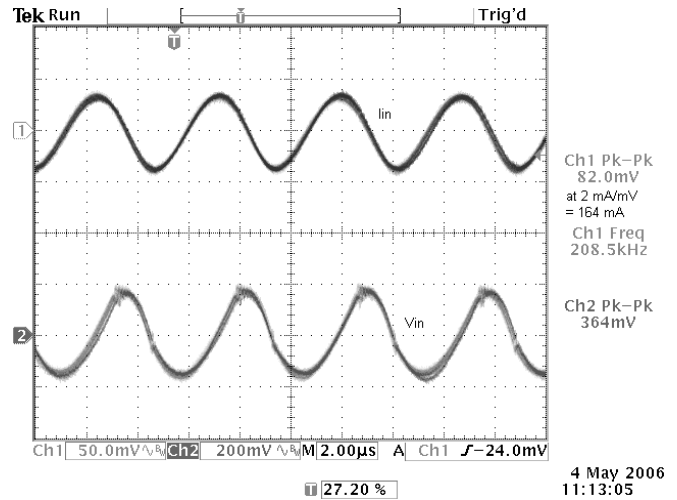


Photo 2: Input Ripple Voltage and Current
Vin=24 V, Iout = 1 A
With a 120 µF Aluminum Electrolytic across the Input

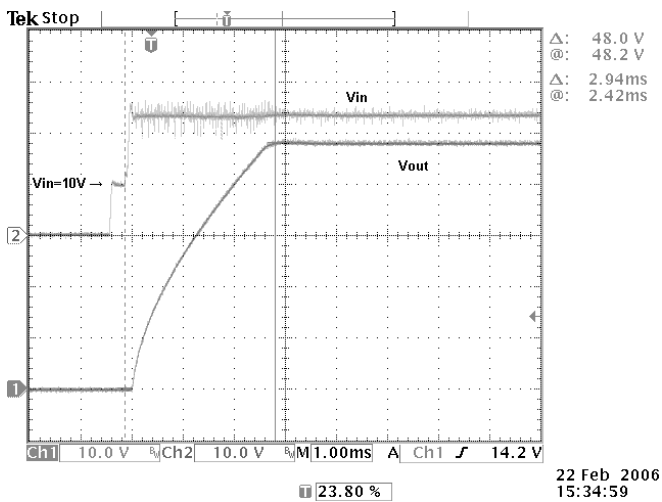


Photo 3: Normal Turn On at 24 V
Cout = 68 µF

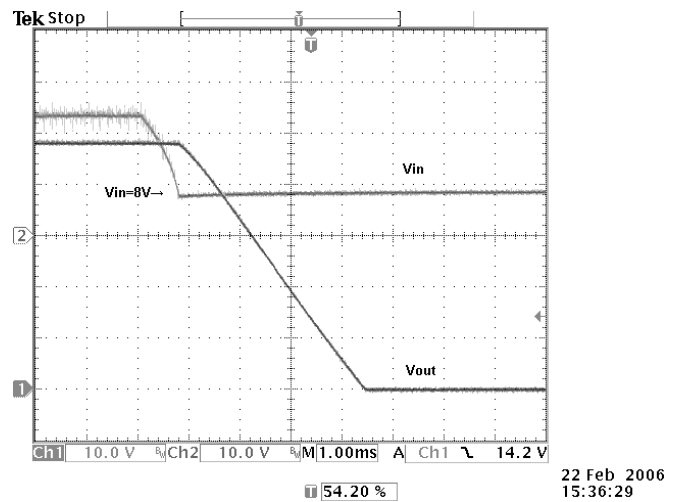


Photo 4: Normal Turn Off at 24 V
Cout = 68 µF

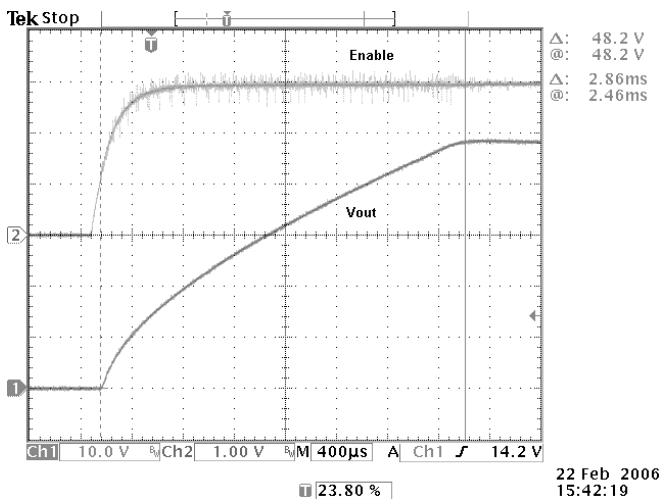


Photo 5: Turn On by Enable at 24 V
Cout = 68 µF

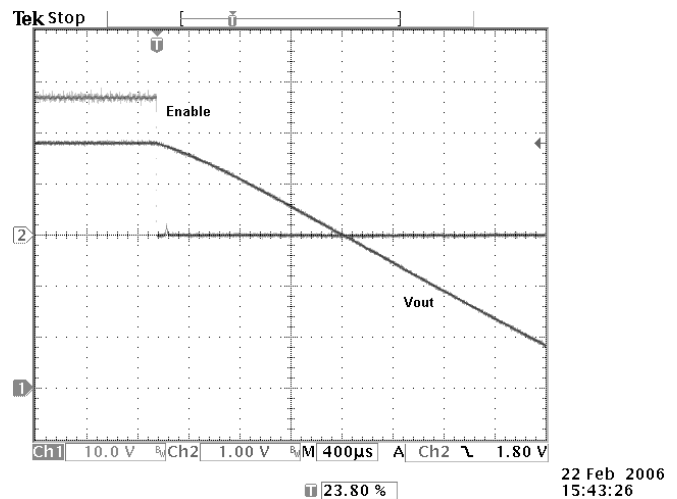


Photo 6: Turn Off by Enable at 24 V
Cout = 68 µF

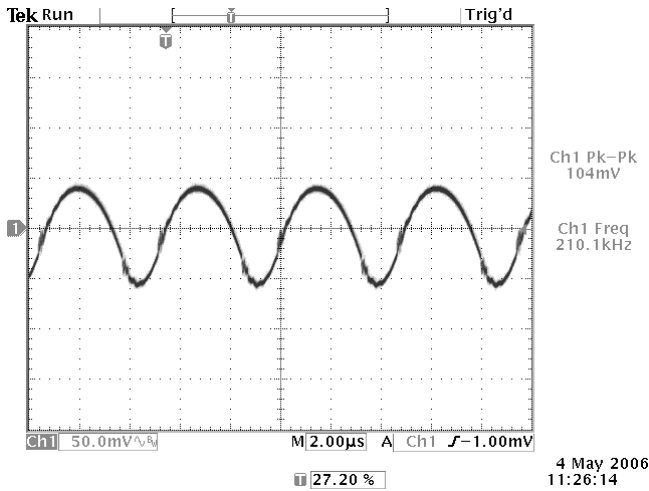


Photo 7: Output Ripple and Noise (20 MHz BW)
Vin=24 V, Iout = 1 A

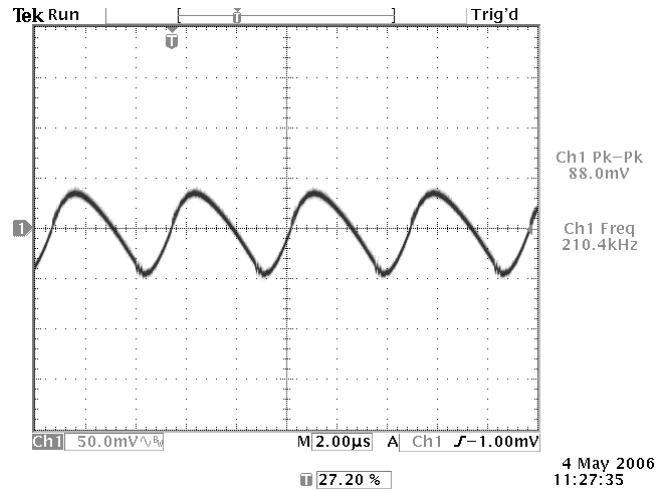


Photo 8: Output Ripple and Noise (20 MHz BW)
Vin=24 V, Iout = 1 A
With a 68 µF Electrolytic across the Output

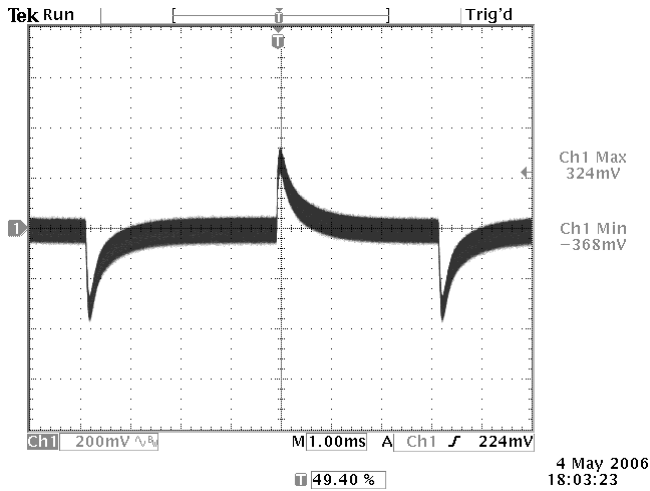


Photo 9: Transient Response – 0.025A/µs
Vin=24 V, Iout = 0.25 to 1 A (25% to 100%)

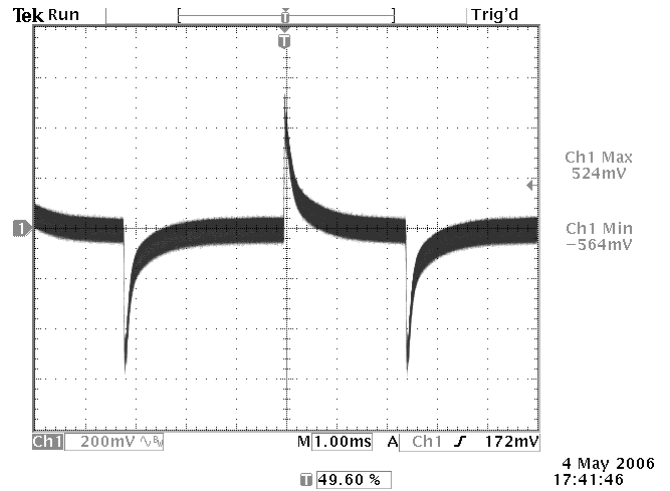


Photo 10: Transient Response – 0.025A/µs
Vin=24 V, Iout = 0.25 to 1 A (25% to 100%)
With a 68 µF Electrolytic across the Output

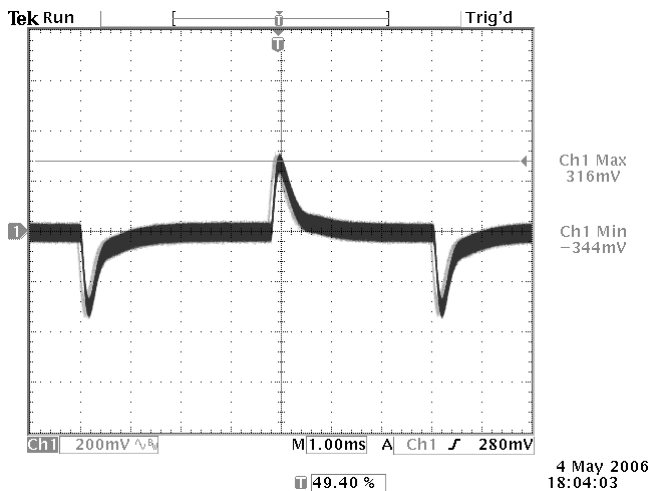


Photo 10: Transient Response – 0.025A/µs
Vin=24 V, Iout = 0.25 to 1 A (25% to 100%)
With a 68 µF Electrolytic across the Output

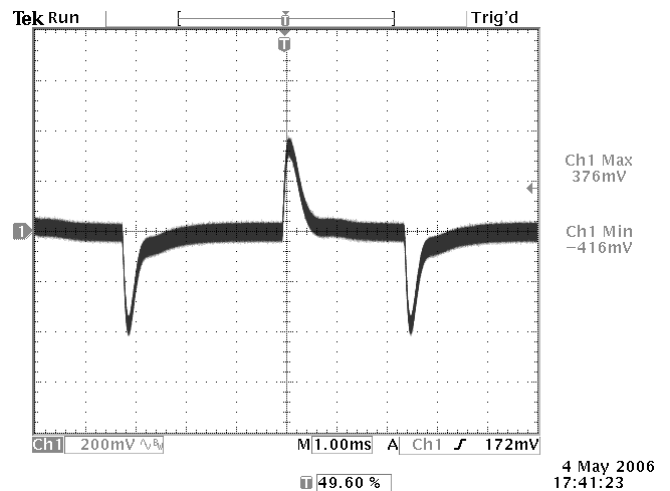
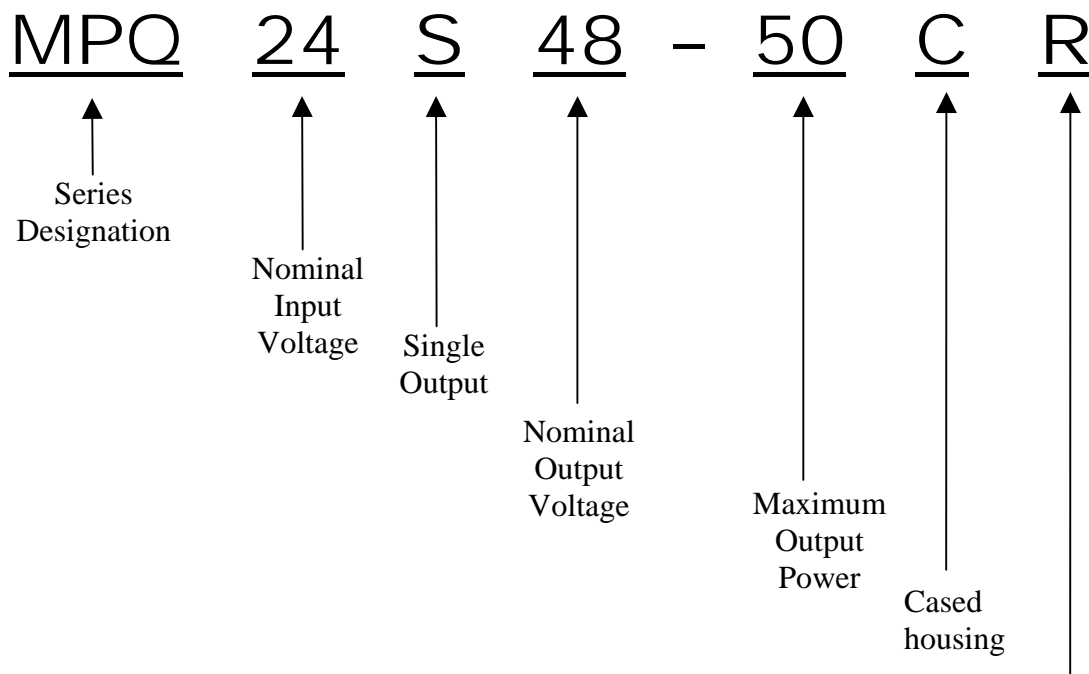


Photo 11: Transient Response – 0.025A/µs
Vin=24 V, Iout = 0.25 to 1 A (25% to 100%)
With a 68 µF Electrolytic across the Output

Ordering Information:

Part Number Example:



| Options | |
|---------|----------------------------|
| | Leave Blank for no Options |
| R | Active Low Enable |
| HS | Heatsink |

Company Information:

Wall Industries, Inc. has created custom and modified units for over 40 years. Our in-house research and development engineers will provide a solution that exceeds your performance requirements on-time and on budget. Our ISO9001-2000 certification is just one example of our commitment to producing a high quality, well documented product for our customers.

Our past projects demonstrate our commitment to you, our customer. Wall Industries, Inc. has a reputation for working closely with its customers to ensure each solution meets or exceeds form, fit and function requirements. We will continue to provide ongoing support for your project above and beyond the design and production phases. Give us a call today to discuss your future projects.

Contact **Wall Industries** for further information:

Phone: ☎ (603)778-2300
Toll Free: ☎ (888)587-9255
Fax: ☎ (603)778-9797
E-mail: sales@wallindustries.com
Web: www.wallindustries.com
Address: 5 Watson Brook Rd.
 Exeter, NH 03833