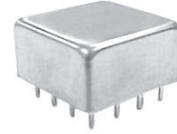


# POWER DIVIDERS

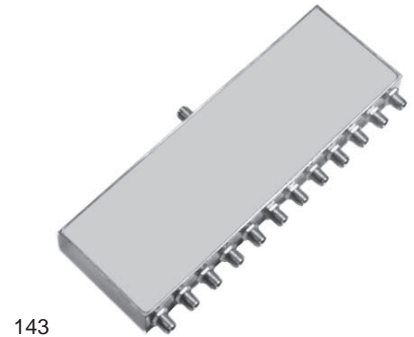
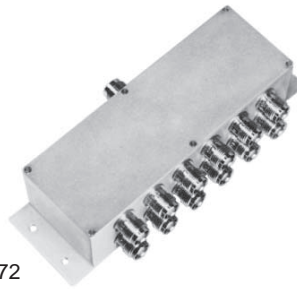
## 0° : 12-WAY



### THROUGH HOLE MOUNT(16 - Pin)

FREQUENCY RANGE (MHz)	ISOLATION (dB)			INSERTION LOSS (dB)			PHASE UNBALANCE (Degrees)			AMPLITUDE UNBALANCE (dB)			PACKAGE	PIN-OUT (See Below)	MODEL
	LB TYP/MIN	MB TYP/MIN	UB TYP/MIN	LB TYP/MAX	MB TYP/MAX	UB TYP/MAX	LB MAX	MB MAX	UB MAX	LB MAX	MB MAX	UB MAX			
2-100	25/20	33/20	34/20	0.4/0.8	0.4/0.8	0.6/1.0	2.0	2.0	3.0	0.4	0.4	0.6	124	1	<b>DLP-901</b>

### COAXIAL CONNECTOR



FREQUENCY RANGE (MHz)	ISOLATION (dB)			INSERTION LOSS (dB)			PHASE UNBALANCE (Degrees)			AMPLITUDE UNBALANCE (dB)			PACKAGE	PIN-OUT (See Below)	MODEL
	LB TYP/MIN	MB TYP/MIN	UB TYP/MIN	LB TYP/MAX	MB TYP/MAX	UB TYP/MAX	LB MAX	MB MAX	UB MAX	LB MAX	MB MAX	UB MAX			
3-250	25/20	32/25	30/23	1.0/1.3	0.9/1.2	1.6/2.0	3.0	6.0	10	0.3	0.4	0.8	143	2	<b>DLK-712S</b>
5-200	25/20	32/25	25/20	0.7/1.2	0.9/1.1	1.2/1.5	4.0	6.0	8.0	0.5	0.6	0.8	172	2	<b>DLK-702B</b>
5-200	25/20	32/23	25/18	0.8/1.3	0.9/1.2	1.2/1.6	4.0	6.0	8.0	0.5	0.6	0.8	172	2	<b>DLK-772B ■</b>
850-1000	---/---	---/---	20/15	---/---	---/---	3.0/4.0	-	-	8.0	-	-	2.0	143	2	<b>DLK-7L4S †</b>

Power Rating (All Models) = 1 Watt, max

■ 75 Ohm Model

† (UB) - Denotes full bandwidth specification

For pin location and package outline drawings, see back pages.

LB = LF to 10 LF
MB = 10 LF to HF/2
UB = HF/2 to HF

PIN-OUT TABLE

	INPUT	OUTPUTS	CASE GROUND
#1	6	1,2,3,4,5,8,9,12,13,14,15,16	7,10,11
#2	1	2,3,4,5,6,7,8,9,10,11,12,13	-