

- Low Cost
- 3 Year Warranty
- Low Cost
- 3 Year Warranty
- Semi F47 Compliant (DLP180&240 only)
- Convection Cooled
- Conducted and Radiated EMI, Class B
- Input Transient Protection, IEC61000-4
- NEC Class 2 Compliant (DLP75&100/C2 models only)

DLP Series

75 to 240W, 24V Output
DIN Rail Mount Power Supply

Key Market Segments & Applications

Industrial Controls: Motor Control Systems
 Factory Automation: Process Control, Automotive, Chemical Processing
 Test & Measurement: Burn in & Test, Instrumentation Measurement

DLP Features and Benefits

Features

- PFC Compliant to EN61000-3-2
- UL508 Approvals
- 3 Year Warranty

Benefits

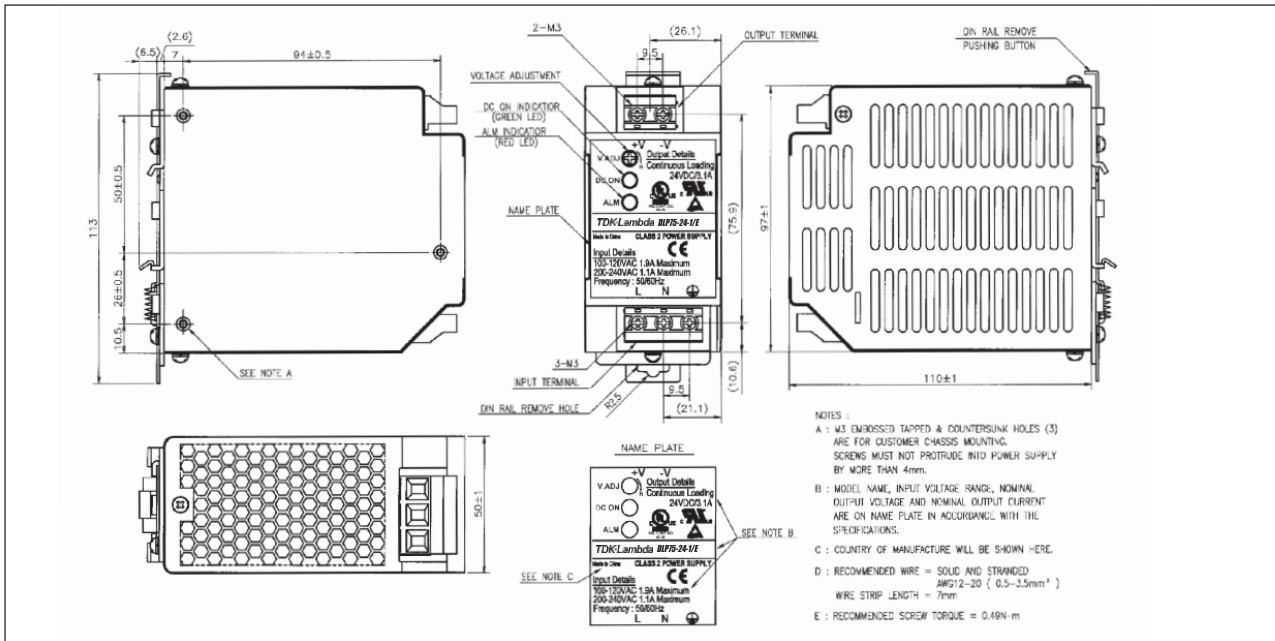
- Supports Global Use
- Enables System Certification
- Fix & Forget

Specifications

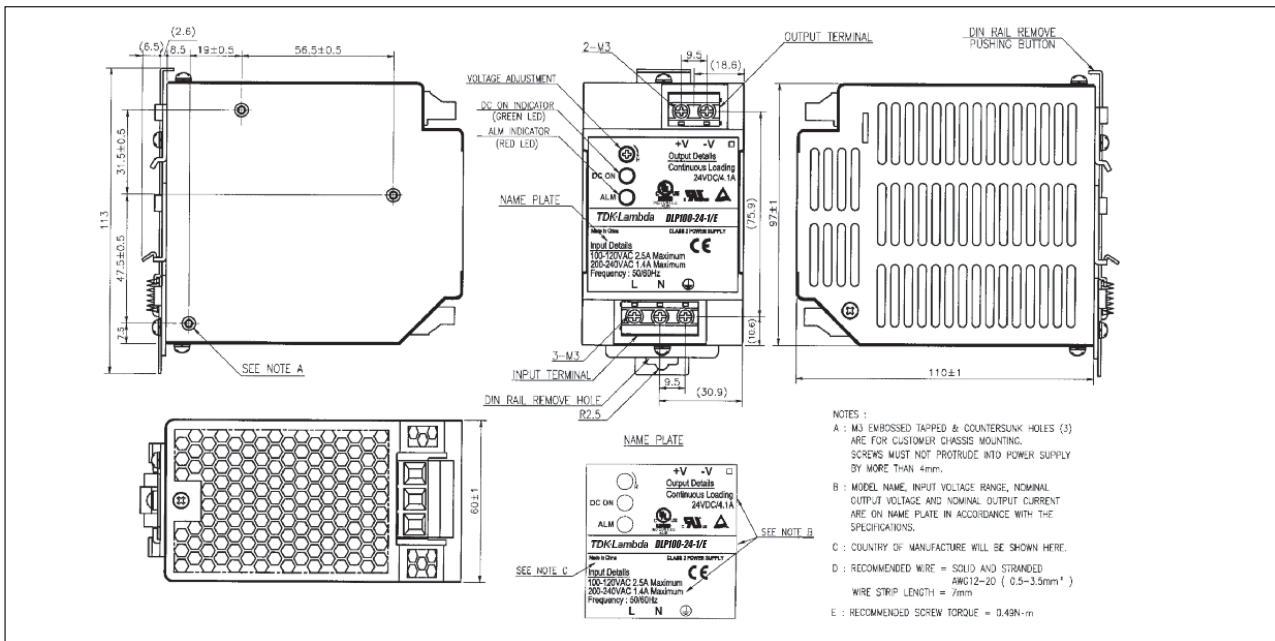
ITEMS	MODELS	DLP75-24-1/E	DLP100-24-1/E	DLP120-24-1/E	DLP180-24-1/E	DLP240-24-1/E
		DLP75-24-1/C2EJ	DLP100-24-1/C2EJ			
Output Voltage	V	24	24	24	24	24
Output Current (/C2 models)	A	3.1 (2.5)	4.1 (3.7)	5.0	7.5	10
Output Power (/C2 models)	W	75 (60)	98.4 (88.8)	120	180	240
Output Voltage Adjustment	V	21.6 - 28 (fixed for /C2 models)				
Load Regulation	mV	192				
Line Regulation	mV	120				
Ripple/Noise (0-60°C)	mV	240				
AC Input Voltage & Frequency	-	85-132/170-265VAC, 47-63Hz Auto select			85-265VAC (47-63Hz) or 120-370VDC ⁽¹⁾	
Input Current 100/230VAC	A	1.7/0.8	2.3/1.2	2.4/1.3	2.3/1.0	3.0/1.3
	/C2	A	1.4/0.7	2.0/1.0	-	-
Efficiency 100/230VAC	%	81/83	82/85	83/85	84/87	82/86
Power Factor	-	Meets EN61000-3-2 (DLP180, 240: >0.95)				
Inrush Current(Typ)100/230VAC	A	20/45				
Leakage Current	mA	Less than 0.75				
Hold-up Time 100/230VAC	ms	20/30 (Semi F47 Compliance, DLP 180 & 240 only)				
Overcurrent Protection	-	>105%,Fold Back		>105%, Constant Current		
	/C2	-	~2.6A	~3.75A	-	
Overvoltage Protection	-	30-35V, latching, cycle AC line to reset (26-30V DLP75-24-1/C2EJ)				
LED Indicators	-	Green LED = DC ok Red LED = overcurrent				
Operating Temperature	(2)	Convection cooled, -10 to 60, derate linearly to 60% load from 50 to 60				
Storage Temperature	°C	-30~+85				
Humidity (Non-Condensing)	%RH	30-90% operating 10-95% non operating				
Withstand Voltage	-	Input - Ground 2kVAC, Input to Output 3kVAC, Output - Ground 500VAC				
Vibration	-	9.8m/s ² (1.0G) at DIN rail; (10-55Hz: 9.8m/s ² Constant, X,Y, Z each 1 hour)				
Shock	-	196m/s ² (20G)				
Safety Agency Approvals	-	UL508, NEC Class 2(3) (/C2 models), UL60950, CSA60950, EN60950, CE, EN50178 Cat III (Pri)				
Conducted EMI	-	FCC-B, EN55011/EN55022-B, VCCI-B; Meets IEC61000-4-1				
Radiated EMI	-	EN55011/EN55022-B, FCC-Class B, VCCI-B				
ESD	-	IEC61000-4-2 ±10kV (Air), ±5kV (Contact)				
Radiated RFI	-	IEC61000-4-3 80-1000MHz, 12V/m 80% AM 1kHz				
Fast Transient Burst	-	IEC61000-4-4 2.4kV 5kHz				
Lightning Surge	-	IEC61000-4-5 4.4kV, 1.2x50µs (Common Mode) 2.4kV 1.2x50µs (Normal)				
Conducted RFI	-	IEC61000-4-6 150kHz-80MHz, 12V, 80% AM 1kHz				
Magnetic Field	-	IEC61000-4-8 36A/m				
Voltage Dips	-	IEC61000-4-11 70% 10ms, 40% 100ms, 0% 5s				
Size	mm	50 x 97 x 110	60 x 97 x 110	60 x 97 x 110	80 x 97 x 110	120 x 97 x 110
Weight	g	470	540	540	780	1000
Warranty	-	3 Years				



Outline Drawing DLP75 Series



Outline Drawing DLP100/120 Series



Also available
DLP-PU
parallel unit
for redundancy

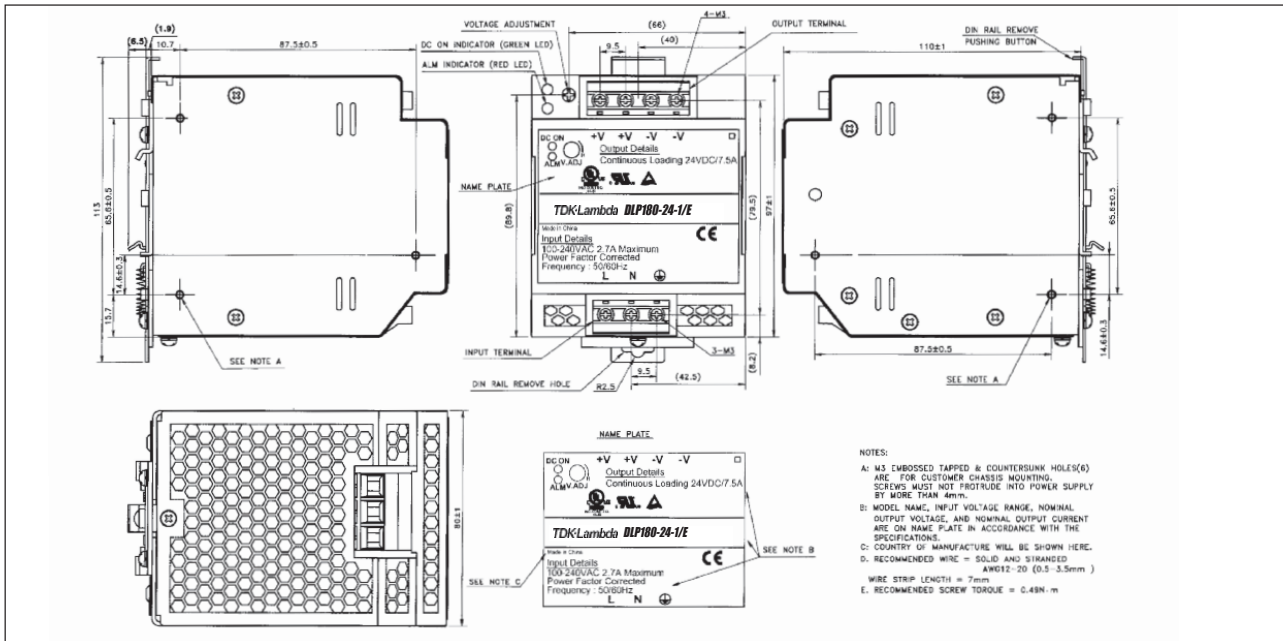
- Notes: (1) DC input is not safety approved
(2) DLP240-24-1/E: 170-265VAC: -10°C~+70°C, derated linearly to 60% load from 50° to 70°C.

DLP75-24-1/C2EJ: -10°C~+70°C, derated linearly to 75% load from 50° to 60°C.
DLP100-24-1/C2EJ: -10°C~+70°C, derated linearly to 80% load from 50° to 60°C.

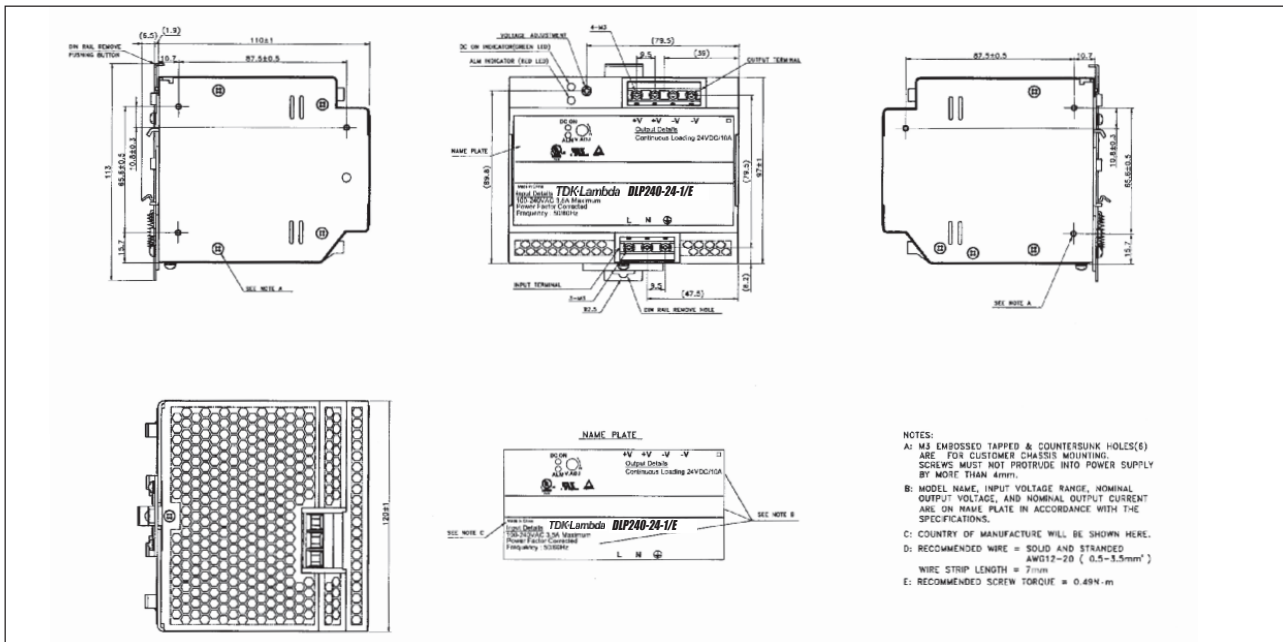
For full data and drawings please visit
www.emea.tdk-lambda.com/www/dlp



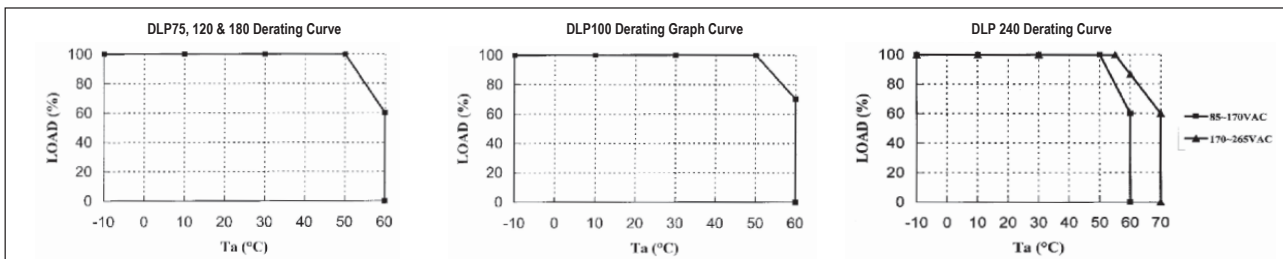
Outline Drawing DLP180 Series



Outline Drawing DLP240 Series



Derating Curve DLP





TDK-LAMBDA EMEA

www.emea-tdk-lambda.com



TDK-Lambda Germany GmbH
 Karl-Bold-Strasse 40
 77855 Achern
 Germany
 Tel: +49 7841 666 0
 Fax: +49 7841 5000
 info.germany@de.tdk-lambda.com
 www.emea.tdk-lambda.com



TDK-Lambda Austria Sales Office
 Aredstrasse 22
 2544 Leobersdorf
 Austria
 Tel: +43 2256 655 84
 Fax: +43 2256 645 12
 info.germany@de.tdk-lambda.com
 www.emea.tdk-lambda.com



TDK-Lambda UK Ltd.
 Kingsley Avenue
 Ilfracombe
 Devon EX34 8ES
 United Kingdom
 Tel: +44 (0) 12 71 85 66 66
 Fax: +44 (0) 12 71 86 48 94
 powersolutions@uk.tdk-lambda.com
 www.uk.tdk-lambda.com



TDK-Lambda France SAS
 ZAC des Delaches
 BP 1077-Gometz-le-Chatel
 91940 LES ULIS
 France
 Tel: +33 1 60 12 71 65
 Fax: +33 1 60 12 71 66
 france@fr.tdk-lambda.com
 www.fr.tdk-lambda.com



TDK-Lambda Italy
 Via dei Laboratori 128/130
 20092 Cinisello Balsamo (MI)
 Italy
 Tel: +39 02 61 29 38 63
 Fax: +39 02 61 29 09 00
 info.italia@it.tdk-lambda.com
 www.it.tdk-lambda.com



TDK-Lambda Corporation
 Nittetsu Bldg 6F
 1-13-1 Nihonbashi
 Chuo-ku
 Tokyo 103-0027 Japan
 Tel: +81 3 5201 7175
 Fax: +81 3 5201 7287
 www.tdk-lambda.com



Nemic Lambda Ltd.
 Kibbutz Givat
 Hashlosha 48800
 Israel
 Tel: +9 723 902 4333
 Fax: +9 723 902 4777
 info@nemic.co.il
 www.nemic.co.il



TDK-Lambda Americas Inc.
 Low Power
 3055 Del Sol Blvd
 San Diego CA 92154
 USA
 Tel: +1 800-LAMBDA-4 or 1-800-526-2324
 Tel: +1 619-575-4400
 Fax: +1 619-429-1011
 www.us.tdk-lambda.com/lp/

 High Power
 405 Essex Road Neptune NJ 07753
 USA
 Tel: +1 732 922 9300
 Fax: +1 732 922 1441
 www.us.tdk-lambda.com/hp/

LOCAL DISTRIBUTION

