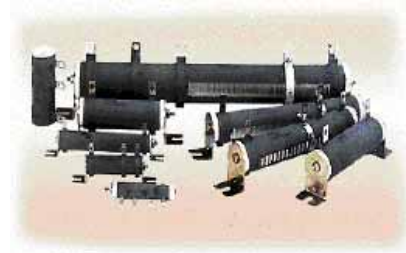




# Power Resistors

## DR Series - Nonflammable Fixed Power Resistors / 绕线功率电阻器

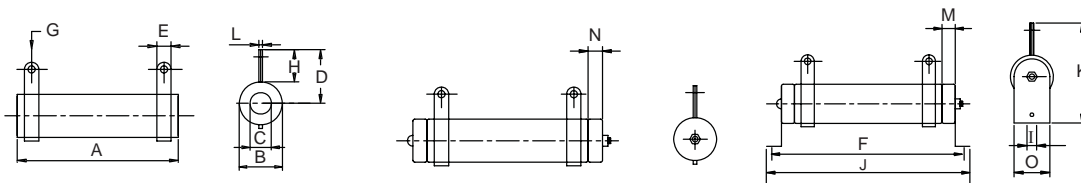
A tubular ceramic has two terminals, and is wound with copper wire or chromium alloy wire to provide the resistance and then coated with a high temperature, non-flammable resin. After the semi-finished part is cool and dry, insulation is applied through a high-temperature process and the mounts are attached. Since the winding is excellent, many taps can be added, impedance is low and the shape can be altered to produce many types.



DR series is suitable for educational modeling applications, load testing, industrial machinery, electric power distribution, instruments, automation control installations, etc. For custom specifications, please contact us to discuss the details.

### ► DDRA Type 10W ~ 1300W

### Tubular Ceramic, Fixed-type



Wattage Rating	Dimensions (mm)															Resistance Range
	A	B	C	D	E	F	G	H	I	J	K	L	M	N	O	
10W	45	12	6	15	4	54	2	9	3	62	28	1.0	-	6	10	1~3KΩ
20W	60	17	8	22	5	78	2	12	4	90	36	1.0	-	6	16	1~7KΩ
30W	80	17	8	22	5	100	2	12	4	112	36	1.0	-	6	16	1~10KΩ
40W	110	17	8	22	5	128	2	12	4	140	36	1.0	-	6	16	1~13KΩ
50W	110	25	16	30	8	150	5	18	6	166	58	1.2	6	-	27	0.1~25KΩ
60W	90	28	18	32	8	130	5	19	6	146	60	1.2	6	-	27	0.1~30KΩ
80W	110	28	18	32	8	150	5	19	6	166	60	1.2	6	-	27	0.1~40KΩ
100W	140	28	18	32	8	180	5	19	6	196	60	1.2	6	-	27	0.1~50KΩ
120W	160	28	18	32	8	200	5	19	6	216	60	1.2	6	-	27	0.1~60KΩ
150W	195	28	18	32	8	235	5	19	6	251	60	1.2	6	-	27	0.3~75KΩ
160W	185	35	24	36	10	225	5	19	8	245	76	1.6	6	-	34	0.3~80KΩ
200W	210	35	24	36	10	250	5	19	8	274	76	1.6	6	-	34	0.3~100KΩ
250W	210	40	25	38	12	250	5	20	8	274	78	1.6	6	-	34	0.5~125KΩ
300W	260	40	25	38	12	300	5	20	8	320	78	1.6	6	-	34	0.5~150KΩ
400W	330	40	25	38	12	370	5	20	8	395	78	1.6	6	-	34	0.5~200KΩ
500W	330	50	35	50	12	380	6	25	9	400	100	1.6	8	-	40	0.5~250KΩ
600W	400	50	35	50	12	450	6	25	9	470	100	1.6	8	-	40	0.8~300KΩ
700W	460	50	35	50	12	510	6	25	9	530	100	1.6	8	-	40	0.8~350KΩ
800W	460	60	40	55	15	515	6	30	10	535	110	1.6	10	-	50	0.8~400KΩ
1000W	540	60	40	55	15	595	6	30	10	615	110	1.6	10	-	50	1~500KΩ
1300W	650	65	42	62	15	702	6	30	10	722	115	1.6	10	-	50	1~750KΩ

Notice: All dimensions might be changed or modified, please refer to last updating specification.

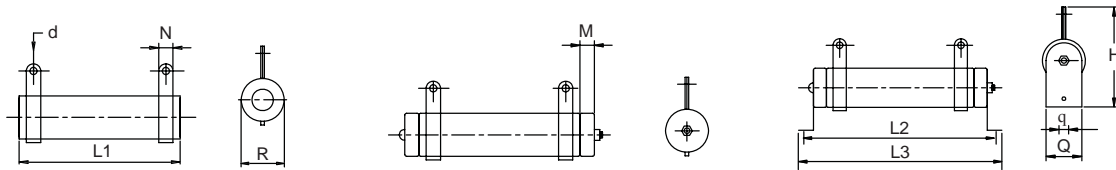




# Power Resistors

## ► DDRB Type 15W ~ 20000W

## Tubular Ceramic, Fixed-type



Wattage Rating	Dimensions (mm)										Resistance Range
	R	L1	L2	L3	H	N	d	M	q	Q	
15W	15	45	65	85	40	6	3.5	3.5	4.5	15	1~1KΩ
20W	15	50	70	90	40	6	3.5	3.5	4.5	15	1~1KΩ
25W	20	50	80	100	50	6	3.5	5	5	20	2~1KΩ
30W	20	70	100	120	50	6	3.5	5	5	20	2~1KΩ
40W	20	87	115	137	50	6	3.5	5	5	20	2~1KΩ
50W	28	90	115	143	68	9	4.5	5.5	6	27	5~1KΩ
80W	28	90	115	143	68	9	4.5	5.5	6	27	5~2KΩ
100W	28	170	195	223	68	9	4.5	5.5	6	27	10~3KΩ
150W	28	215	240	268	68	9	4.5	5.5	6	27	10~3KΩ
200W	28	267	292	320	68	9	4.5	5.5	6	27	10~5KΩ
250W	28	267	292	320	68	9	4.5	5.5	6	27	10~5KΩ
300W	40	267	300	343	90	10	4.5	6	6	39	20~5KΩ
400W	40	330	365	406	90	10	4.5	6	6	39	20~5KΩ
500W	50	330	365	415	98	10	6	8.5	8	49	20~5KΩ
600W	50	330	365	415	98	10	6	8.5	8	49	20~5KΩ
700W	50	400	435	485	95	10	6	8.5	8	49	20~5KΩ
800W	70	300	320	362	138	15	8	-	8	69	40~500Ω
1000W	70	300	320	362	138	15	8	-	8	69	40~500Ω
1500W	70	415	435	477	138	15	8	-	8	69	40~500Ω
2000W	70	510	530	572	138	15	8	-	8	69	40~500Ω
2500W	70	600	620	662	138	15	8	-	8	69	40~500Ω
3000W	70	600	620	662	138	15	8	-	8	69	40~500Ω
4000W	100	430	450	521	185	15	8	-	8	99	40~500Ω
5000W	100	500	620	691	185	15	8	-	8	99	40~500Ω
6000W	100	600	720	791	185	15	8	-	8	99	40~500Ω
10000W	150	600	625	720	350	30	8	-	10	150	40~500Ω
12000W	150	660	685	780	350	30	8	-	10	150	40~500Ω
15000W	150	660	685	780	350	30	8	-	10	150	40~500Ω
20000W	150	1000	1030	1120	350	30	8	-	10	150	40~500Ω

Notice: All dimensions might be changed or modified, please refer to last updating specification.



# Power Resistors

## ► DNRA Type 50W ~ 1300W

## Tubular Ceramic, Low Inductive



Wattage Rating	Dimensions (mm)														Resistance Range
	A	B	C	D	E	F	G	H	I	J	K	L	M	O	
50W	110	25	16	30	8	150	5	18	6	166	58	1.2	6	27	0.1~10KΩ
60W	90	28	18	32	8	130	5	19	6	146	60	1.2	6	27	0.1~12KΩ
80W	110	28	18	32	8	150	5	19	6	166	60	1.2	6	27	0.1~16KΩ
100W	140	28	18	32	8	180	5	19	6	196	60	1.2	6	27	0.1~20KΩ
120W	160	28	18	32	8	200	5	19	6	216	60	1.2	6	27	0.1~24KΩ
150W	195	28	18	32	8	235	5	19	6	251	60	1.2	6	27	0.3~3KΩ
160W	185	35	24	36	10	225	5	19	8	245	76	1.6	6	34	0.3~35KΩ
200W	210	35	24	36	10	250	5	19	8	274	76	1.6	6	34	0.3~40KΩ
250W	210	40	25	38	12	250	5	20	8	274	78	1.6	6	34	0.5~50KΩ
300W	260	40	25	38	12	300	5	20	8	320	78	1.6	6	34	0.5~60KΩ
400W	330	40	25	38	12	370	5	20	8	395	78	1.6	6	34	0.5~80KΩ
500W	330	50	35	50	12	380	6	25	9	400	100	1.6	8	40	0.5~100KΩ
600W	400	50	35	50	12	450	6	25	9	470	100	1.6	8	40	0.8~120KΩ
700W	460	50	35	50	12	510	6	25	9	530	100	1.6	8	40	0.8~140KΩ
800W	460	60	40	55	15	515	6	30	10	535	110	1.6	10	50	0.8~160KΩ
1000W	540	60	40	55	15	595	6	30	10	615	110	1.6	10	50	1~200KΩ
1300W	650	65	42	62	15	702	6	30	10	722	115	1.6	10	50	1~260KΩ

Notice: All dimensions might be changed or modified, please refer to last updating specification.

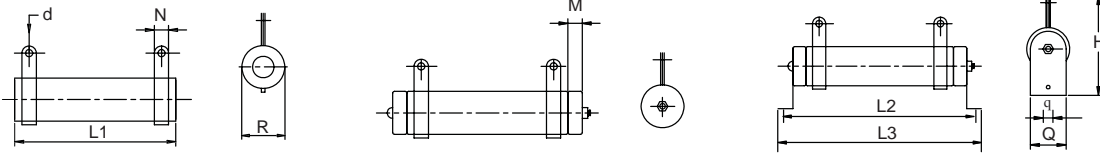




# Power Resistors

► DNRB Type 15W ~ 20000W

Tubular Ceramic, Low Inductive



Wattage Rating	Dimensions (mm)										Resistance Range
	R	L1	L2	L3	H	N	d	M	q	Q	
15W	15	45	65	85	40	6	3.5	3.5	4.5	15	1~1KΩ
20W	15	50	70	90	40	6	3.5	3.5	4.5	15	1~1KΩ
25W	20	50	80	100	50	6	3.5	5	5	20	2~1KΩ
30W	20	70	100	120	50	6	3.5	5	5	20	2~1KΩ
40W	20	87	115	137	50	6	3.5	5	5	20	2~1KΩ
50W	28	90	115	143	68	9	4.5	5.5	6	27	5~1KΩ
80W	28	90	115	143	68	9	4.5	5.5	6	27	5~2KΩ
100W	28	170	195	223	68	9	4.5	5.5	6	27	10~3KΩ
150W	28	215	240	268	68	9	4.5	5.5	6	27	10~3KΩ
200W	28	267	292	320	68	9	4.5	5.5	6	27	10~5KΩ
250W	28	267	292	320	68	9	4.5	5.5	6	27	10~5KΩ
300W	40	267	300	343	90	10	4.5	6	6	39	20~5KΩ
400W	40	330	365	406	90	10	4.5	6	6	39	20~5KΩ
500W	50	330	365	415	98	10	6	8.5	8	49	20~5KΩ
600W	50	330	365	415	98	10	6	8.5	8	49	20~5KΩ
700W	50	400	435	485	95	10	6	8.5	8	49	20~5KΩ
800W	70	300	320	362	138	15	8	-	8	69	40~500Ω
1000W	70	300	320	362	138	15	8	-	8	69	40~500Ω
1500W	70	415	435	477	138	15	8	-	8	69	40~500Ω
2000W	70	510	530	572	138	15	8	-	8	69	40~500Ω
2500W	70	600	620	662	138	15	8	-	8	69	40~500Ω
3000W	70	600	620	662	138	15	8	-	8	69	40~500Ω
4000W	100	430	450	521	185	15	8	-	8	99	40~500Ω
5000W	100	500	620	691	185	15	8	-	8	99	40~500Ω
6000W	100	600	720	791	185	15	8	-	8	99	40~500Ω
10000W	150	600	625	720	350	30	8	-	10	150	40~500Ω
12000W	150	660	685	780	350	30	8	-	10	150	40~500Ω
15000W	150	660	685	780	350	30	8	-	10	150	40~500Ω
20000W	150	1000	1030	1120	350	30	8	-	10	150	40~500Ω

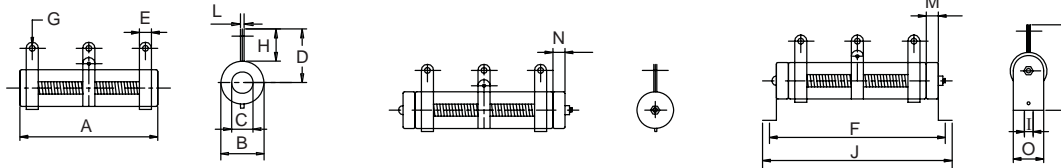
Notice: All dimensions might be changed or modified, please refer to last updating specification.



# Power Resistors

## ► DSRA Type 20W ~ 1300W

## Tubular Ceramic, Variable



Wattage Rating	Dimensions (mm)															Resistance Range
	A	B	C	D	E	F	G	H	I	J	K	L	M	N	O	
20W	60	17	8	22	5	78	2	12	4	90	36	1.0	-	6	16	1~1KΩ
30W	80	17	8	22	5	100	2	12	4	112	36	1.0	-	6	16	1~1.5KΩ
40W	110	17	8	22	5	128	2	12	4	140	36	1.0	-	6	16	1~2KΩ
50W	110	25	16	30	8	150	5	18	6	166	58	1.2	6	-	27	0.1~5KΩ
60W	90	28	18	32	8	130	5	19	6	146	60	1.2	6	-	27	0.1~6KΩ
80W	110	28	18	32	8	150	5	19	6	166	60	1.2	6	-	27	0.1~8KΩ
100W	140	28	18	32	8	180	5	19	6	196	60	1.2	6	-	27	0.1~10KΩ
120W	160	28	18	32	8	200	5	19	6	216	60	1.2	6	-	27	0.1~12KΩ
150W	195	28	18	32	8	235	5	19	6	251	60	1.2	6	-	27	0.3~15KΩ
160W	185	35	24	36	10	225	5	19	8	245	76	1.6	6	-	34	0.3~16KΩ
200W	210	35	24	36	10	250	5	19	8	274	76	1.6	6	-	34	0.3~20KΩ
250W	210	40	25	38	12	250	5	20	8	274	78	1.6	6	-	34	0.5~25KΩ
300W	260	40	25	38	12	300	5	20	8	320	78	1.6	6	-	34	0.5~30KΩ
400W	330	40	25	38	12	370	5	20	8	395	78	1.6	6	-	34	0.5~40KΩ
500W	330	50	35	50	12	380	6	25	9	400	100	1.6	8	-	40	0.5~50KΩ
600W	400	50	35	50	12	450	6	25	9	470	100	1.6	8	-	40	0.8~60KΩ
700W	460	50	35	50	12	510	6	25	9	530	100	1.6	8	-	40	0.8~70KΩ
800W	460	60	40	55	15	515	6	30	10	535	110	1.6	10	-	50	0.8~80KΩ
1000W	540	60	40	55	15	595	6	30	10	615	110	1.6	10	-	50	1~100KΩ
1300W	650	65	42	62	15	702	6	30	10	722	115	1.6	10	-	50	1~130KΩ

Notice: All dimensions might be changed or modified, please refer to last updating specification.

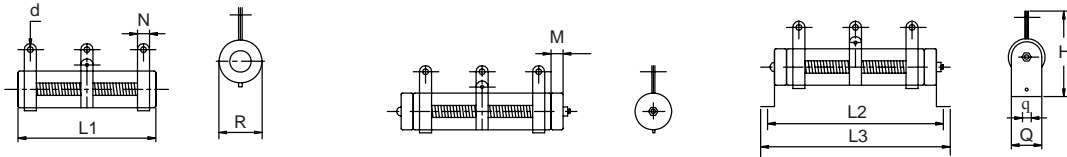




# Power Resistors

## ► DSRB Type 15W ~ 20000W

## Tubular Ceramic, Variable



Wattage Rating	Dimensions (mm)										Resistance Range
	R	L1	L2	L3	H	N	d	M	q	Q	
15W	15	45	65	85	40	6	3.5	3.5	4.5	15	1~1KΩ
20W	15	50	70	90	40	6	3.5	3.5	4.5	15	1~1KΩ
25W	20	50	80	100	50	6	3.5	5	5	20	2~1KΩ
30W	20	70	100	120	50	6	3.5	5	5	20	2~1KΩ
40W	20	87	115	137	50	6	3.5	5	5	20	2~1KΩ
50W	28	90	115	143	68	9	4.5	5.5	6	27	5~1KΩ
80W	28	90	115	143	68	9	4.5	5.5	6	27	5~2KΩ
100W	28	170	195	223	68	9	4.5	5.5	6	27	10~3KΩ
150W	28	215	240	268	68	9	4.5	5.5	6	27	10~3KΩ
200W	28	267	292	320	68	9	4.5	5.5	6	27	10~5KΩ
250W	28	267	292	320	68	9	4.5	5.5	6	27	10~5KΩ
300W	40	267	300	343	90	10	4.5	6	6	39	20~5KΩ
400W	40	330	365	406	90	10	4.5	6	6	39	20~5KΩ
500W	50	330	365	415	98	10	6	8.5	8	49	20~5KΩ
600W	50	330	365	415	98	10	6	8.5	8	49	20~5KΩ
700W	50	400	435	485	95	10	6	8.5	8	49	20~5KΩ
800W	70	300	320	362	138	15	8	-	8	69	40~500Ω
1000W	70	300	320	362	138	15	8	-	8	69	40~500Ω
1500W	70	415	435	477	138	15	8	-	8	69	40~500Ω
2000W	70	510	530	572	138	15	8	-	8	69	40~500Ω
2500W	70	600	620	662	138	15	8	-	8	69	40~500Ω
3000W	70	600	620	662	138	15	8	-	8	69	40~500Ω
4000W	100	430	450	521	185	15	8	-	8	99	40~500Ω
5000W	100	500	620	691	185	15	8	-	8	99	40~500Ω
6000W	100	600	720	791	185	15	8	-	8	99	40~500Ω
10000W	150	600	625	720	350	30	8	-	10	150	40~500Ω
12000W	150	660	685	780	350	30	8	-	10	150	40~500Ω
15000W	150	660	685	780	350	30	8	-	10	150	40~500Ω
20000W	150	1000	1030	1120	350	30	8	-	10	150	40~500Ω

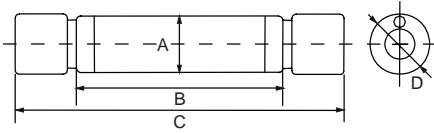
Notice: All dimensions might be changed or modified, please refer to last updating specification.



# Power Resistors

## ► DCR Type 100W ~ 250W

## Tubular Ceramic, C - shaped



Wattage Rating	Dimensions (mm)				Resistance Range
	A	B	C	D	
100W	28	140	165	30	20~20KΩ
120W	28	165	190	30	25~25KΩ
150W	28	195	220	30	30~30KΩ
200W	28	254	279	30	35~35KΩ
250W	28	300	325	30	40~40KΩ

Notice: All dimensions might be changed or modified, please refer to last updating specification.

## ► Performance Specifications

Test Item	Test Methods	Characteristics
Resistance tolerance	JIS-C-5202 5-1	Resistance Nominal Tolerance 1≤R 1>R ±5%(J) ±10%(K)
Temperature coefficient	JIS-C-5202 5-2	±200PPM/°C MAX
Load rating	JIS-C-5202 5-4	ΔR/R≤±(0.5%+0.1Ω) Surface temperature up 350°C MAX
Short-term overload	JIS-C-5202 5-5 1000% rated wattage 5 seconds	Free of appearance or structural irregularity ΔR/R≤±(2%+0.1Ω)
Insulation resistance	JIS-C-5202 5-6 500VDC	100MΩ min
Dielectric withstanding voltage	JIS-C-5202 5-7 1000VDC 1 minute Between terminal and anchor stand	Free of appearance or structural irregularity ΔR/R≤±(0.1%+0.05Ω)
Terminal strength	JIS-C-5202 6-1 8kg 30 seconds	Free of appearance or structural irregularity
Vibration	JIS-C-5202 6-3 1.5m/m 10 ~ 50 ~ 10 Hz/min X-Y-Z 2 hours each	Free of appearance or structural irregularity Surface coating crack ΔR/R≤±(1%+0.05Ω)
Thermal shock	JIS-C-5202 7-3 Room temp 30 minutes ON-55°C 15 minutes OFF	Free of structural irregularity ΔR/R≤±(2%+0.1Ω)
Humidity	JIS-C-5202 7-5 40°C 90%RH 240 hours	Free of appearance or structural irregularity Surface coating crack ΔR/R≤±(3%+0.1Ω)
Load life	JIS-C-5202 7-10 90 minutes ON - 30 minutes OFF 500 hours	Free of appearance or structural irregularity Surface coating crack ΔR/R≤±(1%+0.05Ω)
Flame retardation	JIS-C-5202 7-13-3-2 100% - 600% rated wattage load	US UL-94 flame retardation test V-0 grade noncombustible
REMARKS:	1. Resistance and resistance tolerance were tested in-house with micro resistance meter. 2. Coating refers to UL-certified data provided by supplier.	





# Power Resistors

## ► How to Order

DNRA

①

600W

②

500R

③

J

④

G

⑤

- ① Product type: DDRA type  
 DDRB type  
 DNRA type  
 DNRB type  
 DSRA type  
 DSRB type  
 DCR type

- ② Rated wattage: 10W~1300W  
 15W~20000W  
 50W~1300W  
 15W~20000W  
 20W~1300W  
 15W~20000W  
 100W~250W

- ③ Resistance value( $\Omega$ ) : ( $\Omega$ )  
 indicates resistance  
 value in units of ohms.

### ④ Resistance tolerance

Code	Resistance tolerance
J	$\pm 5\%$
K	$\pm 10\%$

### ⑤ Assembly Method

Code	Assembly Method
C	Clip Mount.
G	Horizontal Mount.
N	No Mount.
Z	Vertical Mount.