

Relay Output Modules

- PLC Overview
- DL05/06 PLC
- DL105 PLC
- DL205 PLC
- DL305 PLC
- DL405 PLC**
- Field I/O
- Software
- C-more HMIs
- Other HMI
- AC Drives
- Motors
- Steppers/Servos
- Motor Controls
- Proximity Sensors
- Photo Sensors
- Limit Switches
- Encoders
- Current Sensors
- Pushbuttons/Lights
- Process
- Relays/Timers
- Comm.
- TB's & Wiring
- Power
- Circuit Protection
- Enclosures
- Appendix
- Part Index

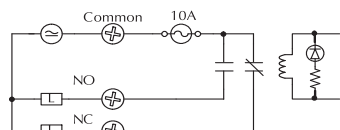
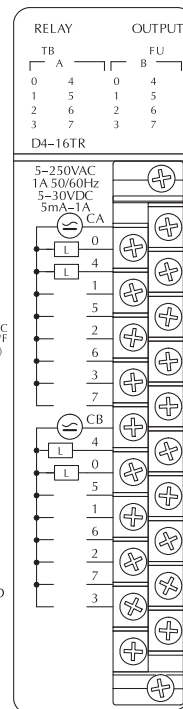
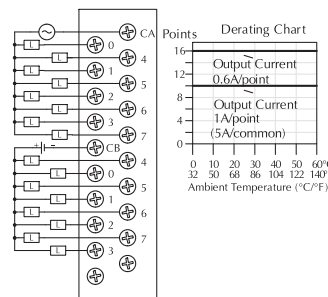
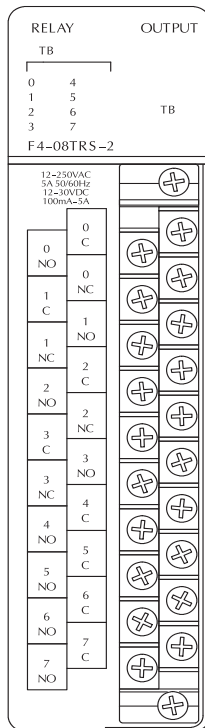
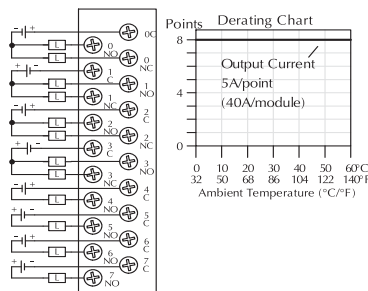
| F4-08TRS-2 Relay Output <---> | |
|---------------------------------|--|
| Outputs per Module | 8 relays |
| Commons per Module | 8 (isolated) |
| Operating Voltage | 12-30VDC-12-250VAC |
| Output Type | 4, Form C (SPDT) 4, Form A (SPST-NO) |
| Peak Voltage | 30VDC/250VAC @ 5A |
| AC Frequency | 47-63Hz |
| ON Voltage Drop | N/A |
| Max Current (Resistive) | 5A/point 40A/module |
| Max Leakage Current | N/A |
| Max Inrush Current | 10A |
| Minimum Load | 100mA @ 12VDC |
| Base Power Required 5V | 575mA max, 60mA/point |
| External DC Required | None |
| OFF to ON Response | 7ms |
| ON to OFF Response | 9ms |
| Terminal Type (included) | Removable (D4-16IOCON) |
| Status Indicators | Logic side |
| Weight | 13.8oz. (390g) |
| Fuses 19379-K- Wickman | 1 (10A 250V) per common User replaceable |
| Replacement Fuse | D4-FUSE-2 <---> |

Maximum DC voltage rating is 120 VDC @ 0.5A @ 30,000 cycles typical. Motor starters up to and including NEMA size 3 can be used with this module.

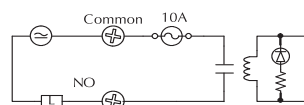
| D4-16TR Relay Output <---> | |
|---------------------------------|-------------------------------------|
| Outputs per Module | 16 relays |
| Commons per Module | 2 (isolated) |
| Operating Voltage | 5-30VDC-5-250VAC |
| Output Type | Form A (SPST-NO) |
| Peak Voltage | 30VDC/250VAC |
| AC Frequency | 47-63Hz |
| ON Voltage Drop | N/A |
| Max Current (Resistive) | 1A/point 5A/common |
| Max Leakage Current | 0.1mA @ 265VAC |
| Max Inrush Current | 4A |
| Minimum Load | 5mA |
| Base Power Required 5V | 1000mA max, 60 mA/point |
| External DC Required | None |
| OFF to ON Response | 10ms |
| ON to OFF Response | 10ms |
| Terminal Type (included) | Removable (D4-16IOCON) |
| Status Indicators | Logic side |
| Weight | 10.9oz. (310g) |
| Fuses | 1 (8A) per common (Non-replaceable) |

| Typical Relay Life (Operations) | | | |
|--|-------------------|---------|---------|
| Maximum Resistive or Inductive Inrush Load Current | Operating Voltage | | |
| | 28 VDC | 120 VAC | 240 VAC |
| 5.0A | 200K | 100K | |
| 3.0A | 325K | 125K | 50K |
| 0.05A | >50M | | |

| Typical Relay Life (Operations) | | | |
|--|-------------------|---------|---------|
| Maximum Resistive or Inductive Inrush Load Current | Operating Voltage | | |
| | 30 VDC | 125 VAC | 250 VAC |
| 1A resistive | >1M | 500K | 300K |
| 1 A inductive | 400K | 200K | 100K |
| 0.5A resistive | >2M | 800K | 500K |
| 0.5A inductive | >1M | 300K | 200K |



Sample Relay Output Circuit (1 of 4)



Sample Relay Output Circuit (1 of 4)

