

Coaxial Frequency Mixer

ZMY-2

Level 23 (LO Power +23 dBm) 10 to 1000 MHz



Maximum Ratings

Operating Temperature	-55°C to 100°C
Storage Temperature	-55°C to 100°C
RF Power	350mW
IF Current	40mA

Coaxial Connections

LO	1
RF	3
IF	2

Features

- low conversion loss, 6.89 dB typ.
- high isolation, 40 dB typ. L-R, 35 dB typ. L-I
- wideband, 10 to 1000 MHz

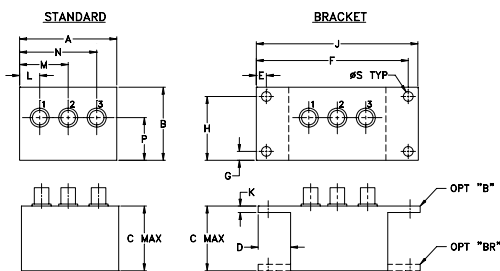
Applications

- VHF/UHF
- cellular
- instrumentation

CASE STYLE: M21

Connectors	Model	Price	Qty.
SMA	ZMY-2	\$84.95	(1-9)
BRACKET (OPTION "B")		\$5.00	(1+)
BRACKET (OPTION "BR")		\$1.50	(1+)

Outline Drawing



Outline Dimensions (inch/mm)

A	B	C	D	E	F	G	H
1.50	1.13	1.00	.50	.155	2.345	.138	.987
38.10	28.70	25.40	12.70	3.94	59.56	3.51	25.07

J	K	L	M	N	P	S	wt
2.50	.10	.31	.75	1.19	.66	.150	grams
63.50	2.54	7.87	19.05	30.23	16.76	3.81	40.0

Electrical Specifications

FREQUENCY (MHz)	CONVERSION LOSS (dB)				LO-RF ISOLATION (dB)						LO-IF ISOLATION (dB)						
	LO/RF	IF	Mid-Band m	Total Range Max.	L		M		U		L		M		U		
f_L - f_U	\bar{X}	σ	Max.	Max.	Typ.	Min.	Typ.	Min.	Typ.	Min.	Typ.	Min.	Typ.	Min.	Typ.	Min.	
10-1000	DC-1000	6.89	0.22	8.5	10.0	50	35	40	30	35	25	50	35	35	25	25	20

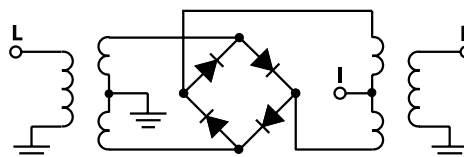
1 dB COMP: +15 dBm typ.

L = low range [f_L to $10 f_L$] M = mid range [$10 f_L$ to $f_U/2$] U = upper range [$f_U/2$ to f_U]
m = mid band [$2 f_L$ to $f_U/2$]

Typical Performance Data

Frequency (MHz)		Conversion Loss (dB)	Isolation L-R (dB)	Isolation L-I (dB)	VSWR RF Port (:1)	VSWR LO Port (:1)
RF	LO	LO +23dBm	LO +23dBm	LO +23dBm	LO +23dBm	LO +23dBm
10.00	40.00	7.24	62.69	65.25	1.1	2.2
39.12	69.12	7.31	59.37	63.70	1.1	1.9
68.24	98.24	7.27	56.74	61.14	1.1	2.2
126.47	96.47	7.14	53.84	56.28	1.2	1.8
184.71	154.71	7.22	48.58	50.62	1.2	1.9
213.83	183.83	7.24	45.40	47.73	1.2	1.8
272.06	242.06	7.23	42.61	45.47	1.2	1.8
330.30	300.30	7.29	41.54	44.13	1.2	2.0
388.53	358.53	7.36	40.25	42.56	1.2	2.2
446.77	416.77	7.64	38.45	40.78	1.2	2.2
505.01	475.01	7.63	36.69	39.32	1.1	2.3
534.12	504.12	7.90	35.83	37.92	1.1	2.3
592.36	562.36	8.08	35.57	36.44	1.2	2.2
650.60	620.60	7.76	36.21	34.53	1.2	2.0
708.83	678.83	7.65	36.58	34.06	1.4	1.8
767.07	737.07	7.45	36.95	33.05	1.6	1.5
825.30	795.30	7.70	36.19	31.58	1.8	1.5
883.54	853.54	8.40	35.85	30.60	2.0	1.6
941.78	911.78	9.21	34.74	29.37	2.2	2.1
1000.00	970.00	9.87	34.25	29.56	2.7	4.9

Electrical Schematic



Mini-Circuits
ISO 9001 ISO 14001 CERTIFIED

ALL NEW
minicircuits.com

P.O. Box 350166, Brooklyn, New York 11235-0003 (718) 934-4500 Fax (718) 332-4661 For detailed performance specs & shopping online see Mini-Circuits web site



The Design Engineers Search Engine Provides ACTUAL Data Instantly From MINI-CIRCUITS At: www.minicircuits.com

RF/IF MICROWAVE COMPONENTS

REV. OR
M92965
ZMY-2
DJ/TD/CP
070315
Page 1 of 2

