

Search

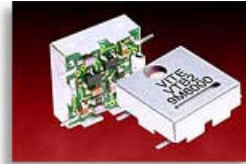
VTB2-XXX Miniature TCXOs

V
E
C
T
R
O
N

I
N
T
E
R
N
A
T
I
O
N
A
L

Featuring

- +3.0 or 5.0 Vdc Option
- Low Cost
- Voltage Tune Option
- Low Profile Surface Mount
- Reflowable

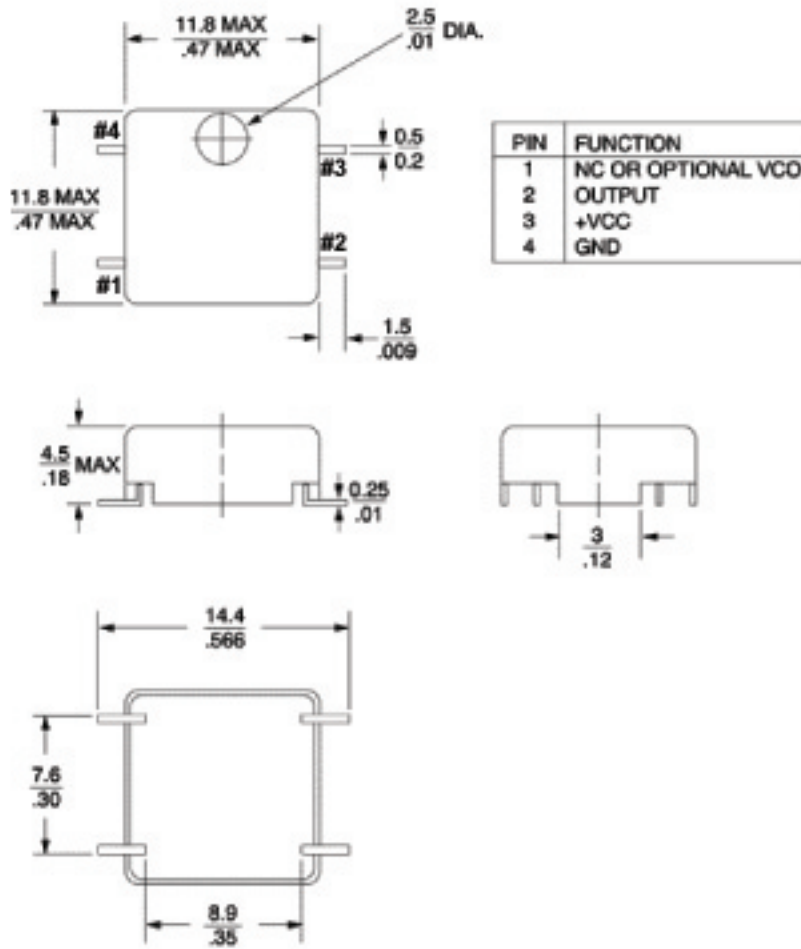


Frequency Range	9.6 to 25 MHz
Stability Options	1 = ±1.0 PPM 0°C to +50°C 2 = ±2.5 PPM -30°C to +70°C 3 = ±3.5 PPM -30°C to +70°C 4 = ±5.0 PPM -40°C to +85°C
Stability vs Supply	<±0.3 PPM vs B+ ±5%
Aging (Typical)	<1.0 PPM/year at +40°C dynamic
Input Voltage & Current	A = +5.0 Vdc ±5% <2 mA B = +3.0 Vdc ±5% <1.5 mA
Output	Clipped Sinewave 1.0 VP-P minimum with 5.0 Vdc input 0.7 VP-P minimum with 3.0 Vdc input
Load	10 K Ω // 10 pf
Mechanical Trim	±3.0 PPM Minimum
Trim Options	0 = Mechanical Trim 1 = ±5.0 PPM minimum Voltage Control & Mechanical Trimmer
Standard Packaging	<1000 pcs boxed >1000 pcs Tape and Reel
Typical P/N	VTB2-2B0 12.8 MHz 2 = ±2.5 PPM B = +3.0 Vdc 0 = Mechanical trim adjust

We welcome your custom requests and will issue a custom part number for items that are not listed.

V
E
C
T
R
O
N

I
N
T
E
R
N
A
T
I
O
N
A
L



For additional information please contact:

USA: Vectron International 166 Glover Avenue, Norwalk, CT 06856-5160
Tel: 1-88-VECTRON-1 Fax: 1-888-FAX-VECTRON Email: vectron@vectron.com

EUROPE: In Denmark, Finland, Ireland, Italy, Israel, Norway, Spain, UK:
Tel: 44(0) 1703 766 288 Fax: 44(0) 1703 766 822
In Austria, Belgium, France, Germany, Luxembourg, Netherlands, Sweden, Switzerland:
Tel: 49(0) 72 63 648 0 Fax: 49(0) 72 63 619 6

ASIA: In China, Taiwan, Japan:
Tel: 1-603-698-0070 Fax: 1-603-698-0075
In Korea, Singapore, Australia, India:
Tel: 1-203-653-4433 Fax: 1-203-649-1423