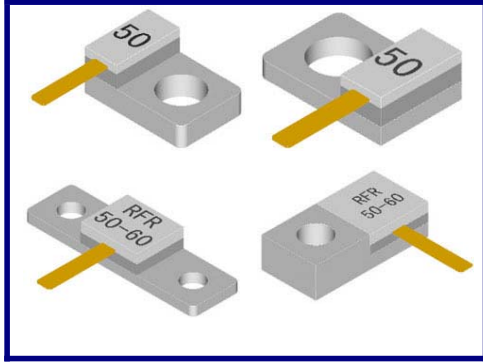


## Terminations

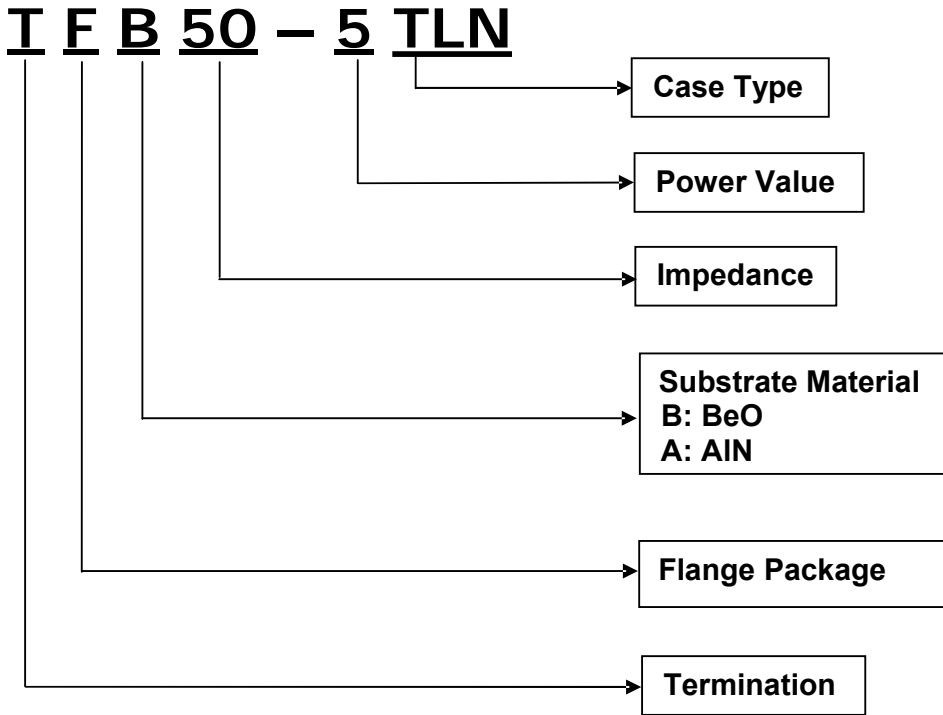
### Flange



- ◆ Resistance\*: 50Ω
- ◆ Substrate Material: BeO, AlN
- ◆ Resistance Tolerance: ±5%
- ◆ Power: 5-800W
- ◆ Frequency Range\*: DC-6GHz
- ◆ Operation Temperature: -55 ~ +150°C
- ◆ Temperature Coefficient: ±150ppm/°C
- ◆ RoHS Compliant
- ◆ \*Custom Designs Available

## Termination – Flange (TFB series)

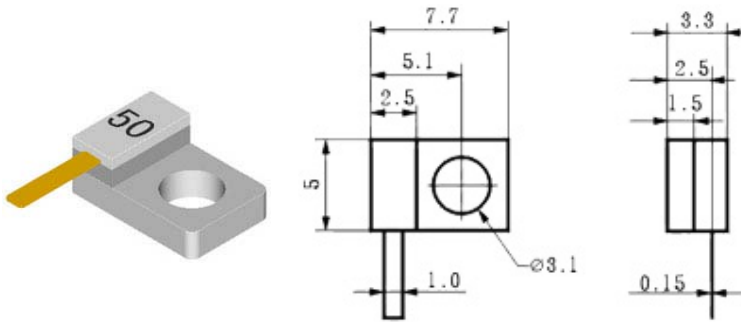
### Explanation to P/N



P/N	Power (W)	Frequency (GHz)	Substrate	Resistance (Ω)	VSWR max	Page
TFB50-5TLN	5	DC-3	BeO	50 ± 5%	1.25:1	3
TFB50-5TRN	5	DC-3	BeO	50 ± 5%	1.25:1	3
TFB50-5TLG	5	DC-6	BeO	50 ± 5%	1.25:1	3
TFB50-5TRG	5	DC-6	BeO	50 ± 5%	1.25:1	4
TFB50-5TLA	5	DC-6	BeO	50 ± 5%	1.30:1	4
TFB50-5TRA	5	DC-6	BeO	50 ± 5%	1.30:1	4
TFB50-5TIA	5	DC-6	BeO	50 ± 5%	1.30:1	5
TFB50-5TBE	5	DC-6	BeO	50 ± 5%	1.30:1	5
TFB50-10TLK	10	DC-6	BeO	50 ± 5%	1.25:1	5
TFB50-10TRK	10	DC-6	BeO	50 ± 5%	1.25:1	6
TFB50-10TLA	10	DC-6	BeO	50 ± 5%	1.30:1	6
TFB50-10TRA	10	DC-6	BeO	50 ± 5%	1.30:1	6
TFB50-10TIA	10	DC-6	BeO	50 ± 5%	1.30:1	7
TFB50-10TBE	10	DC-6	BeO	50 ± 5%	1.30:1	7
TFB50-10TBC	10	DC-6	BeO	50 ± 5%	1.30:1	7
TFB50-10TBAG	10	DC-6	BeO	50 ± 5%	1.30:1	8
TFB50-10TBG	10	DC-6	BeO	50 ± 5%	1.30:1	8
TFB50-20TBE	20	DC-3	BeO	50 ± 5%	1.20:1	8
TFB50-30TBM	30	DC-6	BeO	50 ± 5%	1.25:1	9
TFB50-30TBN	30	DC-6	BeO	50 ± 5%	1.25:1	9
TFB50-30TBO	30	DC-6	BeO	50 ± 5%	1.25:1	9
TFB50-30TIJ	30	DC-6	BeO	50 ± 5%	1.25:1	10
TFB50-30TRJ	30	DC-6	BeO	50 ± 5%	1.25:1	10
TFB50-30TLJ	30	DC-6	BeO	50 ± 5%	1.25:1	10
TFB50-30TBL	30	DC-4	BeO	50 ± 5%	1.25:1	11
TFB50-30TBR	30	DC-6	BeO	50 ± 5%	1.25:1	11
TFB50-40TBL	40	DC-4	BeO	50 ± 5%	1.25:1	11
TFB50-60TLJ	60	DC-6	BeO	50 ± 5%	1.20:1	12
TFB50-60TRJ	60	DC-6	BeO	50 ± 5%	1.20:1	12
TFB50-60TIJ	60	DC-6	BeO	50 ± 5%	1.20:1	12
TFB50-60TBR	60	DC-6	BeO	50 ± 5%	1.20:1	13
TFB50-80TBR	80	DC-3	BeO	50 ± 5%	1.20:1	13
TFB50-80THA	80	DC-2	BeO	50 ± 5%	1.20:1	13
TFB50-100TBR	100	DC-3	BeO	50 ± 5%	1.20:1	14
TFB50-100TIM	100	DC-3	BeO	50 ± 5%	1.15:1	14
TFB50-100TLM	100	DC-3	BeO	50 ± 5%	1.15:1	14
TFB50-100TRM	100	DC-3	BeO	50 ± 5%	1.15:1	15
TFB50-100THA	100	DC-3	BeO	50 ± 5%	1.20:1	15
TFB50-100TBZ	100	DC-3	BeO	50 ± 5%	1.20:1	15
TFB50-100TBAH	100	DC-3	BeO	50 ± 5%	1.20:1	16
TFB50-100THE	100	DC-3	BeO	50 ± 5%	1.15:1	16
TFB50-150TLM	150	DC-3	BeO	50 ± 5%	1.15:1	16
TFB50-150TRM	150	DC-3	BeO	50 ± 5%	1.15:1	17
TFB50-150TIM	150	DC-3	BeO	50 ± 5%	1.15:1	17
TFB50-150THE	150	DC-3	BeO	50 ± 5%	1.15:1	17
TFB50-150TBAH	150	DC-3	BeO	50 ± 5%	1.20:1	18
TFB50-250TBAH	250	DC-3	BeO	50 ± 5%	1.20:1	18
TFB50-250TLM	250	DC-3	BeO	50 ± 5%	1.15:1	18
TFB50-250TRM	250	DC-3	BeO	50 ± 5%	1.15:1	19
TFB50-250TIM	250	DC-3	BeO	50 ± 5%	1.15:1	19
TFB50-250THE	250	DC-3	BeO	50 ± 5%	1.15:1	19
TFB50-250TBAB	250	DC-3	BeO	50 ± 5%	1.10:1	20
TFB50-300TBAB	300	DC-2.5	BeO	50 ± 5%	1.15:1	20
TFB50-500TEG	500	DC-2	BeO	50 ± 5%	1.20:1	20
TFB50-800TEG	800	DC-0.5	BeO	50 ± 5%	1.15:1	21

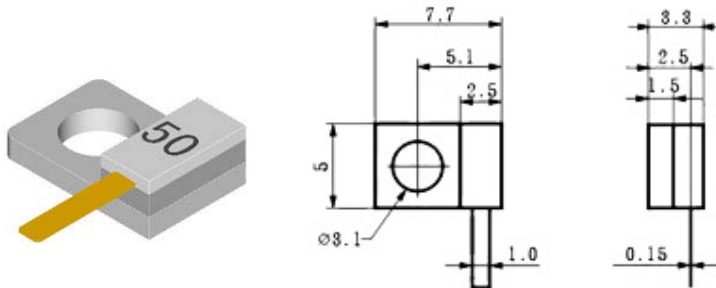
## Terminations

### Flange



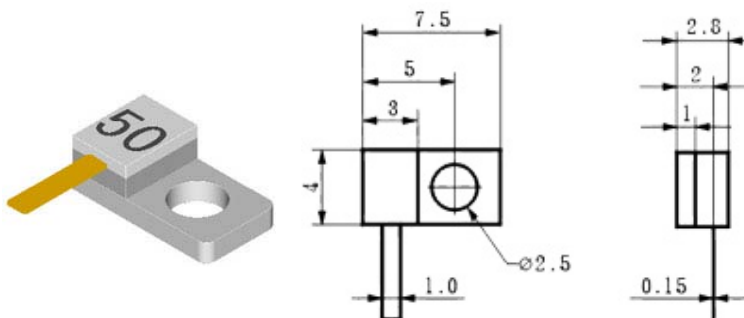
P/N		TFB50-5TLN
Power(W)		5
Substrate		BeO
Resistance( $\Omega$ )*		50 $\pm$ 5%
Frequency(GHz)*		DC-3
VSWR	DC-2GHz	1.15:1 max
	DC-3GHz	1.25:1 max
Operation Temperature( $^{\circ}$ C)		-55~+150
Lead Length(mm)*		4

\* Customization is available.



P/N		TFB50-5TRN
Power(W)		5
Substrate		BeO
Resistance( $\Omega$ )*		50 $\pm$ 5%
Frequency(GHz)*		DC-3
VSWR	DC-2GHz	1.15:1 max
	DC-3GHz	1.25:1 max
Operation Temperature( $^{\circ}$ C)		-55~+150
Lead Length(mm)*		4

\* Customization is available.

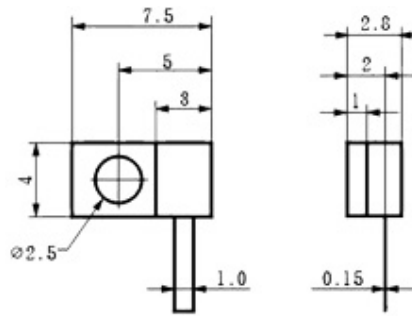


P/N		TFB50-5TLG
Power(W)		5
Substrate		BeO
Resistance( $\Omega$ )*		50 $\pm$ 5%
Frequency(GHz)*		DC-6
VSWR	DC-3GHz	1.10:1 max
	DC-5GHz	1.15:1 max
	DC-6GHz	1.25:1 max
Operation Temperature( $^{\circ}$ C)		-55~+150
Lead Length(mm)*		4

\* Customization is available.

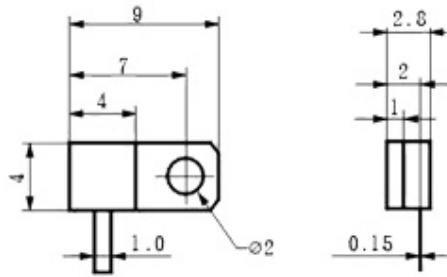
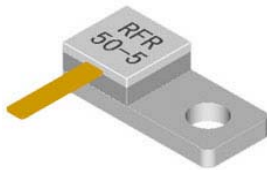
## Terminations

### Flange



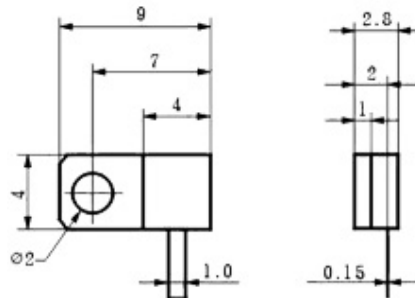
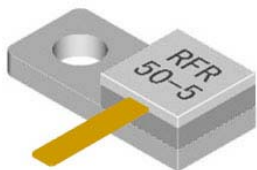
P/N		TFB50-5TRG
Power(W)		5
Substrate		BeO
Resistance( $\Omega$ )*		50 $\pm$ 5%
Frequency(GHz)*		DC-6
VSWR	DC-3GHz	1.10:1 max
	DC-5GHz	1.15:1 max
	DC-6GHz	1.25:1 max
Operation Temperature( $^{\circ}$ C)		-55~+150
Lead Length(mm)*		4

\* Customization is available.



P/N		TFB50-5TLA
Power(W)		5
Substrate		BeO
Resistance( $\Omega$ )*		50 $\pm$ 5%
Frequency(GHz)*		DC-6
VSWR	DC-3GHz	1.15:1 max
	DC-4GHz	1.20:1 max
	DC-6GHz	1.30:1 max
Operation Temperature( $^{\circ}$ C)		-55~+150
Lead Length(mm)*		4

\* Customization is available.

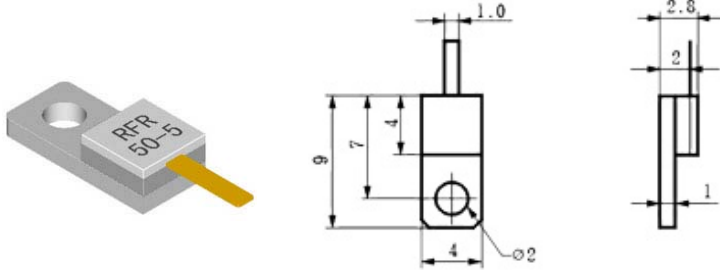


P/N		TFB50-5TRA
Power(W)		5
Substrate		BeO
Resistance( $\Omega$ )*		50 $\pm$ 5%
Frequency(GHz)*		DC-6
VSWR	DC-3GHz	1.15:1 max
	DC-4GHz	1.20:1 max
	DC-6GHz	1.30:1 max
Operation Temperature( $^{\circ}$ C)		-55~+150
Lead Length(mm)*		4

\* Customization is available.

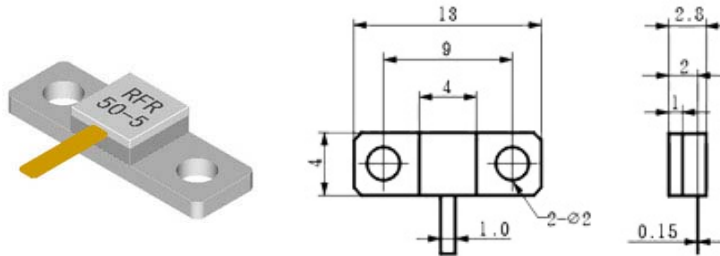
## Terminations

### Flange



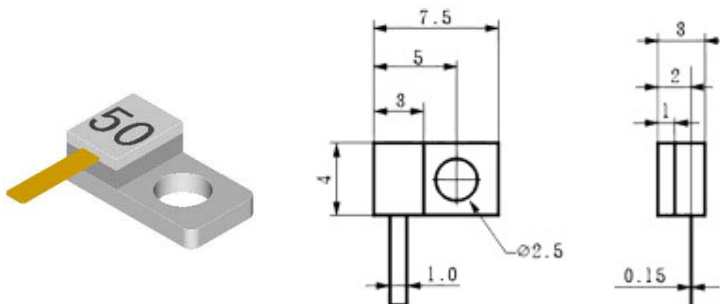
P/N		TFB50-5T1A
Power(W)		5
Substrate		BeO
Resistance( $\Omega$ )*		50 $\pm$ 5%
Frequency(GHz)*		DC-6
VSWR	DC-3GHz	1.15:1 max
	DC-4GHz	1.20:1 max
	DC-6GHz	1.30:1 max
Operation Temperature( $^{\circ}$ C)		-55~+150
Lead Length(mm)*		4

\* Customization is available.



P/N		TFB50-5TBE
Power(W)		5
Substrate		BeO
Resistance( $\Omega$ )*		50 $\pm$ 5%
Frequency(GHz)*		DC-6
VSWR	DC-3GHz	1.15:1 max
	DC-4GHz	1.20:1 max
	DC-6GHz	1.30:1 max
Operation Temperature( $^{\circ}$ C)		-55~+150
Lead Length(mm)*		4

\* Customization is available.

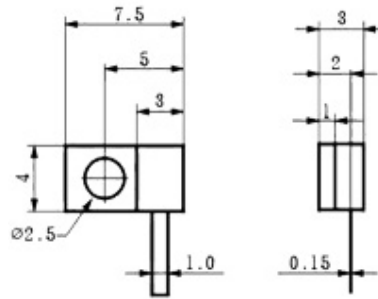


P/N		TFB50-10TLK
Power(W)		10
Substrate		BeO
Resistance( $\Omega$ )*		50 $\pm$ 5%
Frequency(GHz)*		DC-6
VSWR	DC-3GHz	1.10:1 max
	DC-4GHz	1.12:1 max
	DC-6GHz	1.25:1 max
Operation Temperature( $^{\circ}$ C)		-55~+150
Lead Length(mm)*		4

\* Customization is available.

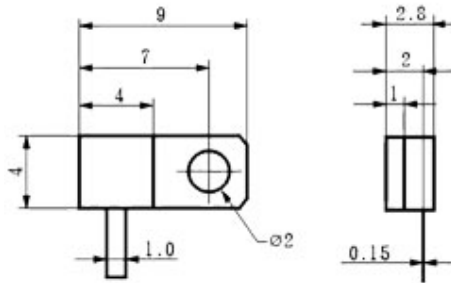
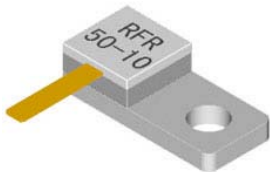
## Terminations

### Flange



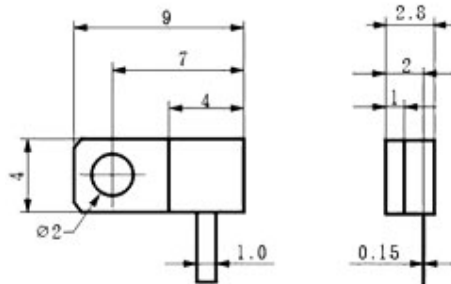
P/N		TFB50-10TRK
Power(W)		10
Substrate		BeO
Resistance( $\Omega$ )*		50 $\pm$ 5%
Frequency(GHz)*		DC-6
VSWR	DC-3GHz	1.10:1 max
	DC-4GHz	1.12:1 max
	DC-6GHz	1.25:1 max
Operation Temperature( $^{\circ}$ C)		-55~+150
Lead Length(mm)*		4

\* Customization is available.



P/N		TFB50-10TLA
Power(W)		10
Substrate		BeO
Resistance( $\Omega$ )*		50 $\pm$ 5%
Frequency(GHz)*		DC-6
VSWR	DC-3GHz	1.15:1 max
	DC-4GHz	1.20:1 max
	DC-6GHz	1.30:1 max
Operation Temperature( $^{\circ}$ C)		-55~+150
Lead Length(mm)*		4

\* Customization is available.

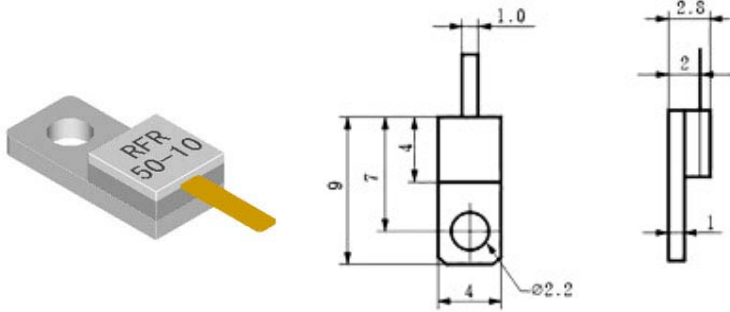


P/N		TFB50-10TRA
Power(W)		10
Substrate		BeO
Resistance( $\Omega$ )*		50 $\pm$ 5%
Frequency(GHz)*		DC-6
VSWR	DC-3GHz	1.15:1 max
	DC-4GHz	1.20:1 max
	DC-6GHz	1.30:1 max
Operation Temperature( $^{\circ}$ C)		-55~+150
Lead Length(mm)*		4

\* Customization is available.

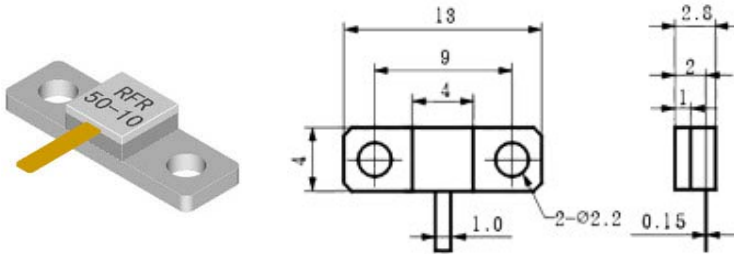
## Terminations

### Flange



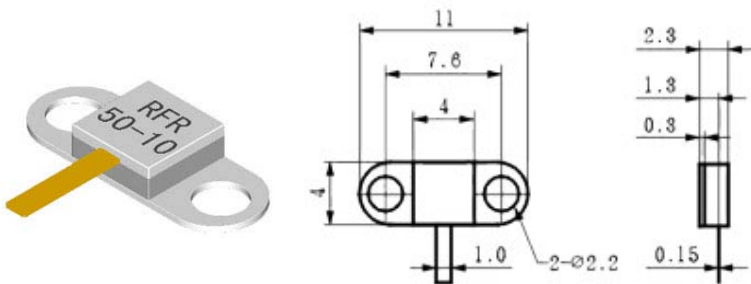
P/N		TFB50-10T1A
Power(W)		10
Substrate		BeO
Resistance( $\Omega$ )*		50 $\pm$ 5%
Frequency(GHz)*		DC-6
VSWR	DC-3GHz	1.15:1 max
	DC-4GHz	1.20:1 max
	DC-6GHz	1.30:1 max
Operation Temperature( $^{\circ}$ C)		-55~+150
Lead Length(mm)*		4

\* Customization is available.



P/N		TFB50-10TBE
Power(W)		10
Substrate		BeO
Resistance( $\Omega$ )*		50 $\pm$ 5%
Frequency(GHz)*		DC-6
VSWR	DC-3GHz	1.15:1 max
	DC-4GHz	1.20:1 max
	DC-6GHz	1.30:1 max
Operation Temperature( $^{\circ}$ C)		-55~+150
Lead Length(mm)*		4

\* Customization is available.

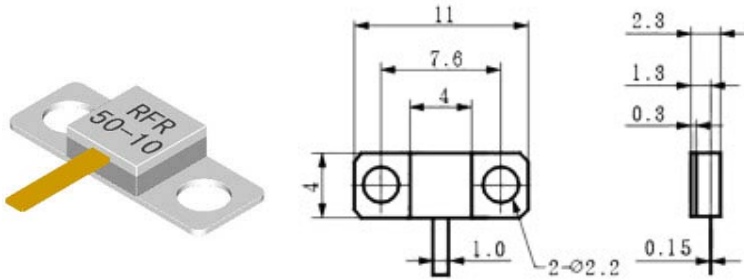


P/N		TFB50-10TBC
Power(W)		10
Substrate		BeO
Resistance( $\Omega$ )*		50 $\pm$ 5%
Frequency(GHz)*		DC-6
VSWR	DC-3GHz	1.15:1 max
	DC-4GHz	1.20:1 max
	DC-6GHz	1.30:1 max
Operation Temperature( $^{\circ}$ C)		-55~+150
Lead Length(mm)*		4

\* Customization is available.

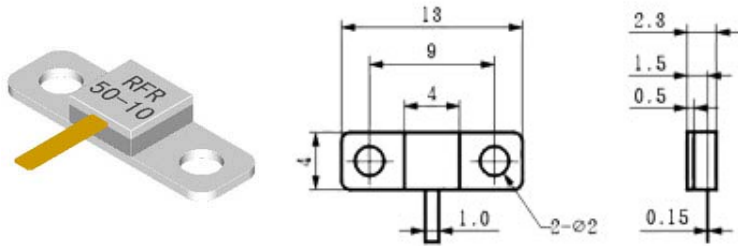
## Terminations

### Flange



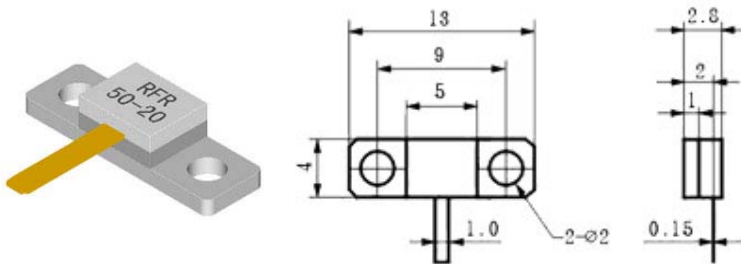
P/N		TFB50-10TBAG
Power(W)		10
Substrate		BeO
Resistance( $\Omega$ )*		50 $\pm$ 5%
Frequency(GHz)*		DC-6
VSWR	DC-3GHz	1.15:1 max
	DC-4GHz	1.20:1 max
	DC-6GHz	1.30:1 max
Operation Temperature( $^{\circ}$ C)		-55~+150
Lead Length(mm)*		4

\* Customization is available.



P/N		TFB50-10TBG
Power(W)		10
Substrate		BeO
Resistance( $\Omega$ )*		50 $\pm$ 5%
Frequency(GHz)*		DC-6
VSWR	DC-3GHz	1.15:1 max
	DC-4GHz	1.20:1 max
	DC-6GHz	1.30:1 max
Operation Temperature( $^{\circ}$ C)		-55~+150
Lead Length(mm)*		4

\* Customization is available.



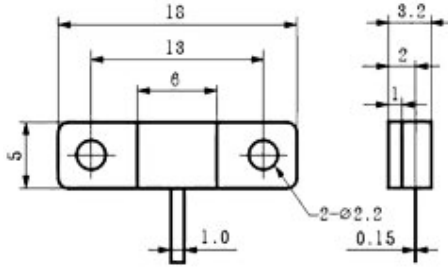
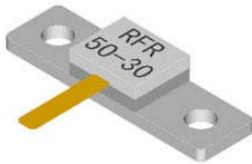
P/N		TFB50-20TBE
Power(W)		20
Substrate		BeO
Resistance( $\Omega$ )*		50 $\pm$ 5%
Frequency(GHz)*		DC-3
VSWR		1.20:1 max
Operation Temperature( $^{\circ}$ C)		-55~+150
Lead Length(mm)*		4

\* Customization is available.



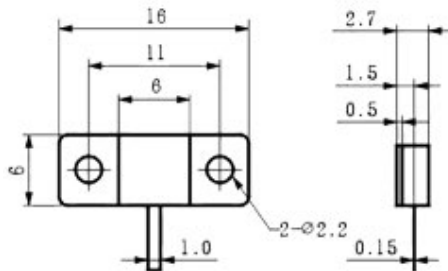
## Terminations

### Flange



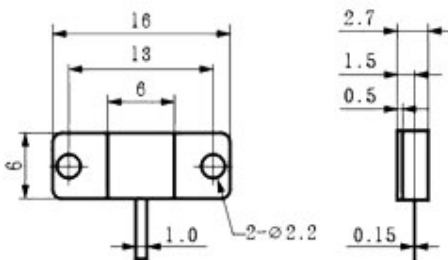
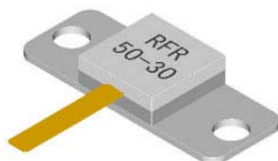
P/N		TFB50-30TBM
Power(W)		30
Substrate		BeO
Resistance( $\Omega$ )*		50 $\pm$ 5%
Frequency(GHz)*		DC-6
VSWR	DC-3GHz	1.10:1 max
	DC-5GHz	1.15:1 max
	DC-6GHz	1.25:1 max
Operation Temperature( $^{\circ}$ C)		-55~+150
Lead Length(mm)*		6

\* Customization is available.



P/N		TFB50-30TBN
Power(W)		30
Substrate		BeO
Resistance( $\Omega$ )*		50 $\pm$ 5%
Frequency(GHz)*		DC-6
VSWR	DC-3GHz	1.10:1 max
	DC-5GHz	1.15:1 max
	DC-6GHz	1.25:1 max
Operation Temperature( $^{\circ}$ C)		-55~+150
Lead Length(mm)*		6

\* Customization is available.

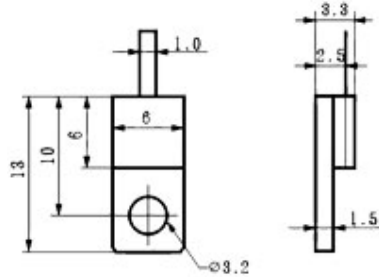
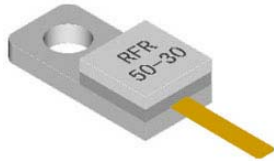


P/N		TFB50-30TBO
Power(W)		30
Substrate		BeO
Resistance( $\Omega$ )*		50 $\pm$ 5%
Frequency(GHz)*		DC-6
VSWR	DC-3GHz	1.10:1 max
	DC-5GHz	1.15:1 max
	DC-6GHz	1.25:1 max
Operation Temperature( $^{\circ}$ C)		-55~+150
Lead Length(mm)*		6

\* Customization is available.

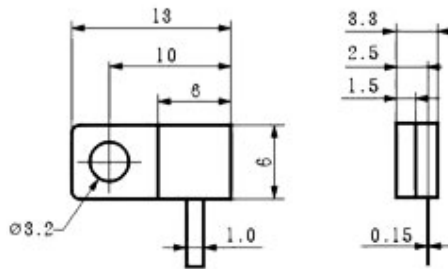
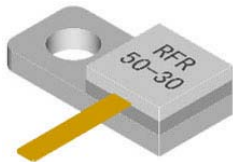
## Terminations

### Flange



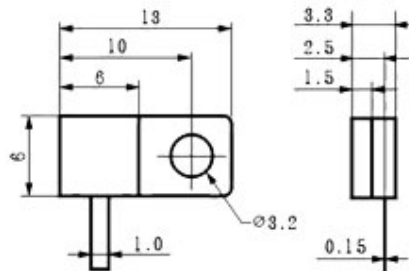
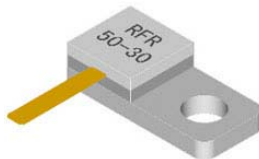
P/N		TFB50-30TIJ
Power(W)		30
Substrate		BeO
Resistance( $\Omega$ )*		50 $\pm$ 5%
Frequency(GHz)*		DC-6
VSWR	DC-3GHz	1.10:1 max
	DC-5GHz	1.15:1 max
	DC-6GHz	1.25:1 max
Operation Temperature( $^{\circ}$ C)		-55~+150
Lead Length(mm)*		6

\* Customization is available.



P/N		TFB50-30TRJ
Power(W)		30
Substrate		BeO
Resistance( $\Omega$ )*		50 $\pm$ 5%
Frequency(GHz)*		DC-6
VSWR	DC-3GHz	1.10:1 max
	DC-5GHz	1.15:1 max
	DC-6GHz	1.25:1 max
Operation Temperature( $^{\circ}$ C)		-55~+150
Lead Length(mm)*		6

\* Customization is available.

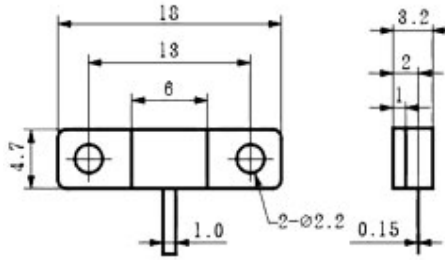
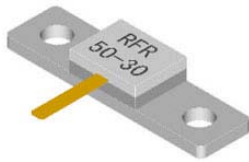


P/N		TFB50-30TLJ
Power(W)		30
Substrate		BeO
Resistance( $\Omega$ )*		50 $\pm$ 5%
Frequency(GHz)*		DC-6
VSWR	DC-3GHz	1.10:1 max
	DC-5GHz	1.15:1 max
	DC-6GHz	1.25:1 max
Operation Temperature( $^{\circ}$ C)		-55~+150
Lead Length(mm)*		6

\* Customization is available.

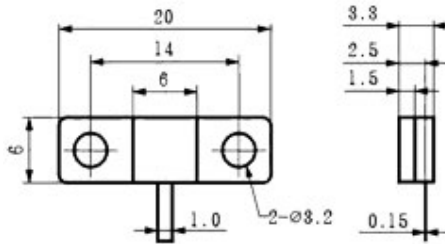
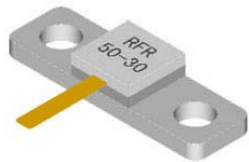
## Terminations

### Flange



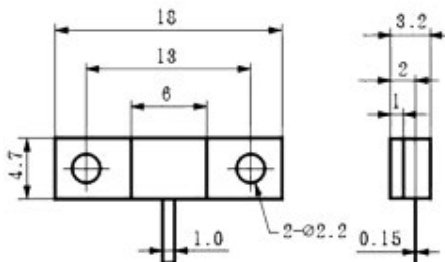
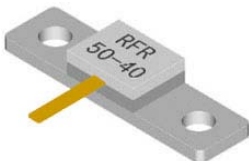
P/N	TFB50-30TBL	
Power(W)	30	
Substrate	BeO	
Resistance( $\Omega$ )*	50 $\pm$ 5%	
Frequency(GHz)*	DC-4	
VSWR	DC-3GHz	1.12:1 max
	DC-4GHz	1.25:1 max
Operation Temperature( $^{\circ}$ C)	-55~+150	
Lead Length(mm)*	6	

\* Customization is available.



P/N	TFB50-30TBR	
Power(W)	30	
Substrate	BeO	
Resistance( $\Omega$ )*	50 $\pm$ 5%	
Frequency(GHz)*	DC-6	
VSWR	DC-3GHz	1.10:1 max
	DC-5GHz	1.15:1 max
	DC-6GHz	1.25:1 max
Operation Temperature( $^{\circ}$ C)	-55~+150	
Lead Length(mm)*	6	

\* Customization is available.

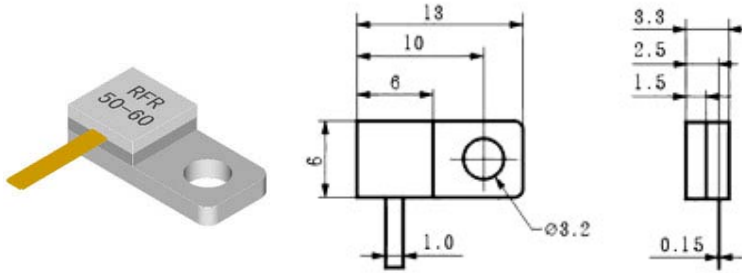


P/N	TFB50-40TBL	
Power(W)	40	
Substrate	BeO	
Resistance( $\Omega$ )*	50 $\pm$ 5%	
Frequency(GHz)*	DC-4	
VSWR	DC-3GHz	1.12:1 max
	DC-4GHz	1.25:1 max
Operation Temperature( $^{\circ}$ C)	-55~+150	
Lead Length(mm)*	6	

\* Customization is available.

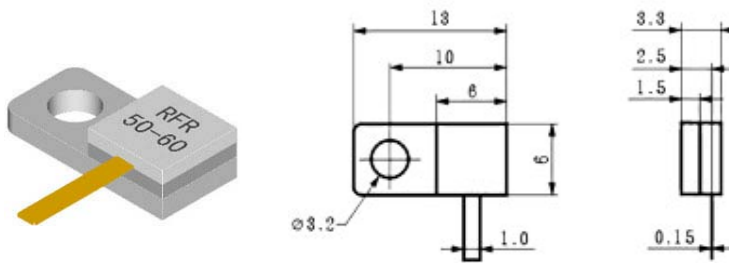
## Terminations

### Flange



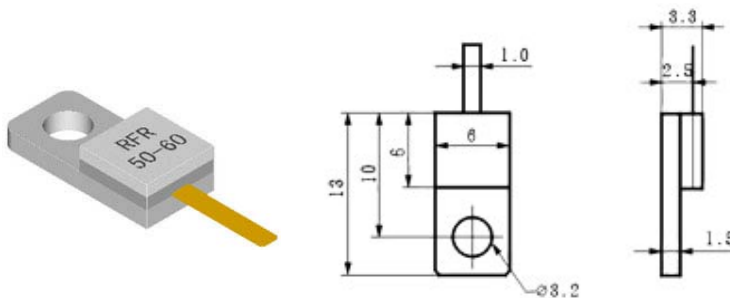
P/N		TFB50-60TLJ
Power(W)		60
Substrate		BeO
Resistance( $\Omega$ )*		50 $\pm$ 5%
Frequency(GHz)*		DC-6
VSWR	DC-3GHz	1.10:1 max
	DC-5GHz	1.15:1 max
	DC-6GHz	1.20:1 max
Operation Temperature( $^{\circ}$ C)		-55~+150
Lead Length(mm)*		6

\* Customization is available.



P/N		TFB50-60TRJ
Power(W)		60
Substrate		BeO
Resistance( $\Omega$ )*		50 $\pm$ 5%
Frequency(GHz)*		DC-6
VSWR	DC-3GHz	1.10:1 max
	DC-5GHz	1.15:1 max
	DC-6GHz	1.20:1 max
Operation Temperature( $^{\circ}$ C)		-55~+150
Lead Length(mm)*		6

\* Customization is available.

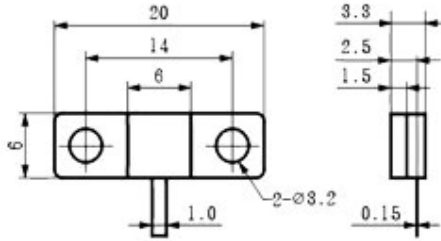
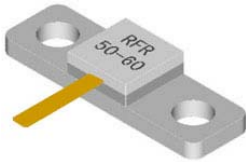


P/N		TFB50-60TIJ
Power(W)		60
Substrate		BeO
Resistance( $\Omega$ )*		50 $\pm$ 5%
Frequency(GHz)*		DC-6
VSWR	DC-3GHz	1.10:1 max
	DC-5GHz	1.15:1 max
	DC-6GHz	1.20:1 max
Operation Temperature( $^{\circ}$ C)		-55~+150
Lead Length(mm)*		6

\* Customization is available.

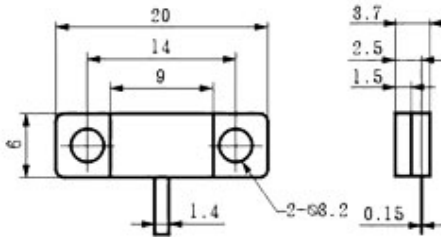
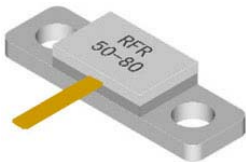
## Terminations

### Flange



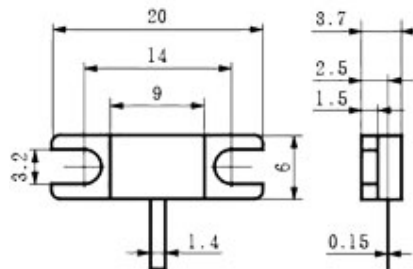
P/N	TFB50-60TBR	
Power(W)	60	
Substrate	BeO	
Resistance( $\Omega$ )*	50 $\pm$ 5%	
Frequency(GHz)*	DC-6	
VSWR	DC-3GHz	1.10:1 max
	DC-5GHz	1.15:1 max
	DC-6GHz	1.20:1 max
Operation Temperature( $^{\circ}$ C)	-55~+150	
Lead Length(mm)*	6	

\* Customization is available.



P/N	TFB50-80TBR	
Power(W)	80	
Substrate	BeO	
Resistance( $\Omega$ )*	50 $\pm$ 5%	
Frequency(GHz)*	DC-3	
VSWR	1.20:1 max	
Operation Temperature( $^{\circ}$ C)	-55~+150	
Lead Length(mm)*	6	

\* Customization is available.

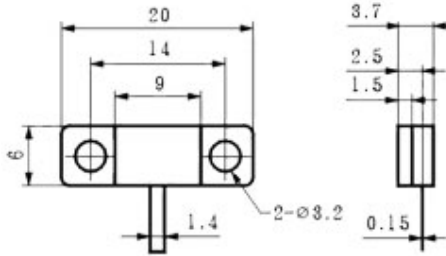
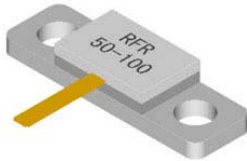


P/N	TFB50-80THA	
Power(W)	80	
Substrate	BeO	
Resistance( $\Omega$ )*	50 $\pm$ 5%	
Frequency(GHz)*	DC-2	
VSWR	1.20:1 max	
Operation Temperature( $^{\circ}$ C)	-55~+150	
Lead Length(mm)*	6	

\* Customization is available.

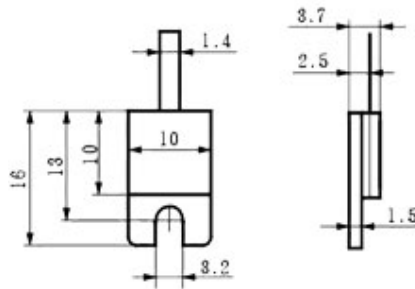
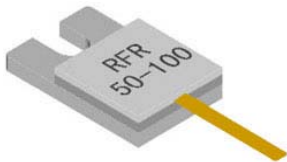
## Terminations

### Flange



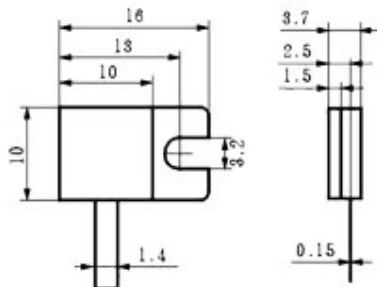
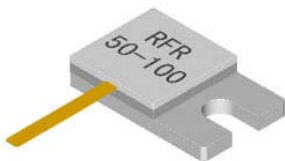
P/N	TFB50-100TBR
Power(W)	100
Substrate	BeO
Resistance( $\Omega$ )*	50 $\pm$ 5%
Frequency(GHz)*	DC-3
VSWR	1.20:1 max
Operation Temperature( $^{\circ}$ C)	-55~+150
Lead Length(mm)*	6

\* Customization is available.



P/N	TFB50-100TIM
Power(W)	100
Substrate	BeO
Resistance( $\Omega$ )*	50 $\pm$ 5%
Frequency(GHz)*	DC-3
VSWR	1.15:1 max
Operation Temperature( $^{\circ}$ C)	-55~+150
Lead Length(mm)*	6

\* Customization is available.

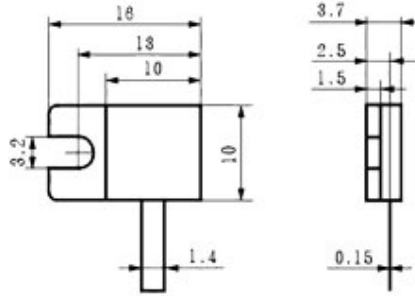
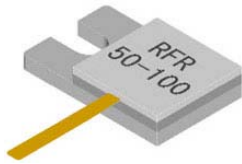


P/N	TFB50-100TLM
Power(W)	100
Substrate	BeO
Resistance( $\Omega$ )*	50 $\pm$ 5%
Frequency(GHz)*	DC-3
VSWR	1.15:1 max
Operation Temperature( $^{\circ}$ C)	-55~+150
Lead Length(mm)*	6

\* Customization is available.

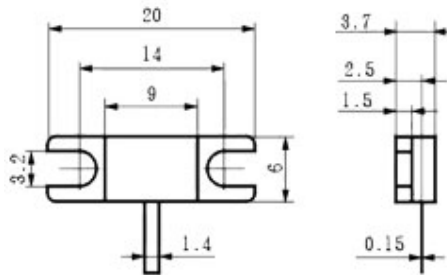
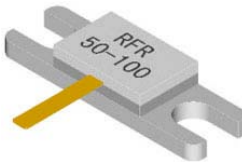
## Terminations

### Flange



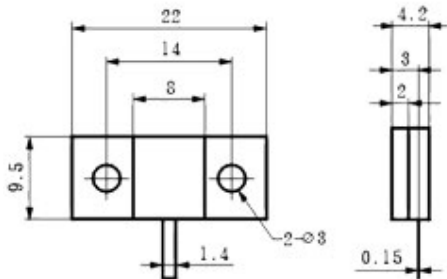
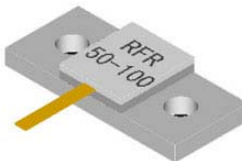
P/N	TFB50-100TRM
Power(W)	100
Substrate	BeO
Resistance( $\Omega$ )*	50 $\pm$ 5%
Frequency(GHz)*	DC-3
VSWR	1.15:1 max
Operation Temperature( $^{\circ}$ C)	-55~+150
Lead Length(mm)*	6

\* Customization is available.



P/N	TFB50-100THA
Power(W)	100
Substrate	BeO
Resistance( $\Omega$ )*	50 $\pm$ 5%
Frequency(GHz)*	DC-3
VSWR	1.20:1 max
Operation Temperature( $^{\circ}$ C)	-55~+150
Lead Length(mm)*	6

\* Customization is available.

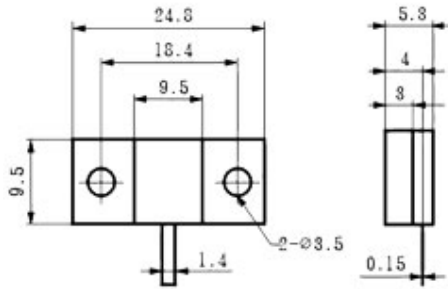
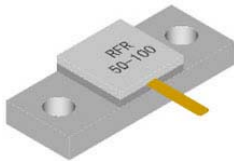


P/N	TFB50-100TBZ
Power(W)	100
Substrate	BeO
Resistance( $\Omega$ )*	50 $\pm$ 5%
Frequency(GHz)*	DC-3
VSWR	1.20:1 max
Operation Temperature( $^{\circ}$ C)	-55~+150
Lead Length(mm)*	6

\* Customization is available.

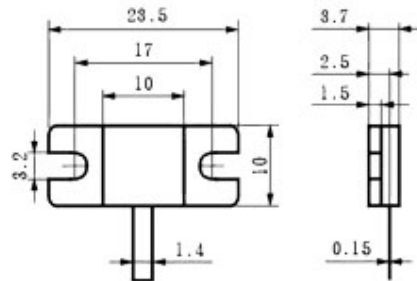
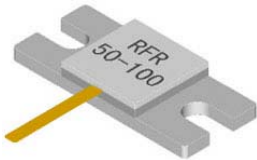
## Terminations

### Flange



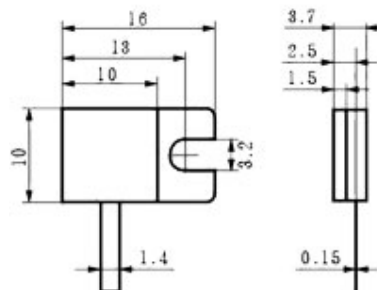
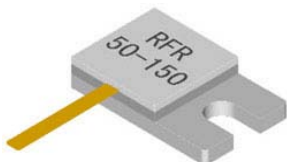
P/N	TFB50-100TBAH
Power(W)	100
Substrate	BeO
Resistance( $\Omega$ )*	50 $\pm$ 5%
Frequency(GHz)*	DC-3
VSWR	1.20:1 max
Operation Temperature( $^{\circ}$ C)	-55~+150
Lead Length(mm)*	6

\* Customization is available.



P/N	TFB50-100THE
Power(W)	100
Substrate	BeO
Resistance( $\Omega$ )*	50 $\pm$ 5%
Frequency(GHz)*	DC-3
VSWR	1.15:1 max
Operation Temperature( $^{\circ}$ C)	-55~+150
Lead Length(mm)*	6

\* Customization is available.



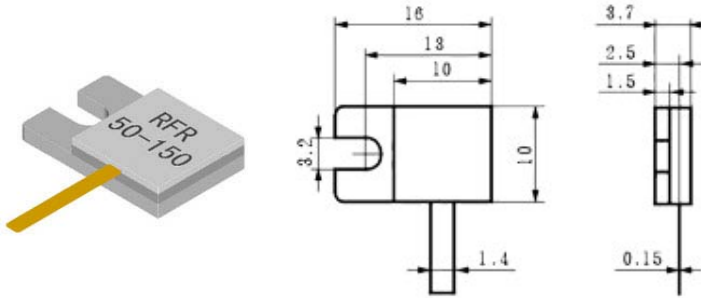
P/N	TFB50-150TLM
Power(W)	150
Substrate	BeO
Resistance( $\Omega$ )*	50 $\pm$ 5%
Frequency(GHz)*	DC-3
VSWR	1.15:1 max
Operation Temperature( $^{\circ}$ C)	-55~+150
Lead Length(mm)*	6

\* Customization is available.



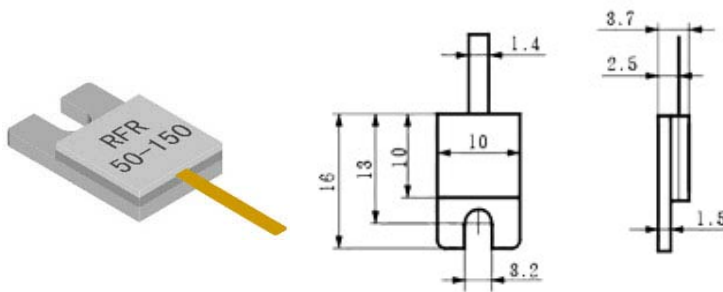
## Terminations

### Flange



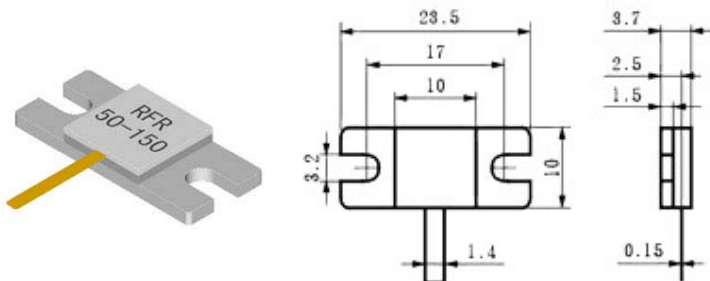
P/N	TFB50-150TRM
Power(W)	150
Substrate	BeO
Resistance( $\Omega$ )*	50 $\pm$ 5%
Frequency(GHz)*	DC-3
VSWR	1.15:1 max
Operation Temperature( $^{\circ}$ C)	-55~+150
Lead Length(mm)*	6

\* Customization is available.



P/N	TFB50-150TIM
Power(W)	150
Substrate	BeO
Resistance( $\Omega$ )*	50 $\pm$ 5%
Frequency(GHz)*	DC-3
VSWR	1.15:1 max
Operation Temperature( $^{\circ}$ C)	-55~+150
Lead Length(mm)*	6

\* Customization is available.

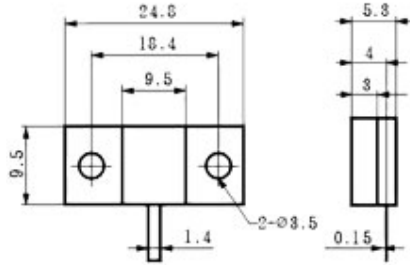
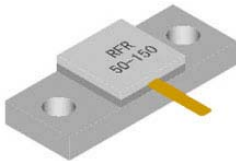


P/N	TFB50-150THE
Power(W)	150
Substrate	BeO
Resistance( $\Omega$ )*	50 $\pm$ 5%
Frequency(GHz)*	DC-3
VSWR	1.15:1 max
Operation Temperature( $^{\circ}$ C)	-55~+150
Lead Length(mm)*	6

\* Customization is available.

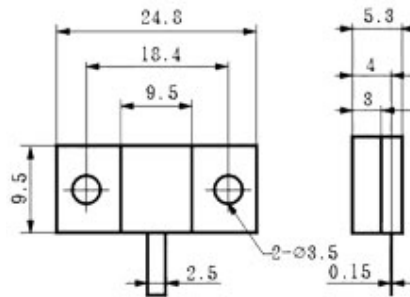
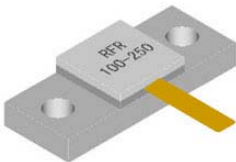
## Terminations

### Flange



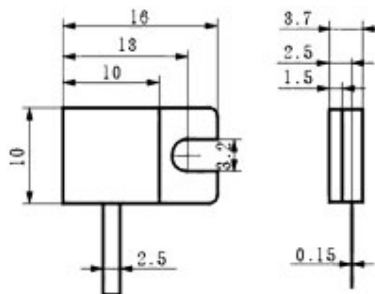
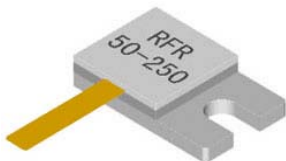
P/N	TFB50-150TBAH
Power(W)	150
Substrate	BeO
Resistance( $\Omega$ )*	50 $\pm$ 5%
Frequency(GHz)*	DC-3
VSWR	1.20:1 max
Operation Temperature( $^{\circ}$ C)	-55~+150
Lead Length(mm)*	6

\* Customization is available.



P/N	TFB50-250TBAH
Power(W)	250
Substrate	BeO
Resistance( $\Omega$ )*	50 $\pm$ 5%
Frequency(GHz)*	DC-3
VSWR	1.20:1 max
Operation Temperature( $^{\circ}$ C)	-55~+150
Lead Length(mm)*	6

\* Customization is available.

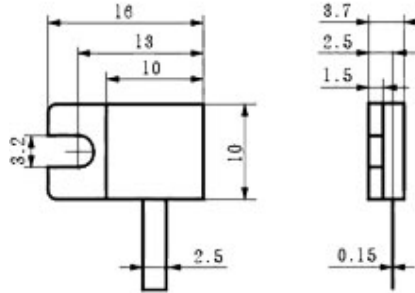
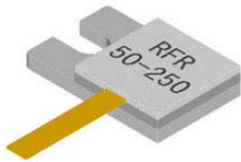


P/N	TFB50-250TLM
Power(W)	250
Substrate	BeO
Resistance( $\Omega$ )*	50 $\pm$ 5%
Frequency(GHz)*	DC-3
VSWR	1.15:1 max
Operation Temperature( $^{\circ}$ C)	-55~+150
Lead Length(mm)*	6

\* Customization is available.

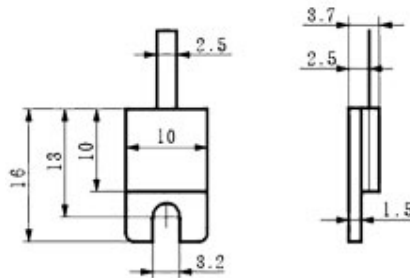
## Terminations

### Flange



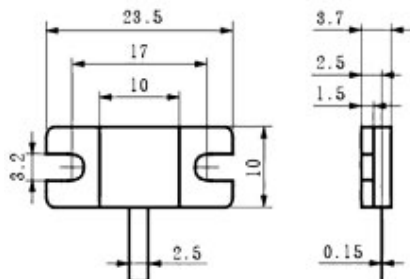
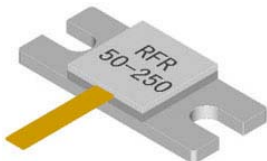
P/N	TFB50-250TRM
Power(W)	250
Substrate	BeO
Resistance( $\Omega$ )*	50 $\pm$ 5%
Frequency(GHz)*	DC-3
VSWR	1.15:1 max
Operation Temperature( $^{\circ}$ C)	-55~+150
Lead Length(mm)*	6

\* Customization is available.



P/N	TFB50-250TIM
Power(W)	250
Substrate	BeO
Resistance( $\Omega$ )*	50 $\pm$ 5%
Frequency(GHz)*	DC-3
VSWR	1.15:1 max
Operation Temperature( $^{\circ}$ C)	-55~+150
Lead Length(mm)*	6

\* Customization is available.

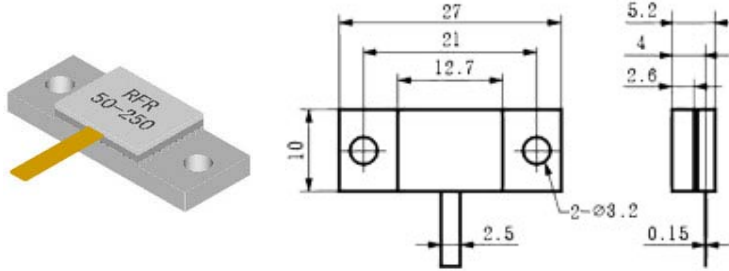


P/N	TFB50-250THE
Power(W)	250
Substrate	BeO
Resistance( $\Omega$ )*	50 $\pm$ 5%
Frequency(GHz)*	DC-3
VSWR	1.15:1 max
Operation Temperature( $^{\circ}$ C)	-55~+150
Lead Length(mm)*	6

\* Customization is available.

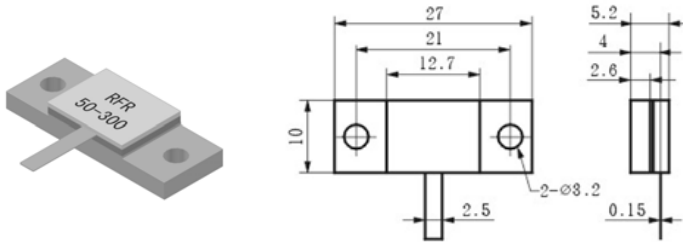
## Terminations

### Flange



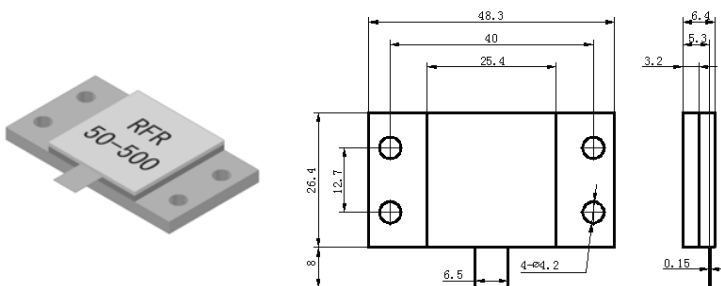
P/N	TFB50-250TBAB
Power(W)	250
Substrate	BeO
Resistance( $\Omega$ )*	50 $\pm$ 5%
Frequency(GHz)*	DC-3
VSWR	1.10:1 max
Operation Temperature( $^{\circ}$ C)	-55~+150
Lead Length(mm)*	6

\* Customization is available.



P/N	TFB50-300TBAB
Power(W)	300
Substrate	BeO
Resistance( $\Omega$ )*	50 $\pm$ 5%
Frequency(GHz)*	DC-2.5
VSWR	1.15:1 max
Operation Temperature( $^{\circ}$ C)	-55~+150
Lead Length(mm)*	8

\* Customization is available.

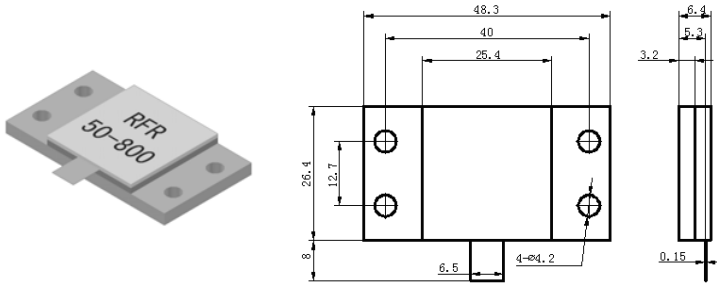


P/N	TFB50-500TEG
Power(W)	500
Substrate	BeO
Resistance( $\Omega$ )*	50 $\pm$ 5%
Frequency(GHz)*	DC-2
VSWR	1.20:1 max
Operation Temperature( $^{\circ}$ C)	-55~+150
Lead Length(mm)*	8

\* Customization is available.

## Terminations

### Flange



P/N	TFB50-800TEG
Power(W)	800
Substrate	BeO
Resistance( $\Omega$ )*	$50 \pm 5\%$
Frequency(GHz)*	DC-0.5
VSWR	1.15:1 max
Operation Temperature( $^{\circ}$ C)	-55~+150
Lead Length(mm)*	8

\* Customization is available.