

GPS Antenna GPA-MG201

OUTLINE

Antenna with LNA that receives GPS satellite waves efficiently and with high sensitivity.
2007 model with metal antenna.



FEATURES

- | | |
|--------------------------------|---------------------------------|
| 1. Antenna | : metal antenna |
| 2. Small size | : 33 (W) × 36 (D) × 14.3 (H) mm |
| 3. Environmental consideration | : lead free |
| 4. Waterproof | : Certified for JIS C0920 IPX7 |
| 5. Installation method | : magnetic (with rubber feet) |
| 6. Cable length | : standard 3 or 5m |
| 7. Connector | : standard CN, GT16, HFC |
| 8. Power supply voltage | : 3-5V |
| 9. Overseas production | (Tianjin, China) |

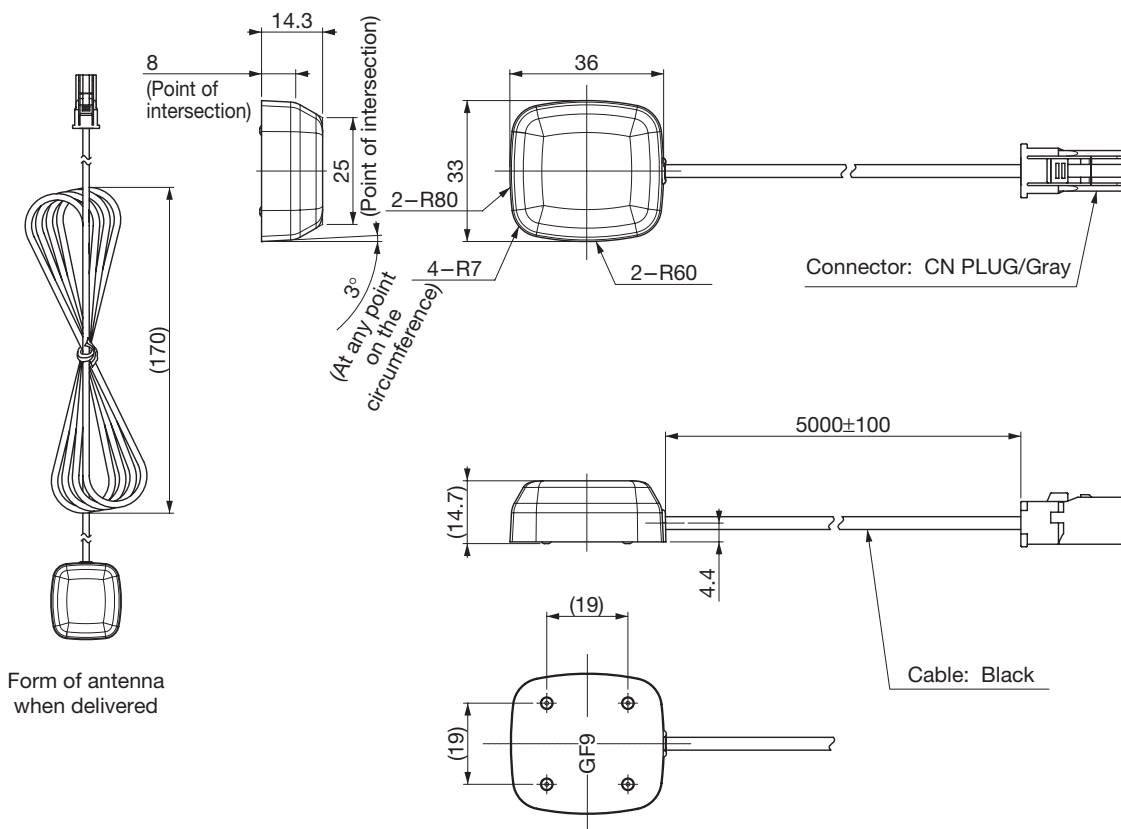
SPECIFICATIONS

Item		Specifications
Antenna	Reception frequency	1575.42±1.023MHz
	Reception polarization	Right Handed Circular Polarization
	Antenna gain	2dBi typ. ★1.
	Output impedance	50Ω
LNA	Reception frequency	1575.42±1.023MHz
	Noise figure	1.1dB typ.
	Gain	26dB typ.
	Gain flatness (within reception band)	1dB max.
	Ex-band attenuation	20dB typ. (±50MHz)
Overall	Overall gain	28dBi typ. (Zenith) ★2
	Power supply voltage	3 or 4.5 or 5V
	Consumption current	19mA typ.
	Minimum Order	30,000Pcs/Year

★Parameters: Attached to GND board (70×70mm)

★Parameters: Attached to GND board (70×70mm, cable length 5m)

DIMENSIONS



*For the technical details of the products in this page, please refer to RF / NETWORK Sales Div. Phone : 042-310-4707.