

## MC2421 Series

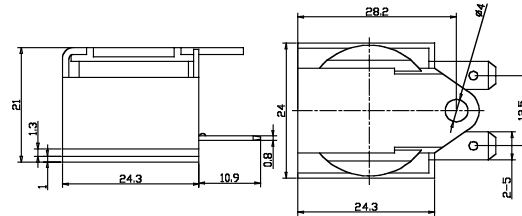
### Specifications:

Parameters	Units	MC2421A230HP
▶ Min Sound Pressure Level at 10cm	dB(A)	83
Rated Voltage	Vac	230
Operating Voltage	Vac	160 - 260
Resonance Frequency	Hz	-
▶ Max Operating Current	mA	30
Operating Temperature	°C	-20 - +60
Case Material	-	PBT
Weight	g	34



Unit: mm • Tolerance: ±0.5mm

▶ Value applying rated voltage



## MC2620 Series

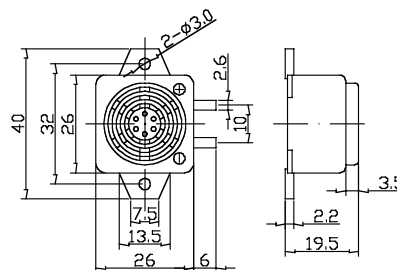
### Specifications:

Parameters	Units	MC2620A06AP	MC2620A12AP	MC2620A24AP
▶ Min Sound Pressure Level at 10cm	dB(A)	90	90	90
Rated Voltage	Vdc	6	12	24
Operating Voltage	Vdc	4 - 8	8 - 16	20 - 28
Resonance Frequency	Hz	400 ± 100	400 ± 100	400 ± 100
▶ Max Operating Current	mA	35	35	35
Operating Temperature	°C	-20 - +70	-20 - +70	-20 - +70
Case Material	-	ABS	ABS	ABS
Weight	g	17	17	17



Unit: mm • Tolerance: ±0.5mm

▶ Value applying rated voltage



## MC2620G Series

### Specifications:

Parameters	Units	MC2620GA06AP	MC2620GA12AP	MC2620GA24AP
▶ Min Sound Pressure Level at 10cm	dB(A)	90	90	90
Rated Voltage	Vdc	6	12	24
Operating Voltage	Vdc	4 - 8	8 - 16	20 - 28
Resonance Frequency	Hz	400 ± 100	400 ± 100	400 ± 100
▶ Max Operating Current	mA	35	35	35
Operating Temperature	°C	-20 - +70	-20 - +70	-20 - +70
Case Material	-	ABS	ABS	ABS
Weight	g	17	17	17



Unit: mm • Tolerance: ±0.5mm

▶ Value applying rated voltage

