

MC2618 Series

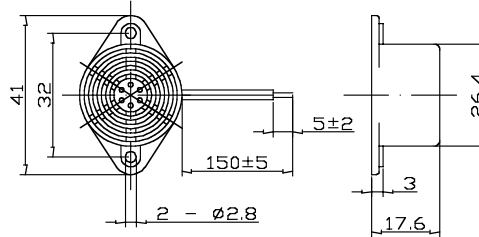
Specifications:

Parameters	Units	MC2618A06AW	MC2618A12AW	MC2618A24AW
Min Sound Pressure Level at 10cm	dBA	90	90	90
Rated Voltage	Vdc	6	12	24
Operating Voltage	Vdc	4 - 8	7 - 16	20 - 28
Resonance Frequency	Hz	400 ± 100	400 ± 100	400 ± 100
Max Operating Current	mA	33	23	21
Operating Temperature	°C	-20 - +70	-20 - +70	-20 - +70
Case Material	-	ABS	ABS	ABS
Weight	g	17	17	17



Unit: mm • Tolerance: ±0.5mm

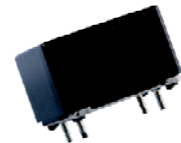
▶ Value applying rated voltage



MC3428 Series

Specifications:

Parameters	Units	MC3428A01AP	MC3428A03AP	MC3428A06AP
Min Sound Pressure Level at 30cm	dBA	70	70	70
Rated Voltage	Vdc	1.5	3	6
Operating Voltage	Vdc	1 - 3	2 - 4	4 - 8
Resonance Frequency	Hz	400 ± 50	400 ± 50	400 ± 50
Max Operating Current	mA	20	20	25
Operating Temperature	°C	-20 - +65	-20 - +65	-20 - +65
Case Material	-	ABS	ABS	ABS
Weight	g	8	8	8



Specifications:

Parameters	Units	MC3428A09AP	MC3428A12AP	MC3428A24AP
Min Sound Pressure Level at 30cm	dBA	75	75	75
Rated Voltage	Vdc	9	12	24
Operating Voltage	Vdc	6 - 12	9 - 15	15 - 27
Resonance Frequency	Hz	400 ± 50	400 ± 50	400 ± 50
Max Operating Current	mA	25	30	30
Operating Temperature	°C	-20 - +65	-20 - +65	-20 - +65
Case Material	-	ABS	ABS	ABS
Weight	g	8	8	8

Unit: mm • Tolerance: ±0.5mm

▶ Value applying rated voltage

