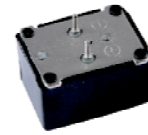


## MC2314 Series

Specifications:

Parameters	Units	MC2314A01AP	MC2314A03AP	MC2314A06AP
▶ Min Sound Pressure Level at 30cm	dBA	70	70	70
Rated Voltage	Vdc	1.5	3	6
Operating Voltage	Vdc	1 - 3	2 - 4	4 - 8
Resonance Frequency	Hz	400 ± 50	400 ± 50	400 ± 50
▶ Max Operating Current	mA	20	20	25
Operating Temperature	°C	-20 - +65	-20 - +65	-20 - +65
Case Material	-	ABS	ABS	ABS
Weight	g	8	8	8

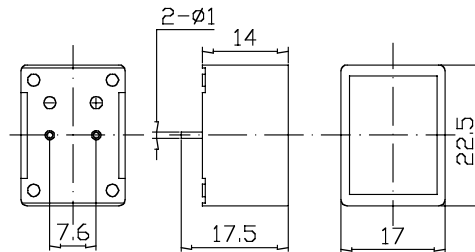


Specifications:

Parameters	Units	MC2314A09AP	MC2314A12AP	MC2314A24AP
▶ Min Sound Pressure Level at 30cm	dBA	75	75	75
Rated Voltage	Vdc	9	12	24
Operating Voltage	Vdc	6 - 12	9 - 15	15 - 27
Resonance Frequency	Hz	400 ± 50	400 ± 50	400 ± 50
▶ Max Operating Current	mA	25	30	30
Operating Temperature	°C	-20 - +65	-20 - +65	-20 - +65
Case Material	-	ABS	ABS	ABS
Weight	g	8	8	8

▶ Value applying rated voltage

Unit: mm • Tolerance: ±0.5mm



## MC2315 Series

Specifications:

Parameters	Units	MC2315A06NP	MC2315A12NP	MC2315A24NP
▶ Min Sound Pressure Level at 30cm	dBA	70	70	70
Rated Voltage	Vdc	6	12	24
Operating Voltage	Vdc	3 - 8	8 - 16	18 - 30
Resonance Frequency	Hz	400 ± 100	400 ± 100	400 ± 100
▶ Max Operating Current	mA	23	20	30
Operating Temperature	°C	-20 - +70	-20 - +70	-20 - +70
Case Material	-	ABS	ABS	ABS
Weight	g	10	10	10



▶ Value applying rated voltage

Unit: mm • Tolerance: ±0.5mm

