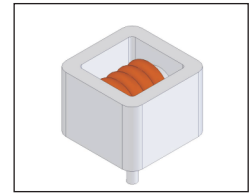


# Through Hole Power Inductors

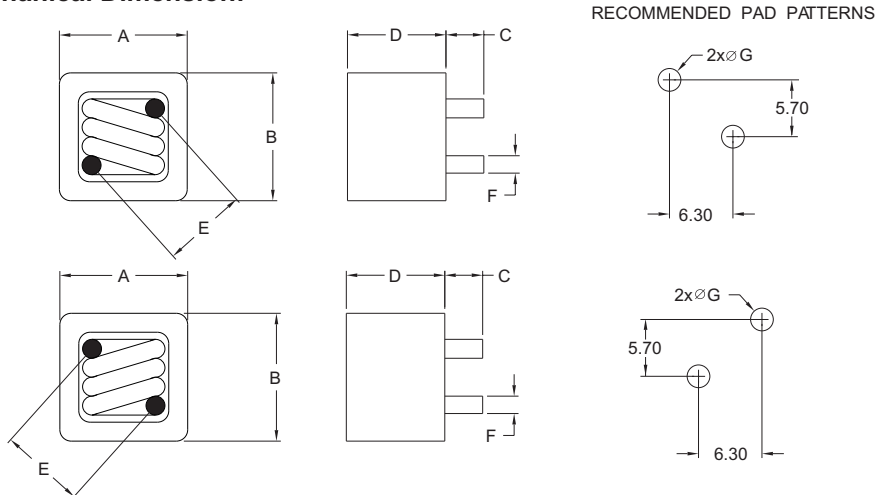
## THAR1285, 1290 & 1211C Type

### Features

- RoHS compliant.
- High current ( Isat up to 40A ) through hole type.
- Magnetically shielded, suitable for high density mounting.
- High energy storage and low DCR.
- Ideal for power source circuits, DC-DC converter, DC-AC inverters inductor application.
- In addition to the standard versions shown here, customized inductors are available to meet your exact requirements.



### Mechanical Dimension:



UNIT : mm/inch

PART NO.	A (MAX)	B (MAX)	C	D (MAX)	E	F	G	H
THAR1285	11.9 / 0.469	11.9 / 0.469	3.5 0.5 / 0.138 0.02	8.5 / 0.335	8.5 0.3 / 0.335 0.012	1.5 0.1 / 0.059 0.004	1.8 / 0.071	1
THAR1290	11.9 / 0.469	11.9 / 0.469	3.5 0.5 / 0.138 0.02	9.0 / 0.354	8.5 0.3 / 0.335 0.012	1.5 0.1 / 0.059 0.004	1.8 / 0.071	1
THAR1211C	12.0 / 0.472	11.0 / 0.433	3.5 0.5 / 0.138 0.02	11.0 / 0.433	8.5 0.3 / 0.335 0.012	1.4 0.1 / 0.055 0.004	1.7 / 0.067	2

### Electrical Characteristics : At 25°C: 100KHz, 1V

PART NO.	Lo <sup>1</sup> (uH)	DCR (mΩ)	Isat <sup>2</sup> (Adc)	Irms <sup>3</sup> (Adc)
THAR1285-R47	0.47	0.80±7%	50	38
THAR1285-0R6	0.60	0.80±7%	50	38
THAR1290-R19	0.19	0.67±7%	60	38
THAR1290-0R3	0.30	0.80±7%	50	38
THAR1290-1R2	1.20	3.20 MAX	30	28
THAR1290-1R8	1.80	4.30 MAX	25	18
THAR1211C-0R3	0.30	0.75±7%	40	38
THAR1211C-0R5	0.50	1.00±7%	40	38

1. Lo is the initial inductance and the tolerance is ±20%.
2. Isat is the DC current which cause the inductance drop approximately 20% of its nominal inductance without current.
3. Irms is the DC current which cause the surface temperature of the part increase less than 45°C.
4. Operating temperature : -40°C to 125°C ( including self-temperature rise ).



DELTA ELECTRONICS, INC.

(TAOYUAN PLANT CPBG) 252, SAN YING ROAD, KUEISAN INDUSTRIAL ZONE, TAOYUAN SHIEN, 333, TAIWAN, R.O.C.

TEL: 886-3-3591968; FAX: 886-3-3591991

http://www.deltaww.com