

**Features**

- Industry Standard Package and Circuits
- Power Control Building Blocks

DESCRIPTION

Modules come in an industry standard package, offering two circuits that can be used singly or as power control building blocks. All models feature highly efficient thermal management for greatly extended cycle life.

PART NUMBER IDENTIFICATION

Ex.: CSKT253/16E

Series Type CSK -Case style	Circuit Type (see schematic diagrams) Example: T	Current 253 - 250 Amps	Voltage 08E - 800 10E - 1000 12E - 1200 14E - 1400 16E - 1600
--------------------------------	--------------------------------------------------------	---------------------------	------------------------------------------------------------------------------

ELECTRICAL SPECIFICATIONS**RATINGS**

SYMBOL	SPECIFICATION	250
I_D	Maximum DC Output Current ($T_c = 85^\circ\text{C}$) [A]	250
V_F	Maximum Voltage Drop	1.7V @ $I_F=750$ Apk
T_J	Operating Junction Temperature Range	-40°C to $+125^\circ\text{C}$
di/dt	Critical Rate of Rise of On-State Current @ $T_J=125^\circ\text{C}$ [A/ μs]	800
dv/dt	Critical Rate of Rise of Off-State Voltage [V/ μs]	1000
V_{RRM}	Repetitive Peak Reverse Voltage (AC Line Nominal) [Vpk]	800 (280 Vac) 1000 (380 Vac) 1200 (480 Vac) 1400 (530 Vac) 1600 (600 Vac)
I_{TSM}	Maximum Non-Repetitive Surge Current ($1/2$ Cycle, 60Hz) [A] @ 45°C	9000
I^2T	Maximum I^2T for Fusing ($t=8.3\text{ms}$) [A^2sec] @ 45°C	336000
I_{GT}	Maximum Required Gate Current to Trigger @ 25°C [mA]	150
V_{GT}	Maximum Required Gate Voltage to Trigger @ 25°C [V]	2.0
$P_{G(AV)}$	Average Gate Power [W]	0.3
V_{GM}	Maximum Peak Gate Voltage (Reverse) [V]	5.0
R_{qJC}	Maximum Thermal Resistance Junction to Ceramic Base per Chip [$^\circ\text{K/W}$]	0.129
V_{ISOL}	Isolation Voltage [VRMS]	3000

MECHANICAL SPECIFICATION

Weight: (typical)	15.17 oz. (430g)
Torque Required	Terminal Stud Screw (M5) : 22-44 inch lb Mounting Screw (M8) : 106-132 inch lb

© C3 Semiconductors, LLC. All rights are reserved

For recommended applications and more information contact:
USA: Sales Support (888) 882-8689

Email: sales@c3semi.com WEB SITE: <http://www.C3semi.com>



250 Amp • SCR/DIODE Modules

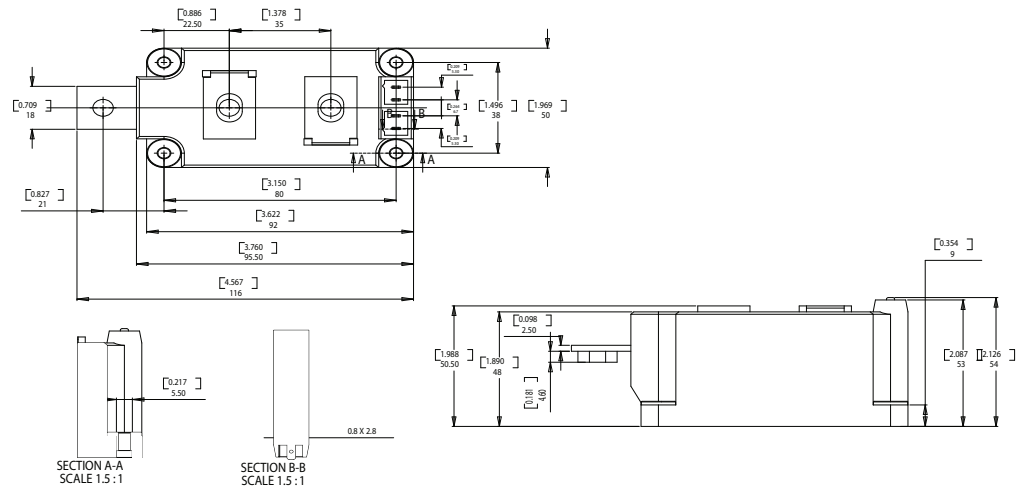
Features

- Industry Standard Package and Circuits
- Power Control Building Blocks

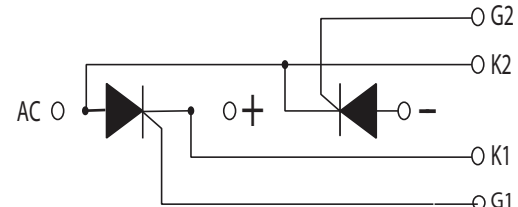
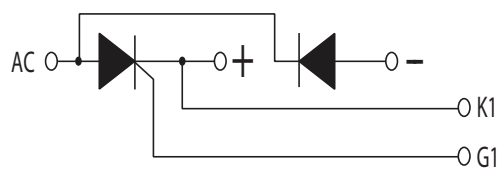
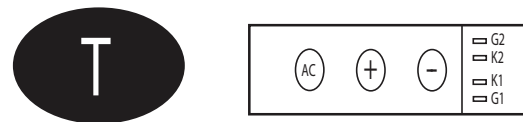
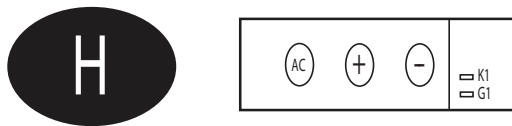
DESCRIPTION

Modules come in an industry standard package, offering two circuits that can be used singly or as power control building blocks. All models feature highly efficient thermal management for greatly extended cycle life.

MECHANICAL DIMENSIONS All dimensions are in millimeters (inches)



SERIES CSK CIRCUITS



© C3 Semiconductors, LLC. All rights are reserved

For recommended applications and more information contact:
 USA : Sales Support (888) 882-8689

Email: sales@c3semi.com WEB SITE: <http://www.C3semi.com>