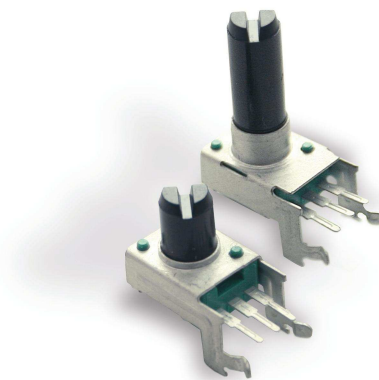


**Model P090**  
**9mm Rotary Potentiometer**  
**Insulated Shaft**  
**Conductive Plastic Element**  
**100,000 Cycle Life**  
**Snap-in Clip**  
**RoHS Compliant**



**MODEL STYLES**

Side Adjust	P090L
Top Adjust	P090S

**ELECTRICAL<sup>1</sup>**

Resistance Range, Ohms	500 – 1M
Standard Resistance Tolerance	± 20%
Residual Resistance	20 ohms max.
Input Voltage, maximum	50 Vac max.
Power rating, Watts	0.03W
Dielectric Strength	250Vac, 1 minute
Insulation Resistance, Minimum	100M ohms at 250Vdc
Sliding Noise	100mV max.
Actual Electrical Travel, Nominal	240°

**MECHANICAL**

Total Mechanical Travel	280°± 10°
Static Stop Strength	40 oz-in
Rotational Torque, Maximum	1.2 oz-in

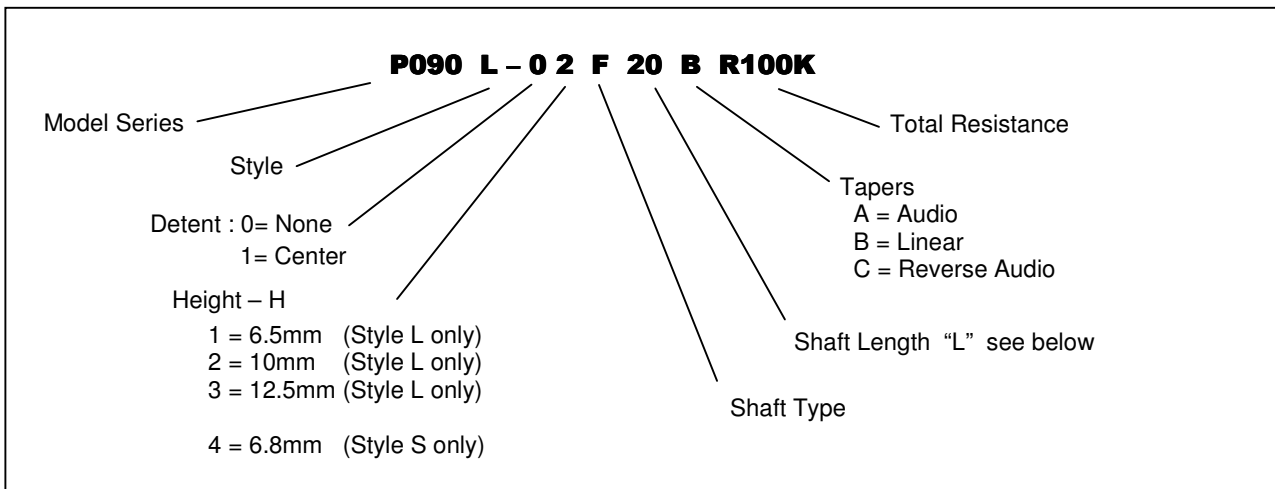
**ENVIRONMENTAL**

Operating Temperature Range	-20°C to +70°C
Rotational Life	100,000 cycles

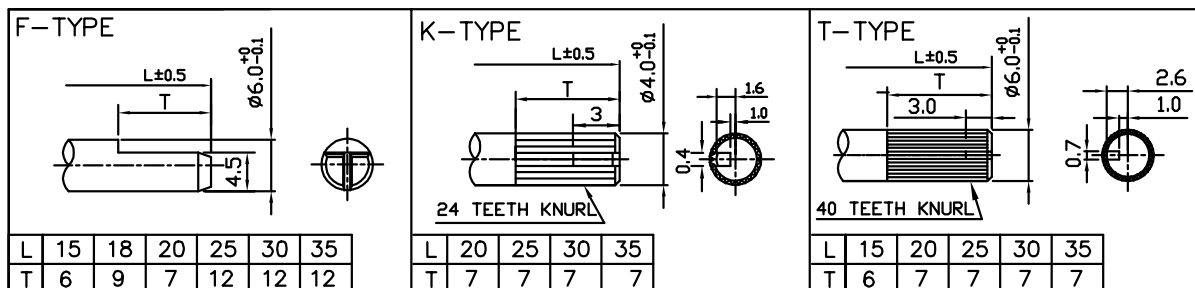
<sup>1</sup> Specifications subject to change without notice.

# Model P090

## ORDERING INFORMATION<sup>2</sup>



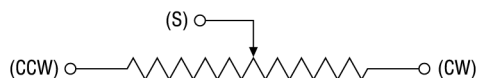
### Shaft Type



## STANDARD RESISTANCE VALUES, OHMS

500    1K    2K    5K    10K    20K    50K    100K    200K    500K    1MEG

## CIRCUIT DIAGRAM

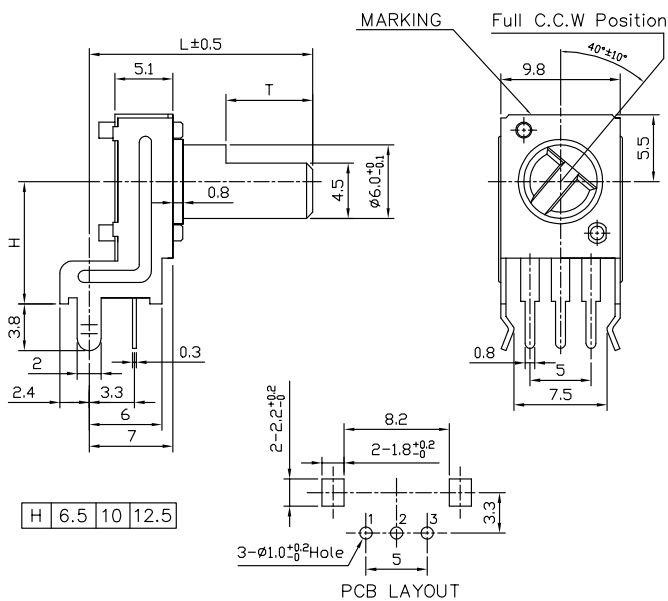


<sup>2</sup> Contact our customer service for custom designs and features.

# Model P090

## OUTLINE DRAWING

### Model P090L (Side Adjust)



### Model P090S (Top Adjust)

