



Micro Commercial Components

Micro Commercial Components
 20736 Marilla Street Chatsworth
 CA 91311
 Phone: (818) 701-4933
 Fax: (818) 701-4939

ER3A-HT THRU ER3M-HT

Features

- Lead Free Finish/Rohs Compliant (Note1) ("P" Suffix designates Compliant. See ordering information)
- High surge current capability
- High reliability
- Case Material: Molded Plastic. UL Flammability Classification Rating 94V-0 and MSL rating 1

Maximum Ratings

- Operating Temperature: -55°C to +125°C
- Storage Temperature: -55°C to +150°C

MCC Part Number	Device Marking	Maximum Recurrent Peak Reverse Voltage	Maximum RMS Voltage	Maximum DC Blocking Voltage
ER3A-HT	ER3A	50V	35V	50V
ER3B-HT	ER3B	100V	70V	100V
ER3D-HT	ER3D	200V	140V	200V
ER3G-HT	ER3G	400V	280V	400V
ER3J-HT	ER3J	600V	420V	600V
ER3K-HT	ER3K	800V	560V	800V
ER3M-HT	ER3M	1000V	700V	1000V

Electrical Characteristics @ 25°C Unless Otherwise Specified

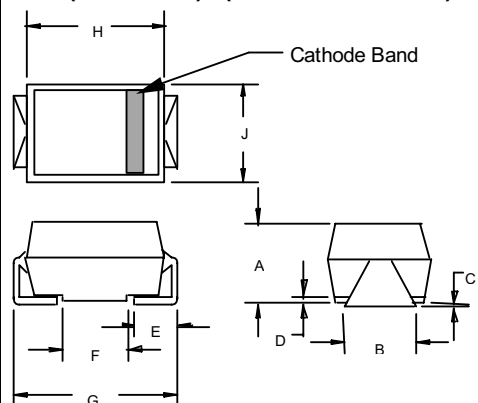
Average Forward Current	$I_{F(AV)}$	3.0A	$T_A = 55^\circ\text{C}$
Peak Forward Surge Current	I_{FSM}	150A	8.3ms, half sine
Maximum Instantaneous Forward Voltage ER3A-HT~ER3D-HT ER3G-HT ER3J-HT~ER3M-HT	V_F	1.0V 1.3V 1.7V	$I_{FM} = 3.0A$; $T_A = 25^\circ\text{C}^*$
Maximum DC Reverse Current At Rated DC Blocking Voltage	I_R	10uA 200uA	$T_A = 25^\circ\text{C}$ $T_A = 100^\circ\text{C}$
Maximum Reverse Recovery Time ER3A-HT~ER3G-HT ER3J-HT~ER3M-HT	T_{rr}	50ns 75ns	$I_F = 0.5A$, $I_R = 1.0A$ $I_{RR} = 0.25A$
Typical Junction Capacitance ER3A-HT~ER3G-HT ER3J-HT~ER3M-HT	C_J	80pF 50pF	Measured at 1.0MHz, $V_R = 4.0V$

*Pulse Test: Pulse Width 300µsec, Duty Cycle 1%

Note: 1. High Temperature Solder Exemptions Applied, see EU Directive Annex 7.

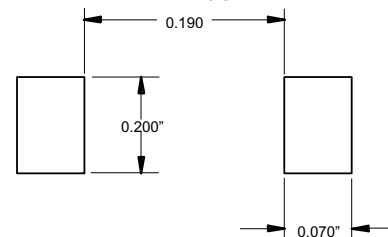
3.0 Amp High Efficient Rectifiers 50 to 1000 Volts

DO-214AB (HSMC) (Round Lead)



DIM	INCHES		MM		NOTE
	MIN	MAX	MIN	MAX	
A	.200	.214	5.08	5.43	
B	.177	.203	4.70	5.30	
C	.002	.005	.05	.13	
D		.02		.51	
E	.047	.056	1.20	1.42	
F	.168	.179	4.27	4.55	
G	.309	.322	7.85	8.18	
H	.239	.243	6.08	6.18	
J	.234	.240	5.95	6.10	

SUGGESTED SOLDER PAD LAYOUT



ER3A-HT THRU ER3M-HT

RATINGS AND CHARACTERISTIC CURVES

FIG. 1- REVERSE RECOVERY TIME CHARACTERISTIC AND TEST CIRCUIT DIAGRAM

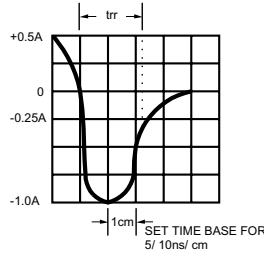
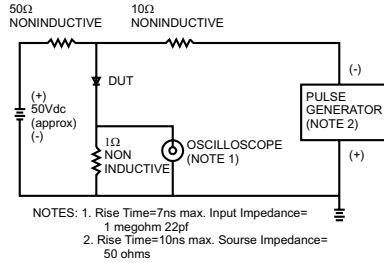


FIG. 2- MAXIMUM AVERAGE FORWARD CURRENT DERATING

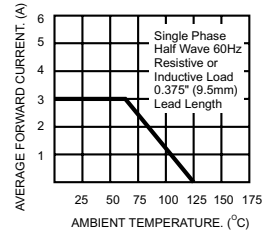


FIG. 3- TYPICAL REVERSE CHARACTERISTICS

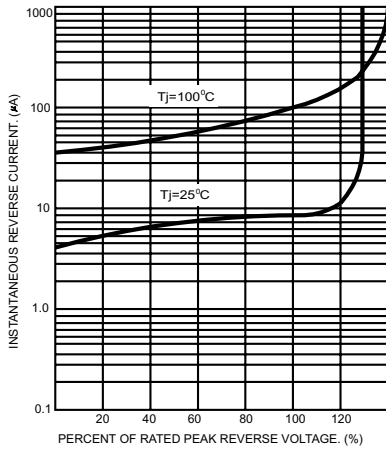


FIG. 5- TYPICAL FORWARD CHARACTERISTICS

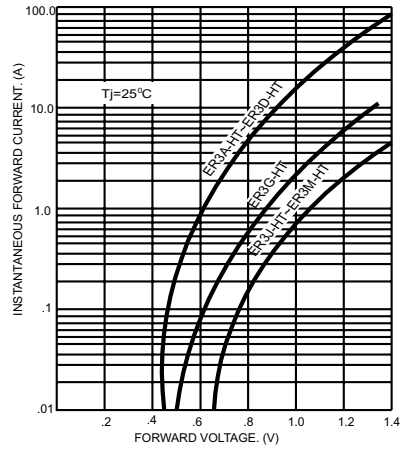


FIG. 4- MAXIMUM NON-REPETITIVE FORWARD SURGE CURRENT

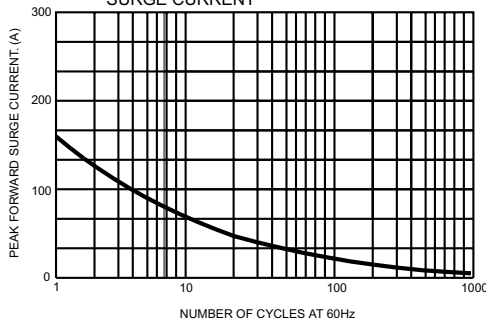
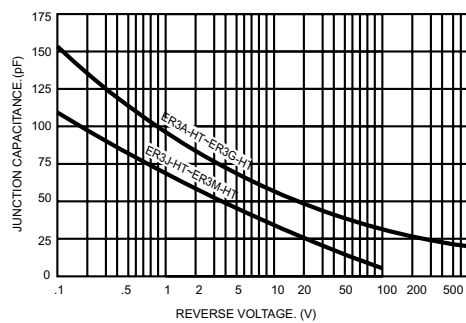


FIG. 6- TYPICAL JUNCTION CAPACITANCE





Micro Commercial Components

Ordering Information

Device	Packing
(Part Number)P	Tape&Reel;1.5Kpcs/Reel

IMPORTANT NOTICE

Micro Commercial Components Corp. reserve the right to make changes without further notice to any product herein to make corrections, modifications , enhancements , improvements , or other changes . *Micro Commercial Components Corp.* does not assume any liability arising out of the application or use of any product described herein; neither does it convey any license under its patent rights ,nor the rights of others . The user of products in such applications shall assume all risks of such use and will agree to hold *Micro Commercial Components Corp.* and all the companies whose products are represented on our website, harmless against all damages.

APPLICATIONS DISCLAIMER

Products offer by *Micro Commercial Components Corp.* are not intended for use in Medical, Aerospace or Military Applications.