

# Switchbox TR15RA Series

15W SINGLE OUTPUT AC/DC SWITCHING ADAPTER

## Features

- Universal Input Range 90-264VAC
- Meets EN55022 Class B
- Continuous Short Circuit Protection
- Interchangeable AC Plugs
- Over Voltage Protection
- CEC Level IV Compliant (Output Cable Length 1800mm)



## Specifications

### INPUT

Input range	90-264VAC.
Frequency	47-63 Hz.
Input current	0.4 max.
Inrush current	50A max @ 240VAC.
Isolation	4242VDC, input to output.
Leakage current	0,25mA max.
Conducted EMI	EN55022 Class B.

### OUTPUT

Hold-up time	10mS typ. @ 115VAC.
Short circuit protection	Continuous (auto-recovery).
Over voltage protection	Yes.

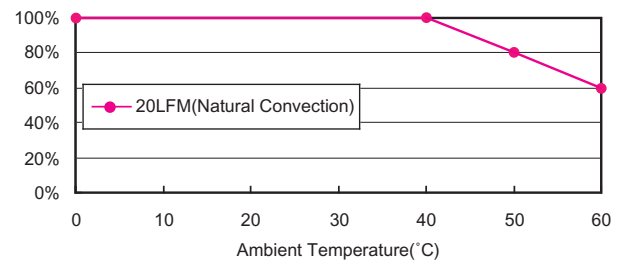
### ENVIRONMENTAL

Operating temperature	0°C to +40°C.
Storage temperature	-20C to +85°C.
Cooling	Natural convection.

### GENERAL

Dimensions	80,60 x 47,90 x 43,30 mm.
Weight	150g.

### DERATING CURVE



#### Note:

1. Voltage setpoint at 60% load.
2. Add a 0.1uF ceramic capacitor and a 10uF E.L. capacitor to output for Ripple & Noise measuring @20MHz BW.
3. Line regulation measured from 100Vac to 240Vac, full load.
4. Load regulation measured from 60% to full load and from 60% to 20% load (60% +/- 40% load).
5. "Various TR Series adapters are PSE certified. PSE certification alone is not sufficient for importation into Japan. A valid PSE mark must contain the name of the importer as shown in the example below. If PSE mark is required, the name of the registered importer must be supplied to Cincon on order placement. Product labels will not contain PSE mark if importer name is not supplied. Consult factory or local representative for details"



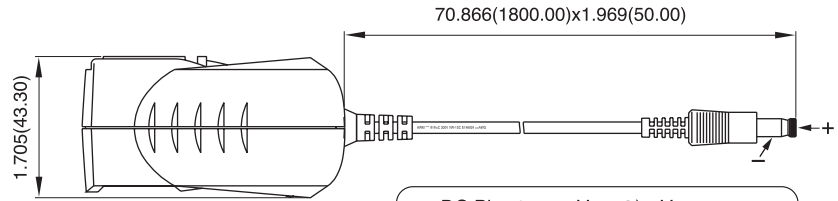
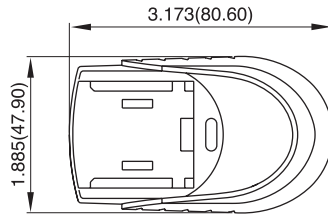
ORDERING INFORMATION			
TR15RAXXX - XX	E	XX	XX - BK
<b>Model Number</b>	<b>DC Plug Type</b>	<b>DC Cable Length and Type</b>	<b>Colour of Overmold Case</b>
	* Please see configuration datasheet for more detailed descriptions	01 : 720mm 02 : 1200mm 03 : 1800mm 11 : 720mm with Ferrite Core 12 : 1200mm with Ferrite Core 13 : 1800mm with Ferrite Core * 20AWG / UL2468	BE : Blue GY : Gray RD : Red PE : Purple OR : Orange

MODEL NUMBER	OUTPUT VOLTAGE	MAX LOAD	MIN LOAD	RIPPLE & NOISE	VOLTAGE ACCURACY	LINE REGULATION	LOAD REGULATION	SWITCHING FREQUENCY	EFFICIENCY MIN
TR15RA050	5 V	2.0 A	0 A	1%	3%	1%	4%	80KHz typ	70%
TR15RA060	6 V	1.7 A	0 A	1%	2%	1%	3%	80KHz typ	71%
TR15RA090	9 V	1.4 A	0 A	1%	2%	1%	2%	80KHz typ	76%
TR15RA120	12 V	1.1 A	0 A	1%	2%	1%	2%	80KHz typ	78%
TR15RA150	15 V	1.0 A	0 A	1%	2%	1%	2%	80KHz typ	77%
TR15RA180	18 V	830 mA	0 A	1%	2%	1%	2%	80KHz typ	79%
TR15RA240	24 V	625 mA	0 A	1%	2%	1%	2%	80KHz typ	80%

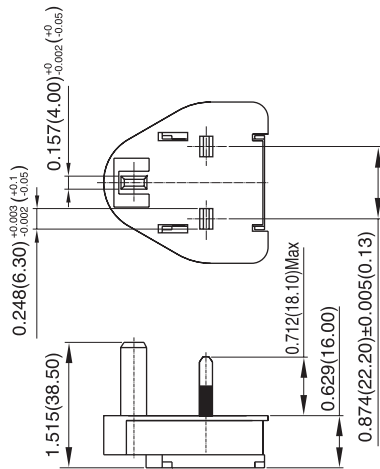
# Switchbox TR15RA Series

15W SINGLE OUTPUT AC/DC SWITCHING ADAPTER

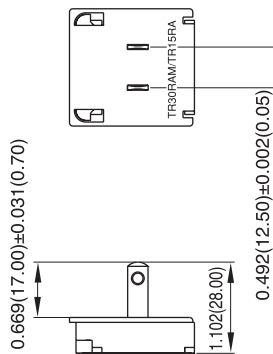
All Dimensions In Inches(mm)  
 Tolerance Inches: x.xxx= ±0.02  
 Millimeters: x.xx= ±0.5



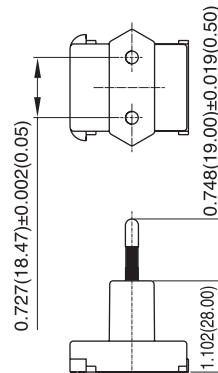
DC Plug type: V+ --●-- V-  
 DC Plug: Straight (ø5.5/ø2.1) L12mm  
 18AWG / 1800mm



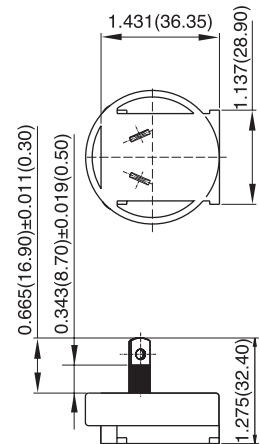
P/N: G8706502020



P/N: G8706302020



P/N: G8706402020



P/N: G8706602020

All specifications typical at nominal line, full load and 25°C unless otherwise noted.