



Power Resistors

DST Series Power Resistor / 功率线绕电阻器

DST Series

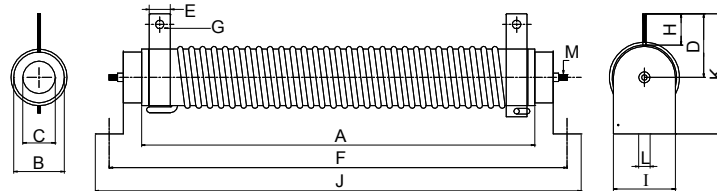
A tubular ceramic resistor has a fixed number of windings and is wound with alloy wire as a resistance element. The staggering wound is made according to the desired resistance value, followed by the placement of the component mounts. It provides high starter power and is durable, is high temperature-resistant, dissipates heat well, has a low temperature coefficient that varies in direct proportion, and is suitable for application loads involving brief current surges. Due to the set number of windings on the ceramic form, the resistance value range is relatively low. Tolerance is $\pm 10\%$ and this product is available in various shapes or in resistance boxes.

Suitable for motor starters, load measurements, industrial machinery, electric distribution, instrumentation, and automation control installations, etc. For custom specifications, please contact us to discuss the details.

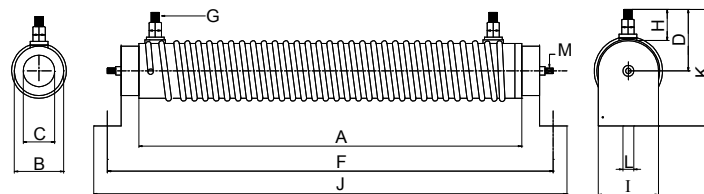


► Power Resistor DST Type 500W

Tubular Ceramic Starter



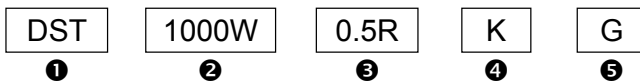
► Power Resistor DST Type 600W - 1000W



Wattage Rating	Dimensions(mm)												Weight	Resistance Range(Ω)
	A	B	C	D	E	F	G	H	I	J	K	L		
500W	280	40	23	45	15	326	6	22	34	346	85	8	970/g	3.5 Ω -7 Ω
600W	300	44	26	50	15	342	8	32	34	362	90	8	1277/g	0.5 Ω -3 Ω
1000W	420	48	30	56	15	470	8	32	40	490	105	9	1887/g	0.5 Ω -3 Ω

Notice: All dimensions might be changed or modified, please refer to last updating specification.

► How to Order



❶ Product Type: DST type

❷ Rated Wattage: 500W~1000W

❸ Resistance Value(Ω): (Ω)
Indicates Resistance Value in Units of Ohms.

❹ Resistance Tolerance: K($\pm 10\%$)

❺ Assembly Method

Code	Assembly Method
C	Clip Mount.
G	Horizontal Mount.
N	No Mount.
Z	Vertical Mount.

