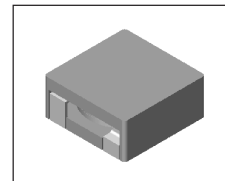


# SMT Power Inductor

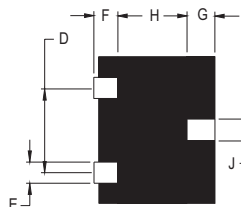
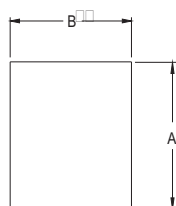
## HMP1352 Type

### Features

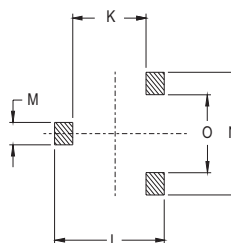
- RoHS compliant.
- Low profile, SMD type.
- High current.
- Magnetic shielded.
- High energy storage and low DCR.
- Provided with embossed carrier tape packing.
- Ideal for power source circuits, DC-DC converter, DC-AC inverters inductor applications.
- In addition to the standard versions shown here, customized inductors are available to meet your exact requirements.



### Mechanical Dimension :



### RECOMMENDED PAD PATTERNS



UNIT : mm/inch  
 D = 7.80 / 0.307  
 F = 2.50 / 0.098  
 G = 2.50 / 0.098  
 H = 8.00 / 0.315  
 J = 3.20 / 0.126  
 K = 7.00 / 0.276  
 L = 14.00 / 0.551  
 M = 3.70 / 0.146

UNIT : mm/inch

PART NO.	A	B	C (MAX)	E	N	O
HMP1352	12.70 ± 0.5 / 0.50 ± 0.02	13.00 ± 0.5 / 0.512 ± 0.02	5.20 / 0.205	2.40 / 0.094	11.20 / 0.441	4.40 / 0.173
HMP1352S	12.70 ± 0.5 / 0.50 ± 0.02	13.00 ± 0.5 / 0.512 ± 0.02	5.20 / 0.205	2.00 / 0.079	10.80 / 0.425	4.80 / 0.189

### Electrical Characteristics : At 25°C: 100KHz, 1V

PART NO.	L <sup>1</sup> (uH)	L <sub>i</sub> (uH) MIN	DCR (mΩ) MAX	I <sub>sat</sub> <sup>2</sup> (Adc)	I <sub>rms</sub> <sup>3</sup> (Adc)
HMP1352-1R5	1.50	1.20	3.5	25.0	17.0
HMP1352-2R2	2.20	1.76	3.5	20.0	17.0
HMP1352M-4R2	4.20	3.30	5.5	11.0	14.0
HMP1352-4R7	4.70	3.76	5.5	9.0	14.0
HMP1352BM-4R7	4.70	3.76	5.5	13.5	14.0
HMP1352S-R85	0.85	0.68	2.2	30.0	21.0
HMP1352S-1R0	1.00	0.80	2.2	30.0	21.0
HMP1352S-1R5	1.50	1.20	2.2	20.0	21.0

1. Tolerance of inductance is ± 20%.
2. I<sub>sat</sub> is the DC current which cause the inductance drop to L<sub>i</sub>.
3. I<sub>rms</sub> is the DC current which cause the surface temperature of the part increase less than 45°C.
4. Operating temperature : -20°C to 105°C ( including self-temperature rise ).



**DELTA ELECTRONICS, INC.**

(TAOYUAN PLANT CPBG) 252, SAN YING ROAD, KUEISAN INDUSTRIAL ZONE, TAOYUAN SHIEN, 333, TAIWAN, R.O.C.

TEL: 886-3-3591968; FAX: 886-3-3591991

<http://www.deltaww.com>