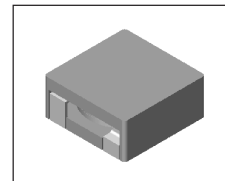


SMT Power Inductor

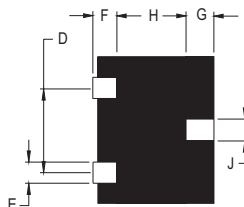
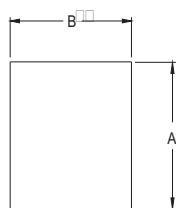
HMP1335, 1340, 1345 & 1348S Type

Features

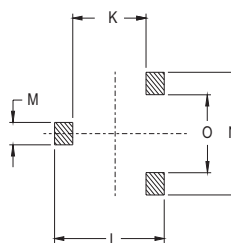
- RoHS compliant.
- Low profile, SMD type.
- High current.
- Magnetic shielded.
- High energy storage and low DCR.
- Provided with embossed carrier tape packing.
- Ideal for power source circuits, DC-DC converter, DC-AC inverters inductor applications.
- In addition to the standard versions shown here, customized inductors are available to meet your exact requirements.



Mechanical Dimension :



RECOMMENDED PAD PATTERNS



UNIT : mm/inch
 D = 7.80 / 0.307
 F = 2.50 / 0.098
 G = 2.50 / 0.098
 H = 8.00 / 0.315
 J = 3.20 / 0.126
 K = 7.00 / 0.276
 L = 14.00 / 0.551
 M = 3.70 / 0.146

UNIT : mm/inch

PART NO.	A	B	C (MAX)	E	N	O
HMP1335	12.70 ± 0.5 / 0.50 ± 0.02	13.00 ± 0.5 / 0.512 ± 0.02	3.50 / 0.138	2.40 / 0.094	11.20 / 0.441	4.40 / 0.173
HMP1340	12.70 ± 0.5 / 0.50 ± 0.02	13.00 ± 0.5 / 0.512 ± 0.02	4.00 / 0.157	2.40 / 0.094	11.20 / 0.411	4.40 / 0.173
HMP1345	12.70 ± 0.5 / 0.50 ± 0.02	13.00 ± 0.5 / 0.512 ± 0.02	4.50 / 0.177	2.40 / 0.094	11.20 / 0.411	4.40 / 0.173
HMP1348S	12.70 ± 0.5 / 0.50 ± 0.02	13.00 ± 0.5 / 0.512 ± 0.02	4.80 / 0.189	1.80 / 0.071	10.60 / 0.417	5.00 / 0.197

Electrical Characteristics : At 25°C: 100KHz, 1V

PART NO.	L ¹ (uH)	Li (uH) MIN	DCR (mΩ) MAX	I _{sat} ² (Adc)	I _{rms} ³ (Adc)
HMP1335-4R6LD	4.6	3.40	7.4	7.5	14.0
HMP1340-0R8	0.8	0.64	2.5	24.0	19.0
HMP1340-1R5	1.5	1.20	4.3	20.0	15.0
HMP1340-2R0	2.0	1.60	4.3	12.0	15.0
HMP1340-2R2	2.2	1.76	4.3	12.0	15.0
HMP1340-3R3	3.3	2.64	6.6	9.5	12.6
HMP1340-4R7	4.7	3.76	8.5	9.0	11.0
HMP1340-5R6	5.6	4.50	11.0	8.0	10.0
HMP1345-0R6	0.6	0.48	1.3	25.0	21.0
HMP1348S-0R4	0.4	0.32	0.9	36.0	39.0

1. Tolerance of inductance is ± 20%.
2. I_{sat} is the DC current which cause the inductance drop to Li.
3. I_{rms} is the DC current which cause the surface temperature of the part increase less than 45°C.
4. Operating temperature : -20°C to 105°C (including self-temperature rise).



DELTA ELECTRONICS, INC.

(TAOYUAN PLANT CPBG) 252, SAN YING ROAD, KUEISAN INDUSTRIAL ZONE, TAOYUAN SHIEN, 333, TAIWAN, R.O.C.

TEL: 886-3-3591968; FAX: 886-3-3591991

<http://www.deltaww.com>