

AC Filter

Standard- or Medical-Filter



Description

- Chassis:
Screw-on, from top
- Line filter in standard and medical version, 1-stage, standard attenuation
- Quick connect terminals 6.3 x 0.8 mm

Approvals

- VDE License Number: 40004673
- UL License Number: E72928

Characteristics

- Designed for standard applications
- Protection against interference voltage from the mains
Possible interferences generated in the equipment are strongly attenuated
- Universal line filter for standard applications
- Qualified for use in equipment according IEC/EN 60950

Other versions on request

- Version with wire connection
- Medical version M80
- Version with ZNR-varistor for overvoltage protection

References

[General Product Information](#)

Weblinks

[Approvals](#), [RoHS](#), [CHINA-RoHS](#), [e-Store](#), [SCHURTER-Stock-Check](#), [Distributor-Stock-Check](#)

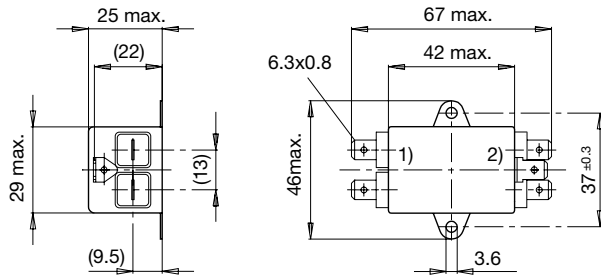
Technical Data

Ratings IEC	1 - 10A @ Ta 40 °C / 250VAC; 50Hz
Ratings UL/CSA	1 - 10A @ Ta 40 °C / 125VAC; 60Hz
Leakage Current	standard < 0.25 mA (250 V / 60Hz) medical < 5 µA (250 V / 60 Hz)
Dielectric Strength	> 1.7 kVDC between L-N > 2.7 kVDC between L/N-PE Test voltage (2 sec)
Allowable Operation Temp.	-25 °C to 100 °C
Climatic Category	25/100/21 acc. to IEC 60068-1
Protection Class	Suitable for appliances with protection class I acc. to IEC 61140
Terminal	Quick connect terminals 6.3 x 0.8 mm
Material: Housing	Aluminum

Line Filter	Standard and Medical Version, IEC 60939, IEC 60601-1, UL 1283, UL 544, EN 133 200, CSA C22.2 no. 8 Technical details
MTBF	> 200'000h acc. to MIL-HB-217 F

Dimensions

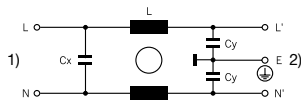
Case 41



- 1) Line
- 2) Load

Diagrams

Standard version



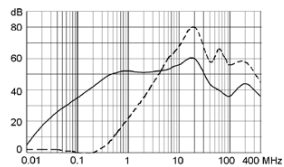
- 1) Line
- 2) Load

Attenuation Loss

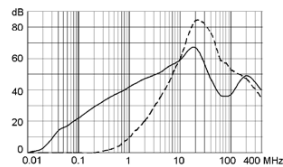
--- differential mode ____ common mode

Standard version

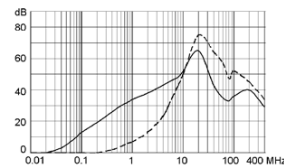
1 A



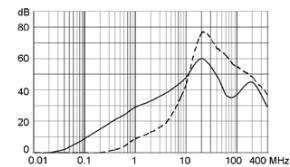
3 A



6 A

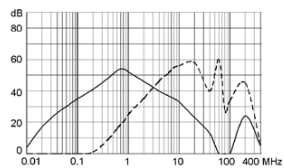


10 A

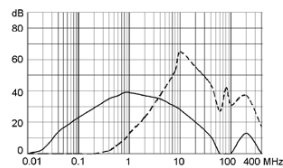


Medical version (M5)

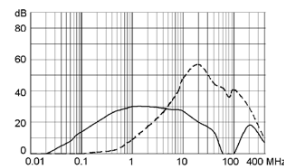
1 A



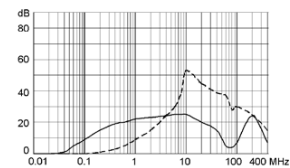
3 A



6 A



10 A



[Distributor-Stock-Check](#) | [SCHURTER-Stock-Check](#) | [e-Store](#)

Variants

Distributor-Stock-Check | SCHURTER-Stock-Check | e-Store

Rated Current [A]	Filter-Type	Leakage Current [mA]	L [mH]	Cx (X2) [nF]	Cy (Y2) [nF]	Weight [g]	Case	Order Number
1	Standard Version	0.25	2 x 10	15	2.2	55	41	5500.2039
3	Standard Version	0.25	2 x 2	15	2.2	55	41	5500.2040
6	Standard Version	0.25	2 x 0.8	15	2.2	55	41	5500.2041
10	Standard Version	0.25	2 x 0.4	15	2.2	55	41	5500.2042
1	Medical Version (M5)	0.005	2 x 10	15	-	55	41	5500.2098
3	Medical Version (M5)	0.005	2 x 2	15	-	55	41	5500.2104
6	Medical Version (M5)	0.005	2 x 0.8	15	-	55	41	5500.2100
10	Medical Version (M5)	0.005	2 x 0.4	15	-	55	41	5500.2102

Packaging unit 25 Pcs