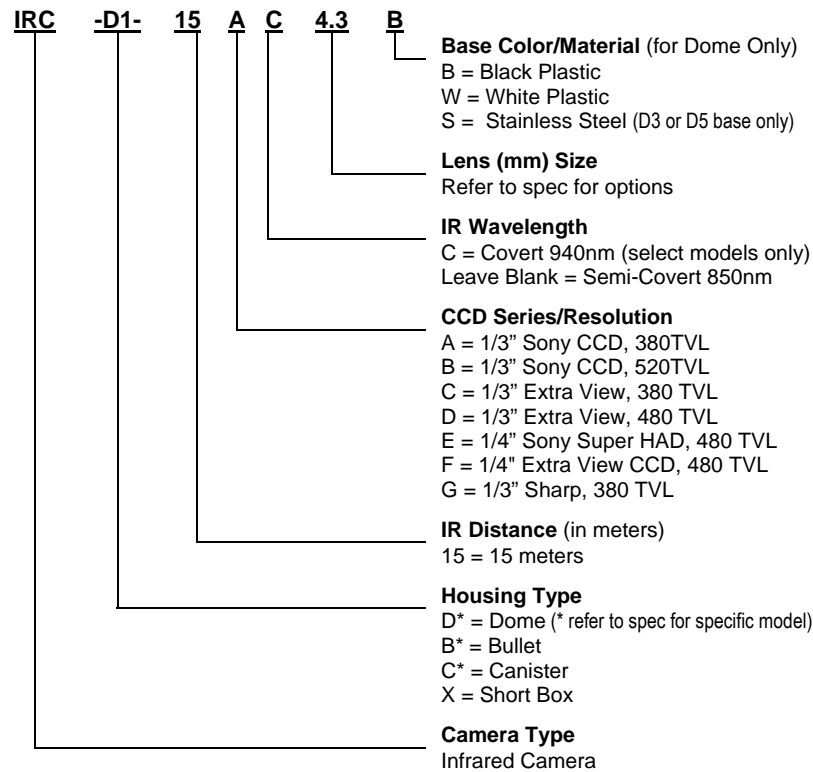


## Day/Night Infrared LED Camera – up to 164 Feet (50M)

Custom Solutions Available

### How to Order



### Overview

The IRC Series is designed for the professional security provider who requires an easy to install fixed camera that performs without compromise on a 24-7 Day/Night basis. It has a solid, all weather, and housing with a 6mm lens. It operates with low voltage, with solid state CCD technology and controlled regulated voltage.

### Features

- True Color in Daylight, Black/White at Night
- Illumination in low light conditions from IR
- View more than 98 feet (30m) in darkness
- High Resolution
- Low power consumption
- Fully weather-proof
- Medium band at 850nm
- 6mm standard Lens
- Dome, Bullet, Canister or Box Style Housing

### Applications

- Perimeter Surveillance
- Military Bases
- Parking lots
- Hi-End Residential
- Commercial Property
- Indoor / Outdoor

### General Specifications

Scanning System	NTSC: 525 lines, 2:1 interlace / PAL: 625 lines, 2:1 interlace
Scanning Frequency	NTSC: 15,734Hz (H), 60Hz (V) / PAL: 15,625Hz (H), 50Hz (V)
Electronic Shutter	NTSC: 1/60-100,000 sec / PAL: 1/50-100,000 sec.
Signal to Noise	More than 50dB (AGC off)
Gain Control	Automatic Gain Control (AGC)
With Balance	Auto ATW 2500-9500°K
Back Light Control	Automatic BLC
Gamma Correction	0.45
SYNC System	Internal
Video Output	Composite 1.0 Vp-p at 75 ohm

	IRC-D	IRC-B	IRC-X	IRC-C1-30 & IRC-C2-30	IRC-C3	IRC-C1-50, IRC-C2-50
IR Illuminator	6 LEDs	6 LEDs	12 LEDs	12 LEDs	8 LEDs	12 LEDs + condenser lens
Lens Size (mm)	4.3, 6, 8 opt	4.3, 6, 8 opt	4.3, 6, 8, 12 optional		4.3, 6, 8 opt	8, 12, 16 optional
IR View Angle	50° ~ 80°	50° ~ 80°	50° ~ 80°	50° ~ 80°	50° ~ 80°	50° ~ 80°
IR Beam Spread (per LED)	30°	30°	30°	30°	30°	30°

LED Material	AlGaInP type, High Performance, High-Light™ LEDs
LED Life	> 20,000 hours
IR Wavelength	850nm and 940nm for selected models
IR Status	< 10 Lux with auto switching CDS Sensor

### Dome Housing Options



IRC-D1-15



IRC-D2-15



IRC-D3-15



IRC-D4-15



IRC-D5-15

### ■ 49' DISTANCE (15M)

### Specifications

Model Series	IRC-D*-15A	IRC-D*-15B	IRC-D*15B	IRC-D15C	IRC-15D	
Dome Base Shapes (*)	D1, D2, D3	D1, D3, D4, D5	D5	D1, D2	D1, D2	
Horizontal Resolution	380 TV Lines	520 TV Lines	520 TV Lines	380 TVL	480 TVL	
Image Device	1/3" Sony CCD	1/3" Sony CCD	1/3" Sony CCD	1/3" Extra View	1/3" Extra View	
Effective Pixels (HxV)	NTSC	537 x 505	811 x 508	771 x 492	537 x 505	811 x 508
	PAL	537 x 597	795 x 596	753 x 582	537 x 597	795 x 596
Sensitivity (IR Off/ IR On)	0.05 lux / 0 lux	0.06 lux / 0 lux	0.06 lux / 0 lux	0.01 lux / 0 lux	0.05 lux / 0 lux	
Lens (mm)	4.3 (6 or 8 opt)	4.3 (6 or 8 opt)	3.8 (opt)	4.3 (6 or 8 opt)	4.3 (6 or 8 opt)	

### Physical/Environmental Characteristics

Model Series by Shape	IRC-D1-15	IRC-D2-15	IRC-D3-15	IRC-D4-15	IRC-D5-15
Dimensions (mm)	80 (Φ) x 80 (H) x 98 (D)	80 (Φ) x 80 (H) x 98 (D)	108 (Φ) x 75 (H)	118(Φ) x118 (H) x 80 (D)	118 (Φ) x 76 (H)
Weight	175g	175g	530g	480g	830g
Power Consumption	IR on	280mA	280mA	280mA	280mA
	IR off	100mA	100mA	100mA	100mA
Power Supply	12V DC	12V DC	12V DC	12V DC	12V DC
Base Material	Plastic	Plastic	Stainless Steel	Stainless Steel	Stainless Steel
Vandal Protection	Resistant	Resistant	Resistant	Vandal Proof	Vandal Proof
Heat Dissipation	Special metal board device				
Protection Class	IP 66 classification				
Operating Temperature	-4°F ~ 122°F / -20°C ~ 50°C				
Storage Temperature	-4°F ~ 140°F / -30°C ~ 60°C, Humidity 0 ~ 95% RH				

### Other Housing Options



IRC-B1 series



IRC-B2 series



IRC-C1 series



IRC-C2 series



IRC-C3 series



IRC-X series

### ■ 33' - 49' DISTANCE (10M-15M) Available in 850nm and 940nm

#### Specifications

Model Numbers	IRC-B1-15A	IRC-B1-15C	IRC-B1-15G	IRC-B1-15B	IRC-B1-15D
	IRC-B2-15A	IRC-B2-15C	IRC-B2-15G	IRC-B2-15B	IRC-B2-15D
Horizontal Resolution	380 TV Lines	380 TV Lines	380 TV Lines	520 TV Lines	480 TV Lines
Image Device	1/3" Sony CCD	1/3" Extra-View CCD	1/3" Sharp CCD	1/3" Sony CCD	1/3" Extra-View CCD
Effective Pixels (HxV)	NTSC	537 x 505	537 x 505	542 x 492	811 x 508
	PAL	537 x 597	537 x 597	542 x 582	795 x 596
Sensitivity (IR Off/ IR On)	0.05 lux / 0 lux	0.01 lux / 0 lux	0.10 lux / 0 lux	0.06 lux / 0 lux	0.05 lux / 0 lux

### ■ 66' - 82' DISTANCE (20M-25M) Available in 850nm and 940nm

#### Specifications

Model Numbers	IRC-C3-25A	IRC-C3-25G
Horizontal Resolution	380 TV Lines	380 TV Lines
Image Device	1/3" Sony CCD	1/3" Sharp CCD
Effective Pixels (HxV)	NTSC	537 x 505
	PAL	537 x 597
Sensitivity (IR Off/ IR On)	0.05 lux / 0 lux	0.10 lux / 0 lux

### ■ 114' DISTANCE (35M)

#### Specifications

IRC-X-35A	IRC-X-35B
380 TV Lines	520TV lines
1/3" Sony CCD	1/3" Sony CCD
537 x 505	771 x 492
537 x 597	753 x 582
0.05 lux / 0 lux	0.06 lx / IR 0 lx

### ■ 98' - 114' DISTANCE (30M-35M)

#### Specifications

Model Number	IRC-C1-30A	IRC-C1-30C	IRC-C1-30G	IRC-C1-30B	IRC-C1-30D
	IRC-C2-30A	IRC-C2-30C	IRC-C2-30G	IRC-C2-30B	IRC-C2-30D
Horizontal Resolution	380 TV Lines	380 TV Lines	380 TV Lines	520TV lines	480TV lines
Image Device	1/3" Sony CCD	1/3" Extra-View CCD	1/3" Sharp CCD	1/3" Sony CCD	1/3" Extra-View CCD
Effective Pixels (HxV)	NTSC	537 x 505	537 x 505	537 x 505	771 x 492
	PAL	537 x 597	537 x 597	537 x 597	753 x 582
Sensitivity (IR Off/ IR On)	0.05 lx / IR 0 lx	0.01 lx / IR 0 lx	0.1 lx / IR 0 lx	0.06 lx / IR 0 lx	0.05 lx / IR 0 lx

### ■ 164' DISTANCE (50M)

#### Specifications

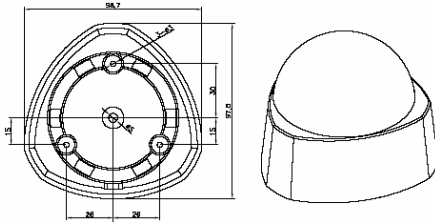
Model Numbers	IRC-C1-50A	IRC-C1-50C	IRC-C1-50B	IRC-C1-50D
	IRC-C2-50A	IRC-C2-50C	IRC-C2-50B	IRC-C2-50D
Horizontal Resolution	380 TV Lines	380 TV Lines	520 TV Lines	480 TV Lines
Image Device	1/3" Sony CCD	1/3" Extra-View CCD	1/3" Sony CCD	1/3" Extra-View CCD
Effective Pixels (HxV)	NTSC	537 x 505	537 x 505	811 x 508
	PAL	537 x 597	537 x 597	795 x 596
Sensitivity (IR Off/ IR On)	0.05 lux / 0 lux	0.01 lux / 0 lux	0.06 lux / 0 lux	0.05 lux / 0 lux

#### Physical/Environmental Characteristics

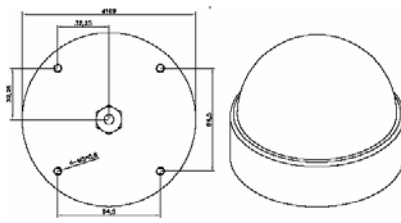
Model Series	IRC-B2	IRC-B1	IRC-C3	IRC-C2	IRC-C1	IRC-X
Dimensions (mm)	60(Φ) x 100 (L)	85(Φ) x 110 (L)	95 (Φ) x 150 (L)	95 (Φ) x 150 (L)	95 (Φ) x 250 (L)	112 (W) x 178.9 (H) x 250 (L)
Weight	1.01 lbs / 0.46 kg	1.10 lbs / 0.5 kg	1.54 lbs / 0.7 kg	1.54 lbs / 0.7 kg	2.91 lbs / 1.32 kg	3.31 lbs / 1.5 kg
Power Consumption	IR on	280mA	280mA	280mA	460mA	460mA
	IR off	100mA	100mA	100mA	100mA	100mA
Power Supply	12V DC	12V DC	12V DC	12V DC / 24V AC/ 85~260V AC		
Construction	Aluminum with sunshield weatherproof					
Heat Dissipation	Special metal board device					
Protection Class	IP 66 classification					(IRC-X is vandal proof)
Operating Temperature	-4°F ~ 122°F / -20°C ~ 50°C					
Storage Temperature	-4°F ~ 140°F / -30°C ~ 60°C, Humidity 0 ~ 95% RH					

### HOUSING SCHEMATICS

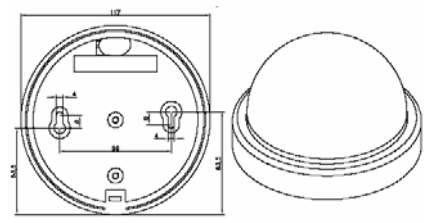
#### Dome



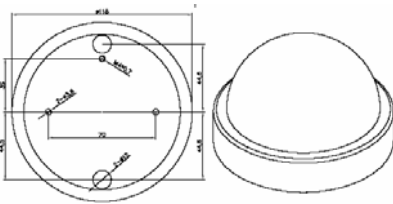
IRC-D1



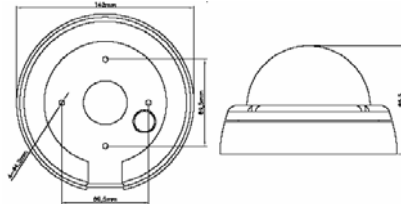
IRC-D2



IRC-D3

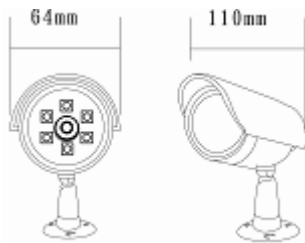


IRC-D4

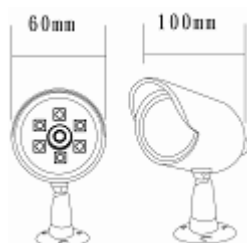


IRC-D5

#### Bullet

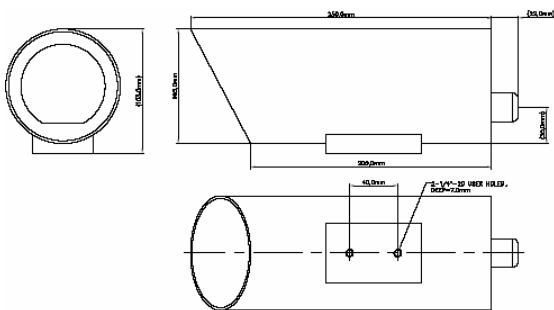


IRC-B1

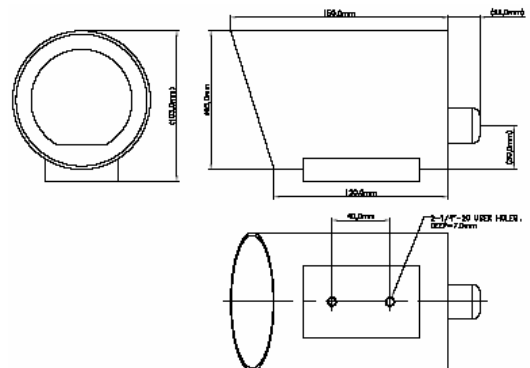


IRC-B2

#### Canister



IRC-C1



IRC-C2 & IRC-C3