

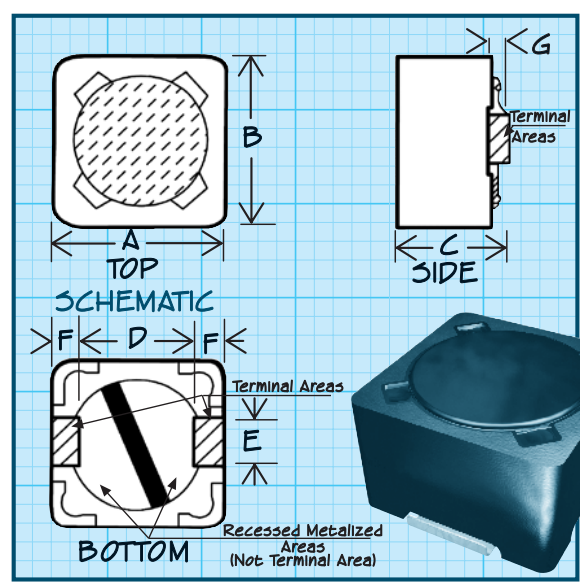
Series SPD73R & SPD74R SPD73 & SPD74

ROHS
Compliant

Traditional
First Quality

Shielded Surface Mount Inductors

POWER INDUCTORS



Physical Parameters

	Inches	Millimeters
A	0.287 ± 0.020	7.3 ± 0.5
B	0.287 ± 0.020	7.3 ± 0.5
C	0.185 max.	4.7 max. (Series SPD74)
C	0.153 max.	3.9 max. (Series SPD73)
D	0.200 ± 0.020	5.0 ± 0.5
E	0.088 ± 0.020	2.2 ± 0.5
F	0.042 ± 0.020	1.0 ± 0.5
G	0.015 Ref. only	0.38 Ref. only

Mechanical Configuration Units designed for surface mounting; ferrite core and ferrite sleeve

Terminals are Solderable More than 95% new solder coverage when subjected to soldering temperature

Operating temperature range -55°C to +125°C

Application Frequency Range
Values 1.2µH-to-10µH to 1.0 MHz Min.
Values above 10µH to 300 KHz Min.

Current Rating at 25°C Ambient The maximum DC current that will cause a 40°C maximum temperature rise and where the inductance will not decrease by more than 10% from its zero DC value

Packaging Tape & reel (16 mm):
13" reel, 1000 pieces max.; 7" reel not available

DASH NUMBER*
INDUCTANCE (µH) ± 20%
TEST FREQUENCY (KHz)
DC RESISTANCE MAXIMUM (Ohms)
CURRENT RATING MAXIMUM (amps)

SERIES SPD73				
-122M	1.2	100	0.02	5.30
-242M	2.4	100	0.032	4.50
-352M	3.5	100	0.035	4.00
-472M	4.7	100	0.050	3.50
-682M	6.8	100	0.065	3.00
-103M	10	100	0.067	2.50
-123M	12	1.0	0.080	2.25
-153M	15	1.0	0.091	2.00
-183M	18	1.0	0.14	1.80
-223M	22	1.0	0.19	1.75
-273M	27	1.0	0.21	1.60
-333M	33	1.0	0.24	1.35
-393M	39	1.0	0.32	1.25
-473M	47	1.0	0.36	1.16
-563M	56	1.0	0.47	1.10
-683M	68	1.0	0.52	1.05
-823M	82	1.0	0.69	0.95
-104M	100	1.0	0.79	0.85
-124M	120	1.0	0.84	0.80
-154M	150	1.0	0.89	0.70
-184M	180	1.0	1.45	0.62
-224M	220	1.0	1.65	0.57
-274M	270	1.0	2.31	0.52
-334M	330	1.0	2.62	0.50
-394M	390	1.0	2.94	0.48
-474M	470	1.0	4.18	0.38
-564M	560	1.0	4.67	0.35
-684M	680	1.0	5.73	0.31
-824M	820	1.0	6.54	0.30
-105M	1000	1.0	9.44	0.26

SERIES SPD74				
-122M	1.2	100	0.025	4.40
-242M	2.4	100	0.03	4.00
-352M	3.5	100	0.034	3.70
-472M	4.7	100	0.038	3.50
-682M	6.8	100	0.042	3.40
-103M	10	100	0.049	3.20
-123M	12	1.0	0.038	2.80
-153M	15	1.0	0.081	2.40
-183M	18	1.0	0.091	2.30
-223M	22	1.0	0.11	2.00
-273M	27	1.0	0.15	1.70
-333M	33	1.0	0.17	1.60
-393M	39	1.0	0.23	1.40
-473M	47	1.0	0.26	1.30
-563M	56	1.0	0.35	1.10
-683M	68	1.0	0.38	1.05
-823M	82	1.0	0.43	1.00
-104M	100	1.0	0.61	0.86
-124M	120	1.0	0.66	0.84
-154M	150	1.0	0.88	0.70
-184M	180	1.0	0.98	0.68
-224M	220	1.0	1.17	0.60
-274M	270	1.0	1.64	0.53
-334M	330	1.0	1.86	0.50
-394M	390	1.0	2.85	0.40
-474M	470	1.0	3.01	0.39
-564M	560	1.0	3.62	0.36
-684M	680	1.0	4.63	0.32
-824M	820	1.0	5.2	0.30
-105M	1000	1.0	6.0	0.28

*Complete part # must include series # PLUS the dash #

For further surface finish information, refer to TECHNICAL section of this catalog.