

COMMON MODE CHOKE

STF0402 SERIES

1. PART NO. EXPRESSION :

STF0402100YZF
 (a) (b) (c) (d)(e)(f)

(a) Series code

(b) Dimension code

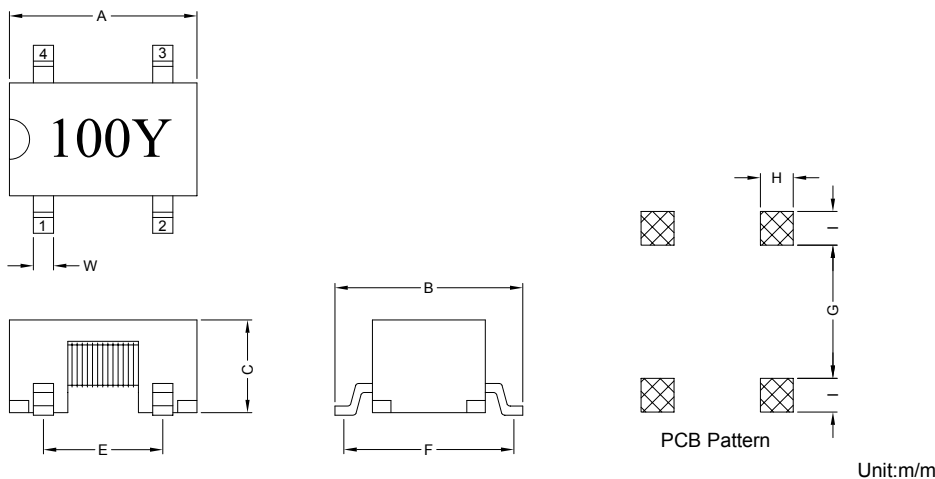
(c) Inductance code : 100 = 10.0uH

(d) Tolerance code : Y = ±40%

(e) X, Y, Z : Standard part

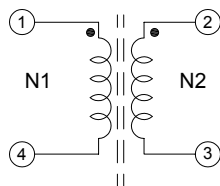
(f) F : Lead Free

2. CONFIGURATION & DIMENSIONS :



A	B	C	E	F	G	H	I	W
4.60±0.3	5.00±0.3	2.50±0.3	3.00±0.3	4.60±0.3	3.40 Ref.	0.80 Ref.	1.20 Ref.	0.50±0.1

3. SCHEMATIC :



"●": Polarity



RoHS Compliant

NOTE : Specifications subject to change without notice. Please check our website for latest information.

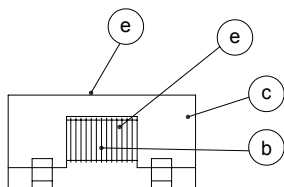
09.05.2008



SUPERWORLD ELECTRONICS (S) PTE LTD

PG. 1

4. MATERIALS :



- (a) Core : Ferrite Core
- (b) Wire : Enamelled Copper Wire
- (c) Base : Phenolic
- (d) Adhesive : Epoxy
- (e) Ink : Bon Margue

5. GENERAL SPECIFICATION :

- a) Temp. rise : 45°C Max. at rated current
- b) Storage temp. : -40°C to +125°C
- c) Operating temp. : -40°C to +80°C
- d) Resistance to solder heat : 260°C. 10secs

6. ELECTRICAL CHARACTERISTICS :

Part No.	Inductance L1 , L2 (μH)	DC Resistance N1 , N2 (Ω)	Rated Current (A)	Impedance (Ω)	Frequency Range (MHz)
STF0402100YZF	10.0±40%	0.035 Max.	1.40	80 Min.	10 ~ 1000
STF0402400YZF	40.0±40%	0.070 Max.	1.25	250 Min.	5 ~ 500
STF0402850YZF	85.0±40%	0.135 Max.	0.90	400 Min.	3 ~ 300
STF0402151YZF	150.0±40%	0.220 Max.	0.50	600 Min.	2 ~ 100
STF0402221YZF	220.0±40%	0.350 Max.	0.45	800 Min.	1 ~ 50

* Hi-Pot Test (N1-N2) : 500VAC 60Hz 3mA 1 Minute



RoHS Compliant

NOTE : Specifications subject to change without notice. Please check our website for latest information.

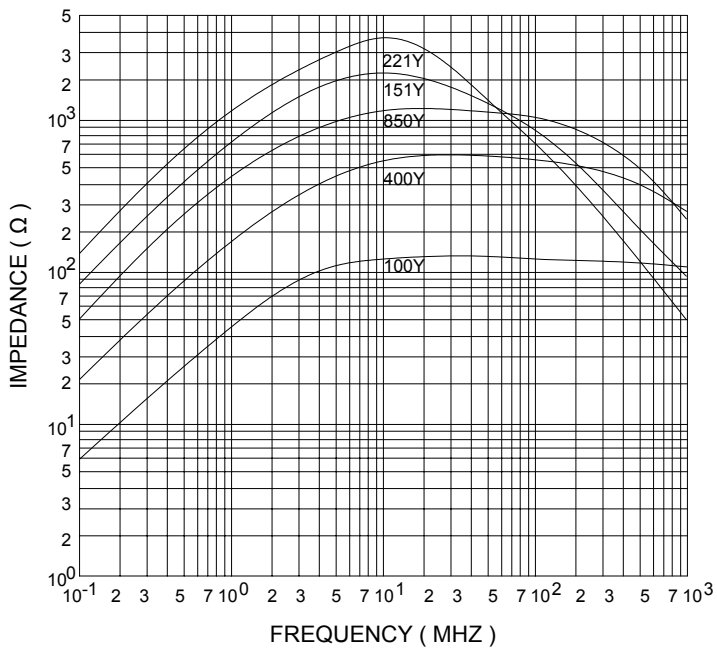
09.05.2008



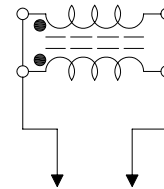
SUPERWORLD ELECTRONICS (S) PTE LTD

PG. 2

7. IMPEDANCE VS. FREQUENCY :



Measuring Circuit :



RF Impedance Analyzer



RoHS Compliant

NOTE : Specifications subject to change without notice. Please check our website for latest information.

09.05.2008

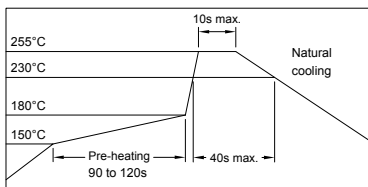


SUPERWORLD ELECTRONICS (S) PTE LTD

COMMON MODE CHOKE

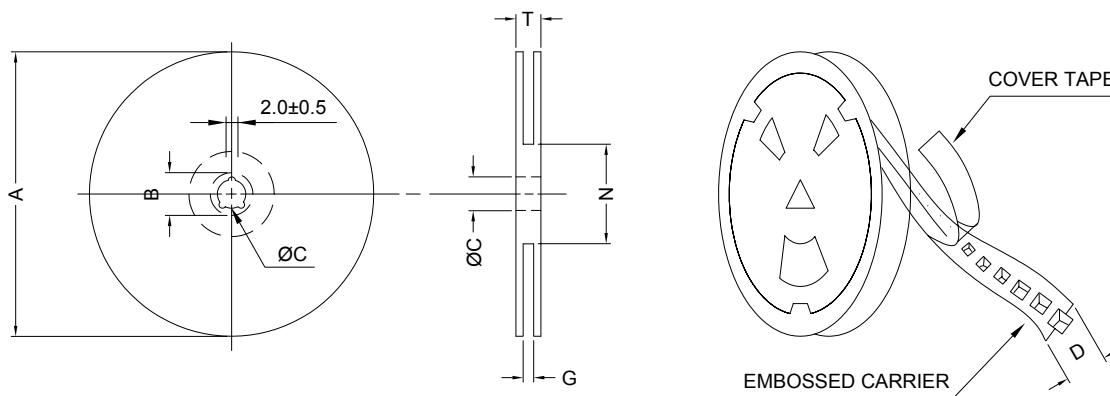
STF0402 SERIES

RECOMMENDED SOLDERING CONDITIONS REFLOW SOLDERINGS

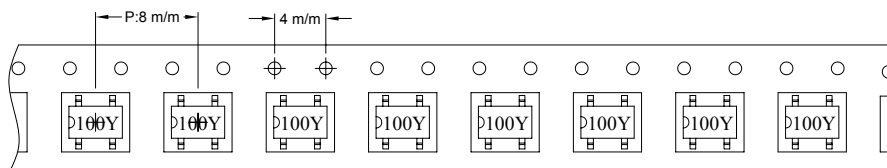


8. PACKAGING INFORMATION :

(1) CONFIGURATION



* CARRIER TAPE WIDTH : D



(2) DIMENSIONS

Unit:m/m

STYLE	A	B	C	D	G	N	T
13-16	330	21±0.8	13	16	18 ⁺⁰	50 ⁻⁰	22.4

(3) Q'TY & G.W. PER PACKAGE

SERIES	INNER : REEL			OUTER : CARTON		
	Q'TY (PCS)	G.W. (gw)	STYLE	Q'TY (PCS)	G.W. (Kg)	SIZE (cm)
STF0402	2000	600	13-16	12000	7.1	40 x 40 x 24



RoHS Compliant

NOTE : Specifications subject to change without notice. Please check our website for latest information.

09.05.2008

 **SUPERWORLD ELECTRONICS (S) PTE LTD**

9. RELIABILITY AND TEST CONDITION :

TEST ITEM	SPECIFICATION	TEST CONDITION
SOLDERABILITY	MORE THAN 90% OF THE TERMINAL ELECTRODE SHALL BE COVERED WITH FRESH SOLDER.	PREHEAT : 125±25°C FOR 60 SECONDS SOLDER : 99%Sn/0.3%Ag/0.7%Cu OR EQUIVALENT SOLDER TEMP. : 245±5°C FLUX : ROSIN DIP TIME : 4±1 SECONDS
THERMAL SHOCK TEST (TEMP. CYCLE)	INDUCTANCE SHALL NOT CHANGE MORE THAN ±20%	ROOM TEMP. → -25±2°C 15 MINUTES 30 MINUTES
		ROOM TEMP. → 85±2°C 15 MINUTES 30 MINUTES
		TOTAL : 50 CYCLES
HUMIDITY RESISTANCE TEST		TEMPERATURE : 40±2°C HUMIDITY : 90 ~ 95% APPLIED CURRENT : PER SPEC. TIME : 500 HOURS
HIGH TEMP. RESISTANCE TEST		TEMPERATURE : 85±2°C APPLIED CURRENT : PER SPEC. TIME : 500 HOURS



RoHS Compliant

NOTE : Specifications subject to change without notice. Please check our website for latest information.

09.05.2008



SUPERWORLD ELECTRONICS (S) PTE LTD

PG. 5

COMMON MODE CHOKE

STF0402 SERIES

10. UL CARD :

OBMW2 **November 30, 2000**
Magnet Wire - Component
PACIFIC ELECTRIC WIRE & CABLE (SHENZHEN) CO LTD **E201757**
 607 BAOLONG INDUSTRIAL ESTATE LONGGANG, SHENZHEN
 GUANGDONG CHINA

Mtl Dsg	Coating Type	TC	ANSI Type	TI
UEW/U	BC Polyurethane	—	—	130
PEW/U	Polyester	—	MW5-C	155°C
PEWH/U	Modified Polyester	—	MW30-C	180
PEW-NY/U	Polyester	Polyamide	MW24-C	155
HAI/U	Polyester(Amide)(Imide)	Polyamideimide	MW35,73	200
UEW-NY/U	Polyurethane	Polyamide	MW80-C	155
			MW28-C	130

Marking: Company name and material designation or marked designation on package or reel, and Recognized Component Mark.

See General Information Preceding These Recognitions

1/3/2001 Underwriters Laboratories Inc. Card 1 of 2

QMFZ2 **January 15, 1991**
Component-Plastics
SUMITOMO BAKELITE CO LTD **E41429 (M)**
(11-cont. from I card)

PM-9630	BK	0.40	94V-0	150	150	150	—	—	—	—	—
		0.51	94V-0	150	150	150	0	0	—	—	—
		3.18	94V-0	150	150	150	0	1	0	4	3
PM-8315	BK	0.50	94V-0	150	150	150	3	0	0	—	—
PM-8315J	BN	0.71	94V-0	150	150	150	2	0	0	—	—
		1.47	94V-0	150	150	150	0	2	0	—	—
		3.05	94V-0	150	150	150	0	1	0	5	4
		6.10	94V-0	150	150	150	0	1	0	5	4
PM-8315K	BK	0.78	94V-1	150	150	150	—	—	—	—	—
		1.52	94V-0	150	150	150	—	—	—	—	—
PM-8320J	BK	0.71	94HB	150	150	150	—	—	—	—	—
PM-8330	BK	0.71	94V-1	150	150	150	—	—	—	—	—
		1.57	94V-0	150	150	150	—	—	—	—	—
PM-8400	BK	0.71	94HB	150	150	150	—	—	—	—	—
PM-9830	BK	0.69	94V-0	150	150	150	0	0	—	—	—
		3.18	94V-0	150	150	150	0	0	0	4	3

Reports: March 29, 1985: May 14, 1974: September 16, 1971: September 16, 1971:
 September 16, 1971: September 16, 1971: March 29, 1985.

Replaces E4142911 dated February 28, 1990. **(Cont. on J card)**
683540014 N7047 Underwriters Laboratories Inc. ® **D11/0043416**



RoHS Compliant

NOTE : Specifications subject to change without notice. Please check our website for latest information.

09.05.2008



SUPERWORLD ELECTRONICS (S) PTE LTD

PG. 6