



American Opto Plus LED

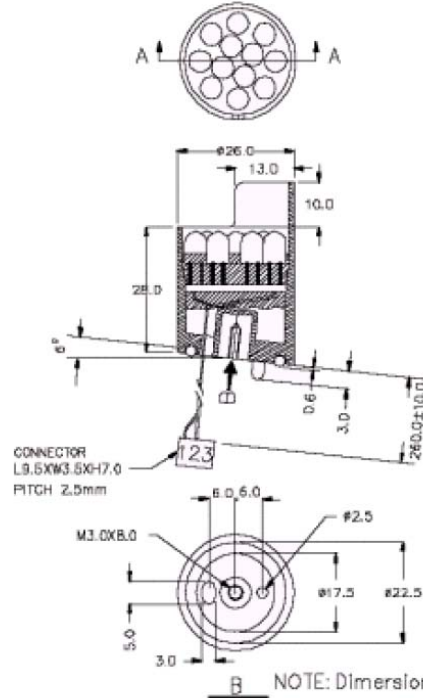
AOP-M26123NYC-24V

5mm Dia LED LAMP -WATER CLEAR

(AlInGaP AS Yellow)

MAIN FEATURES
1' LED CLUSTER
High Visibility Outdoor Applications
LOW POWER CONSUMPTION

PACKAGE DIMENSIONS



Internal Equivalent Circuit

Super Bright Yellow



OPTICAL-ELECTRICAL CHARACTERISTICS

PARAMETER	SYMBOL	TEST CONDITION	MIN	TYP	MAX	UNIT
Luminous Intensity	I_V	$I_F = 20\text{mA}$	48000	72000		mcd
Forward Voltage	V_F	$I_F = 20\text{mA}$		24		V
Reverse Current	I_R	$V_R = 5\text{V}$			10	μA
Viewing Angle	$2\theta_{1/2}$	$I_F = 20\text{mA}$		30		deg.
Peak Wavelength	λ_P	$I_F = 20\text{mA}$	590	592	596	nm
Dominant Wavelength	λ_D	$I_F = 20\text{mA}$		590		nm
Spectrum Radiation Bandwidth	$\Delta\lambda$	$I_F = 20\text{mA}$		20		nm



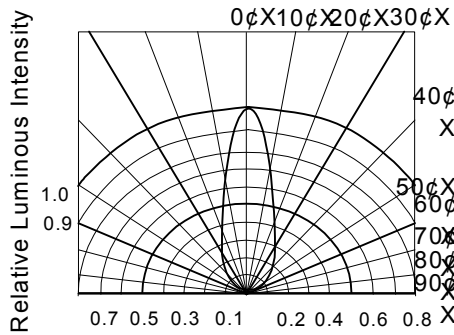
American Opto Plus LED

AOP-M26123NYC-24V

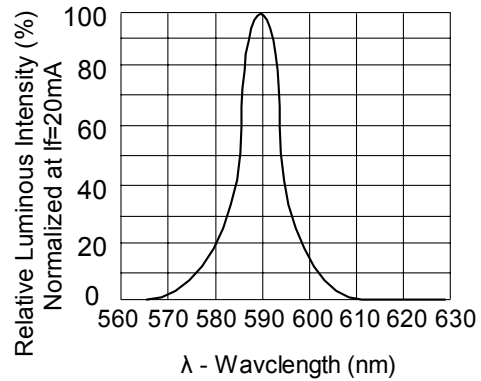
5mm Dia LED LAMP -WATER CLEAR
(AlInGaP AS Yellow)

- MAIN FEATURES**
- 1' LED CLUSTER
 - High Visibility Outdoor Applications
 - LOW POWER CONSUMPTION

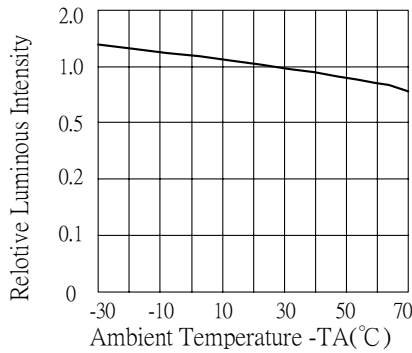
TYPICAL OPTICAL-ELECTRICAL CHARACTERISTIC CURVES



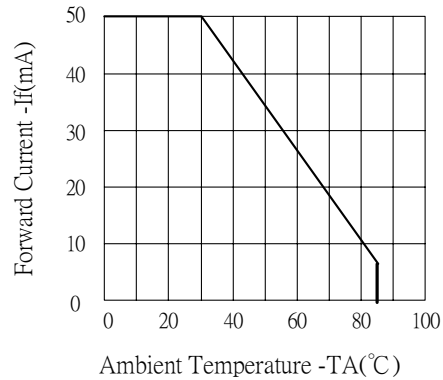
RADIATION DIAGRAM



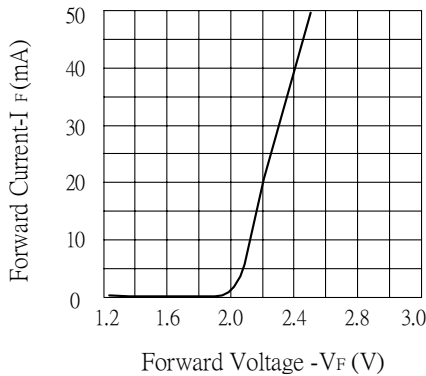
**RELATIVE LUMINOUS INTENSITY
Vs. WAVELENGTH**



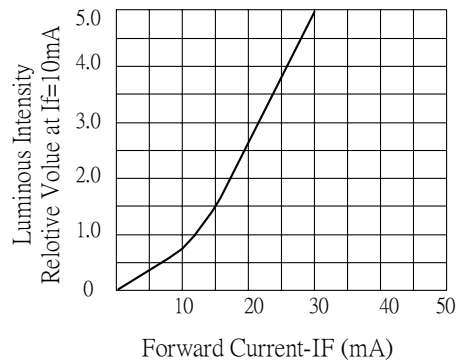
**LUMINOUS INTENSITY
Vs. AMBIENT TEMPERATURE**



**FORWARD CURRENT
Vs. AMBIENT TEMPERATURE**



**FORWARD CURRENT (EACH LED)
Vs. FORWARD VOLTAGE**



**LUMINOUS INTENSITY
Vs. FORWARD CURRENT**