



American Opto Plus LED

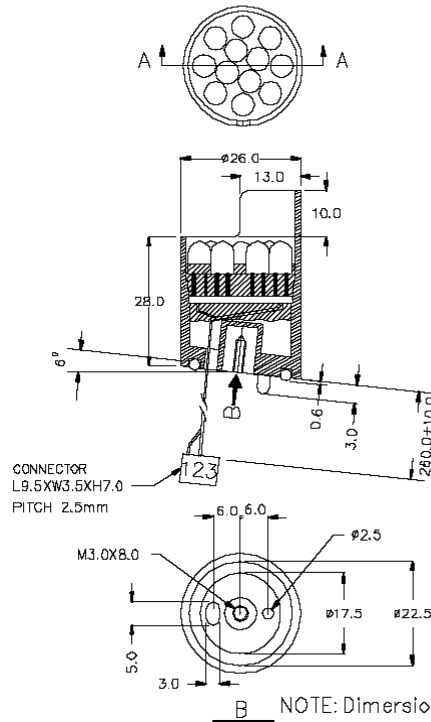
AOP-M26123QEC-24V

5mm Dia LED LAMP -WATER CLEAR

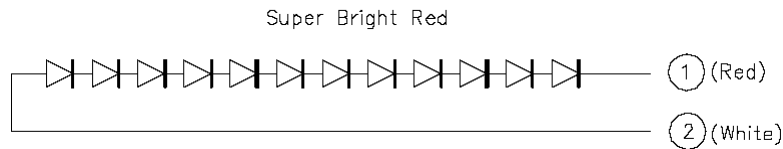
(AlInGaP AS Red)

MAIN FEATURES
1' LED CLUSTER
High Visibility Outdoor Applications
LOW POWER CONSUMPTION

Mechanical Dimensions



Internal Equivalent Circuit



OPTICAL-ELECTRICAL CHARACTERISTICS

PARAMETER	SYMBOL	TEST CONDITION	MIN	TYP	MAX	UNIT
Luminous Intensity	I_V	$I_F = 20\text{mA}$	45000	60000		mcd
Forward Voltage	V_F	$I_F = 20\text{mA}$		24		V
Reverse Current	I_R	$V_R = 5\text{V}$			10	μA
Viewing Angle	$2\theta_{1/2}$	$I_F = 20\text{mA}$		30		deg.
Peak Wavelength	λ_P	$I_F = 20\text{mA}$	625	630		nm
Dominant Wavelength	λ_D	$I_F = 20\text{mA}$		629		nm
Spectrum Radiation Bandwidth	$\Delta\lambda$	$I_F = 20\text{mA}$		20		nm



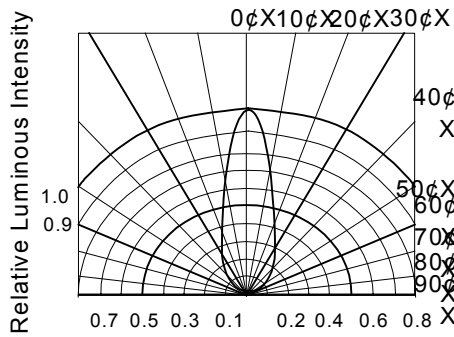
American Opto Plus LED

AOP-M26123QEC-24V

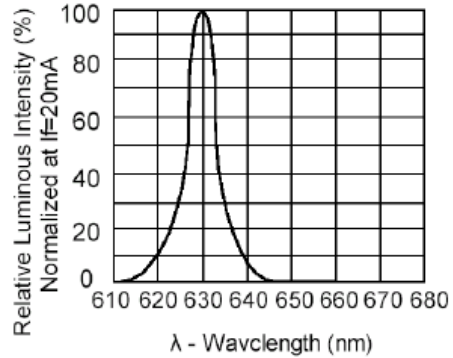
5mm Dia LED LAMP -WATER CLEAR
(AlInGaP AS Yellow)

MAIN FEATURES
1' LED CLUSTER
High Visibility Outdoor Applications
LOW POWER CONSUMPTION

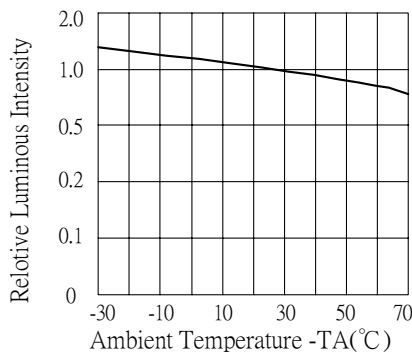
TYPICAL OPTICAL-ELECTRICAL CHARACTERISTIC CURVES



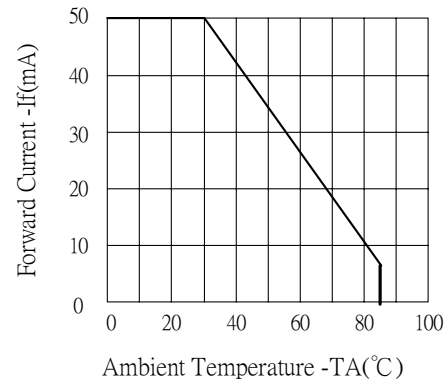
RADIATION DIAGRAM



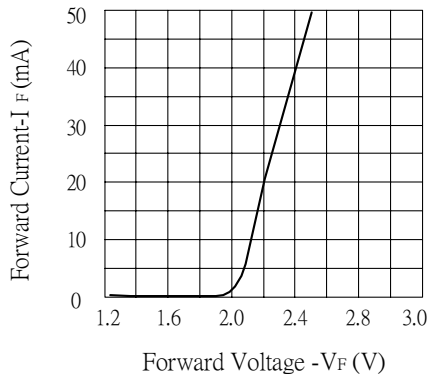
RELATIVE LUMINOUS INTENSITY Vs. WAVELENGTH



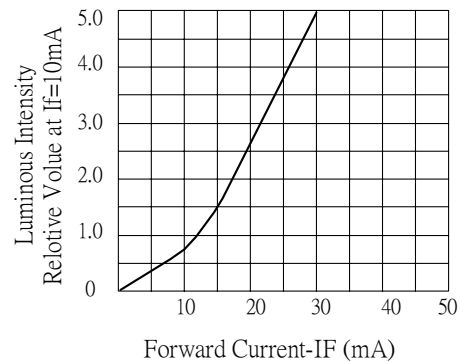
LUMINOUS INTENSITY Vs. AMBIENT TEMPERATURE



FORWARD CURRENT Vs. AMBIENT TEMPERATURE



FORWARD CURRENT (EACH LED) Vs. FORWARD VOLTAGE



LUMINOUS INTENSITY Vs. FORWARD CURRENT