

SMT Power Inductor (MOLDING TYPE)

MPF1036 Type

Features

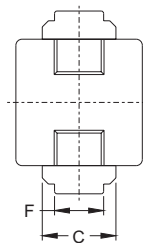
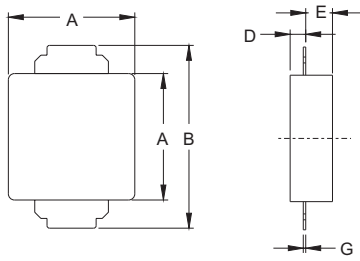
- RoHS compliant.
- Low profile, high current SMD type.
- Frequency range up to 1MHz.
- Lowest DCR/ μ H, in this package size.
- Low buzz noise due to its gap-less structure.

Applications

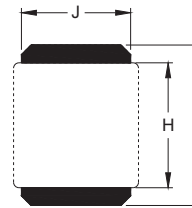
- Notebook/Desktop/Server/Video Card applications.
- High current POL converters.
- Low profile, high current power supplies.
- Battery powered devices.
- Ideal for power source circuits, DC-DC converter.
- DC-AC inverters inductor application.



Mechanical Dimension:



RECOMMENDED PAD PATTERNS



UNIT : mm/inch
 A = 10.15~10.45 / 0.400~0.411
 B = 14.4±0.30 / 0.567±0.012
 C = 6.0±0.30 / 0.236±0.012
 D = 1.5 / 0.060 Max.
 E = 2.30 / 0.091 Max.
 F = 4.0±0.30 / 0.157±0.012
 G = 0.25±0.05 / 0.010±0.002
 H = 11.62 / 0.458
 I = 14.93 / 0.588
 J = 10.16 / 0.330

Electrical Characteristics: At 25°C: 100KHz, 0.25V

PART NO.	L0 (μ H)	DCR ($m\Omega$) TYP.	DCR ($m\Omega$) MAX.	Isat ¹ (A dc)	Ir ² (A dc)
MPF1036R56M1	0.56 ± 20%	2.15	2.45	39	25.0
MPF1036R68M1	0.68 ± 20%	2.40	2.80	35	23.5
MPF10361R0M1	1.00 ± 20%	3.60	4.00	25	20.0

1. Isat is the DC current which cause the inductance drop approximately 20% of its nominal inductance without current.
2. Ir is the DC current which cause the surface temperature of the part increase approximately 40°C
3. Operating temperature range : -55°C to 125°C
4. Ambient temperature, Maximum : 85°C.



DELTA ELECTRONICS, INC.

(TAOYUAN PLANT CPBG) 252, SAN YING ROAD, KUEISAN INDUSTRIAL ZONE, TAOYUAN SHIEN, 333, TAIWAN, R.O.C.

TEL: 886-3-3591968; FAX: 886-3-3591991

<http://www.deltaww.com>