

Storage Choke, flat design

**Description**

- Storage choke
- THT-terminals
- Inductor horizontally positioned in housing
- Constant inductance at high alternating field modulation and large DC magnetization
- Reduced magnetic reversal
- SMD version on request

Standards

- EN 60938

Applications

- Storage of energy in switched power supplies
- Switch-mode
- Chopper amplifiers
- DC drives and stepper motor controls

References

[General Product Information](#)

Weblinks

[Approvals](#), [RoHS](#), [CHINA-RoHS](#), [e-Store](#), [SCHURTER-Stock-Check](#), [Distributor-Stock-Check](#)

Technical Data

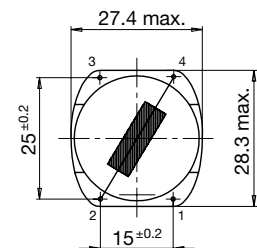
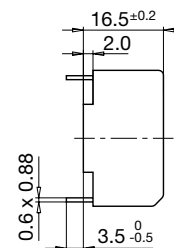
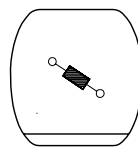
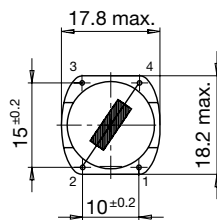
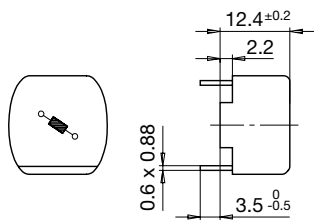
| | |
|---------------------------|---------------------------|
| Rated Voltage | up to 600 VDC |
| Rated Current | 0.4 - 6.3A @ Ta 70 °C |
| Rated inductance | 0.011 - 3.7 mH, Tol. ±15% |
| Power Operating Frequency | up to 1MHz |
| Terminal technic | THT |
| Weight | 7 - 18g |
| Material: Housing | UL 94V-0 |
| Sealing Compound | UL 94V-0 |

| | |
|---------------------------|-------------------------------|
| Isolation Voltage | 2kV eff., winding to ambient |
| Climatic Category | 40/125/21 acc. to IEC 60068-1 |
| Allowable Operation Temp. | -40 °C to 125 °C |

Dimensions

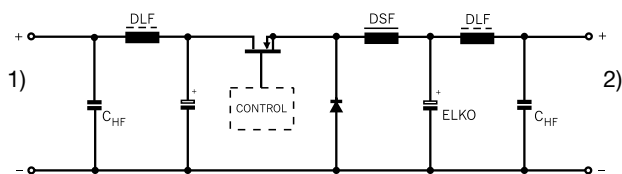
Case 04-1

Case 15-1



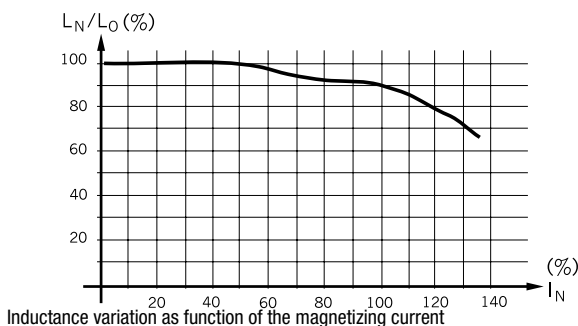
Diagrams

Application in DC-DC Converter



- 1) DC-Input unregulated
- 2) DC-Output regulated

Derating Curves



Variants

[Distributor-Stock-Check](#) | [SCHURTER-Stock-Check](#) | [e-Store](#)

| I_n [A] | L_n [mH] | R_{cu} [mΩ] | f_{RES} [MHz] | Weight [g] | Case | Packing unit [pcs.] | Order Number |
|-----------|------------|---------------|-----------------|------------|------|---------------------|--------------|
| 0.4 | 1.1 | 700 | - | 7 | 04-1 | 45 | DSF-18-0001 |
| 0.6 | 0.5 | 360 | 2.5 | 7 | 04-1 | 45 | DSF-18-0002 |
| 1.2 | 0.125 | 90 | 6.5 | 7 | 04-1 | 45 | DSF-18-0003 |
| 2 | 0.045 | 32 | 12 | 7 | 04-1 | 45 | DSF-18-0005 |
| 4 | 0.011 | 8 | 32 | 7 | 04-1 | 45 | DSF-18-0006 |
| 0.45 | 3.7 | 1900 | 0.6 | 18 | 15-1 | 40 | DSF-28-0001 |
| 0.63 | 1.8 | 900 | 1 | 18 | 15-1 | 40 | DSF-28-0002 |
| 1 | 0.75 | 360 | 1.8 | 18 | 15-1 | 40 | DSF-28-0003 |
| 1.4 | 0.38 | 160 | - | 18 | 15-1 | 40 | DSF-28-0004 |
| 1.8 | 0.23 | 125 | 3.5 | 18 | 15-1 | 40 | DSF-28-0005 |
| 3.15 | 0.075 | 45 | 7 | 18 | 15-1 | 40 | DSF-28-0006 |
| 4.5 | 0.037 | 20 | 10 | 18 | 15-1 | 40 | DSF-28-0007 |
| 6.3 | 0.018 | 10 | 18 | 18 | 15-1 | 40 | DSF-28-0008 |