

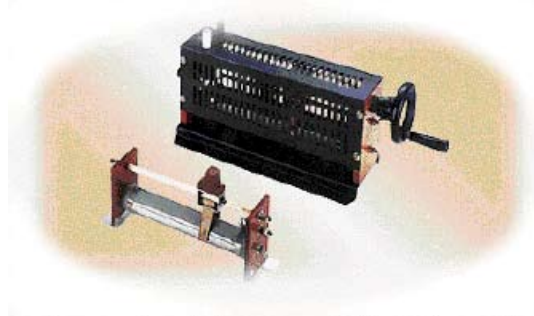


Power Resistors

BSR, BSQ Series - Variable Power Resistors / 摺动式线绕功率电阻器

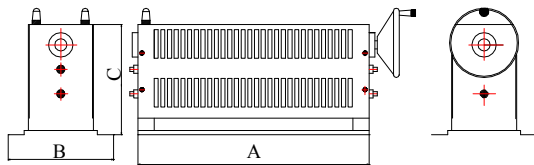
BSR, BSQ Series

A tubular ceramic form has copper-alloy or chromium-alloy windings as a resistance element, with the mount attachment method the same as the other described. Except for the sliding contact surface on the windings, the entire component is coated with a high-temperature non-flammable resin. The adjustment mechanism is a rotating point that slides directly on the resistance element, which allows variation of the resistance value (See the specifications of the DR series and VR series for exact features). Suitable for education, testing, load simulations, automation control installations, etc. For custom specifications, please contact us to discuss the details.



▶ Variable Power Resistor BSR Type 200W - 1300W

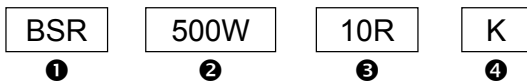
Variable Slide-type



Wattage Rating	Dimensions(mm)						Resistance Range(Ω)
	Case	A	B	C	Ceramic Rod	Bakelite	
200W	A	285	130	135	28×250	120×70×10	0.5-2K Ω
400W	B	360	150	185	40×325	170×90×10	0.5-4K Ω
500W	B	360	150	185	40×325	170×90×10	0.5-5K Ω
1000W	C	570	160	200	60×535	185×100×10	0.5-10K Ω
1300W	D	680	160	200	65×645	185×100×10	0.5-13K Ω

Notice: All dimensions might be changed or modified, please refer to last updating specification.

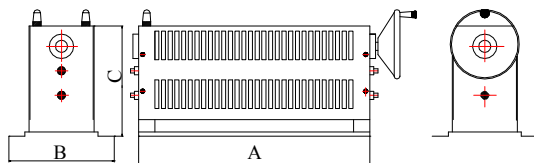
▶ How to Order



- ❶ Product Type: BSR type
- ❷ Rated Wattage: 200W~1300W
- ❸ Resistance Value(Ω):(Ω) Indicates Resistance Value in Units of Ohms.
- ❹ Resistance Tolerance:K($\pm 10\%$)

▶ Variable Power Resistor BSQ Type 300W - 2000W

Variable Slide-type Wave



Wattage Rating	Dimensions(mm)						Resistance Range(Ω)
	Case	A	B	C	Ceramic Rod	Bakelite	
300W	A	285	130	135	28×250	120×70×10	0.5-30 Ω
600W	B	360	150	185	40×325	170×90×10	0.5-60 Ω
750W	B	360	150	185	40×325	170×90×10	0.5-75 Ω
1500W	C	570	160	200	60×535	185×100×10	0.5-150 Ω
2000W	D	680	160	200	65×645	185×100×10	0.5-200 Ω

Notice: All dimensions might be changed or modified, please refer to last updating specification.

▶ How to Order



- ❶ Product Type: BSQ type
- ❷ Rated Wattage: 300W~2000W
- ❸ Resistance Value(Ω):(Ω) Indicates Resistance Value in Units of Ohms.
- ❹ Resistance Tolerance:K($\pm 10\%$)

