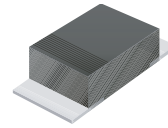


# SMD General Purpose Rectifier

CGRM4001-G Thru CGRM4007-G (RoHS Device)

**Glass Passivated Type**  
**Reverse Voltage: 50~1000 Volts**  
**Forward Current: 1.0 Amp**

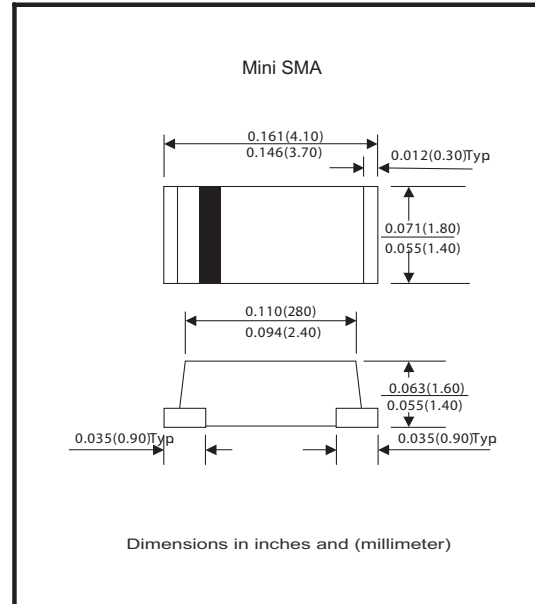


## Features:

- Ideal for surface mount applications
- Easy pick and place
- Plastic package has Underwriters Lab. Flammability classification 94V-0
- Exceeds environmental standard MIL-S-19500/228
- Low leakage current

## Mechanical Data:

- Case: Mini SMA/SOD-123 molded plastic
- Terminals: solderable per MIL-STD-750, method 2026
- Polarity: Color band denotes cathode end
- Mounting position: Any
- Approx. Weight: 0.04 gram



## Maximum Ratings and Electrical Characteristics

Parameter	Symbol	CGRM 4001-G	CGRM 4002-G	CGRM 4003-G	CGRM 4004-G	CGRM 4005-G	CGRM 4006-G	CGRM 4007-G	Unit
Max. Repetitive Peak Reverse Voltage	$V_{RRM}$	50	100	200	400	600	800	1000	V
Max. DC Blocking Voltage	$V_{DC}$	50	100	200	400	600	800	1000	V
Max. RMS Voltage	$V_{RMS}$	35	70	140	280	420	560	700	V
Peak Surge Forward Current 8.3ms single half-sine-wave superimposed on rated load (JEDEC method)	$I_{FSM}$	30							A
Max. Average Forward Current	$I_o$	1.0							A
Max. Instantaneous Forward Current at 1.0 A	$V_F$	1.1							V
Max. DC Reverse Current at Rated DC Blocking Voltage $T_a=25^{\circ}C$ $T_a=100^{\circ}C$	$I_R$	5 50							$\mu A$
Max. Thermal Resistance (Note 1)	$R_{\theta JA}$	60							$^{\circ}C/W$
Operating Junction Temperature	$T_j$	-55 to +150							$^{\circ}C$
Storage Temperature	$T_{STG}$	-55 to +150							$^{\circ}C$

Note 1: Thermal resistance from junction to ambient.

"-G" suffix designates RoHS compliant version.



## Rating and Characteristic Curves (CGRM4001-G Thru CGRM4007-G)

Fig. 1 - Reverse Characteristics

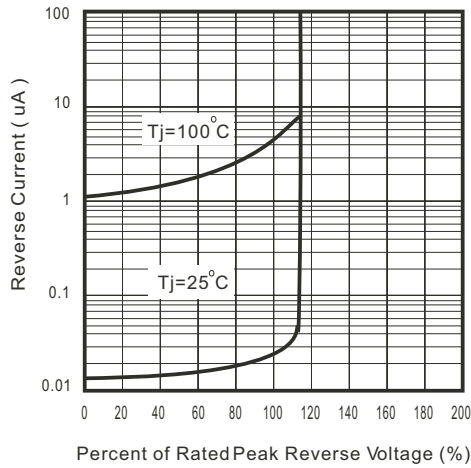


Fig.2 - Forward Characteristics

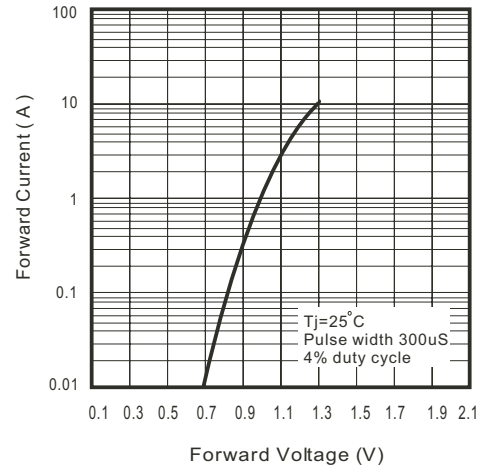


Fig. 3 - Junction Capacitance

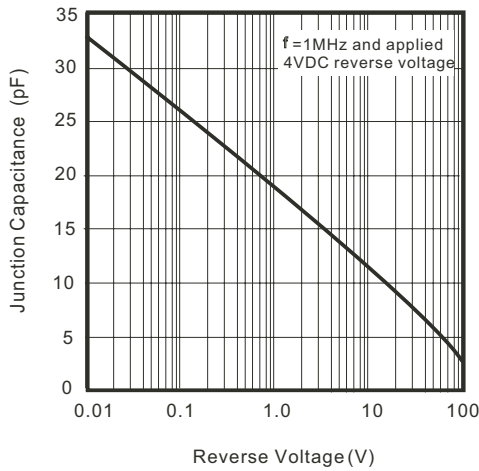


Fig. 4 - Current Derating Curve

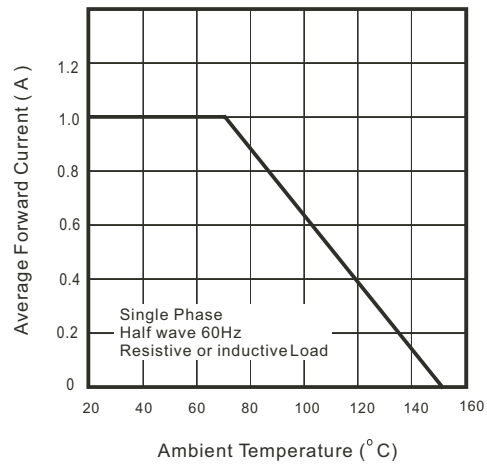
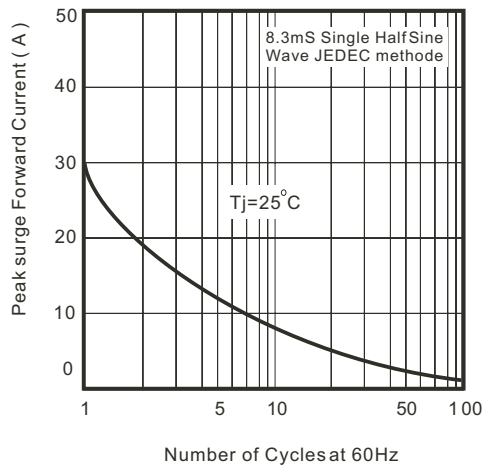


Fig. 5 - Non Repetitive Forward Surge Current



“-G” suffix designates RoHS compliant version.