



# SAW Components

Data Sheet B3678





**SAW Components**

**B3678**

**Low-Loss Filter**

**246,0 MHz**

**Data Sheet**

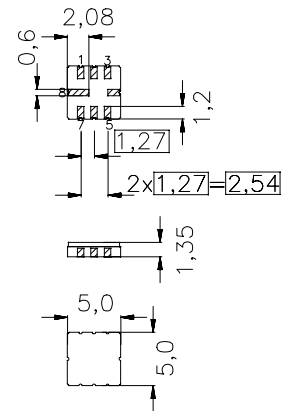
Ceramic package **QCC8C**

**Features**

- Low-loss IF filter
- Low insertion attenuation
- Low amplitude ripple
- Usable passband 1 MHz
- No matching network required for operation at 200  $\Omega$  (input) and 50  $\Omega$  (output)
- Balanced input, unbalanced output
- Ceramic package for **Surface Mounted Technology (SMT)**

**Terminals**

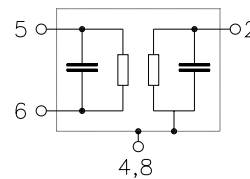
- Ni, gold-plated



Dimensions in mm, approx. weight 0,1 g

**Pin configuration**

- |      |                                |
|------|--------------------------------|
| 5, 6 | Balanced Input (200 $\Omega$ ) |
| 2    | Output (50 $\Omega$ )          |
| 1    | To be grounded                 |
| 4, 8 | Case ground                    |
| 3, 7 | Not connected                  |



Type	Ordering code	Marking and Package according to	Packing according to
B3678	B39251-B3678-U310	C61157-A7-A56	F61074-V8070-Z000

Electrostatic Sensitive Device (ESD)

**Maximum ratings**

Operable temperature range	$T$	- 25 / + 85	$^{\circ}\text{C}$	
Storage temperature range	$T_{\text{stg}}$	- 40 / + 85	$^{\circ}\text{C}$	
DC voltage	$V_{\text{DC}}$	0	V	
Source power	$P_s$	0	dBm	



SAW Components

B3678

Low-Loss Filter

246,0 MHz

Data Sheet

Characteristics

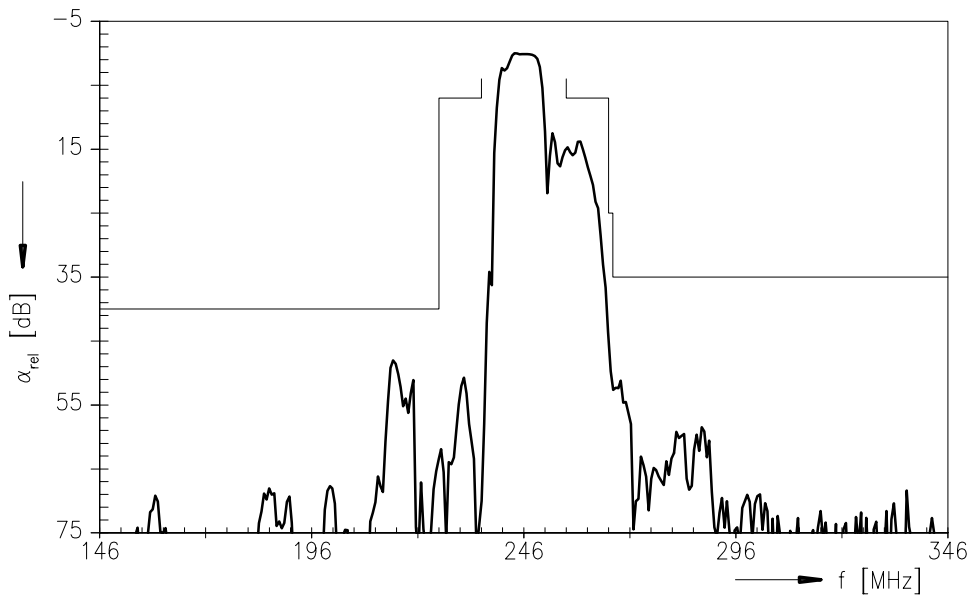
Operating temperature range:  $T = -25$  to  $+85^{\circ}\text{C}$   
 Terminating source impedance:  $Z_S = 200\ \Omega$   
 Terminating load impedance:  $Z_L = 50\ \Omega$

		min.	typ.	max.	
<b>Nominal frequency</b>	$f_N$	—	246,00	—	MHz
<b>Maximum insertion attenuation</b>	$\alpha_{\max}$				
245,5 ... 246,5 MHz		—	1,9	2,5	dB
<b>Amplitude ripple</b>	$\Delta\alpha$				
245,5 ... 246,5 MHz		—	0,2	0,4	dB
in any 200 kHz span: 245,5 ... 246,5 MHz		—	0,1	0,2	dB
<b>Group delay ripple (p-p)</b>	$\Delta\tau$				
245,8 ... 246,2 MHz		—	10,0	40,0	ns
245,5 ... 246,5 MHz		—	15,0	50,0	ns
<b>Attenuation</b>	$\alpha_{\text{rel}}$				
100,0 ... 226,0 MHz		40	50	—	dB
226,0 ... 236,0 MHz		7	50	—	dB
256,0 ... 266,0 MHz		7	15	—	dB
266,0 ... 268,0 MHz		25	40	—	dB
268,0 ... 500,0 MHz		35	50	—	dB

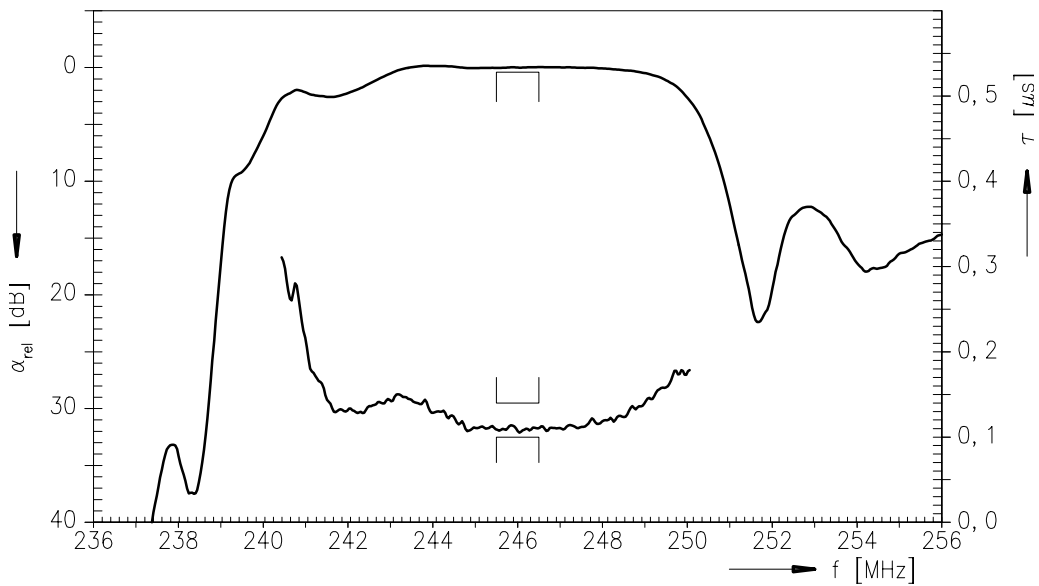


Data Sheet

Transfer function (reduced three port measurement)



Transfer function (reduced three port measurement)





**SAW Components**

**B3678**

**Low-Loss Filter**

**246,0 MHz**

Data Sheet

**Published by EPCOS AG**  
**Surface Acoustic Wave Components Division, OFW E NK**  
**P.O. Box 80 17 09, D-81617 München**

© EPCOS AG 1999. All Rights Reserved.

As far as patents or other rights of third parties are concerned, liability is only assumed for components per se, not for applications, processes and circuits implemented within components or assemblies.

The information describes the type of component and shall not be considered as assured characteristics.

Terms of delivery and rights to change design reserved.

For questions on technology, prices and delivery please contact the sales offices of EPCOS AG or the international representatives.

Due to technical requirements components may contain dangerous substances. For information on the type in question please also contact one of our sales offices.