





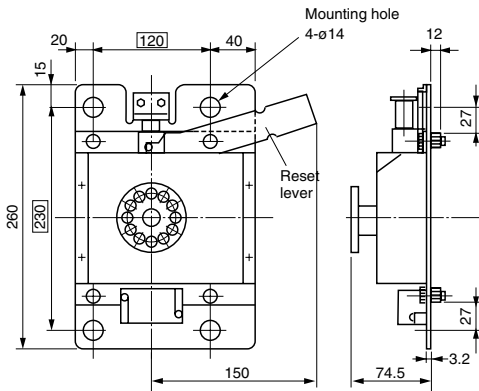
# H.V. Distribution Equipment

## Air load break switches

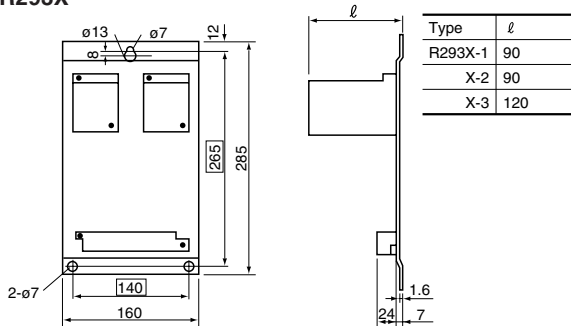
### Accessories/LB type

#### ■ Dimensions, mm/Gang-operated mechanism

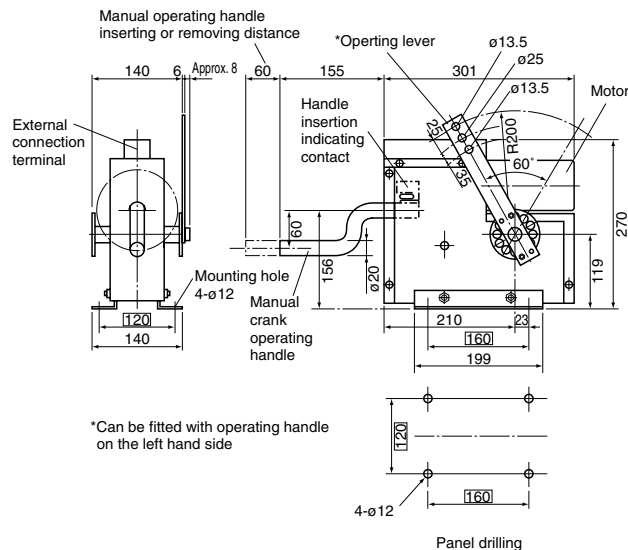
- R290-B



- R293X

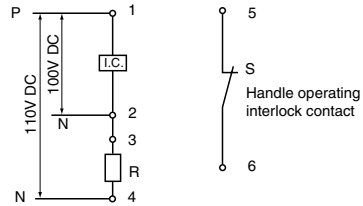


- R293B

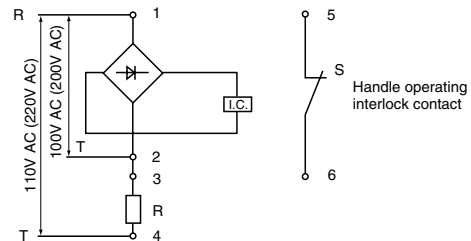


#### ■ Wiring diagrams

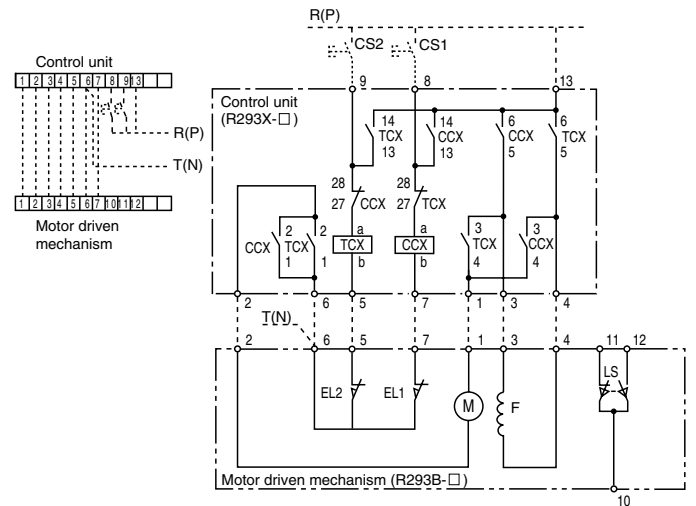
- R290-BDS



- R290-BAS, R290Z-BAS



- R293B, R293X



- CS1 : ON switch (Not supplied)
- CS2 : OFF switch (Trip) (Not supplied)
- CCX : Magnetic contactor for closing
- TCX : Magnetic contactor for tripping
- EL1 : End limit switch for closing
- EL2 : End limit switch for tripping
- F : Motor/field
- M : Motor/armature
- LS : Crank handle insertion indicating contact
- 10-11 ON: Removing handle
- 10-12 ON: Inserting handle

Note: For gang-operated diagrams, contact FUJI.

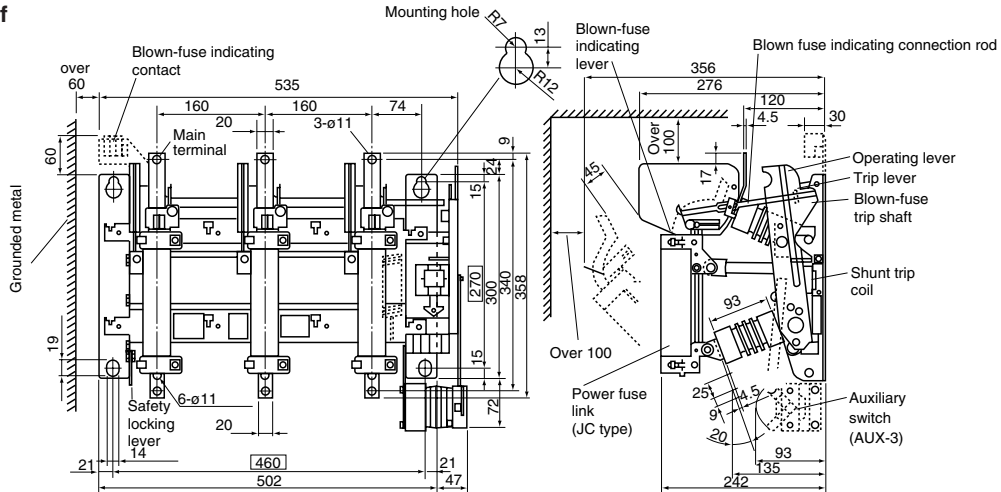
# H.V. Distribution Equipment

## Air load break switches

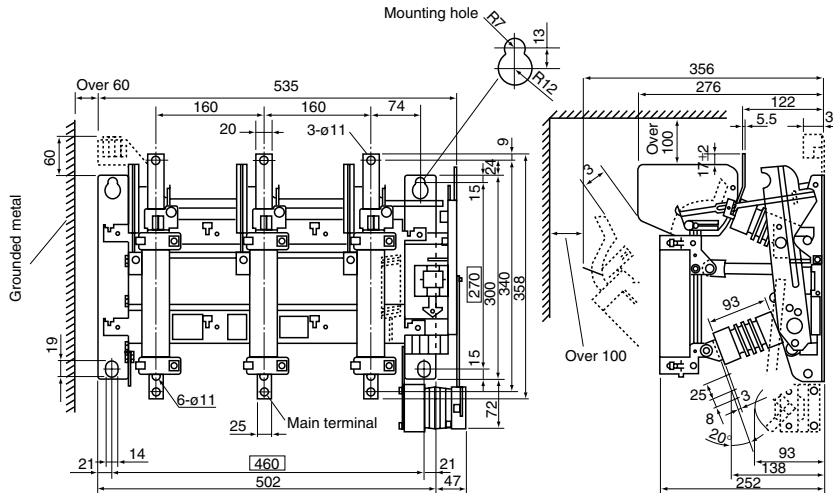
### LBS type

#### ■ Dimensions, mm

- LBS-6/200, 200f

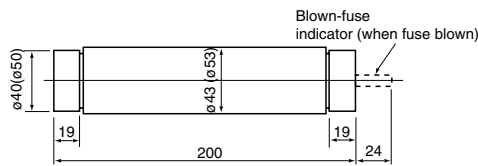


- LBS-6/210, 210f

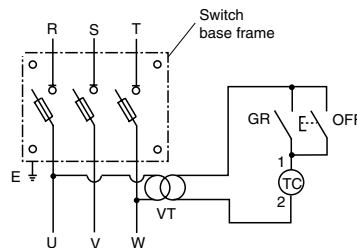


- Accessories
- Fuse link

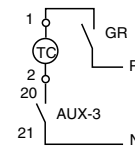
#### ■ Wiring diagrams (Shunt trip operating circuit)



( ) : JC-6/100



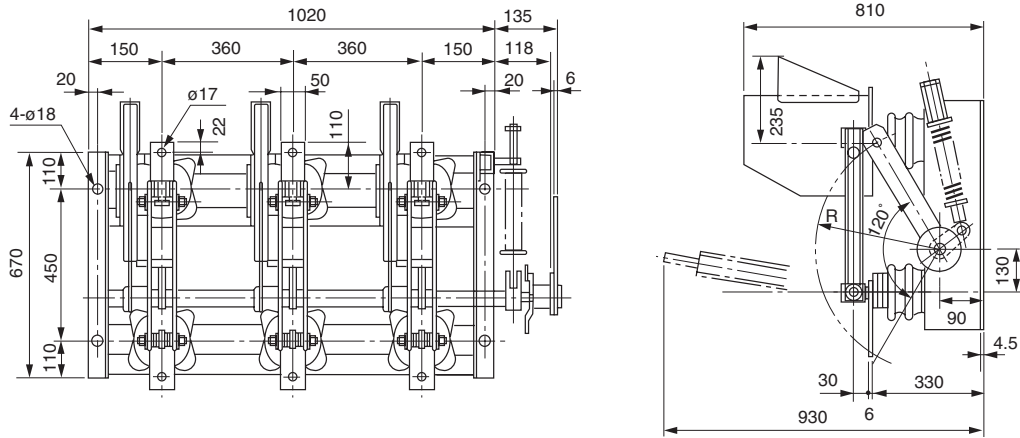
AC operating



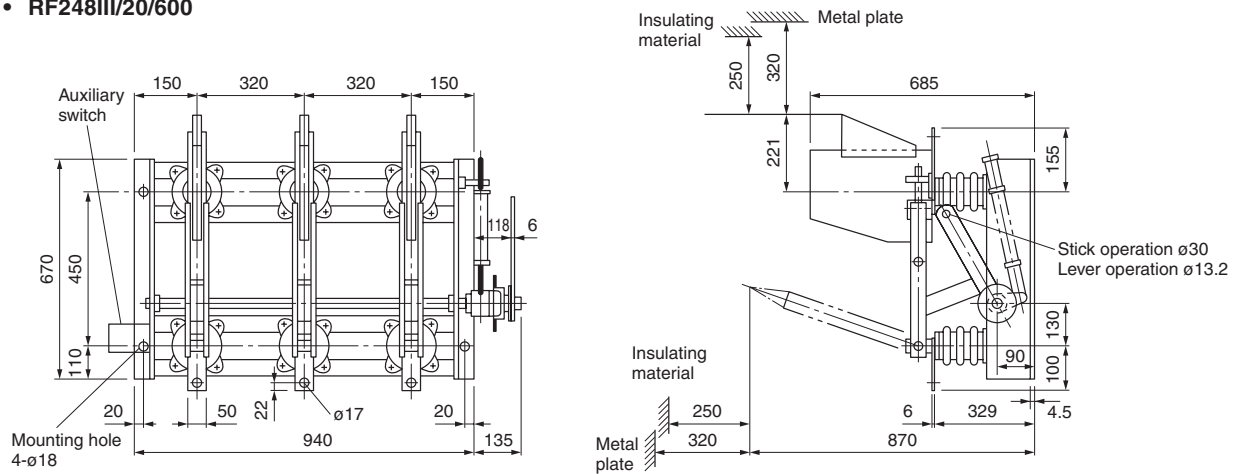
DC operating

TC : Trip coil  
GR : Ground relay  
E : Grounding

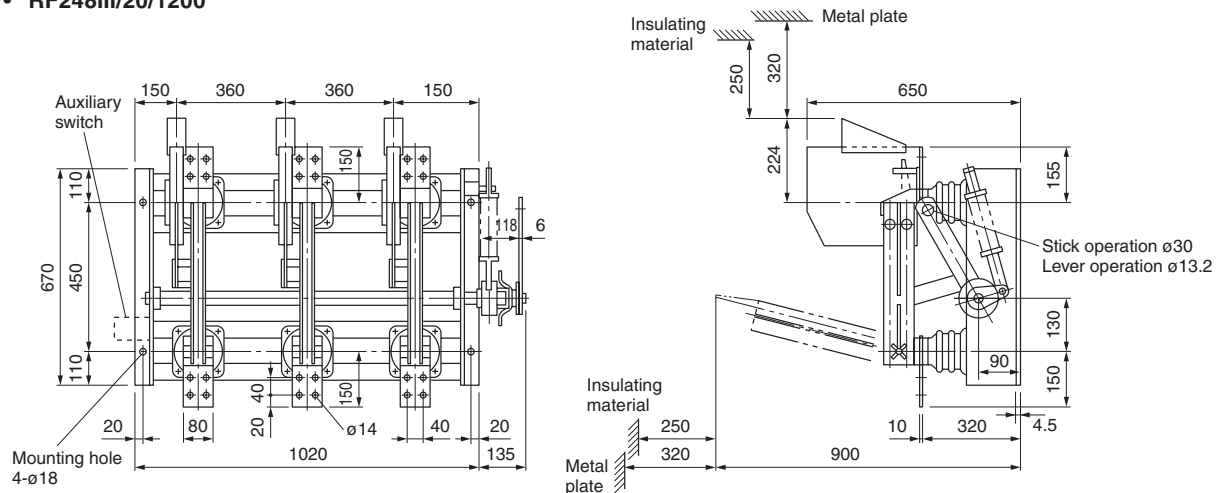
■ Dimensions, mm  
 • RF250III/20/600



• RF248III/20/600



• RF248III/20/1200



# H.V. Distribution Equipment

## Air load break switches

### RF type

■ Dimensions, mm  
 • RF248III/30/600

