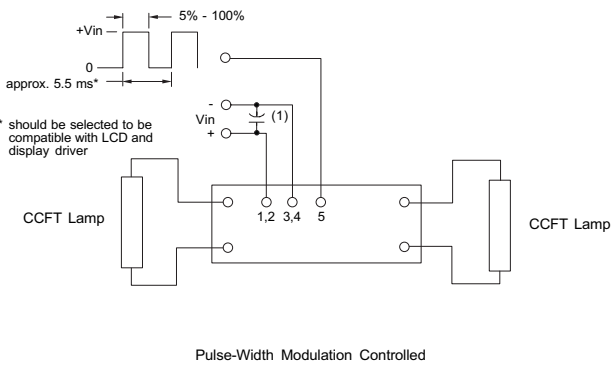


K2417

**Dimming Option**  
(valid when the "C" jumper is removed)



\* should be selected to be compatible with LCD and display driver

\* Note 1 - Input by-pass capacitor (25uf - 100uf) may be required to reduce reflected ripple.



**Endicott Research Group, Inc.**  
2601 Wayne St., Endicott NY 13760  
607-754-9187

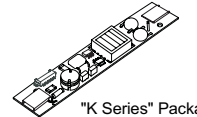
page 4.



**Endicott Research Group, Inc.**  
2601 Wayne St., Endicott NY 13760  
607-754-9187 Fax 607-754-9255  
<http://www.ergpower.com>

K2417

*8m Class*  
2 Tube DC to AC Inverter



"K Series" Package

**Specifications and Applications Information**

01/31/01

Preliminary

The ERG K2417 (*8m Class*) low profile dc to ac inverter is specifically designed to power the Hitachi SX25S003 LCD display module to a moderate brightness level from a +12 volt dc source.

This low profile inverter features:

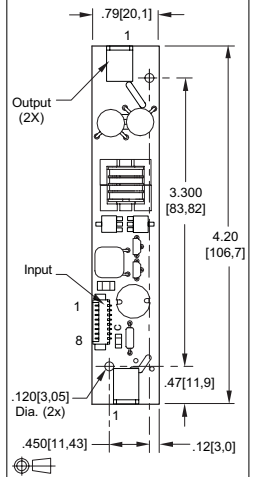
- ✓ Less Than 8 mm in Height
- ✓ LCD Module Specific
- ✓ Display Compatible Output Connector
- ✓ Firm Specifications
- ✓ Application Information
- ✓ Designed, Manufactured and Supported in the USA
- ✓ Custom Input and Output Voltages
- ✓ Flexible System Interface
- ✓ Notebook Display Head Compatible

**Pin Descriptions**

Input Connector		Output Connectors	
Molex 532-61-0890		JST SM02B-BHSS-1-TB	
J1-1 Vin(+)	J1-2 Vin(+)	J2-1 ACout	J3-1 ACout
J1-3 GND	J1-4 GND	J2-2 ACout	J3-2 ACout
J1-5 Control *	J1-6 NC		
J1-7 NC	J1-8 NC		

\* Valid with "C" Jumper Removed

**Package Configuration**



# K2417

## Absolute Maximum Ratings

Rating	Symbol	Value	Units
Input Voltage Range	V <sub>in</sub>	-0.3 to +13.2	Vdc
Operating Temperature	T <sub>o</sub>	-0 to +70	°C
Storage Temperature	T <sub>stg</sub>	-40 to +85	°C

## Recommended Operating Conditions

Rating	Symbol	Value	Units
Input Voltage	V <sub>in</sub>	+6 to 13.2	Vdc

## Electrical Characteristics

Unless otherwise noted V<sub>in</sub> = 12.00 Volts dc and T<sub>a</sub> = 25 °C

Characteristic	Symbol	Min	Typ	Max	Units
Input Current	I <sub>in</sub>	-	.51	.59	Adc
Operating Frequency	F <sub>o</sub>	35	40	45	KHz
Minimum Output Voltage	V <sub>out</sub> (min)	1500	-	-	Vrms
Efficiency	η	-	82	-	%
Output Current (per tube)	I <sub>out</sub>	-	5.0	-	marms
Output Voltage (per tube) (When powering a load simulating the referenced display)	V <sub>out</sub>	-	500	-	Vrms
Pin3 Input Current Requirement	-	-	7	-	madc

After tube has been allowed to warm-up for 5 minutes. Specifications subject to change without notice. External Disable Circuit shown on page 3.



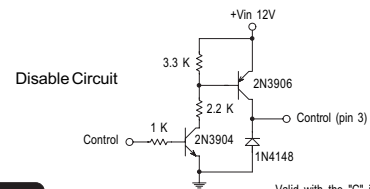
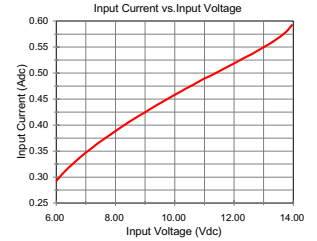
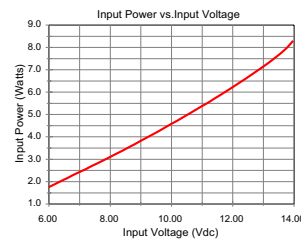
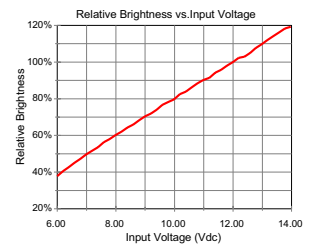
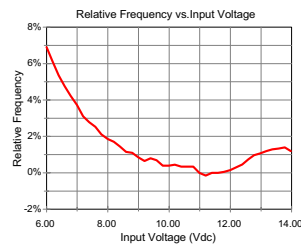
Endicott Research Group, Inc.

Made in USA

page 2.

## Typical Performance Curves

# K2417



Valid with the "C" jumper removed



Endicott Research Group, Inc.

page 3.