

PB4527 Series

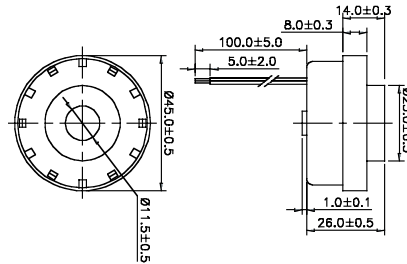
Specifications:

Parameters	Units	PB4527A12CAW
▶ Min Sound Pressure Level at 30cm	dBA	105
Rated Voltage	Vdc	12
Operating Voltage	Vdc	1.5 - 15
Resonance Frequency	Hz	2900 ± 500
▶ Max Operating Current	mA	30
Tone	-	Continuous
Operating Temperature	°C	-20 - +70
Case Material	-	ABS
Weight	g	30



▶ Value applying rated voltage

Unit: mm • Tolerance: ±0.5mm



PB4558 Series

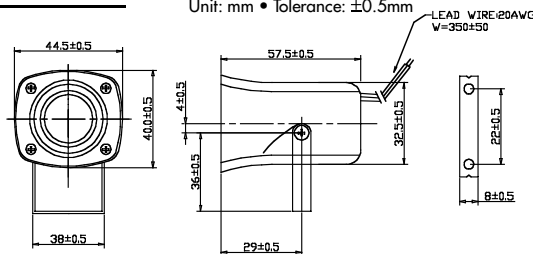
Specifications:

Parameters	Units	PB4558A12AW
▶ Min Sound Pressure Level at 1m	dBA	105
Rated Voltage	Vdc	12
Operating Voltage	Vdc	5 - 15
Resonance Frequency	Hz	1500 - 4000
▶ Max Operating Current	mA	200
Tone	-	Siren
Operating Temperature	°C	-20 - +70
Case Material	-	ABS
Weight	g	49.8



▶ Value applying rated voltage

Unit: mm • Tolerance: ±0.5mm



PB5029 Series

Specifications:

Parameters	Units	PB5029A12NP
▶ Min Sound Pressure Level at 1m	dBA	100
Rated Voltage	Vdc	12
Operating Voltage	Vdc	3 - 24
Resonance Frequency	Hz	2500 ± 500
▶ Max Operating Current	mA	70
Tone	-	Continuous
Operating Temperature	°C	-40 - +85
Case Material	-	Noryl
Weight	g	27.3



▶ Value applying rated voltage

Unit: mm • Tolerance: ±0.5mm

