

PB4216 Series

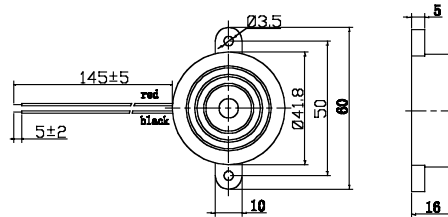
Specifications:

Parameters	Units	PB4216A12CNW	PB4216B12SNW	PB4216A12FNW
▶ Min Sound Pressure Level at 30cm	dBA	96	90	90
Rated Voltage	Vdc	12	12	12
Operating Voltage	Vdc	3 - 20	3 - 28	3 - 28
Resonance Frequency	Hz	2800 ± 500	2900 ± 500	2900 ± 500
▶ Max Operating Current	mA	10	9	9
Tone	-	Continuous	Slow Pulse	Fast Pulse
Operating Temperature	°C	-30 - +85	-20 - +60	-30 - +60
Case Material	-	Noryl	Noryl	Noryl
Weight	g	15	15	15



▶ Value applying rated voltage

Unit: mm • Tolerance: ±0.5mm



PB4218 Series

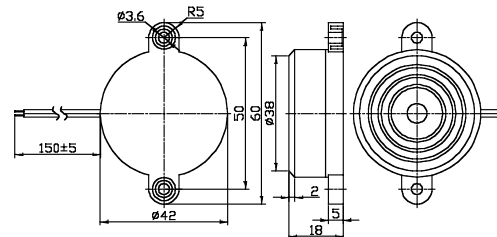
Specifications:

Parameters	Units	PB4218A09SAW	PB4218A110CAW	PB4218A220CAW
▶ Min Sound Pressure Level at 30cm	dBA	100	95	98
Rated Voltage	Vdc	9	110 Vac	220 Vac
Operating Voltage	Vdc	7 - 20	50 - 250 Vac	50 - 250 Vac
Resonance Frequency	Hz	2800 ± 500	2800 ± 500	2800 ± 500
▶ Max Operating Current	mA	200	10	10
Tone	-	Siren	Continuous	Continuous
Operating Temperature	°C	-20 - +70	-20 - +70	-20 - +70
Case Material	-	ABS	ABS	ABS
Weight	g	17	17	17



▶ Value applying rated voltage

Unit: mm • Tolerance: ±0.5mm



PB4221 Series

Specifications:

Parameters	Units	PB4221A24AP
▶ Min Sound Pressure Level at 25cm	dBA	85
Rated Voltage	Vdc	24
Operating Voltage	Vdc	1 - 28
Resonance Frequency	Hz	2900 ± 500
▶ Max Operating Current	mA	15
Tone	-	Continuous
Operating Temperature	°C	-20 - +60
Case Material	-	ABS
Weight	g	5.0



▶ Value applying rated voltage

Unit: mm • Tolerance: ±0.5mm

