

PB3631 Series

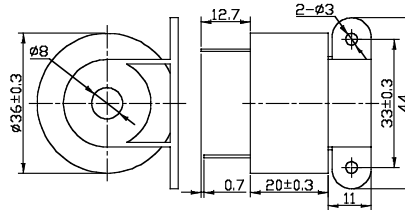
Specifications:

Parameters	Units	PB3631A48NP
▶ Min Sound Pressure Level at 30cm	dB(A)	80
Rated Voltage	Vdc	48
Operating Voltage	Vdc	9 - 48
Resonance Frequency	Hz	2800 ± 500
▶ Max Operating Current	mA	6
Tone	-	Continuous
Operating Temperature	°C	-40 - +85
Case Material	-	Noryl
Weight	g	35



Unit: mm • Tolerance: ±0.5mm

▶ Value applying rated voltage



PB3626 Series

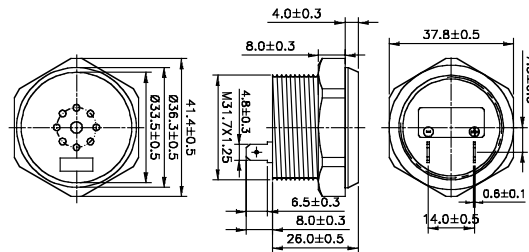
Specifications:

Parameters	Units	PB3626A12AP
▶ Min Sound Pressure Level at 1m	dB(A)	85
Rated Voltage	Vdc	12
Operating Voltage	Vdc	5 - 28
Resonance Frequency	Hz	3000 ± 500
▶ Max Operating Current	mA	18
Tone	-	Continuous
Operating Temperature	°C	-20 - +60
Case Material	-	ABS
Weight	g	30



Unit: mm • Tolerance: ±0.5mm

▶ Value applying rated voltage



PB4020 Series

Specifications:

Parameters	Units	PB4020A09NP
▶ Min Sound Pressure Level at 1m	dB(A)	100
Rated Voltage	Vdc	9
Operating Voltage	Vdc	3 - 20
Resonance Frequency	Hz	2800 ± 500
▶ Max Operating Current	mA	50
Tone	-	Continuous
Operating Temperature	°C	-20 - +70
Case Material	-	Noryl
Weight	g	12.7



Unit: mm • Tolerance: ±0.5mm

▶ Value applying rated voltage

