

## PB3015 Series

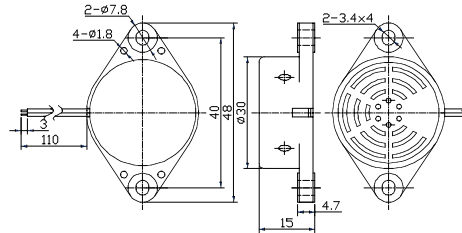
### Specifications:

Parameters	Units	PB3015A12AW
▶ Min Sound Pressure Level at 10cm	dBA	95
Rated Voltage	Vdc	12
Operating Voltage	Vdc	3 - 20
Resonance Frequency	Hz	3200 ± 500
▶ Max Operating Current	mA	10
Tone	-	Continuous
Operating Temperature	°C	-20 - +70
Case Material	-	ABS
Weight	g	6.6



▶ Value applying rated voltage

Unit: mm • Tolerance: ±0.5mm



## PB3020 Series

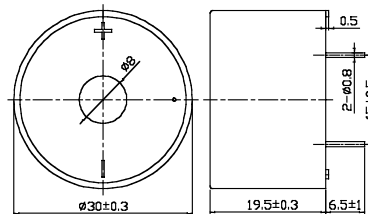
### Specifications:

Parameters	Units	PB3020A12NP
▶ Min Sound Pressure Level at 10cm	dBA	95
Rated Voltage	Vdc	12
Operating Voltage	Vdc	3 - 20
Resonance Frequency	Hz	3600 ± 500
▶ Max Operating Current	mA	10
Tone	-	Continuous
Operating Temperature	°C	-40 - +85
Case Material	-	Noryl
Weight	g	8.0



▶ Value applying rated voltage

Unit: mm • Tolerance: ±0.5mm



## PB3215 Series

### Specifications:

Parameters	Units	PB3215A12AW
▶ Min Sound Pressure Level at 10cm	dBA	95
Rated Voltage	Vdc	12
Operating Voltage	Vdc	3 - 20
Resonance Frequency	Hz	4000 ± 500
▶ Max Operating Current	mA	10
Tone	-	Continuous
Operating Temperature	°C	-20 - +70
Case Material	-	ABS
Weight	g	7.0



▶ Value applying rated voltage

Unit: mm • Tolerance: ±0.5mm

